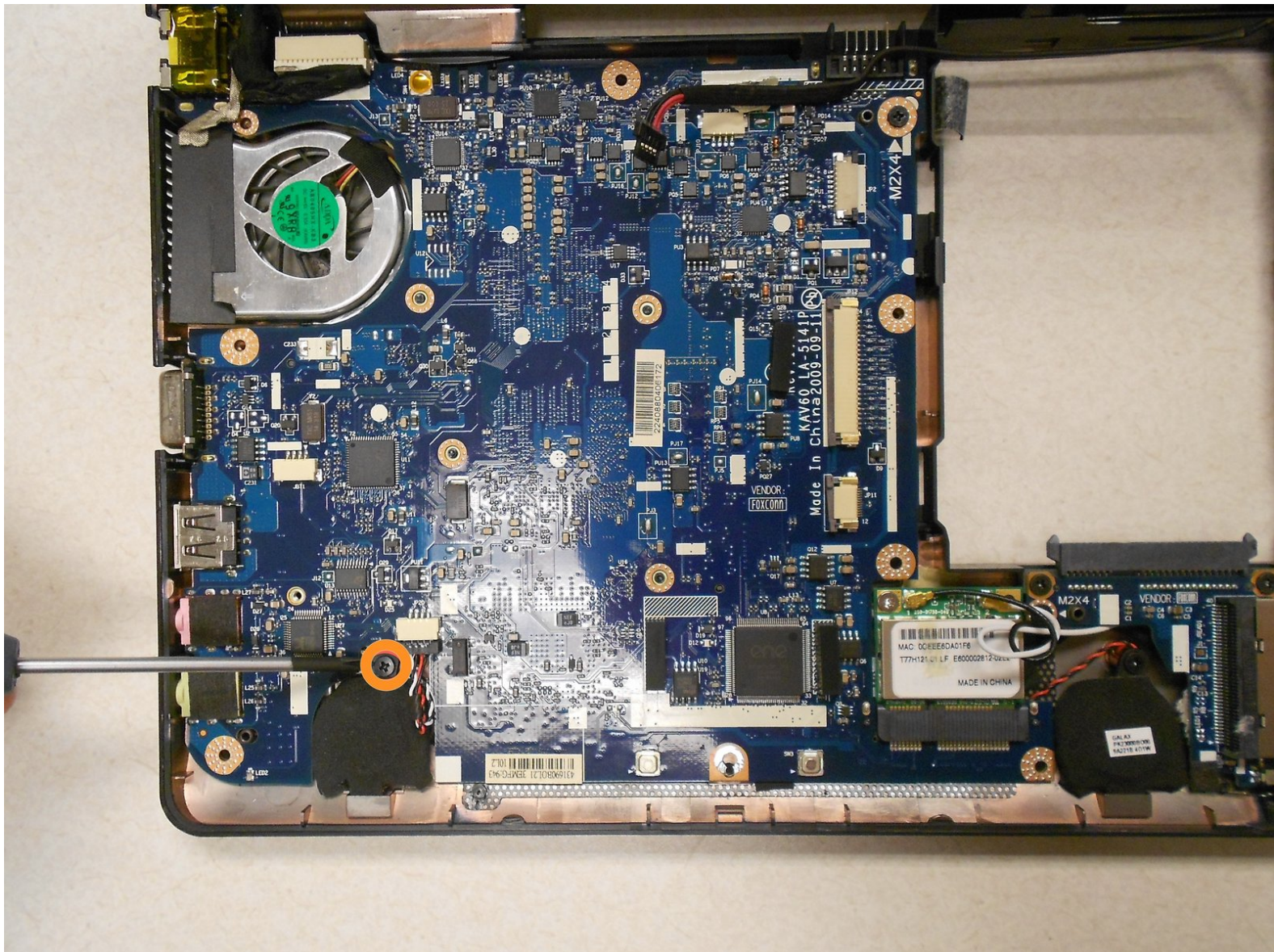




# Gateway KAV60 LT2016U Speaker Replacement

Gateway KAV60 LT2016U speaker replacement.

Written By: Lydia Benjock



---

# INTRODUCTION

Can't hear anything? Replace the speakers once you get into the upper cover.



## TOOLS:

- [Phillips #0 Screwdriver](#) (1)
  - [iFixit Opening Tools](#) (1)
-



## Step 1 — Battery



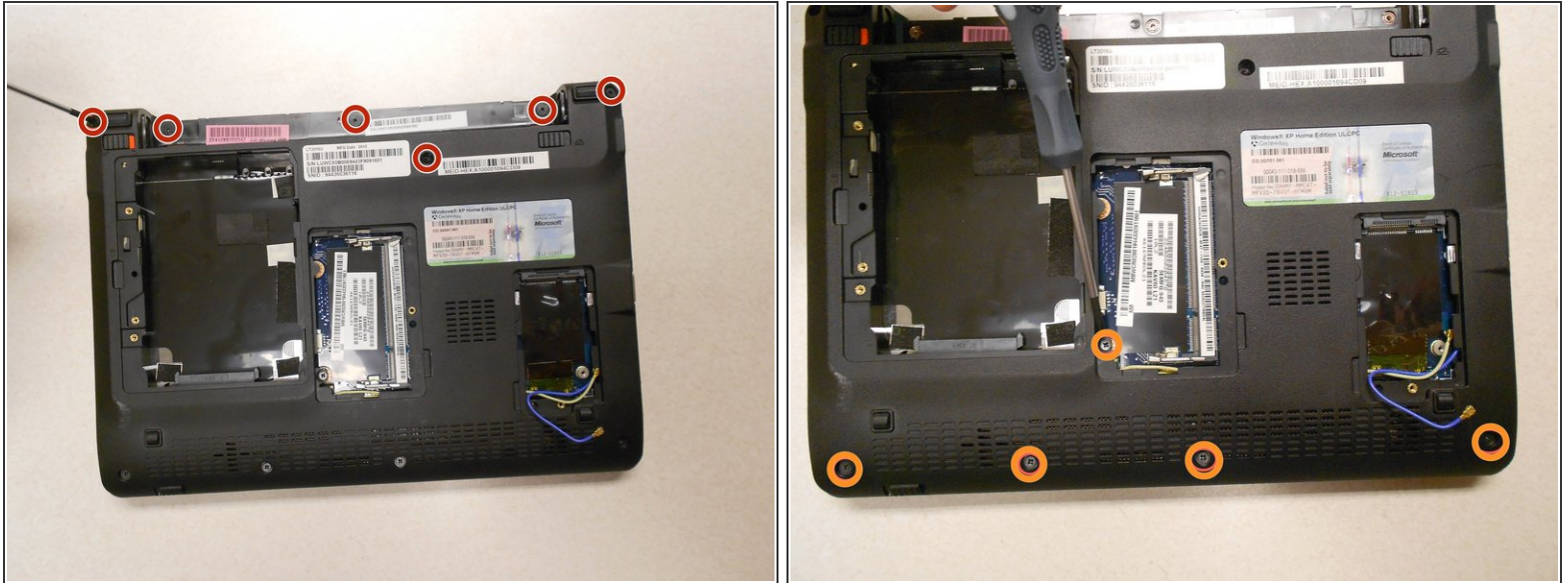
- Unlock the tab located in the top left corner of the netbook.
  - The red tab indicated that the battery has been properly unlocked.
  - Remove the battery.
- i** When working with electronics, it is always wise to remove the power source before taking the device apart.

## Step 2 — Upper Cover



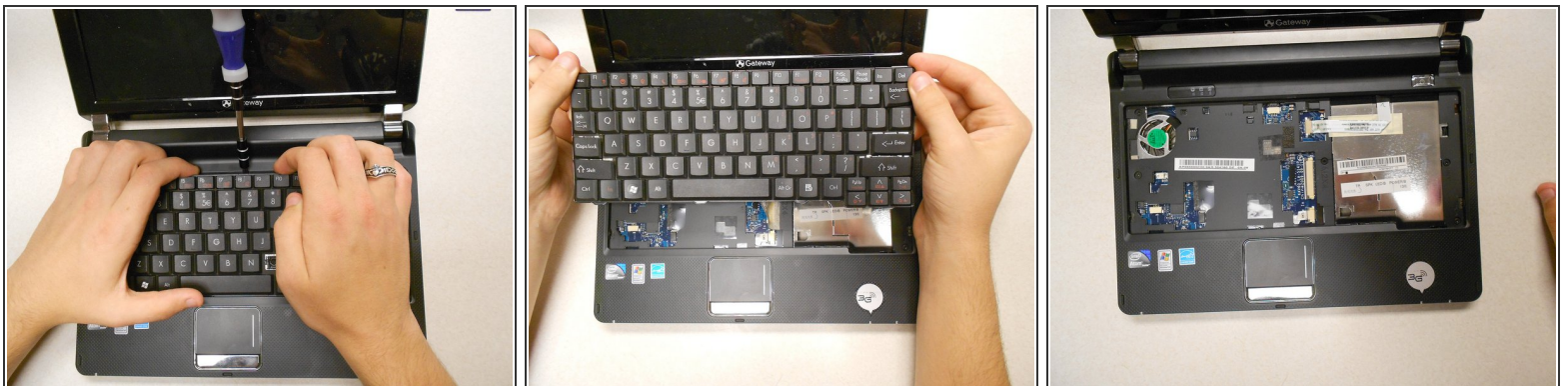
- !** Make sure the RAM, hard drive, and WiFi card have been removed from the computer before trying to take off the cover so they are not damaged in the process.

## Step 3



- Remove six (6) 5mm screws, two (2) 17.5mm screws, and three (3) 2.5mm screws from the back, using the Phillips #0 screwdriver, as marked here.

## Step 4



- Pry up the keyboard using a spudger or plastic opening tool in the exact location shown in the photograph.  
⚠ Don't use a screwdriver as a pry tool as shown in this example.
- Carefully disconnect the keyboard ribbon cable from the motherboard, and remove the keyboard.

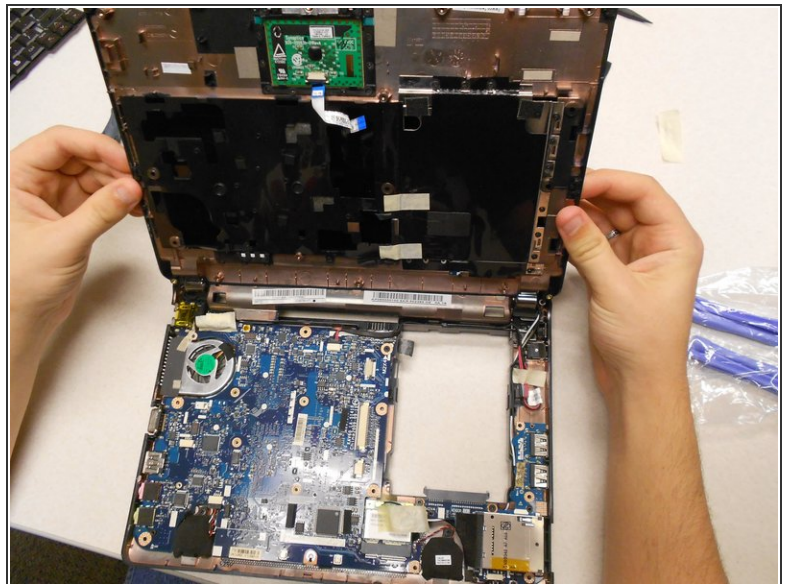
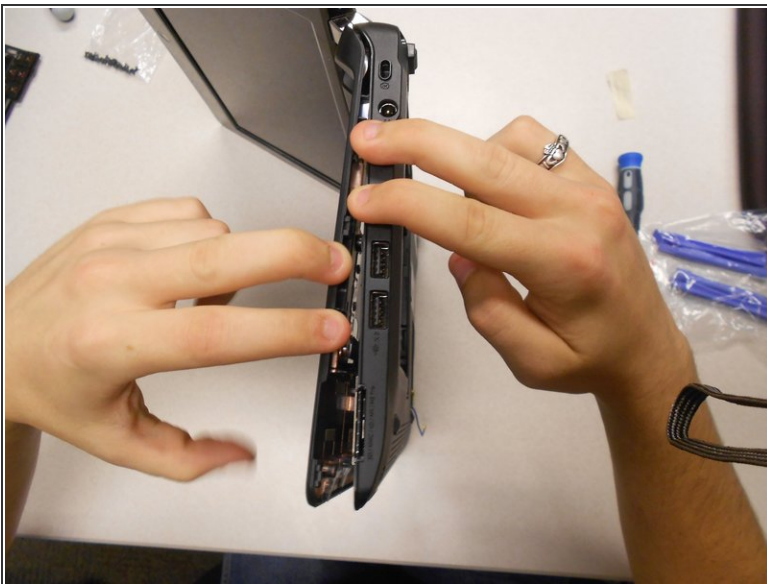


## Step 5



- Remove the five (5) 5mm screws shown here using the Phillips #0 screwdriver.

## Step 6

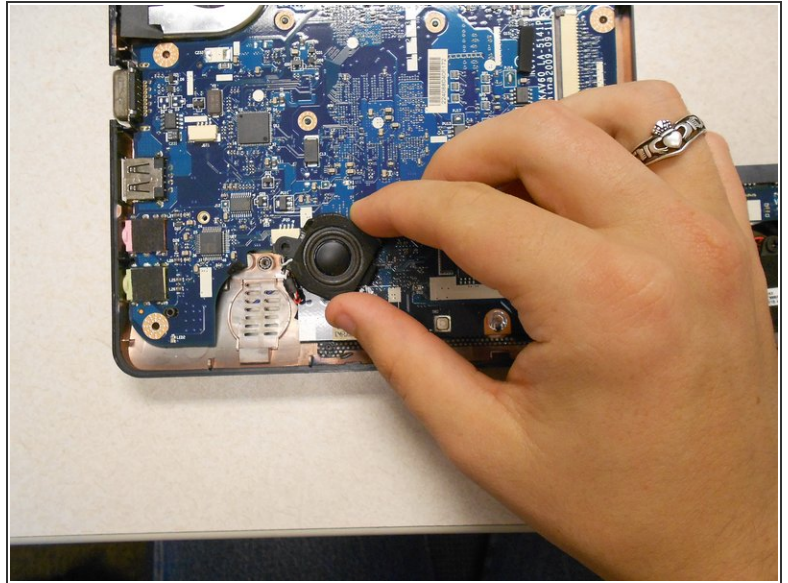
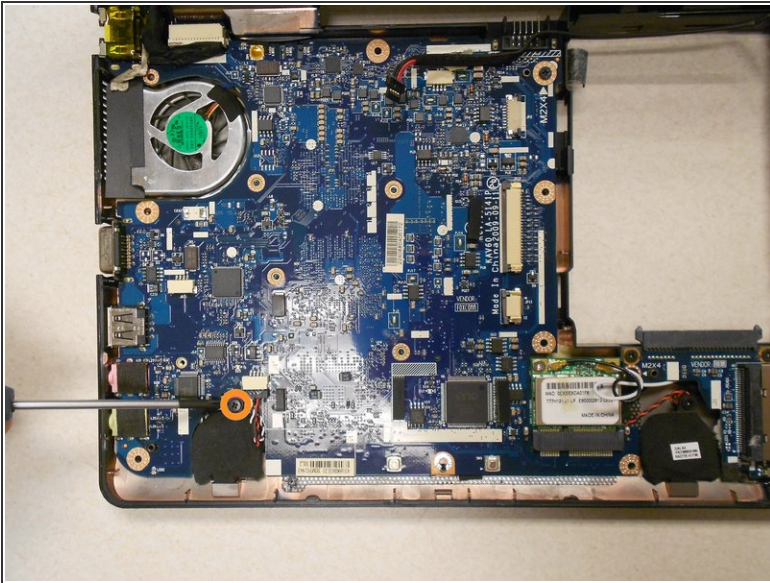


- Separate the upper cover from the back cover. It is possible to do this without a tool, but you may also use a plastic opening tool for added leverage.
- Be careful to keep even pressure all the way around the cover so that it is not bent beyond repair.
- Carefully disconnect two ribbon cables to complete the separation of the upper cover.

This document was generated on 2020-11-28 03:05:21 AM (MST).

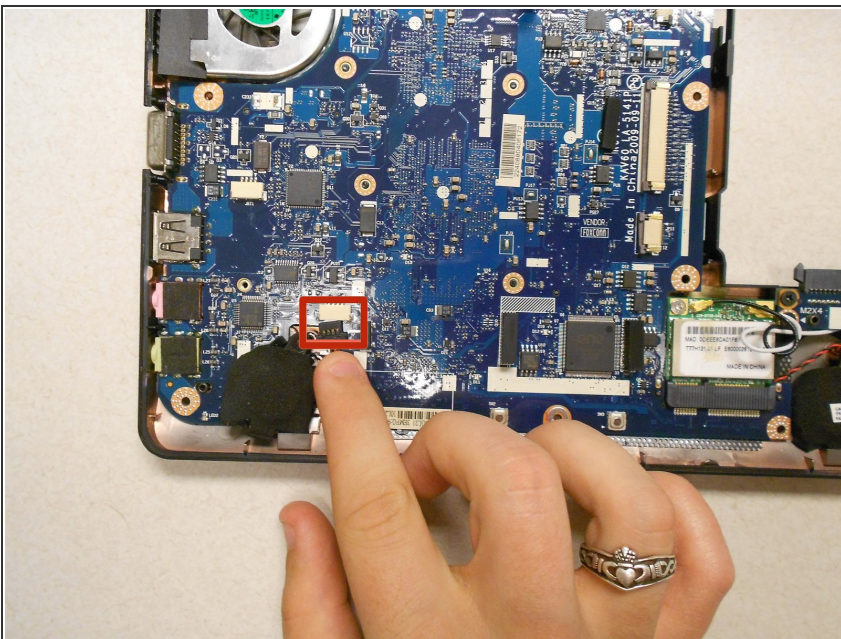


## Step 7 — Speaker



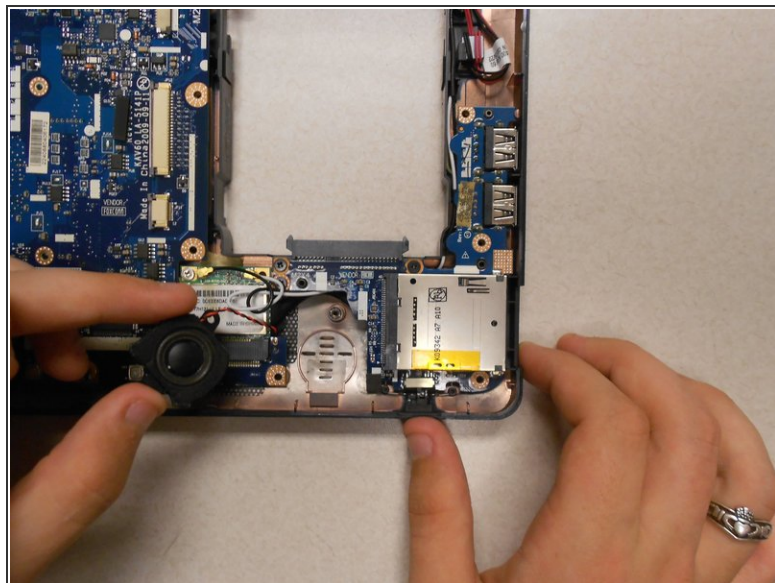
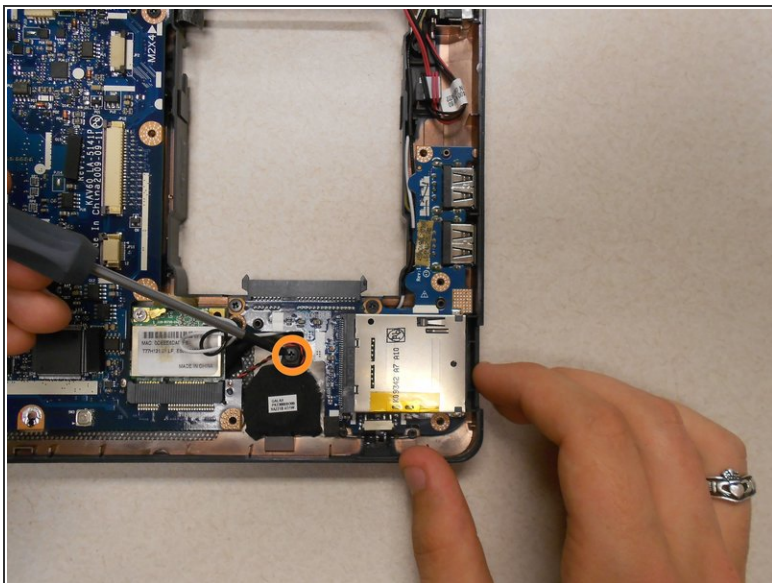
- Remove the 5mm screw of the left speaker cover using a Phillips #0 screwdriver, as shown here.

## Step 8



- Disconnect the speaker's connection to the motherboard by lightly pulling on the connector until it pops apart from the motherboard.

## Step 9



- Repeat the previous steps for the right speaker. Remove the 5mm screw of the right speaker cover using a Phillips #0 screwdriver.

To reassemble your device, follow these instructions in reverse order.