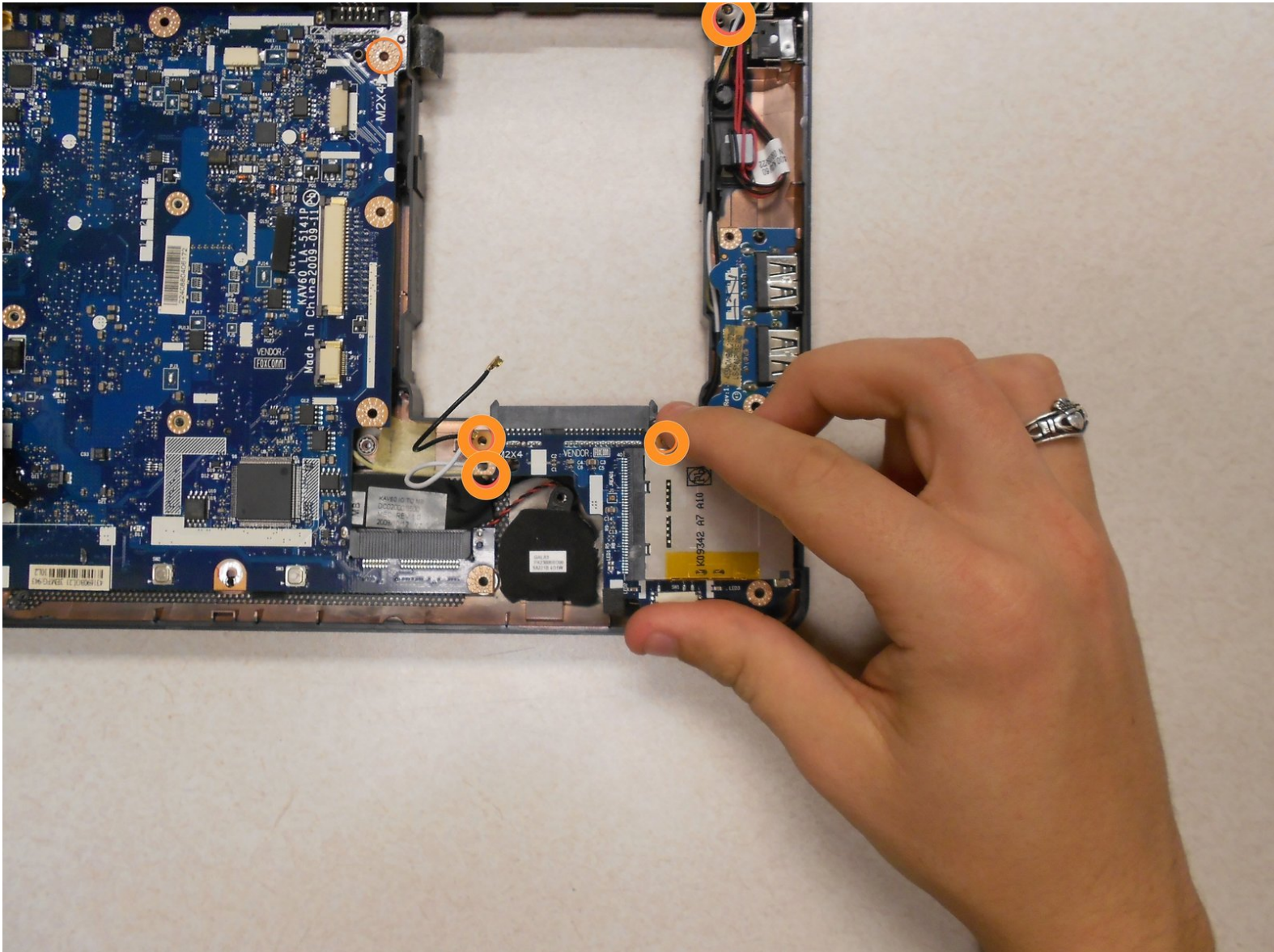




# Gateway KAV60 LT2016U Motherboard Replacement

Gateway KAV60 LT2016U motherboard replacement.

Written By: Lydia Benjock



---

# INTRODUCTION

Replacing the motherboard take quite a few steps, but it is doable.

---

## TOOLS:

- [Phillips #0 Screwdriver](#) (1)
  - [iFixit Opening Tools](#) (1)
-

## Step 1 — Battery



- Unlock the tab located in the top left corner of the netbook.
  - The red tab indicated that the battery has been properly unlocked.
  - Remove the battery.
- i** When working with electronics, it is always wise to remove the power source before taking the device apart.

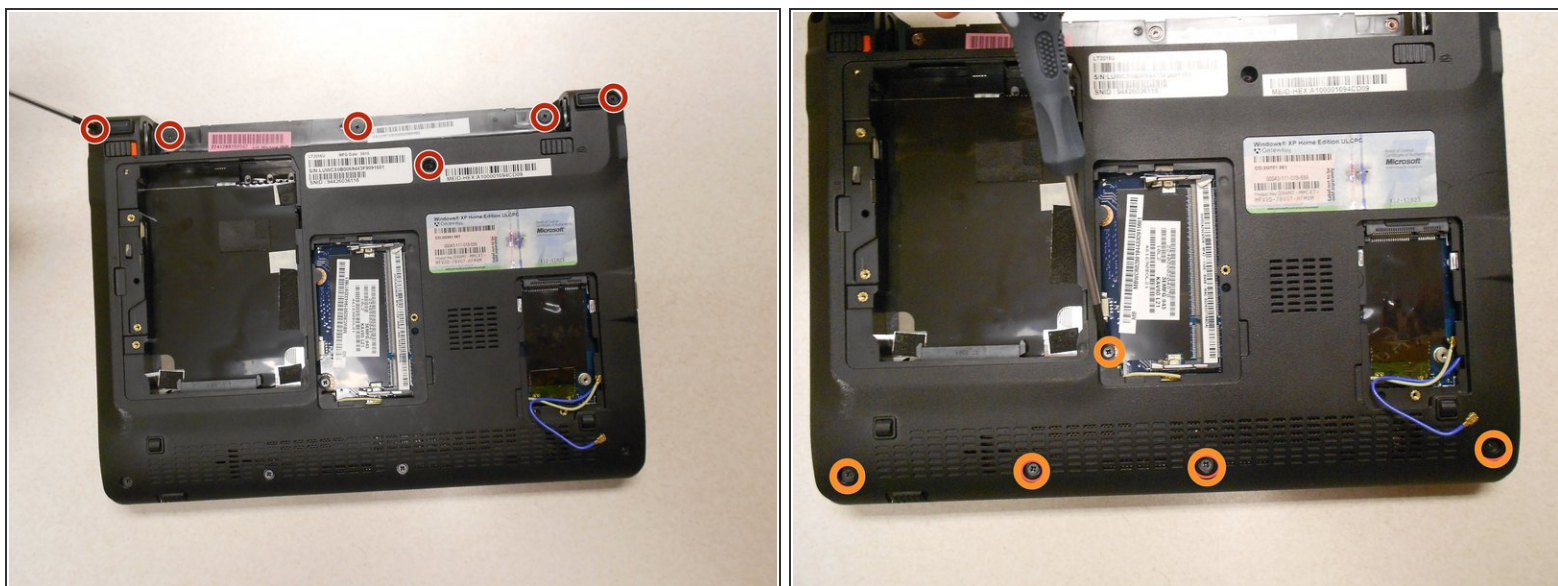
## Step 2 — Upper Cover



- !** Make sure the RAM, hard drive, and WiFi card have been removed from the computer before trying to take off the cover so they are not damaged in the process.

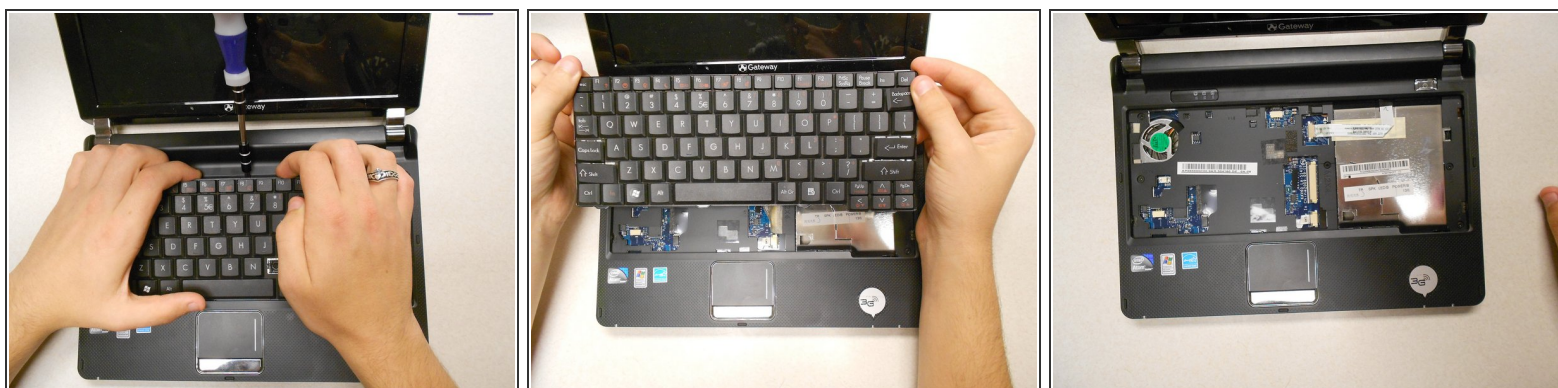



## Step 3



- Remove six (6) 5mm screws, two (2) 17.5mm screws, and three (3) 2.5mm screws from the back, using the Phillips #0 screwdriver, as marked here.

## Step 4



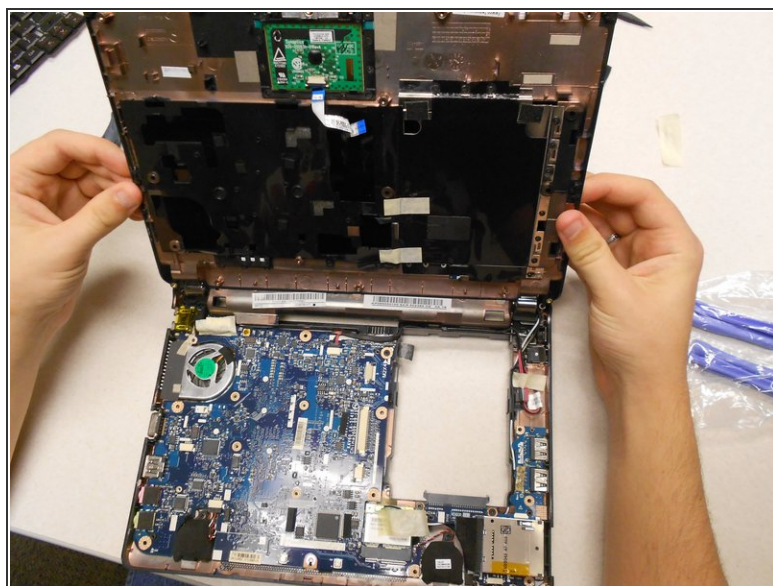
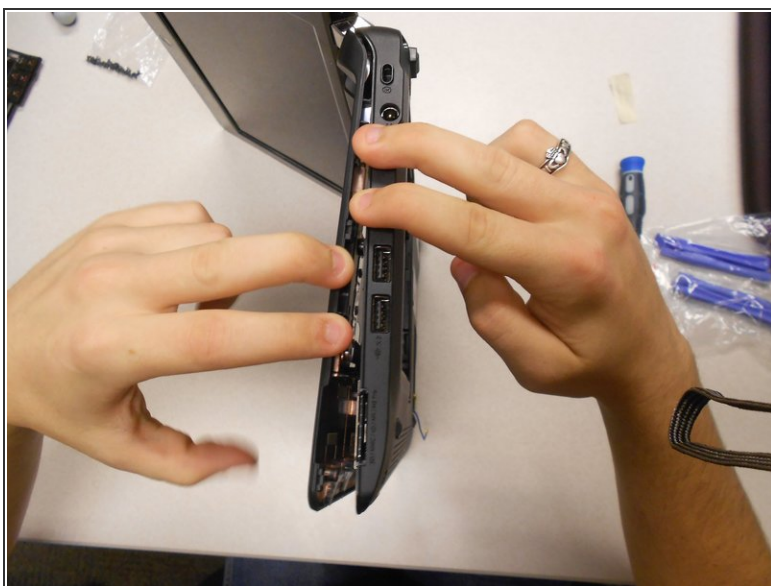
- Pry up the keyboard using a spudger or plastic opening tool in the exact location shown in the photograph.  
 Don't use a screwdriver as a pry tool as shown in this example.
- Carefully disconnect the keyboard ribbon cable from the motherboard, and remove the keyboard.

## Step 5



- Remove the five (5) 5mm screws shown here using the Phillips #0 screwdriver.

## Step 6

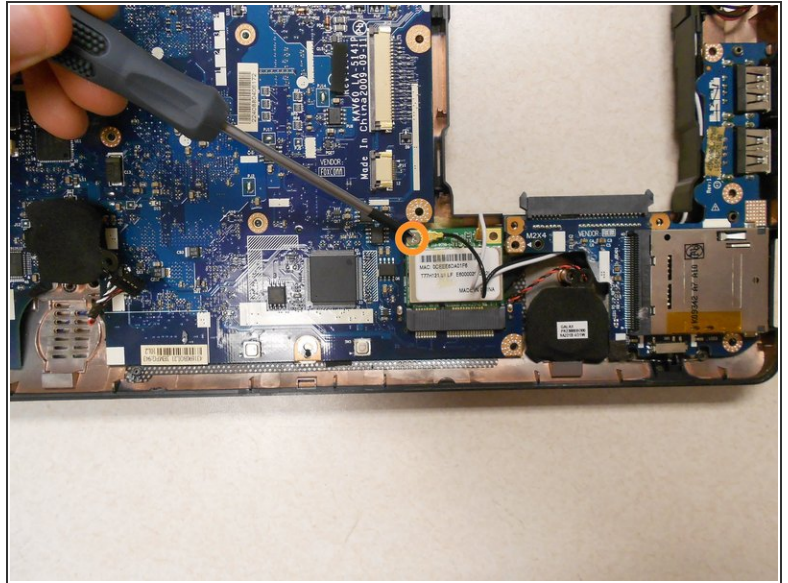


- Separate the upper cover from the back cover. It is possible to do this without a tool, but you may also use a plastic opening tool for added leverage.
- Be careful to keep even pressure all the way around the cover so that it is not bent beyond repair.
- Carefully disconnect two ribbon cables to complete the separation of the upper cover.

This document was generated on 2020-11-24 02:23:28 AM (MST).

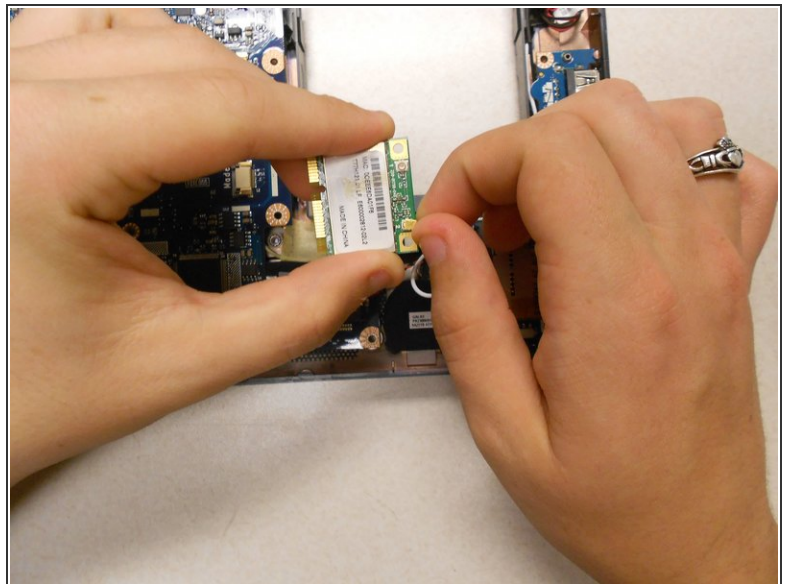
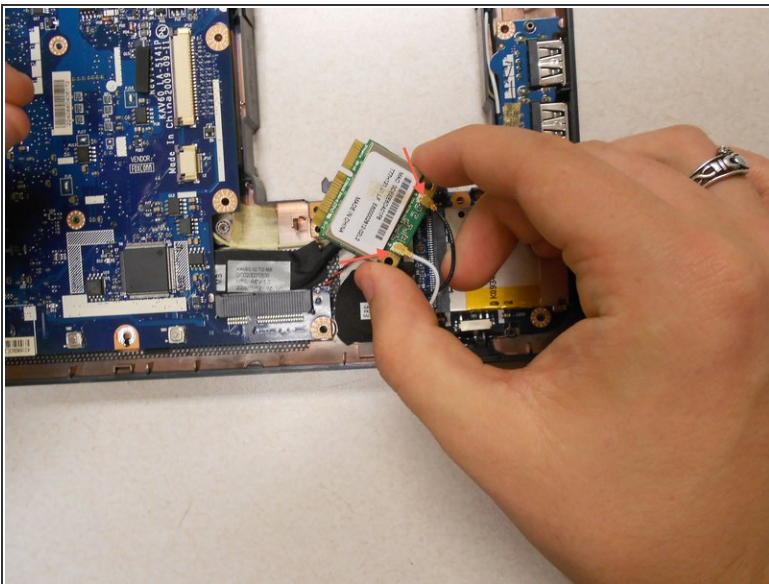


## Step 7 — WiFi Card



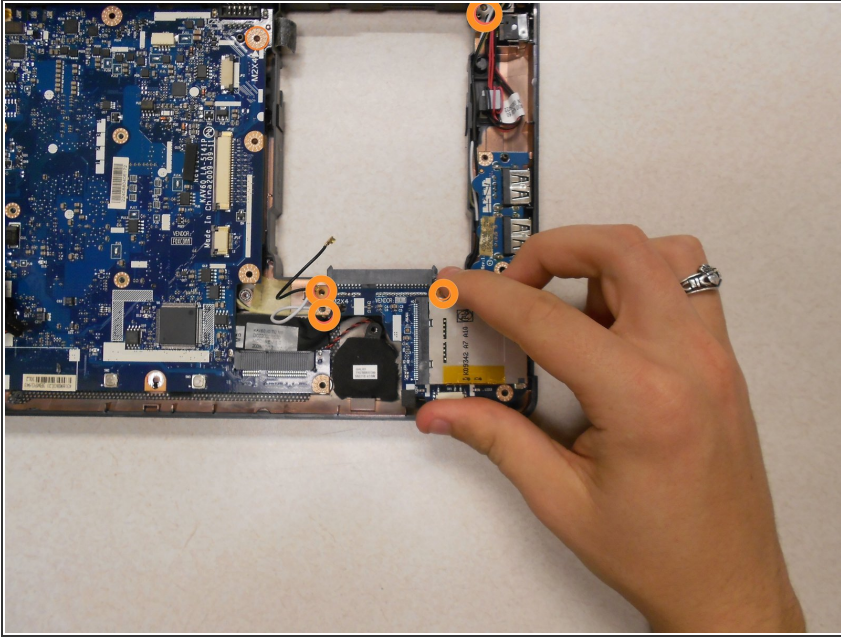
- The WiFi card is shown here.
- Remove the one (1) 5mm screw holding the card to the motherboard using a Phillips #0 screwdriver.

## Step 8



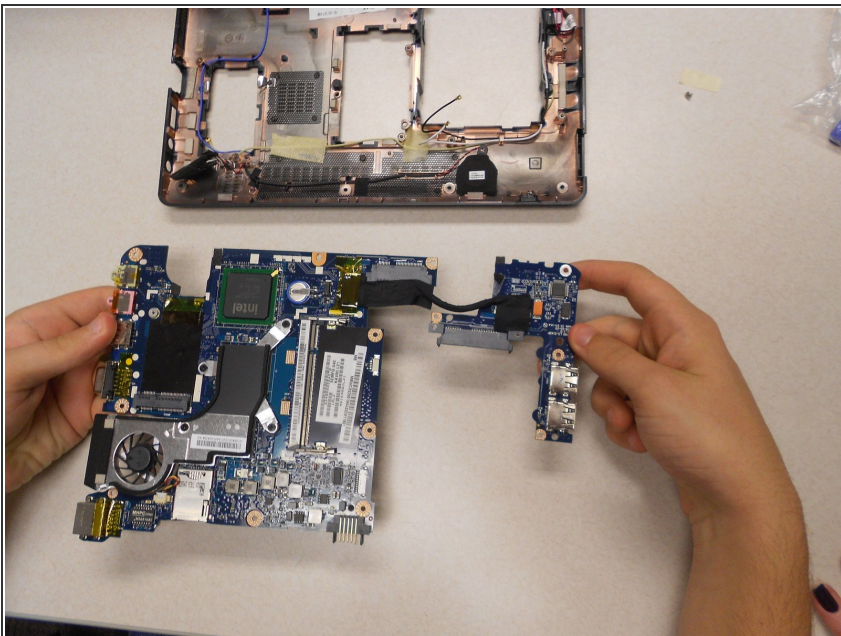
- Disconnect the wires on the WiFi card. This can be done easily by applying pressure to the connections until they pop off of the card.

## Step 9 — Motherboard



- Using a Phillips #00 screwdriver, remove the four (4) 5mm screws holding the motherboard in place.

## Step 10



- Remove the motherboard by lifting it gently from the bottom cover.
- ⓘ This image is the rear view of the motherboard.

To reassemble your device, follow these instructions in reverse order.