



Polaroid One-Step 600 Lens Replacement

This guide will show you how to replace the...

Written By: Doug Jimenez



INTRODUCTION

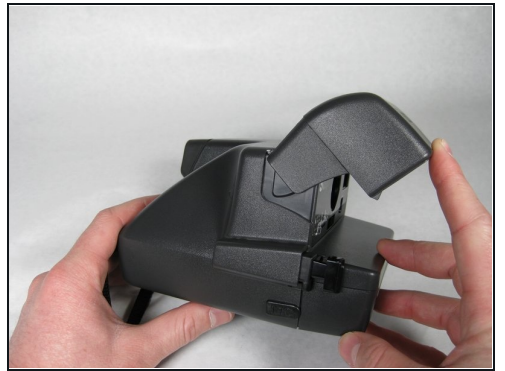
This guide will show you how to replace the lens on your Polaroid camera if it breaks or gets scratched. However, you should be careful with your Polaroid, as the plastic is very fragile.

TOOLS:

Spudger (1)

Tweezers (1)

Step 1 — Lens



- Open the flash compartment of the camera so it makes a 30 degree angle with the horizontal.

Step 2



- Separate the flash section of the camera from the main body by unhooking the sides with the spudger.

⚠ BE CAREFUL NOT TO YANK THE TWO SECTIONS APART BECAUSE THE BAND WIRE STILL ATTACHES THEM!

Step 3



- Fully open the battery/ cartridge compartment by sliding the side tab toward you.

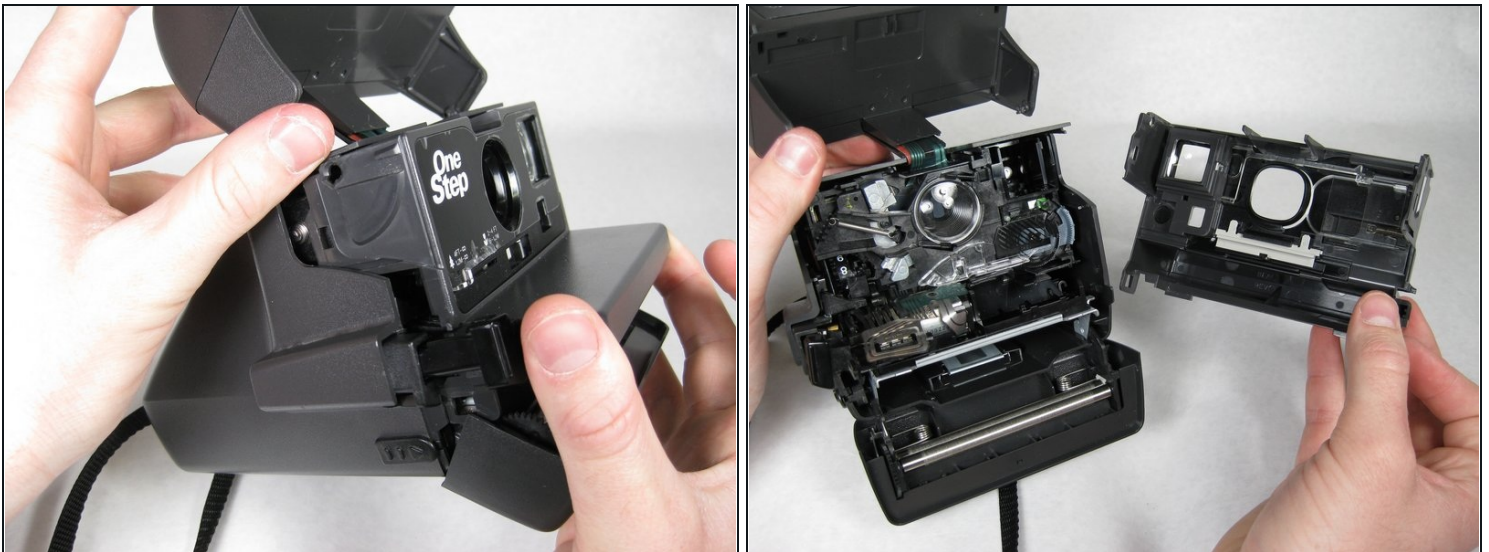
Step 4



- Insert spudger in between face of camera and sides where the four tabs are located.

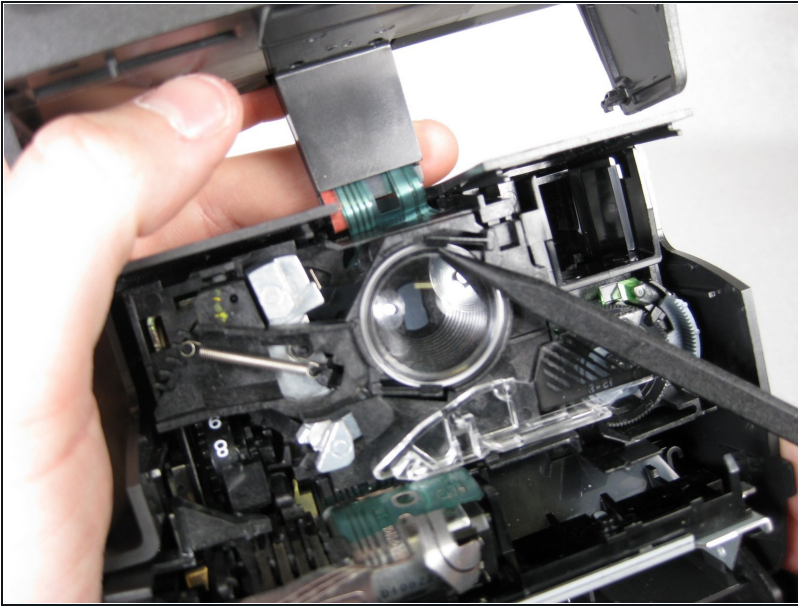
⚠ BE CAREFUL! The button that is pressed to take a picture may pop out of the camera at this step.

Step 5



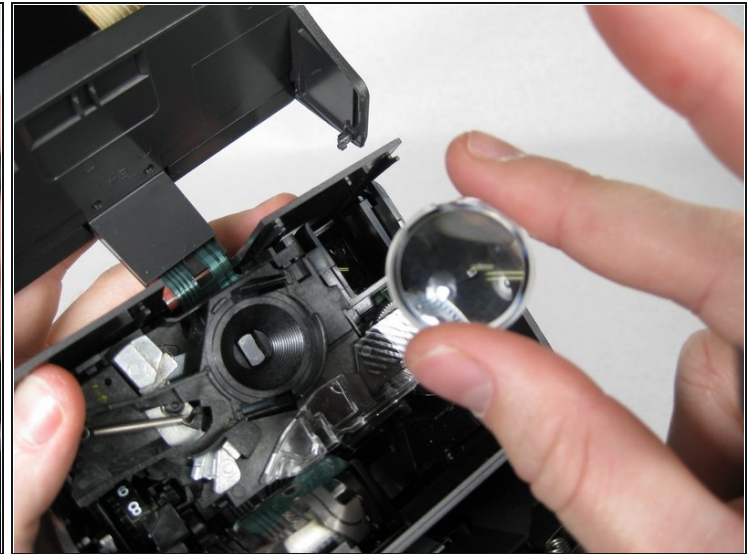
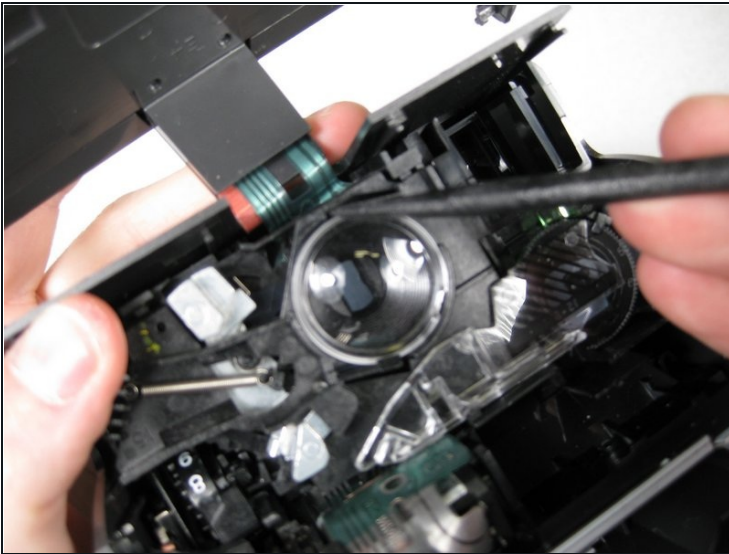
- Once tabs are released, pull face of camera straight out.

Step 6



- Use spudger to twist the notch on the lens into the opening to remove it.

Step 7



- Carefully use spudger to release lens, then lift lens out of camera with fingers.

⚠ CAUTION: LENS MAY POP OUT OF CAMERA; REMOVE CAREFULLY.

Step 8



- Clean old lens with a [microfiber cloth](#) or get a new lens to put back into the camera.

To reassemble your device, follow these instructions in reverse order.