



# Samsung SCH-U340 Top Casing Replacement

This guide will cover the removal of the...

Written By: Anish Sambamurthy



---

## INTRODUCTION

This guide will cover the removal of the Samsung SCH-U340 top casing.



### TOOLS:

- [Phillips #00 Screwdriver](#) (1)
-

## Step 1 — Battery



- Turn the cell phone so that the back side is facing you.
- Press the upper indent and slide the back cover down.

## Step 2



- Pull the battery up from indent at the bottom and slide it out.

## Step 3



- Set the battery aside.

## Step 4 — Top Casing



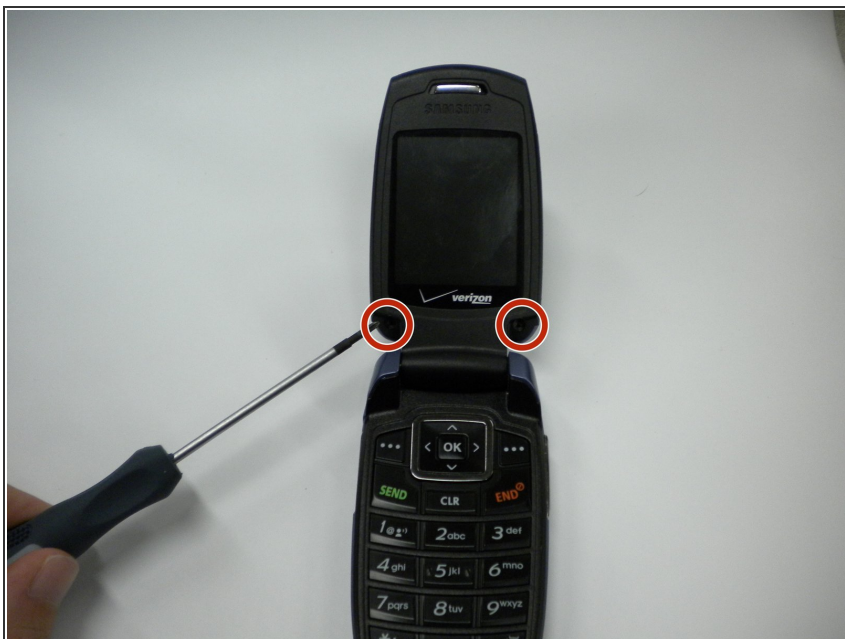
- The outer casing consists of two separate parts on the upper and lower halves of the device. The



upper outer casing is held on through a combination of screws and tabs.

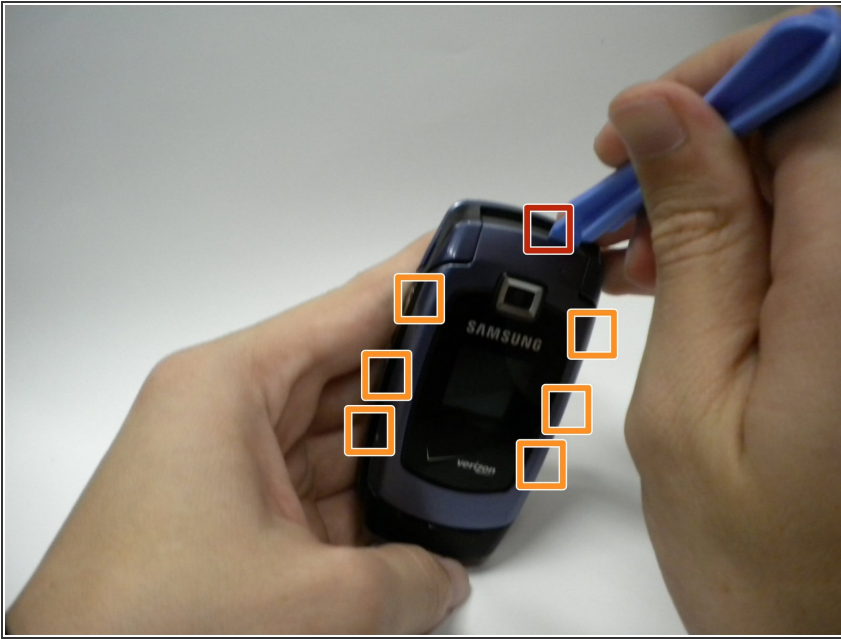
- First, remove the plastic plugs covering the screws with a spudger.

## Step 5



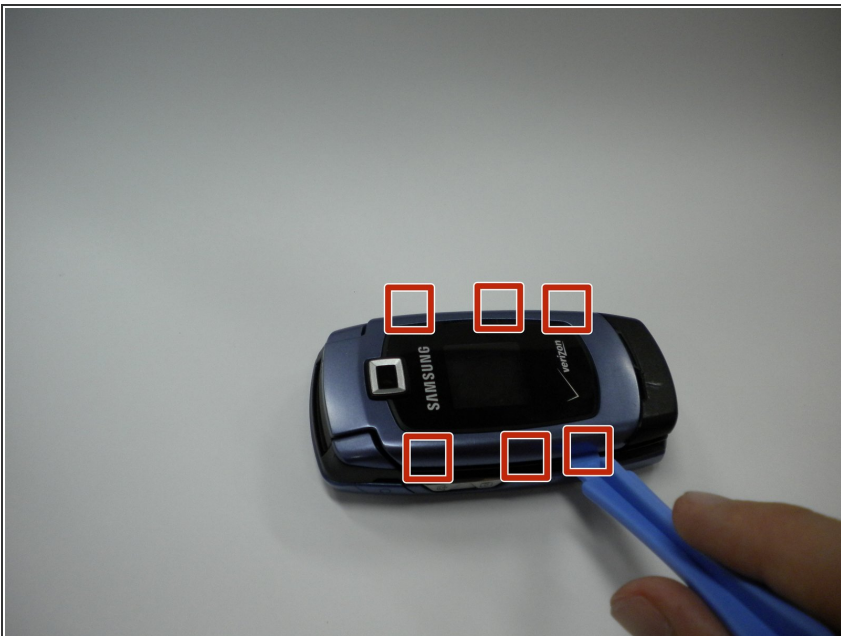
- Underneath the plugs are two small screws that can be removed with a small Phillips screwdriver.
- ⓘ The screws will need to be pried out after unscrewing them due to their size.
- ⓘ Take care not to lose the screws as they are small and have a tendency to roll.

## Step 6



- The outer cover is now secured with seven tabs: one large tab (marked in red) and seven smaller tabs (marked in orange).
- To begin removing the outer cover, start by prying the large tab up with a flat object.
- See next slide for details for smaller tabs.

## Step 7



- Continue to pry each smaller tab up, taking care not to break the tabs.
- ⓘ If disaster strikes and a tab is broken, the outer casing can still be put back on assuming the majority of the tabs are still intact.

## Step 8



- After the last tab is removed, tug gently on the outer casing to remove it.

**⚠ Don't pull too hard, or you may damage the wires connected to the speaker.**

To reassemble your device, follow these instructions in reverse order.