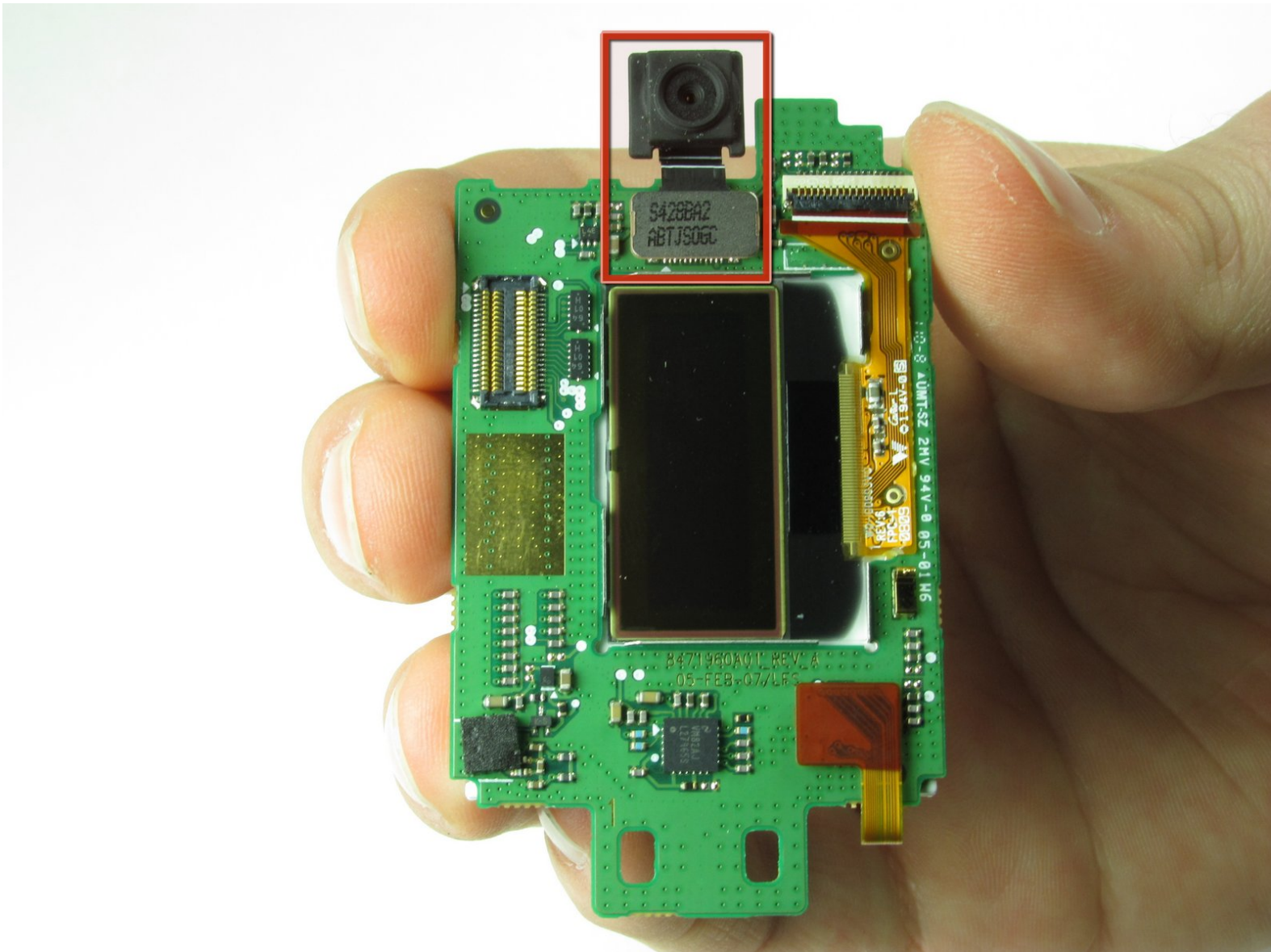




# Motorola W385 Camera Replacement

Written By: Koedy Brant



---

## INTRODUCTION

This will show you how to replace your camera.

---

### TOOLS:

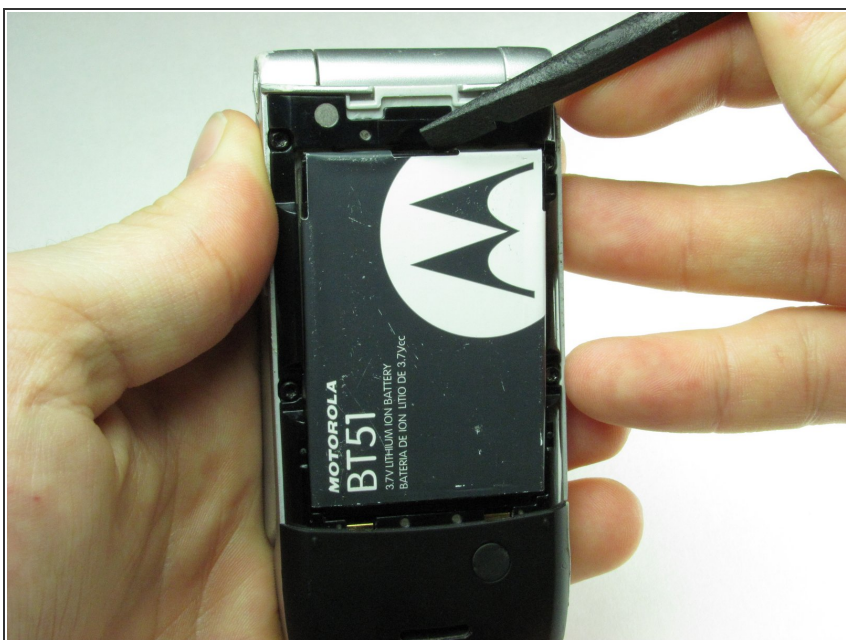
- [Spudger](#) (1)
-

## Step 1 — Battery



- Using your finger, press down on the clip holding the back cover on.

## Step 2



- Using the spudger or your finger, gently pull the battery out from the top.

### Step 3 — Front Casing



- Remove the four rubber pieces from the face of the phone using the sharp end of the spudger.
- ⓘ The rubber pieces are held in with a mild adhesive.

### Step 4




- Remove the four Torx-6 screws from underneath the rubber pieces.



## Step 5



- Close the phone before proceeding.
  - Using the flat end of the spudger, insert it under the plastic at the top left of the phone.
  - Gently, although a small amount of force is required, use a twisting motion to pull the plastic casing away from the body of the phone.
  - Continue to move around the phone counter clockwise until the casing is separated from the body.
-  It is not unusual for it to pop off before making it back to the starting point.

## Step 6



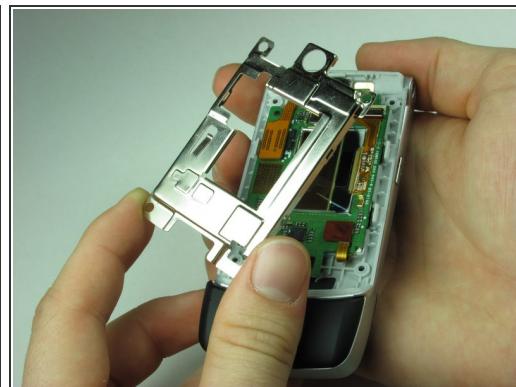
- If the casing has not popped off of the body, remove it carefully from the the phone.

## Step 7 — Top Logic Board



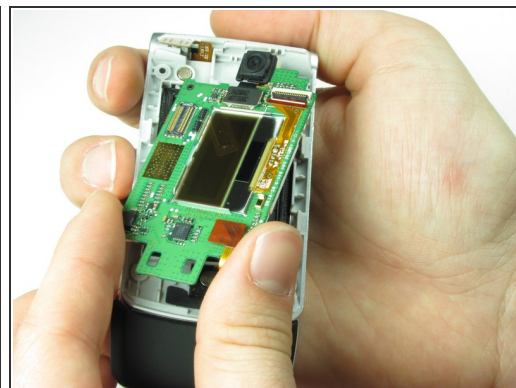
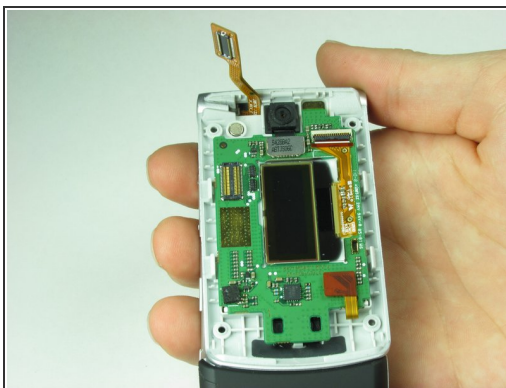
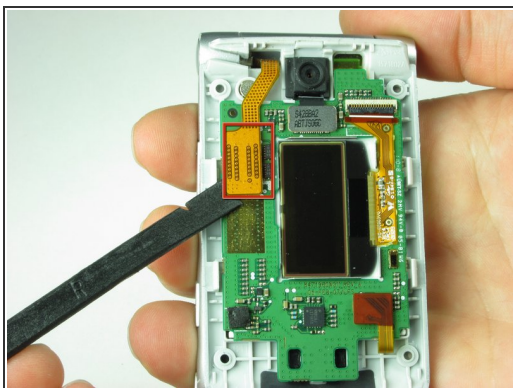
- After completing Steps 3-6 in the casing repair guide, your phone should look like this.

## Step 8



- Use the spudger to unhinge the four clips around the metal casing of the top logic board.
- Gently take off the metal casing of the logic board.

## Step 9

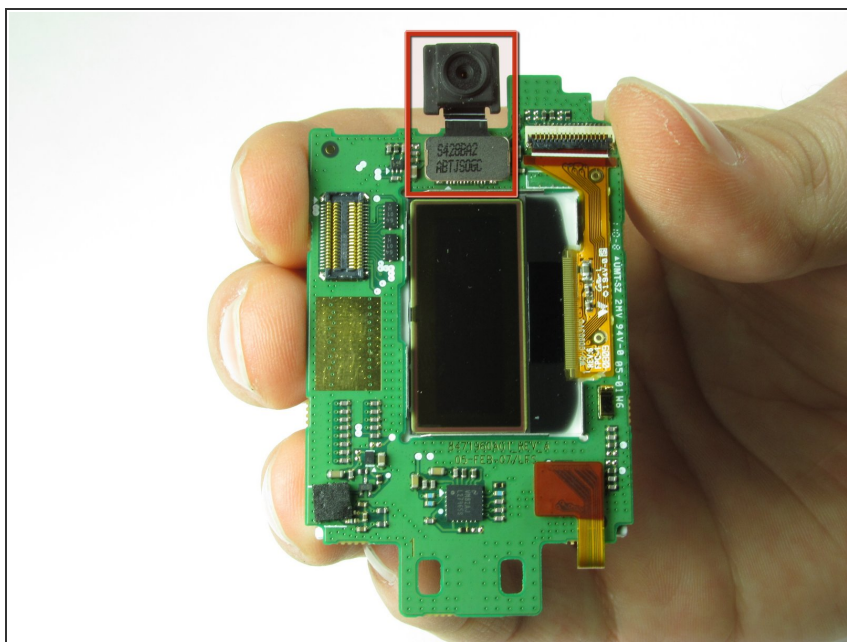


- Use spudger to gently disconnect the ribbon cable from phone.

⚠ Gently remove Logic Board making sure not to damage any other components.

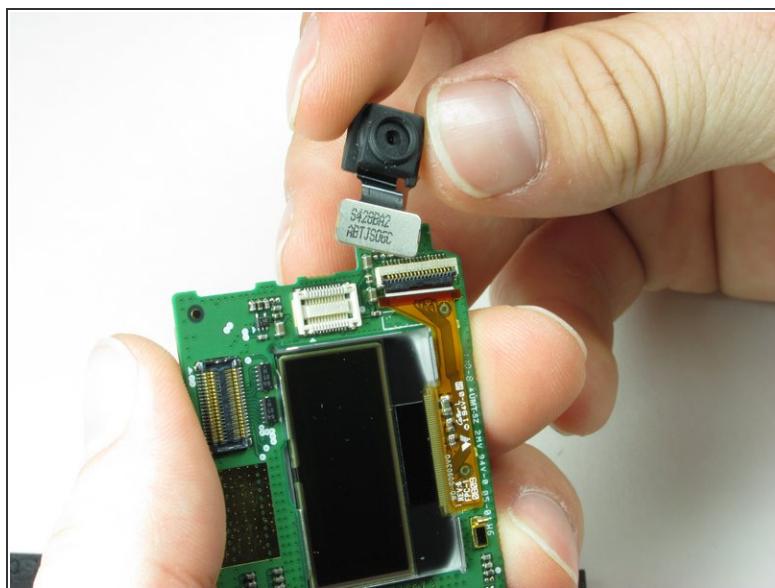
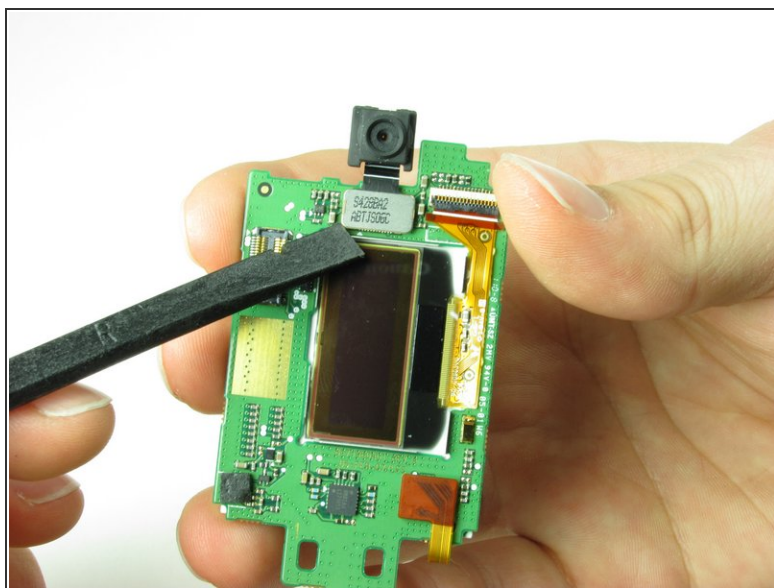


## Step 10 — Camera



- Find the camera on the board.

## Step 11



- Take your spudger and place it just under the camera as shown.
- With a small force, the camera should remove easily.



To reassemble your device, follow these instructions in reverse order.