



# Gaggia Coffee Teardown

Written By: tbraunshausen



---

## 🔧 TOOLS:

[Pro Tech Toolkit](#) (1)

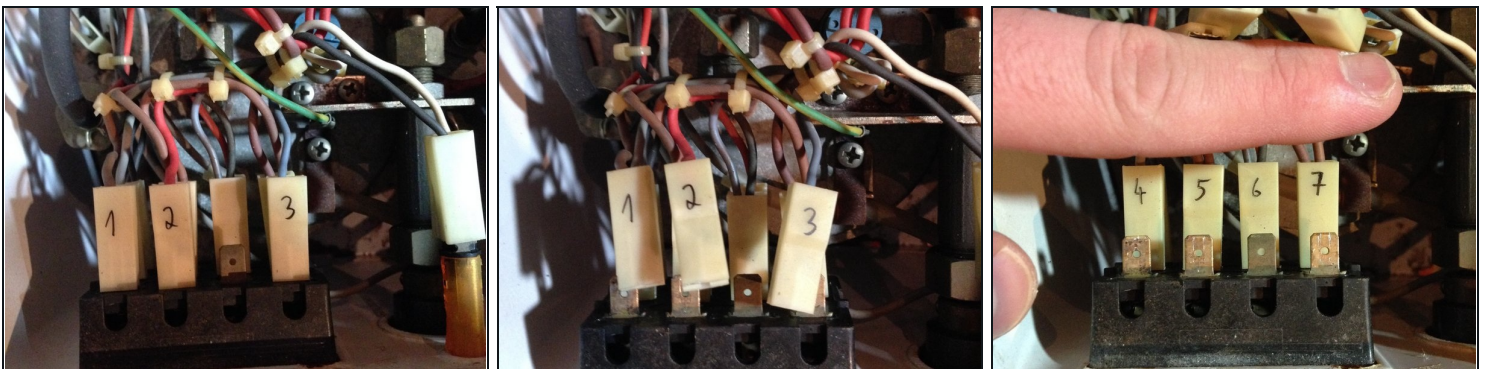
---

### Step 1 — Gaggia Coffee Teardown



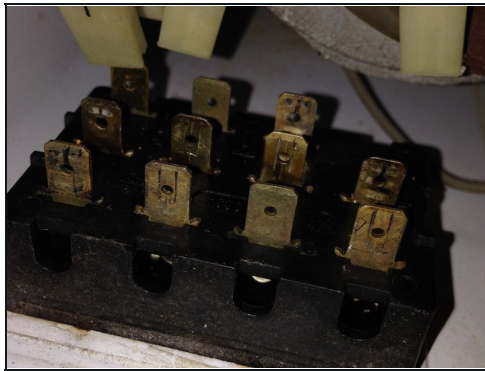
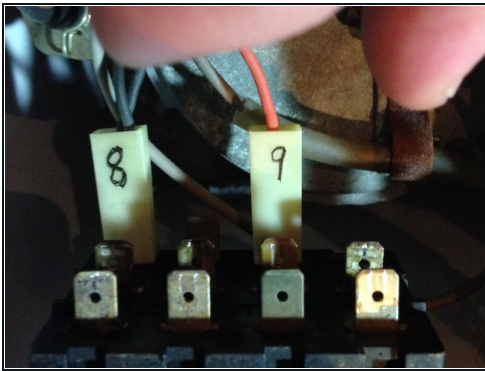
- Free the top by unscrewing the 2 screws in the front shiny cupwarmer section and the 2 screws in the plastic part in the back.
- Carefully take off the top to reveal the inside of the Gaggia.
- Be sure to unplug the power cord before working on your Old White Coffee Gaggia!!

### Step 2



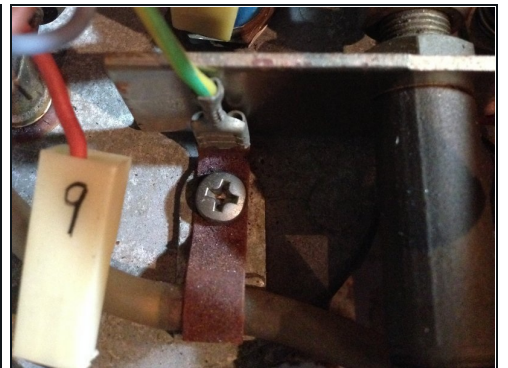
- Label the connectors on the top connecting the wires to the switch assembly with a marker or ball pen. This way you'll be able to put them in the right place when reassembling your device.
- Gently pull the labeled connectors of the switch assembly.
- Continue with second row.

### Step 3



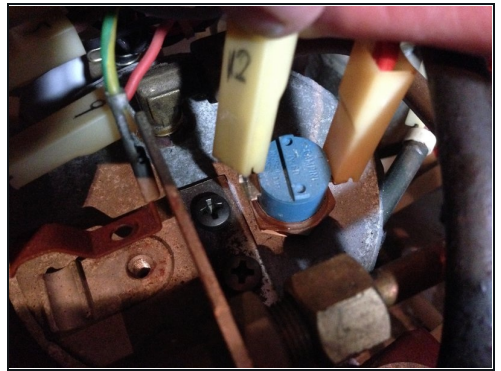
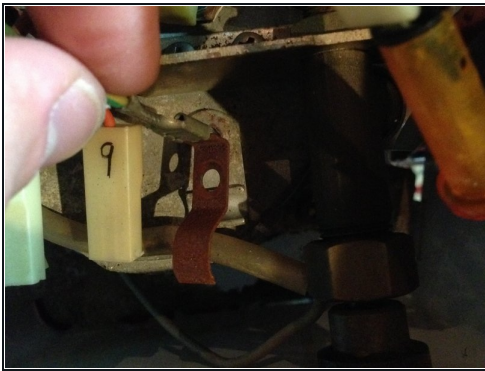
- Pull the last two connectors off the switch assembly.
- The switch assembly is held in place by two clamps on its sides that have to be pushed in.
- Gently pull/push the switch assembly to the front to release it from the case.

### Step 4



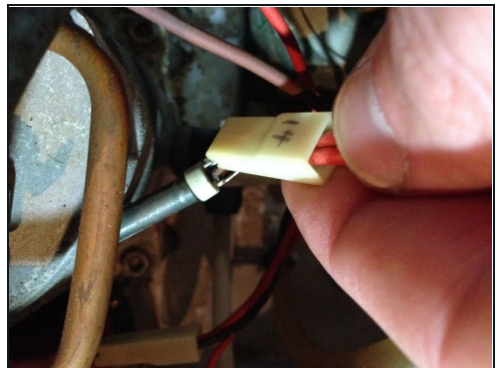
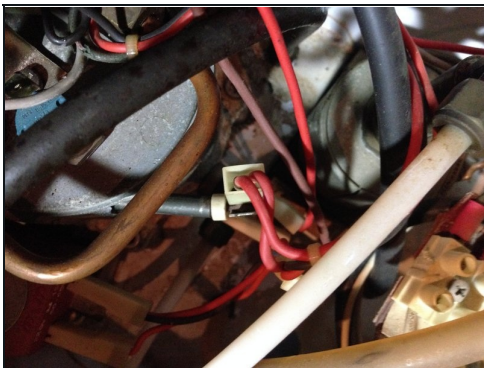
- Label and pull off the connectors to the warning light just right where the switches used to be.
- There is one upper and one lower, divided by a plastic tab.
- Next, unscrew the tab securing the grounding wire and the water hose to the top of the boiler.

## Step 5



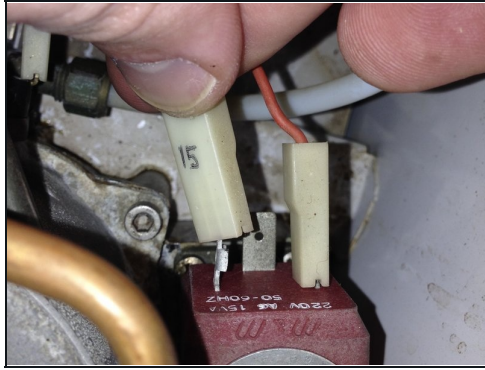
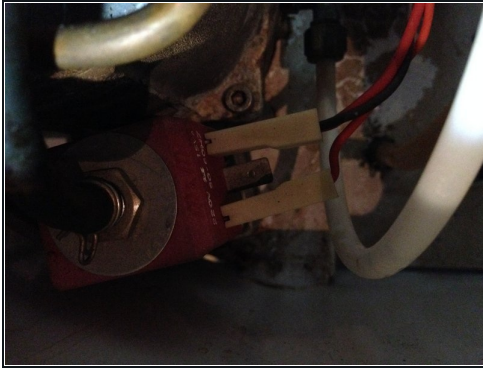
- Free the tab with the grounding wire.
- Next up is the two connectors that go into the blue (thermostate?) on the top of the boiler.
- Label and gently pull off the first...

## Step 6



- ...and the second connector.
- Next thing to pull off is the connector that connects the red wire to the the duct that protrudes outward of the boiler. (The heating element)
- Remember to label every connector you take off to remember where it goes.

## Step 7



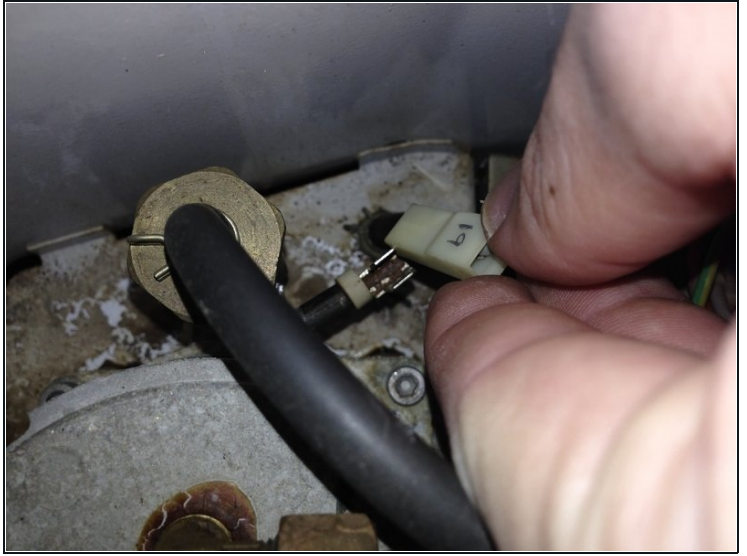
- At the magnetic valve next to the big round boiler, there are two more connectors to label and pull off.

## Step 8



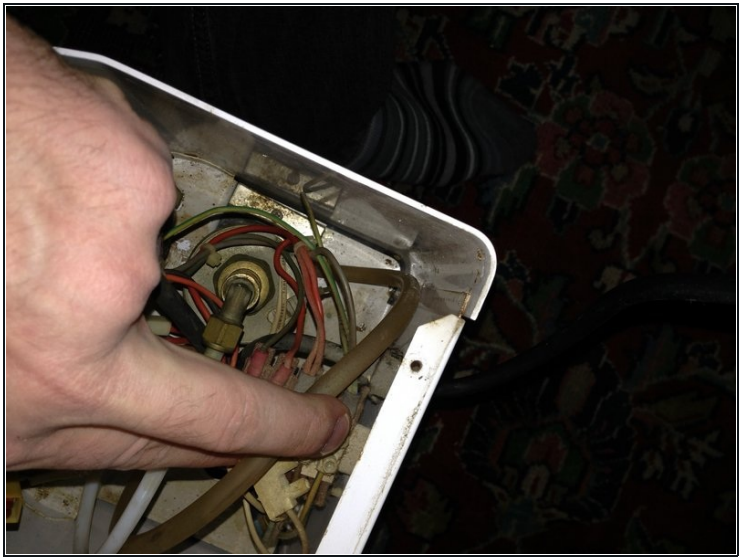
- Still not done with labelling and pulling off connectors, this time at the back of the boiler.

## Step 9



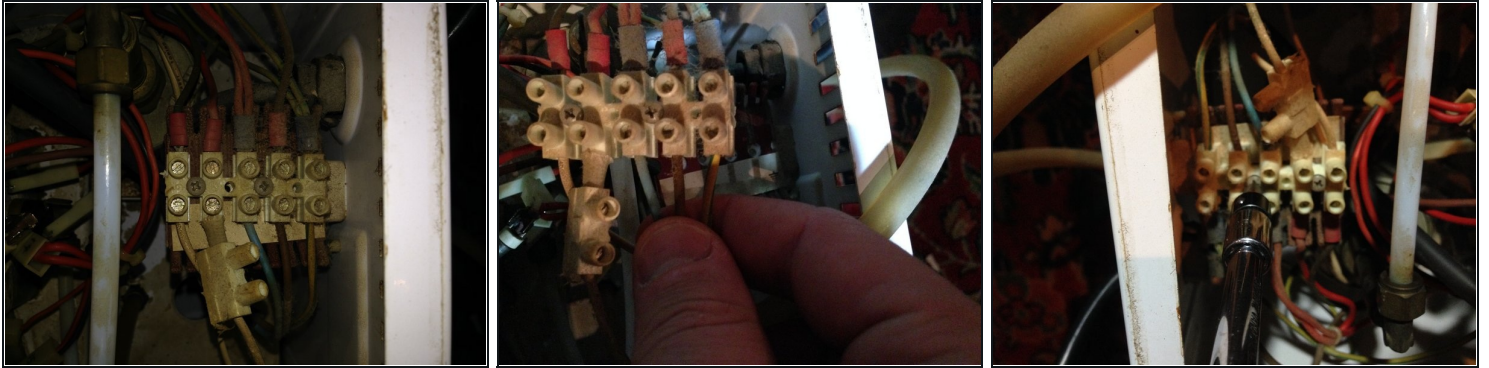
- Left of the boiler and a little hard to reach sits connector no. 19 (if you followed my labelling method) once again on a ducty thing.
- Right next to it, you can see the Over Pressure Valve Assembly (with the black hose coming out of the top)

## Step 10



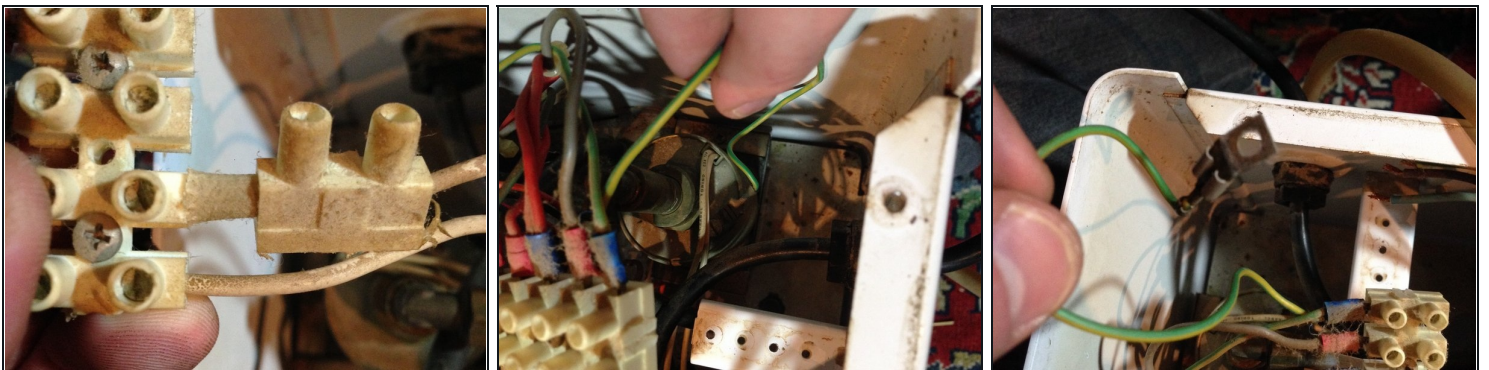
- Here you see the water intake hose, sucking water from out of the water tank and delivering it to the water pump.
- The hose connects to the pump at its bottom side, so you can't quite see it.
- The hose is secured to a black plastic piece in the bottom of the case by a metal clip that can be loosened with pliers.
- Take off the hose and be careful not to lose the metal clip!
- You can't take off both endings yet as the end that goes into the pump is still hidden!

## Step 11



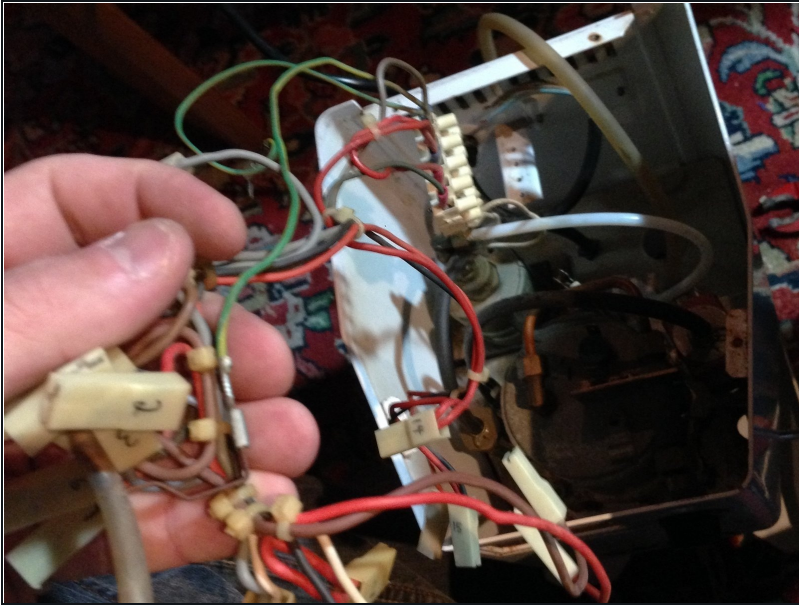
- Very dirty but functional, this is where the power cable is connected to all the wires we just freed.
- You will only need to take out the cables on the right (bottom side on the picture), starting with the 3 from the power cable. (ground, brown and blue)
- Unscrewing the whole luster terminal can make your life easier here.

## Step 12



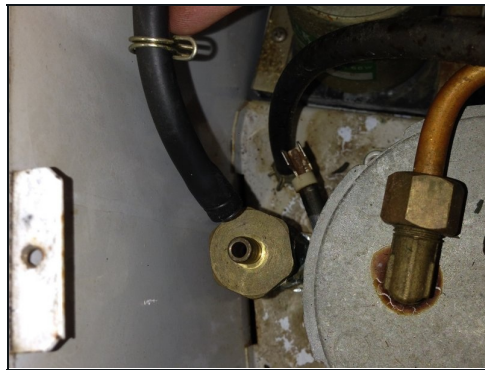
- Next, remove the two white cables (distinguishable by the one having an extra luster terminal)...
- ...and the grounding wire that go to the water pump.

### Step 13



- You can now carefully pull the whole wiring out of the machine.
- Mind any cables that still might be connected or stuck!

### Step 14



- Next, we will take the black water hose, that connects the Over Pressure Valve to the water tank, off.
- Pinch the clip holding the hose in place together to release it

## Step 15



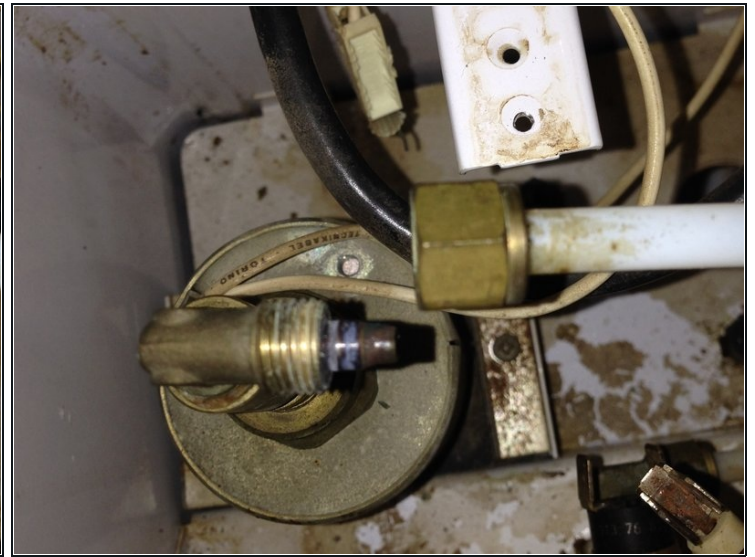
- Label the hoses as well as they have different lengths!
- Proceed with the 2nd black hose that goes from the magnetic valve to the water outlet in the front.

## Step 16



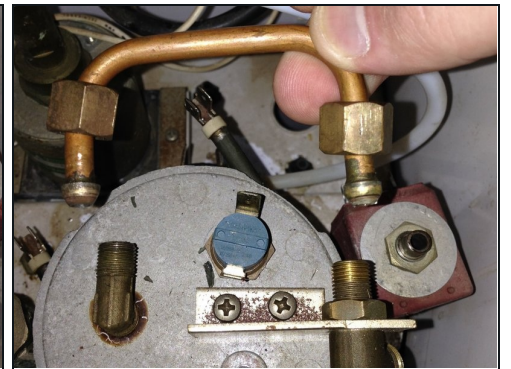
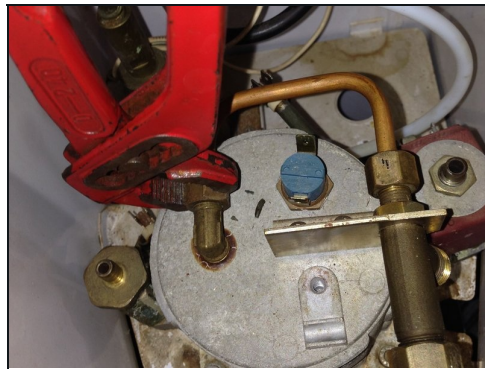
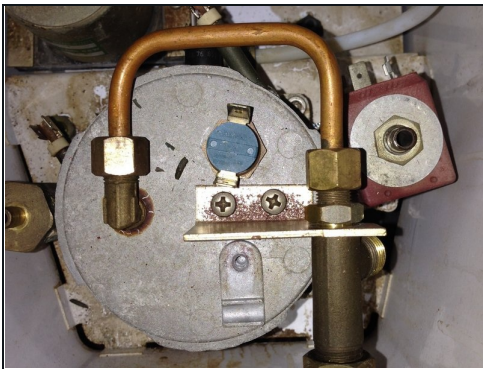
- With all silicone hoses disconnected, proceed by unscrewing the fitting that connects the steam lance to the steam valve.
- Take the steam lance out through the top.

## Step 17



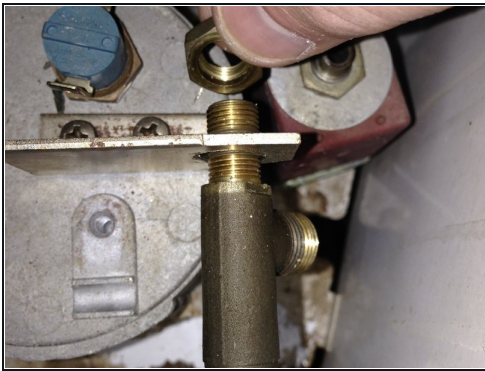
- At the top of the water pump, there is a high pressure teflon hose that needs to be unscrewed in order to free the pump.

## Step 18



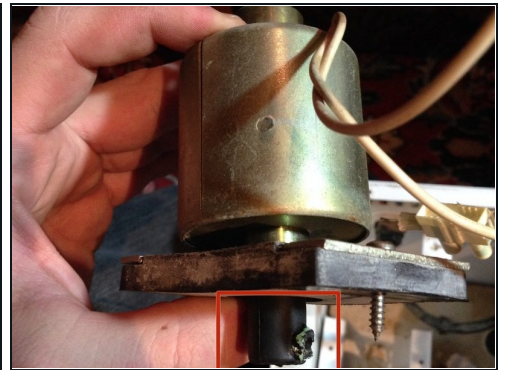
- The steam valve is connected to the top of the boiler by a conducto pipe.
- Unscrew both endings and take the duct off.

## Step 19



- Unscrew the nut securing the steam valve assembly to the top of the boiler.
- You can just pull the steam assembly out of the way for now.
- If you have the fitting Allen key, you can also take out the steam assembly by taking off the black knob and pulling the assembly out to the back.

## Step 20



- The vibratory water pump sits on a rubber fitting.
- Unscrew both screws to free the pump.
- Take out the whole pump/fitting assembly.
- Unfortunately, the black rubber thing on the bottom of the pump originally connecting to the high pressure teflon hose is broken, be careful with this piece as there may not be a replacement!

## Step 21



- Let's have a look at the portafilter holder and the screen at the front of your machine. As you can see, mine has its share of rust and gross dirt.
- Unscrew the single screw in the middle of the screen.
- The screen might be held in place by dirt and coffee of decades past.

## Step 22



- Ewwwww...
- I managed to take the screen off by jiggling a little on it with a screwdriver.
- There are 4 screws holding the outer ring in place, unscrew those and the outer ring should come free.

## Step 23



- With the outer ring/portafilter holder off, 2 more screws are uncovered.
- Unscrew those.

## Step 24



- There still is a black rubber gasket that needs to be taken off.
- Not sure if those are still for sale, so check if you might use this gasket again.

## Step 25



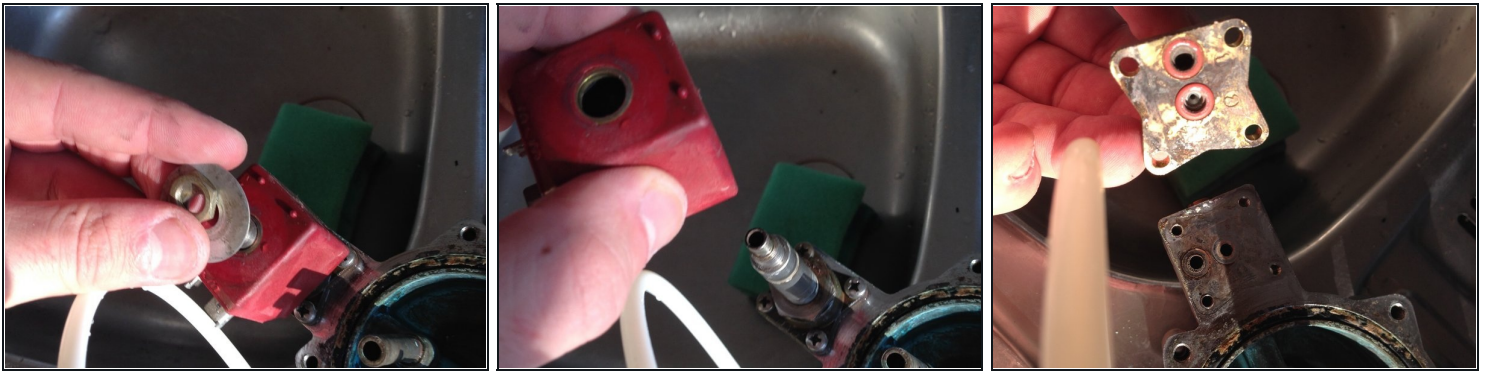
- Return to the inside of the machine and unscrew the 4 screws at the top of the boiler. Be careful not to strip the screws!! Gently pull the top of the boiler off.
- Prepare to be grossed out.
- Somewhere below the white/brownish stuff in the 3rd picture there is a black gasket hiding. Can you find it?

## Step 26



- Take out the bottom part of the boiler.
- Looks very empty now.

## Step 27



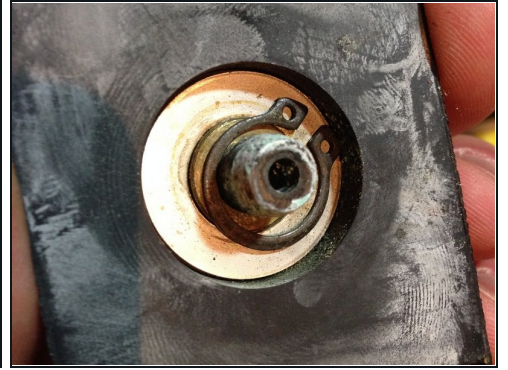
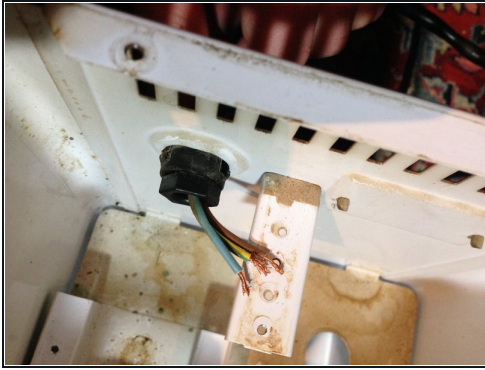
- You can further disassemble the lower part of the boiler.
- Unscrew the nut holding the magnetic valve in place, and pull all parts off.
- Unscrew the 4 screws at the bottom of the valve assembly and it is free.

## Step 28



- The Over Pressure Valve can also be unscrewed and taken apart.
- Unscrew the thing holding the screw in place.

## Step 29



- The power cable can be pulled out if you turn the plastic nut a little bit.
  - Close-Up of the pump, Ulka H53.
  - I hope I can get a replacement for the rubber thing that went here...
-