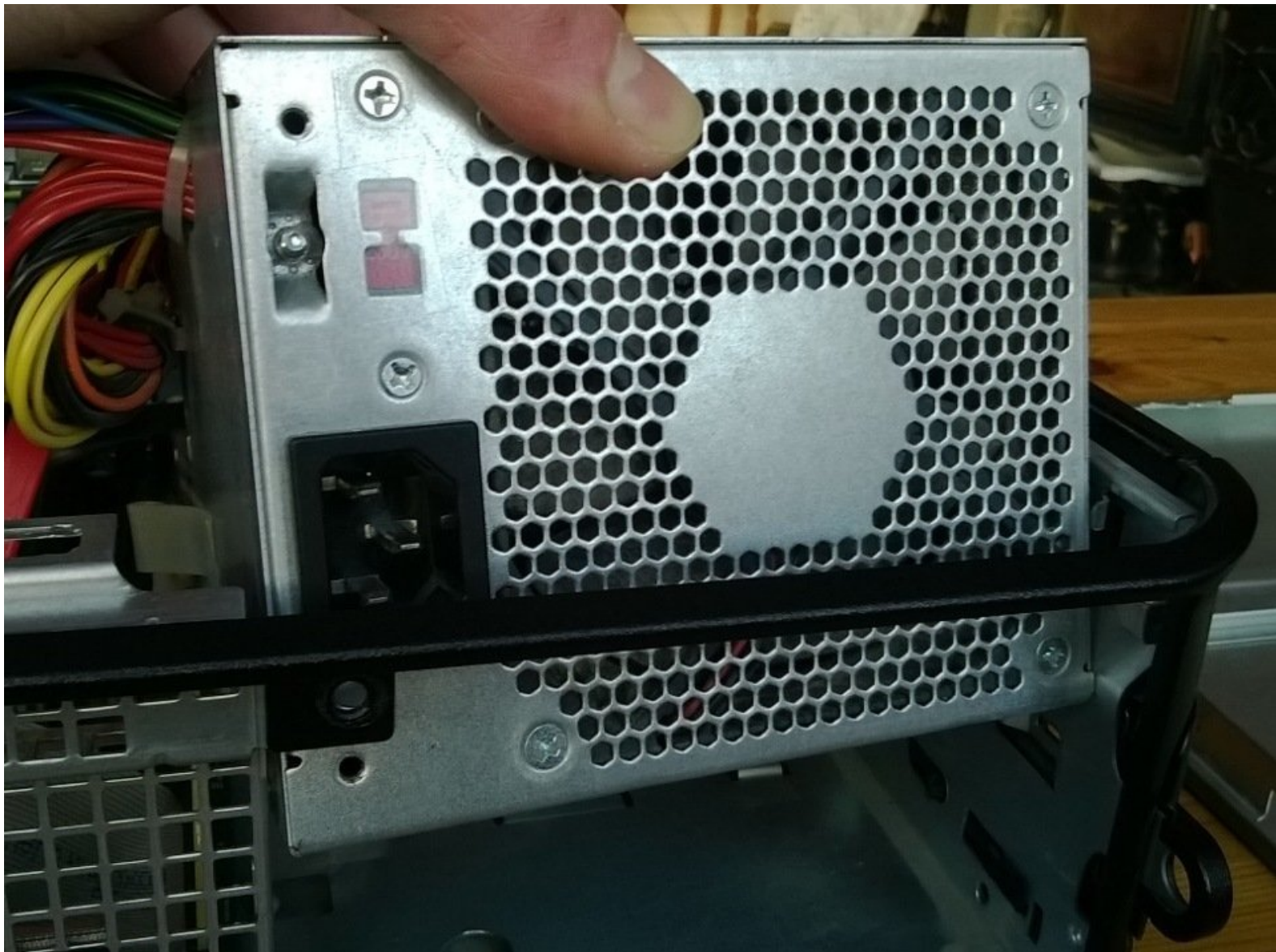




# Dell Optiplex 330 SFF Power Supply Replacement

How to replace the Power Supply on a Dell Optiplex 330 SFF

Written By: Oli



## INTRODUCTION

This shows you how to replace a blown power supply on a Dell Optiplex 330 small form factor PC. Power supplies are normally the first part to go on a desktop and will result in a solid amber power light illuminated on a Dell desktop.






### TOOLS:

- [Pro Tech Toolkit](#) (1)
-

## Step 1 — Power Supply



-  Before you start make sure that all of the leads have been disconnected from the computer.
-  It is strongly recommended that you leave the computer off for at least 15 minutes to allow the components to cool down.
-  You should also ground yourself before starting by using an anti-static band or touching a metal object connected to the ground. This prevents static build up which can destroy sensitive components.

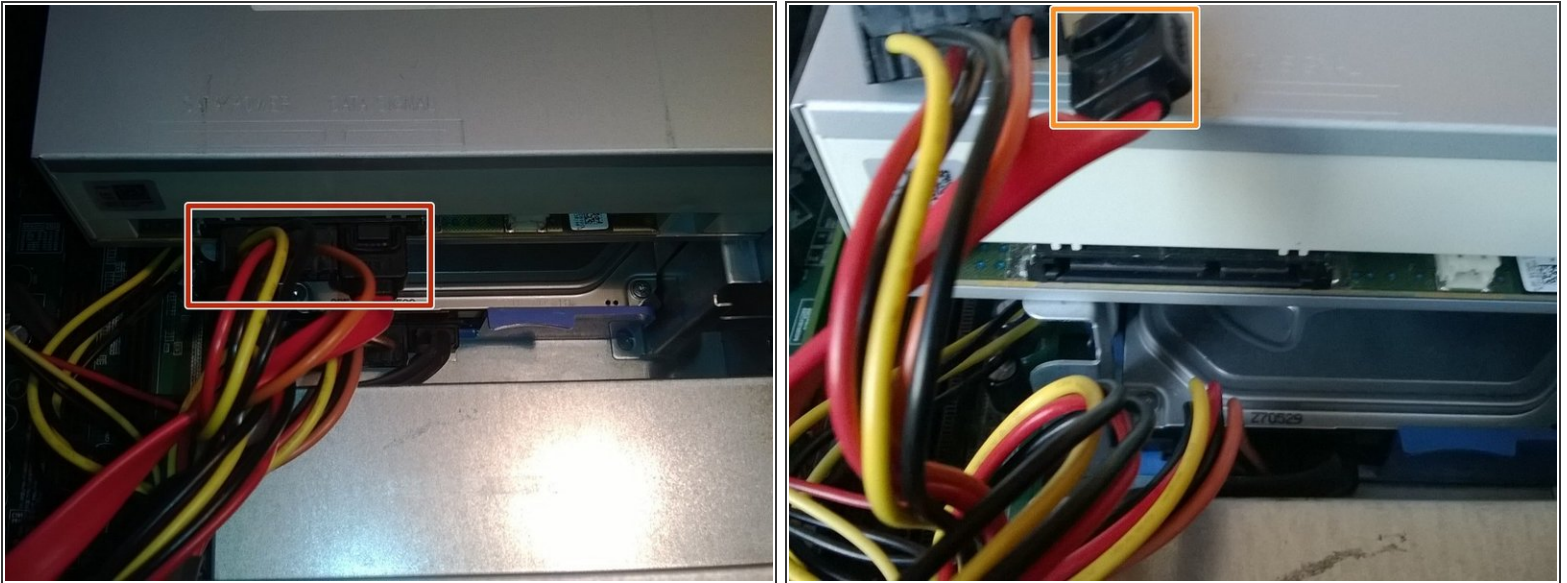
## Step 2



- Round the back of the computer next to the power supply you will find a latch.
- In order to release the case pull this latch straight back - this should make the back of the case pop up.
- You can now just lift the case up and away from the computer.



## Step 3



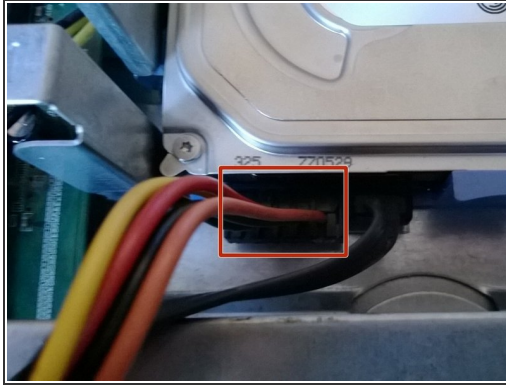
- Before you can remove the power supply you first have to remove the optical drive.
- First find the two cables going into the optical drive - they are shown in the first picture.
- Gently pull both of them out - one of the cables might have a little latch that you have to press in order to release it from the optical drive.

## Step 4



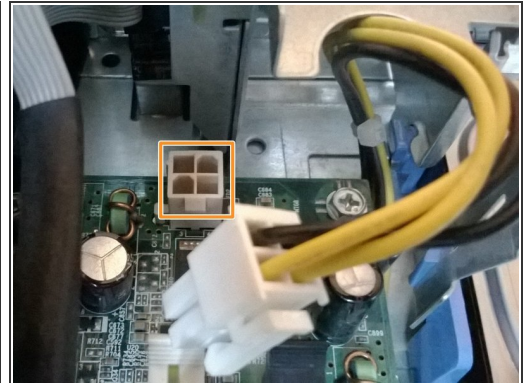
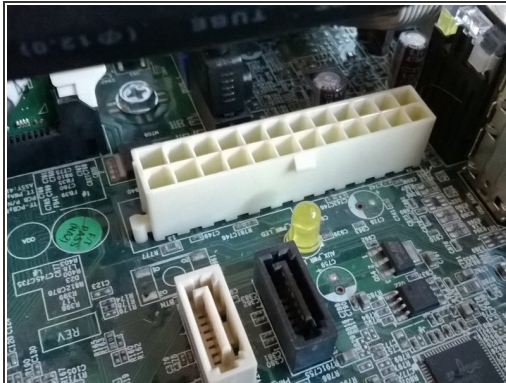
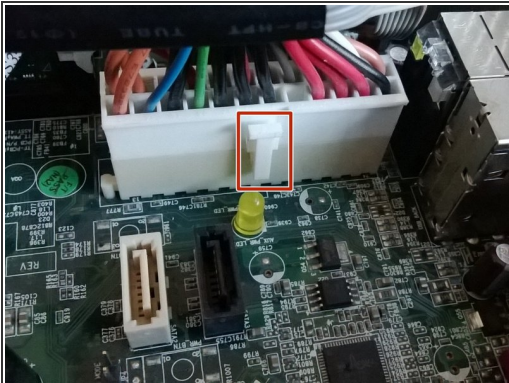
- To remove the optical drive first find the little blue latch located next to the optical drive.
- Pull the latch straight up - at the same time pull the optical drive back. It should now be easy to remove it from the computer.

## Step 5



- It should now look like the first picture with the optical drive removed.
- You now need to remove the power cable from the hard drive.
- Gently pull the cable out of the back of the hard drive.

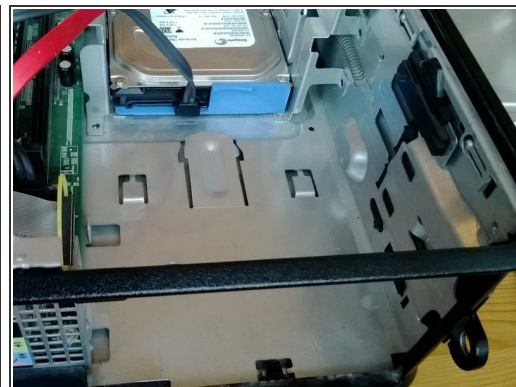
## Step 6



- You now need to remove the power cable connected to the motherboard.
- Locate the large 24 pin power connector - it is located next to the power supply. Carefully press down on the little latch and pull straight up to release.
- Repeat this procedure for the little 4 pin connector located between the processor and hard drive.



## Step 7



- In order to remove the power supply you have to first remove two screws connecting the power supply to the case.
- You can now slide the power supply straight back and lift it straight up and out of the computer.
- It should look like the last picture after the power supply is removed.

To reassemble your device, follow these instructions in reverse order.