



PowerBook G4 Aluminum 17" 1-1.67 GHz LCD Replacement

Written By: Andrew Bookholt



INTRODUCTION

Use this guide to save money by replacing only the LCD, not the entire display.



TOOLS:

- [Heat Gun](#) (1)
- [Metal Spudger](#) (1)
- [Phillips #00 Screwdriver](#) (1)
- [iFixit Opening Tools](#) (1)
- [Flathead 3/32" or 2.5 mm Screwdriver](#) (1)
- [Spudger](#) (1)
- [T8 Torx Screwdriver](#) (1)



PARTS:

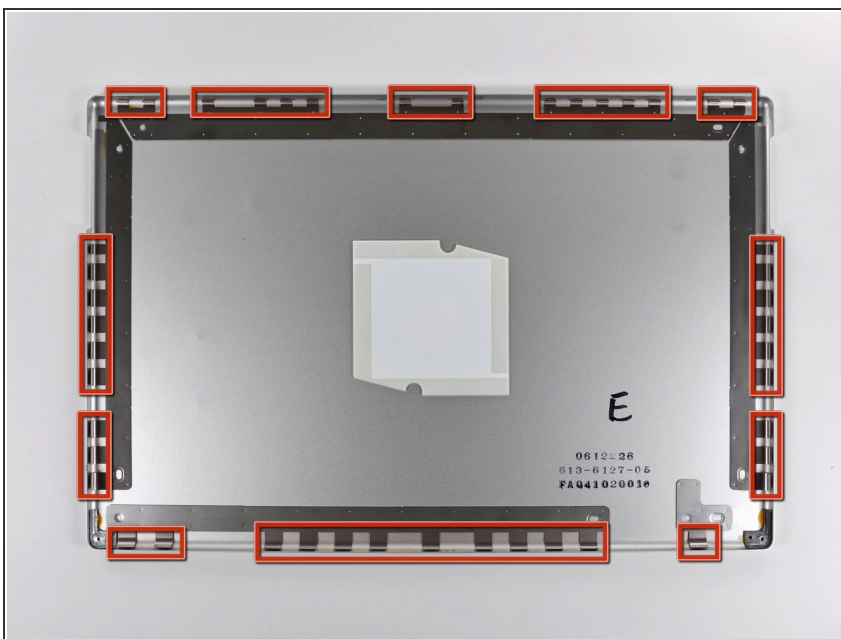
- [G4 Aluminum 17" 1/1.33/1.5/1.67 GHz \(LR\) LCD Panel](#) (1)

Step 1 — Rear Display Bezel




- Remove the two 6.3 mm Phillips screws near the lower left and right corners of the display.
- ⓘ Removing these two screws may be difficult. It is helpful to open the display as much as possible for clearance to use a screwdriver. Also, a combination of #00 Phillips and small flathead screwdrivers along with a pair of tweezers may aid in removal.

Step 2




- ⓘ The picture at left (rear panel already removed) shows the locations of the metal clips (shown in red) that snap on to the front display bezel. In the next few steps, you will use a small flathead screwdriver to release these clips from a ridge around the perimeter of the front display bezel.

 When prying in the following steps, be sure not to damage the antenna cables that run around the perimeter of the front display bezel.

Step 3



- Insert the flat end of a spudger between the rear display bezel and the plastic rim attached to the front display bezel near the lower right corner of the display.

 **Do not** try to insert the spudger between the front display bezel and its plastic surround.

- While carefully prying the rear display bezel away from the display assembly, use a small flathead screwdriver to pry the small steel clip nearest the bottom right corner of the display away from the edge of the front display bezel.
- Repeat the above procedure until you've released all the clips along the right side of the display.

Step 4



- Slightly lift the recently-freed corner of the rear display bezel to separate the clips with a spudger along the span of the clutch hinges.

Step 5



- Insert the flat end of a spudger between the rear display bezel and the plastic surround of the front display bezel near the lower left corner of the display.
- Carefully pry the rear display bezel away from the front display bezel to expose the metal clips along the left side of the display.
- Repeat the previous procedure to release the clips along the left side of the rear display bezel.

Step 6



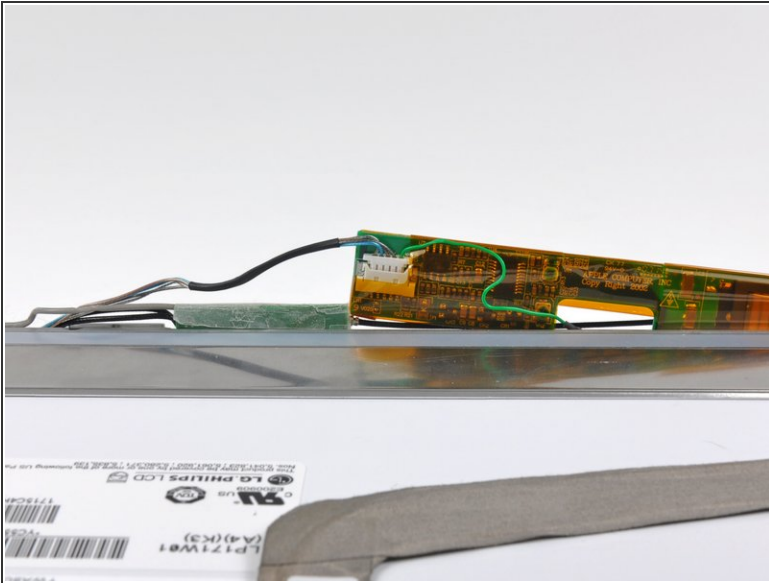
- Slightly lift the lower edge of the rear display bezel and push it toward the top edge of the display, releasing the clips along the top edge of the rear display bezel.
- Remove the rear display bezel and set it aside.

Step 7 — Display Inverter



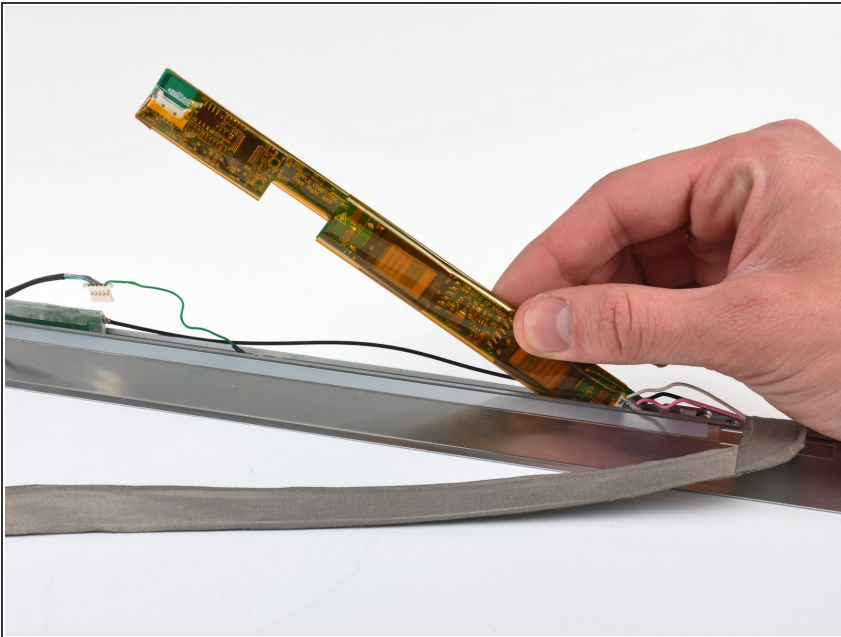
- ⓘ If necessary, remove the tape covering the display inverter.
- Carefully lift the display inverter board from the side nearest the display data cable connector.
- ⚠ The display inverter is an extremely thin circuit board that is easily broken. Do not excessively bend or twist it during removal.

Step 8



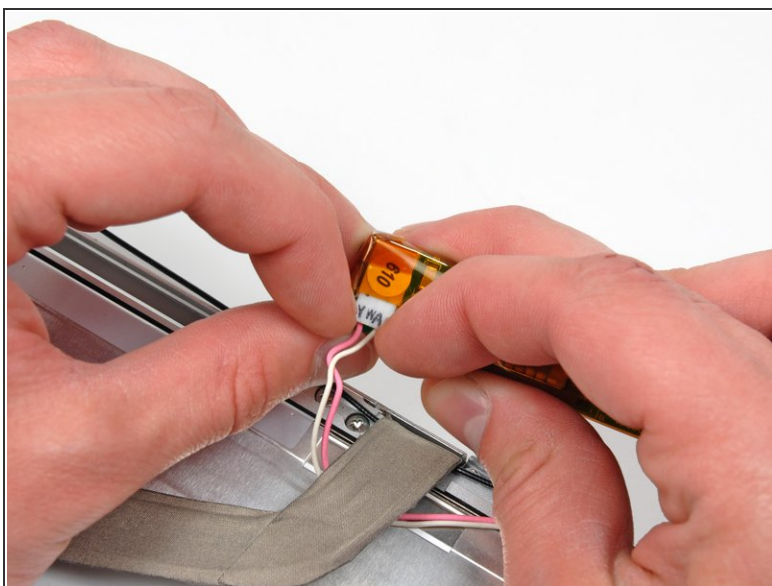
- Use your fingernails to pull the ears on both sides of the inverter cable connector away from its socket on the inverter board.

Step 9



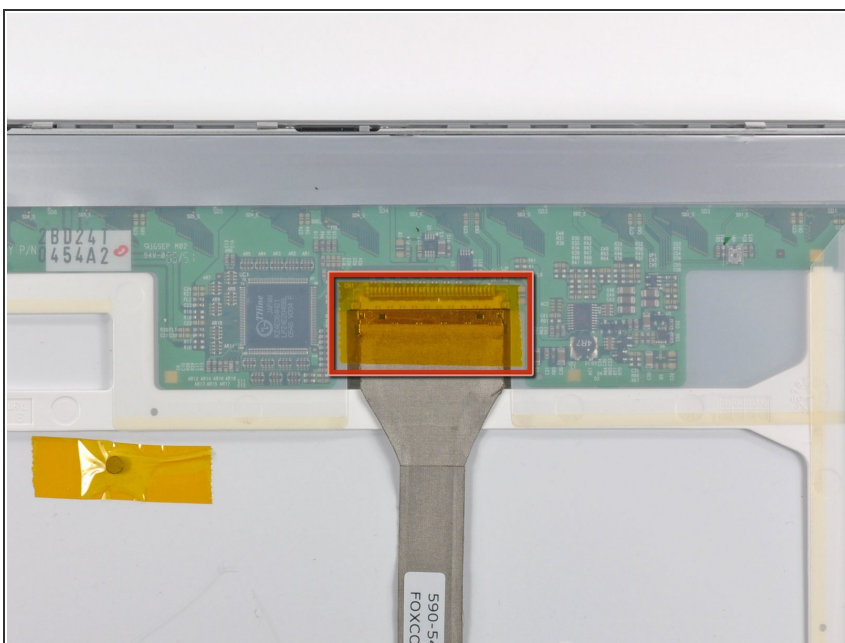
- Carefully lift the display inverter out of the clutch cover.
- ⚠ Don't try to remove the inverter just yet. It is still attached via the backlight cables.

Step 10



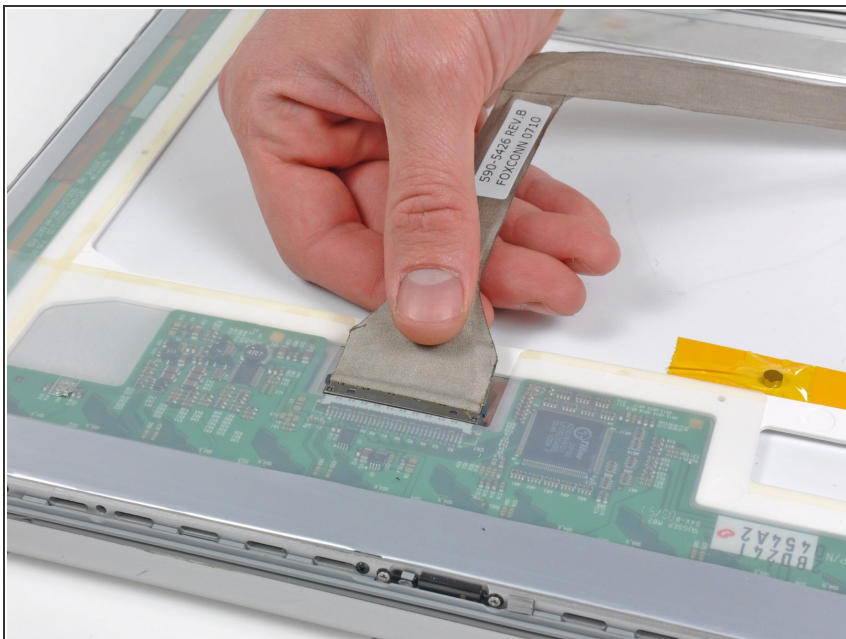
- Use your fingers to pull the backlight connector away from its socket on the inverter board.
- Remove the display inverter from the display assembly.

Step 11 — LCD



- ⓘ If present, remove the piece of tape covering the display data cable.

Step 12



- Pull the display data cable straight away from its socket on the LCD.

Step 13



- Remove the four 3.2 mm Phillips screws securing the left side of the LCD assembly to the front display bezel.

Step 14



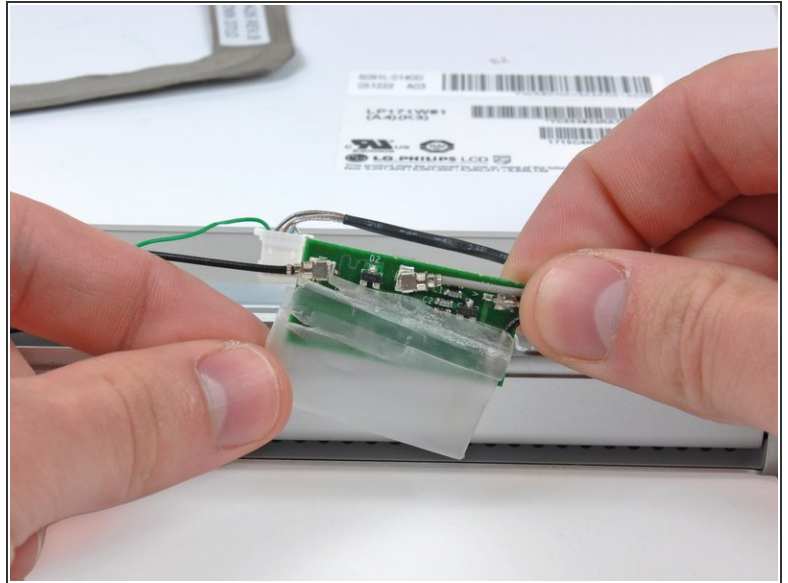
- Remove the four 3.2 mm Phillips screws from the top portion of the LCD assembly.

Step 15



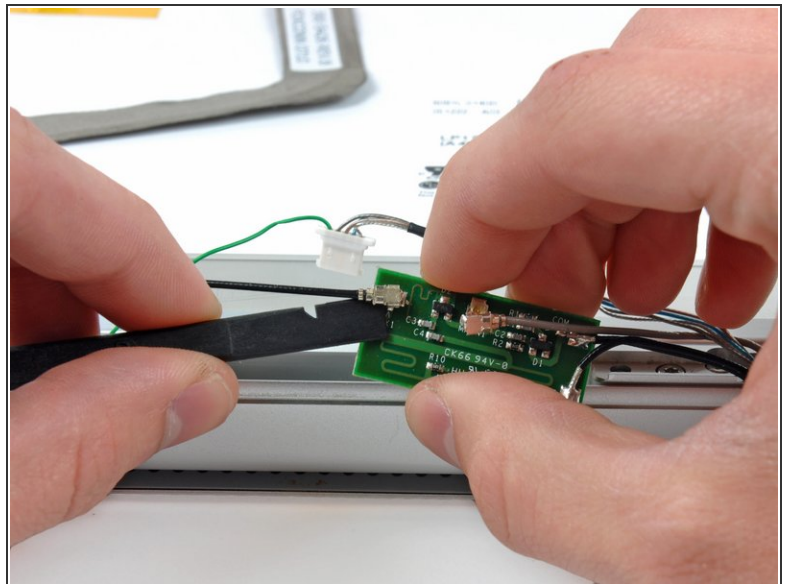
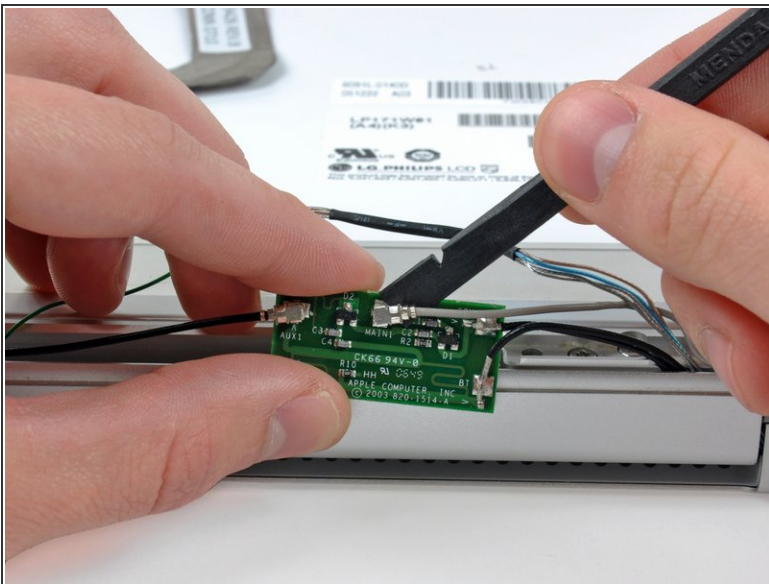
- Remove the four 3.2 mm Phillips screws along the right side of the display.

Step 16



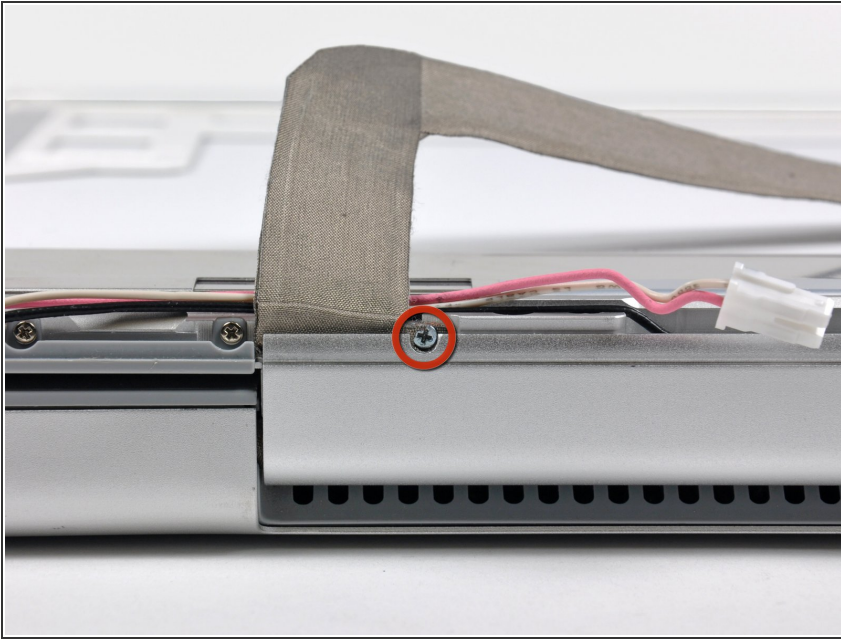
- Carefully peel the protective translucent shield off the antenna board.
- ☞ If you damage this during disassembly, be sure to tape over any tears or cracks to avoid unintended shorting.

Step 17



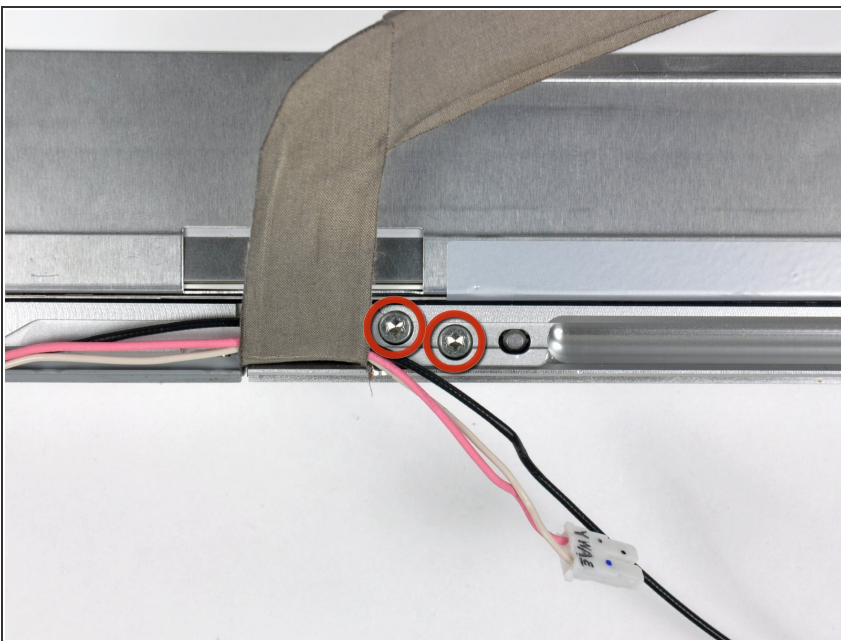
- Use the flat end of a spudger to pry the the antenna cables straight up off their sockets.

Step 18



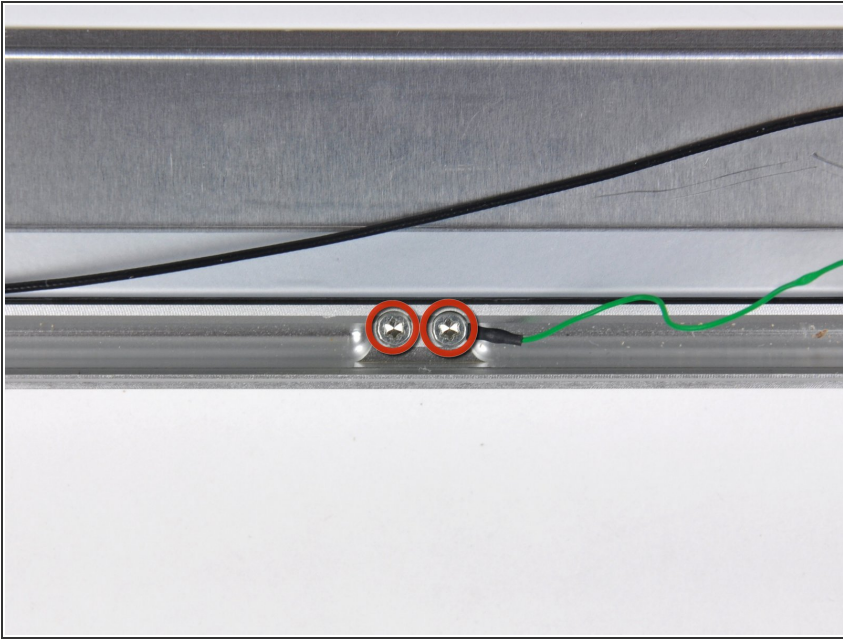
- Remove the single 2.5 mm Phillips screw securing the display data cable ground loop to the front display bezel.

Step 19



- Remove the two 10.3 mm T8 Torx screws securing the left side of the clutch hinges to the front bezel.

Step 20



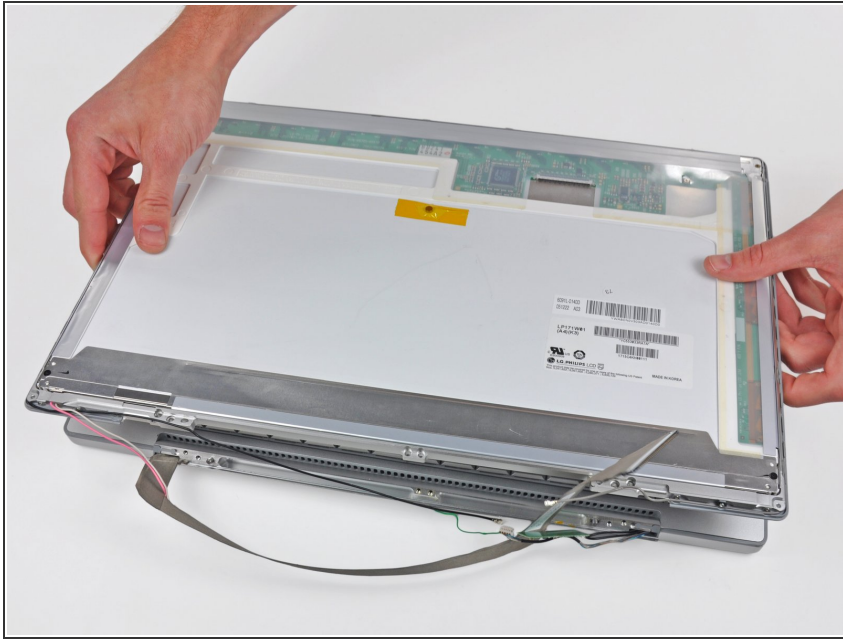
- Remove the two 10.3 mm T8 Torx screws securing the center of the clutch hinges to the front bezel.

Step 21



- Remove the two 10.3 mm T8 Torx screws securing the right side of the clutch hinges to the front display bezel.

Step 22



- Press the display release button to release the top edge of the display from the upper case.
- Carefully wiggle and lift the display assembly straight up off its positioning pins on the clutch hinges.

Step 23



- ⚠ In the following steps, you will use a heat gun to soften the adhesive securing the metal LCD frame to the front display bezel. Heat guns have the capability of producing an extremely hot jet of air, so be sure not to overheat the LCD panel.
- With the heat gun set to low, start by heating the front display bezel near the upper left corner of the display panel.

Step 24



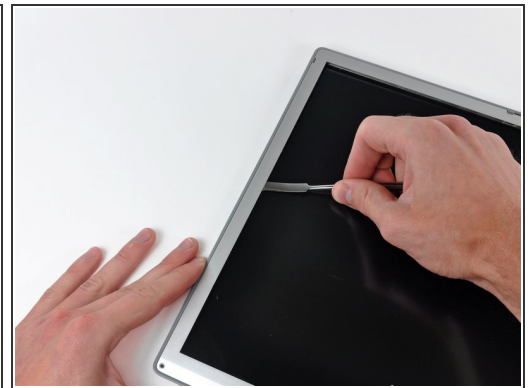
- Insert a plastic opening tool between the metal LCD frame and the front bezel.
- ⚠ Be sure you are prying between the metal LCD frame and the front bezel, **not** between the metal LCD frame and the LCD.
- ⓘ It may be necessary to reheat this area until the adhesive yields enough to insert the edge of a tool.
- Use the flat end of a metal spudger to gently pry up the adhesive securing the metal LCD frame to the front bezel, taking special care not to scratch the LCD panel.

Step 25



- While it is still inserted between the metal LCD frame and the front bezel, run the edge of your metal spudger along the top edge of the display to separate the adhesive securing the two pieces together, heating the area you are working on with a heat gun as necessary.
- ⓘ If the adhesive is hard to separate, use a heat gun to lightly heat the area you are working on.

Step 26



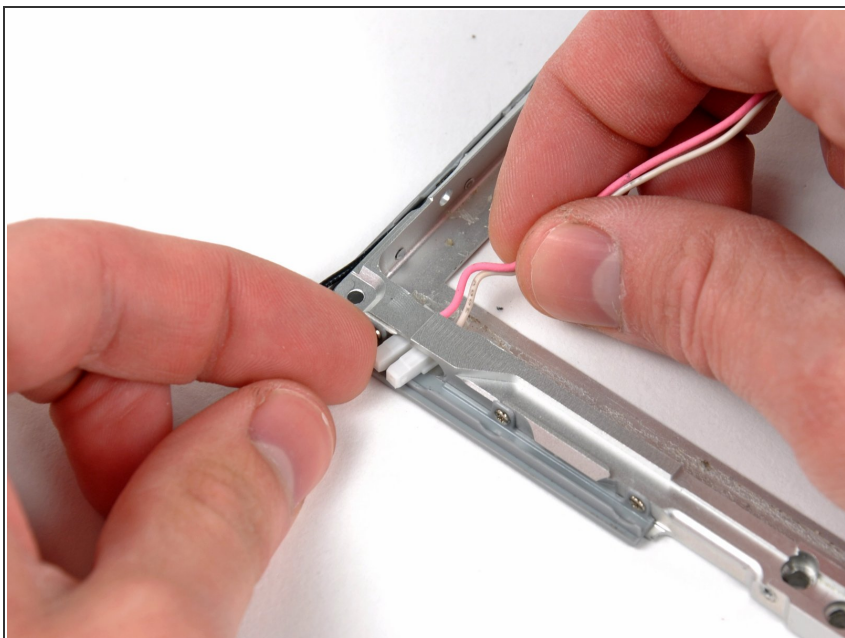
- Continue running the edge of your metal spudger between the LCD frame and the front bezel until the right, bottom, and left sides of the LCD are free.

Step 27



- ⚠ Lift the LCD by its top edge **only**. Lifting the LCD by its lower edge will damage the backlight cables.
- Lift the LCD out of the front display bezel, using your metal spudger to release any adhesive if necessary.

Step 28



- With the LCD partially removed from the front bezel, carefully push the backlight connector through its tunnel in the front bezel.

To reassemble your device, follow these instructions in reverse order.