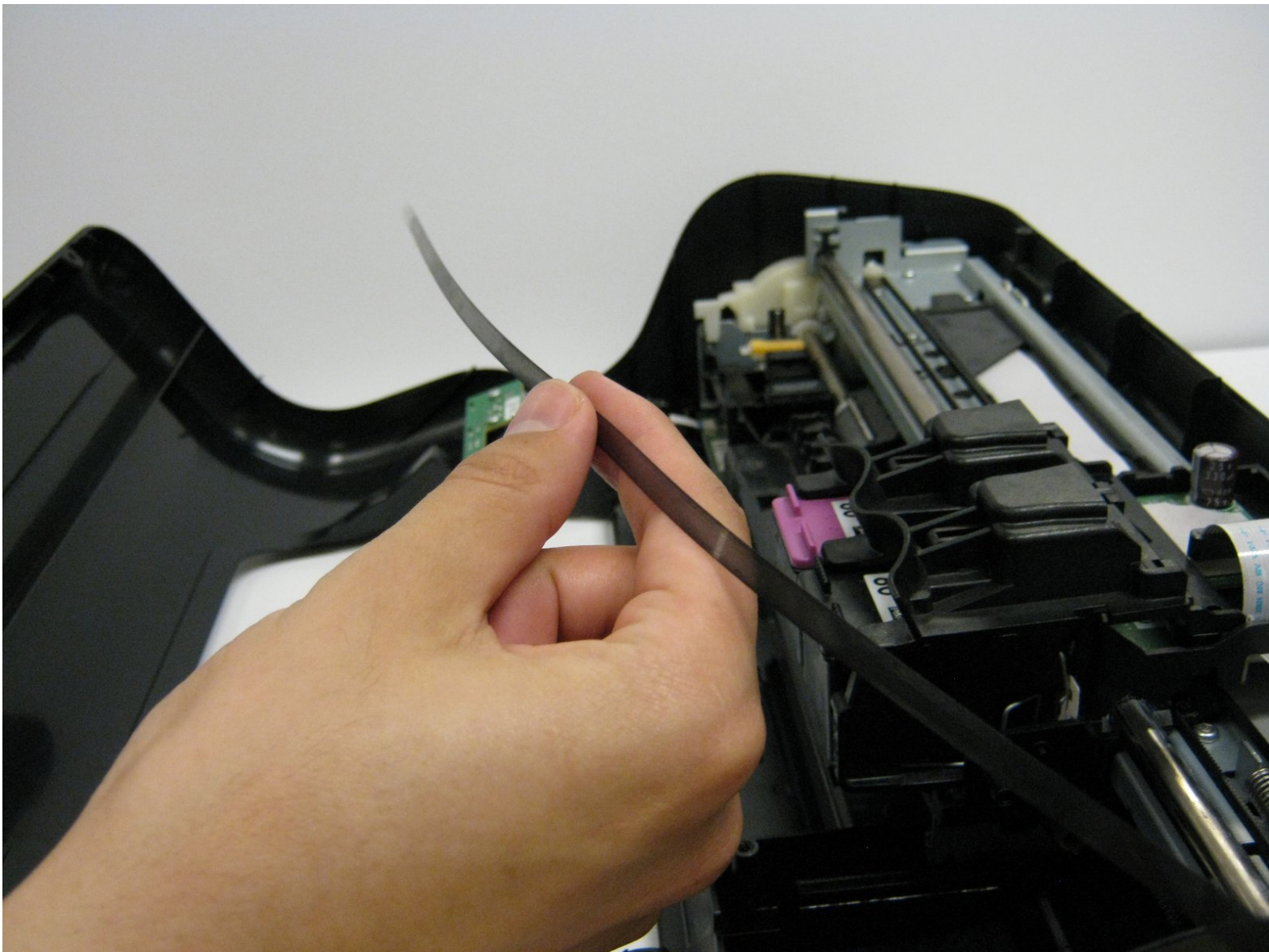




# HP Deskjet D1660 Encoder Strip Replacement

Replace the encoder strip so the carriage doesn't slam to one side.

Written By: Justin Taiki Fukada



## INTRODUCTION

This guide will replace the encoder strip, which the printer carriage uses to read its speed and position. It runs through the opening of the carriage and is attached to each end of the frame inside the printer. Without this strip, the carriage will slam against the side of the printer when it is turned on.



### TOOLS:

- [T10 Torx Screwdriver](#) (1)
-

## Step 1 — Encoder Strip



- Remove the back two 14.0 mm Torx #10 screws.

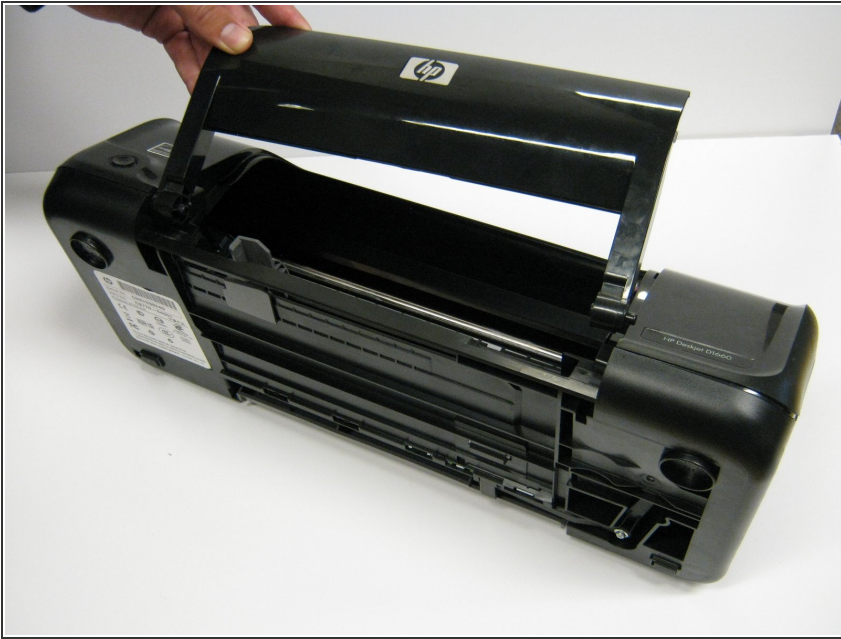
## Step 2



- Lay the printer on its back.
- Grab the paper tray by its right side and pull it to the left and up.

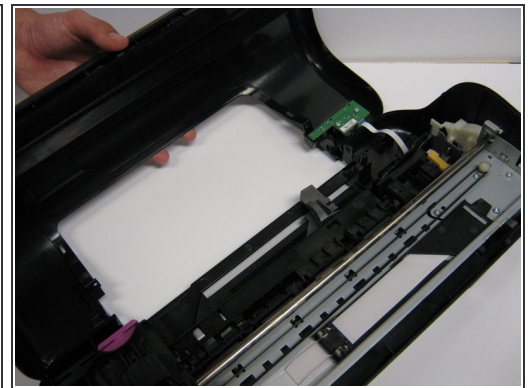
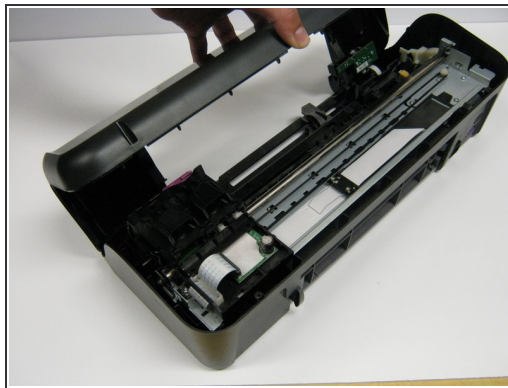
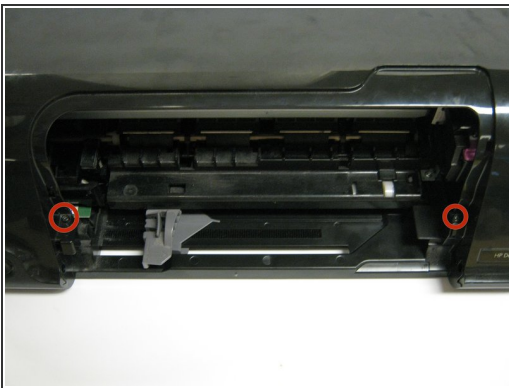


### Step 3



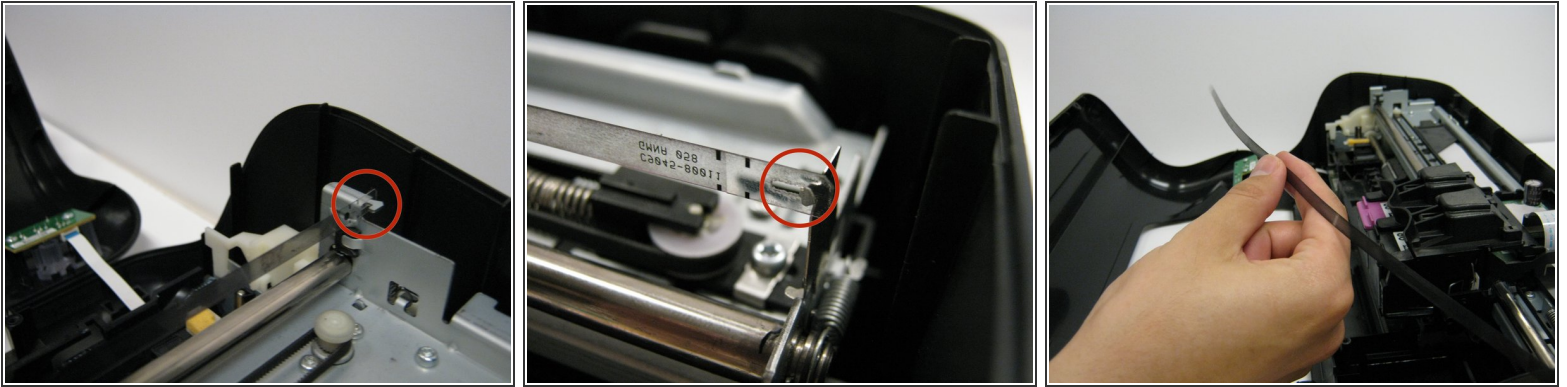
- Open the frontal access panel by lifting it from the top.
- Similar to the paper tray, grab it from the right side and pull it to the left and up.

### Step 4



- Take out the two frontal 14.0 mm Torx #10 screws.
  - Carefully lift the frontal cover.
- ⚠ Don't lift it up aggressively. A strip will be attached to it.

## Step 5



- Looking at the printer from the front, carefully unhook the encoder strip from the left side.
- ⓘ Pull the strip to the left and push a little to unhook the strip.
- Do the same thing on the other side by pulling to the right and pushing a little.
- Pull the strip completely out from the cartridge holder.

To reassemble your device, follow these instructions in reverse order.