



Mitsubishi T200 Keyboard Replacement

How to replace the rubber keyboard on a T200 phone.

Written By: Katherine



INTRODUCTION

This short, simple guide will help you replace the rubber keyboard buttons on a Mitsubishi T200 cellphone.



TOOLS:

- [Small Phillips Head Screwdriver](#) (1)
- [small flat head screwdriver](#) (1)



PARTS:

- [New Rubber Button Keypad for Mitsubishi T200](#) (1)

Step 1 — Keyboard



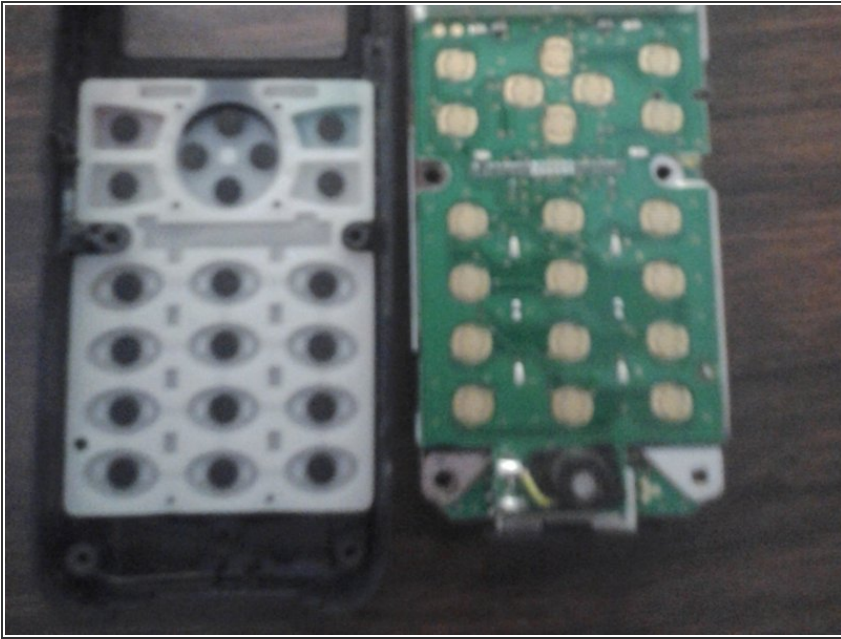
- Begin disassembling the phone by removing the back of the phone and the battery.

Step 2



- Remove the back plate by removing the 4 screws in the back plate using an appropriately sized Philips screwdriver

Step 3



- Pry the front plastic component from the “motherboard” component.

Step 4



- Take out the old rubber keypad and replace with a new one.

Step 5



- Reassemble by following previous steps in reverse order.

To reassemble your device, follow these instructions in reverse order.