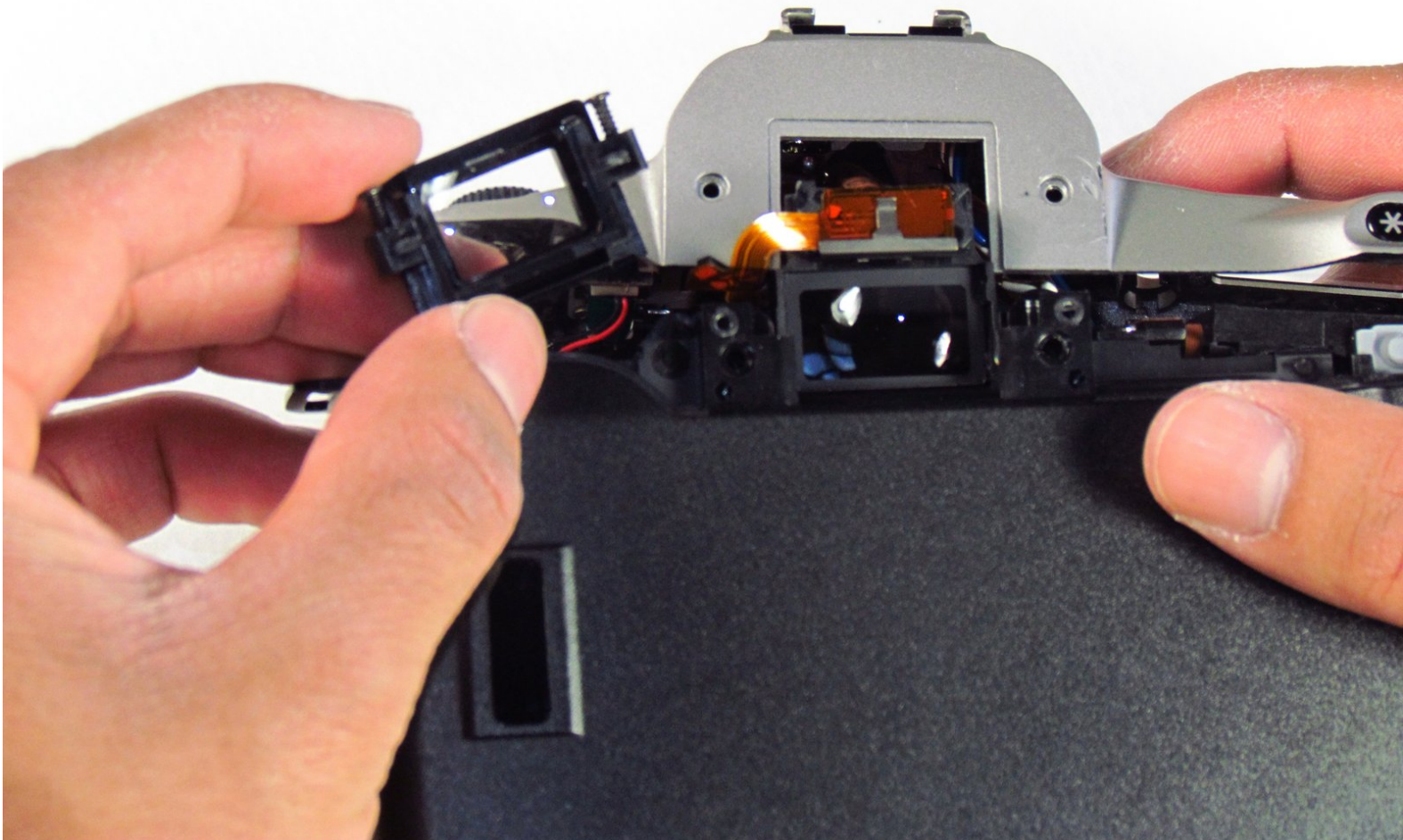




Canon EOS 300 Eyepiece Replacement

This guide will shows how to remove and replace the eye piece.

Written By: Tammy Kong



INTRODUCTION

The eye piece will be easily accessible to replace after removing the top panel of the camera.



TOOLS:

- [Phillips #00 Screwdriver](#) (1)
 - [Spudger](#) (1)
-

Step 1 — Batteries



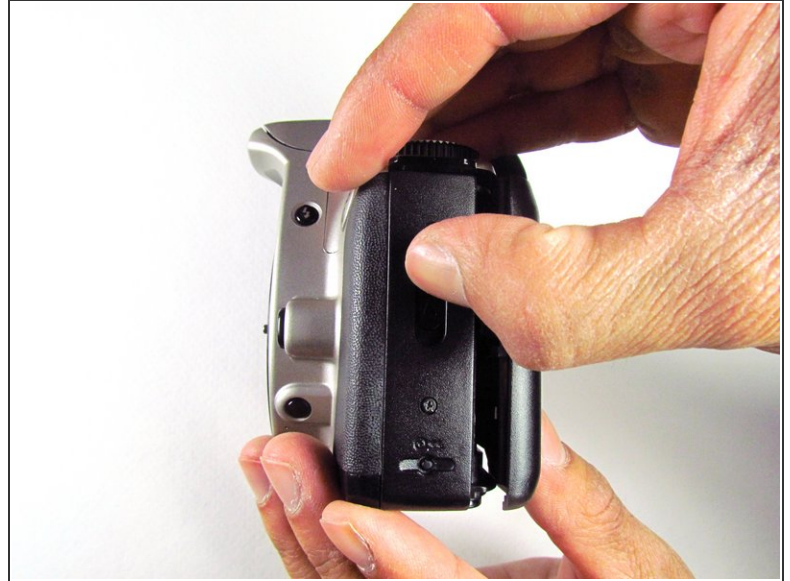
- Open up the battery door.

Step 2



- Remove the batteries from the camera by sliding them out into your palm.

Step 3 — Side Panel with Lever



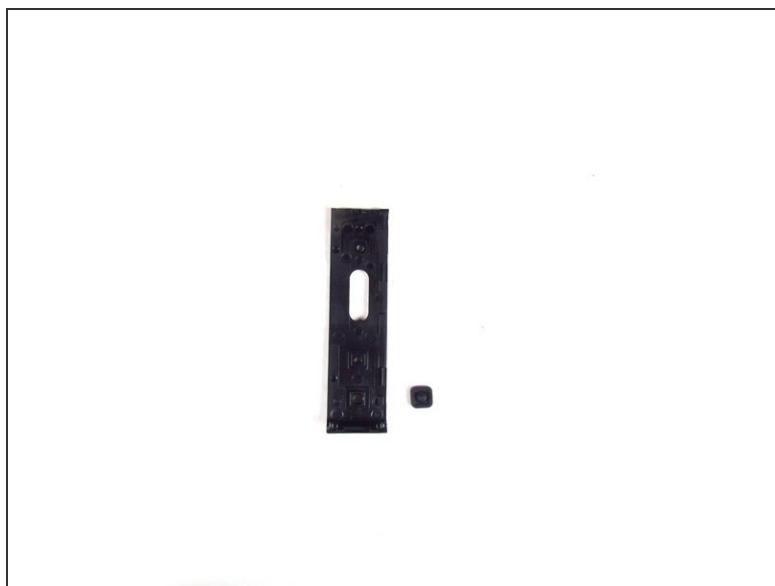
- Release the side latch to open the back panel.

Step 4



- Remove the two black 4.5mm screws above and below the latch.

Step 5



- Using your finger, carefully pry open the side panel from the top of camera.
- Pull panel downwards to remove.
- ⓘ Make sure to keep track of the small black piece of rubber under the latch.

Step 6 — Front Panel



- Remove the two silver 6mm Phillips #1 screws.

Step 7



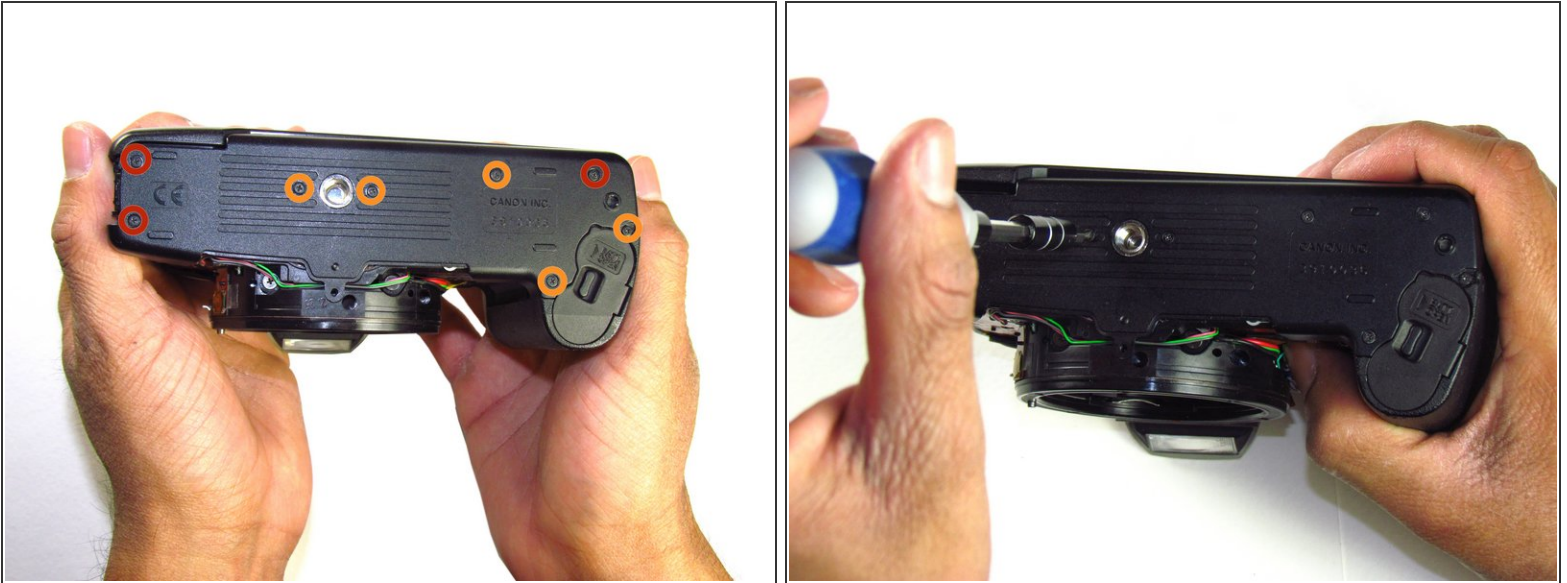
- Flip camera over to the bottom.
- Remove the one 5mm Phillips #1 silver screw.

Step 8



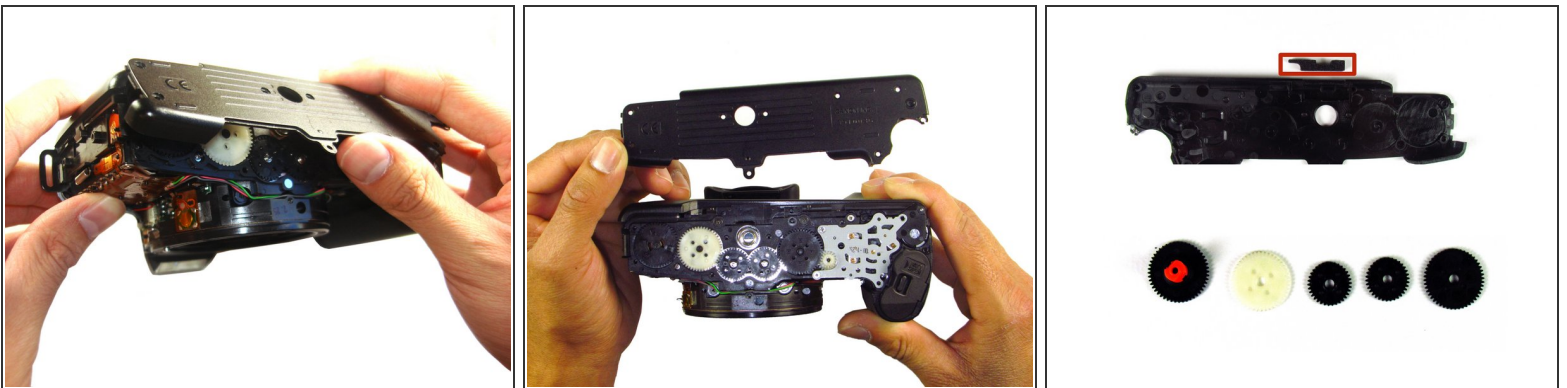
- Remove the front panel by pulling away from the side with the lever.

Step 9 — Bottom Panel



- Remove three black 7.3mm Phillips #1 screws located on the corners of the camera.
- Remove five black 4.8mm Phillips #1 screws.

Step 10



- Simply remove the bottom panel by prying it off with your finger.
- ⚠ When removing the panel, be sure the bottom of the camera is facing upright. There are loose gears that may fall out.
- Be wary of a loose piece of foam attached to the bottom panel.

Step 11 — Side Panel with Grip



- Remove the remote control socket cover.

Step 12



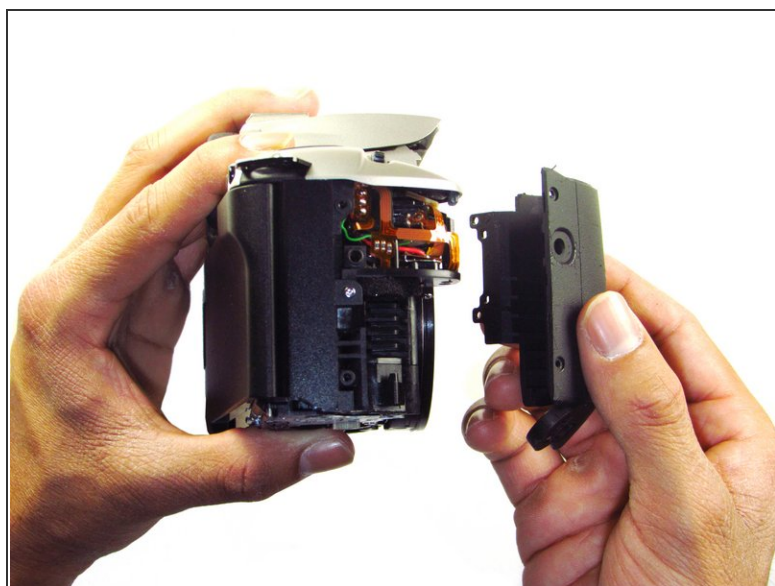
- Remove two black 4.5mm Phillips #1 screws.

Step 13



- Remove two black 4.8mm Phillips #1 screws on the front of the camera.

Step 14



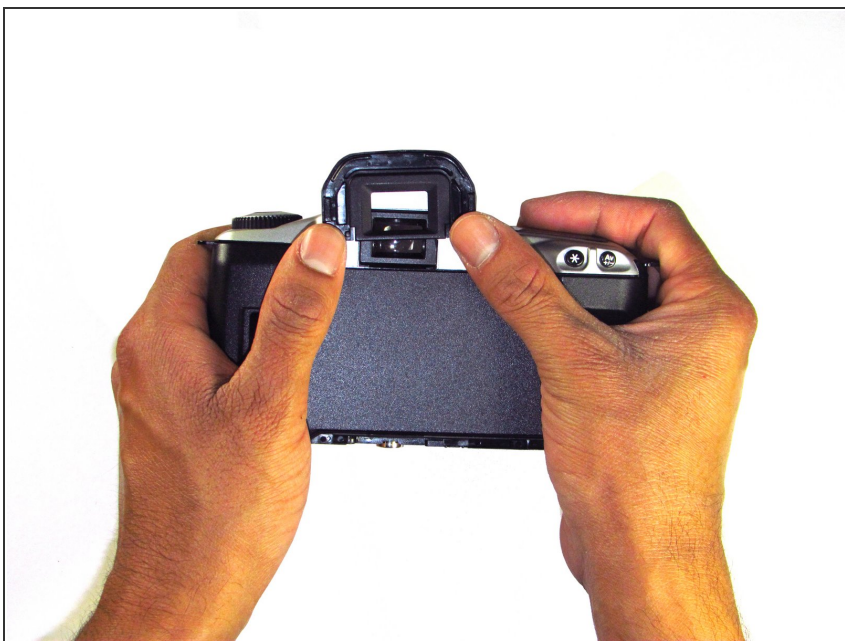
- Pry open the side grip using a spudger.

Step 15 — Eyecup



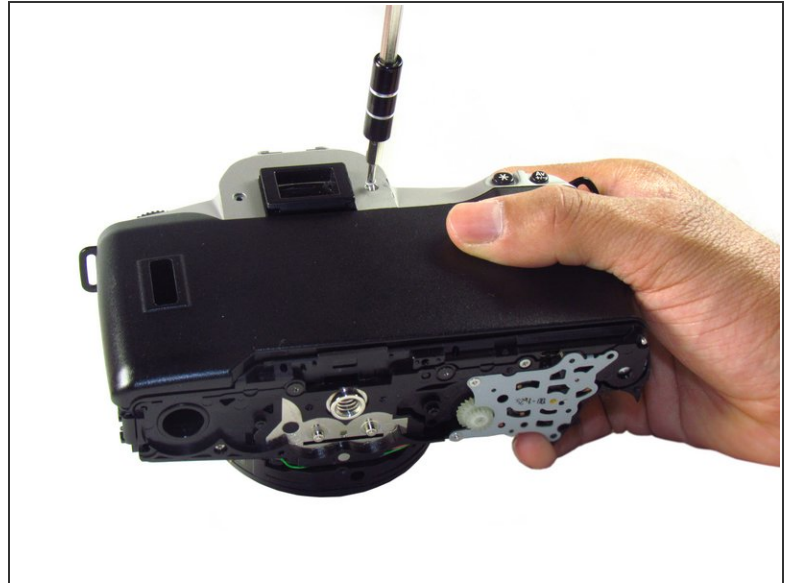
- With your hands, remove the rubber grip from the eye piece.

Step 16



- Remove the eyecup from the eyepiece by pushing the eyecup up.

Step 17 — Top Panel



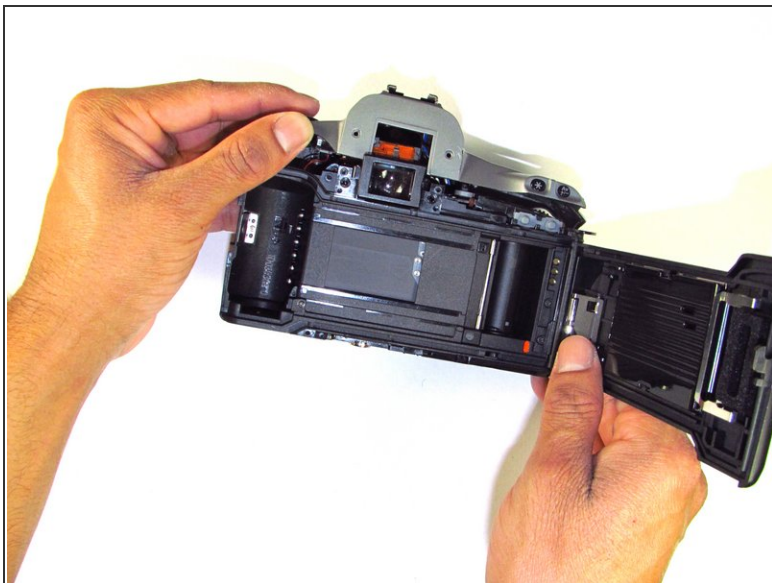
- Remove two silver 5.0mm Phillips #1 screws.

Step 18



- Remove the silver 5.5mm Phillips #1 screw.

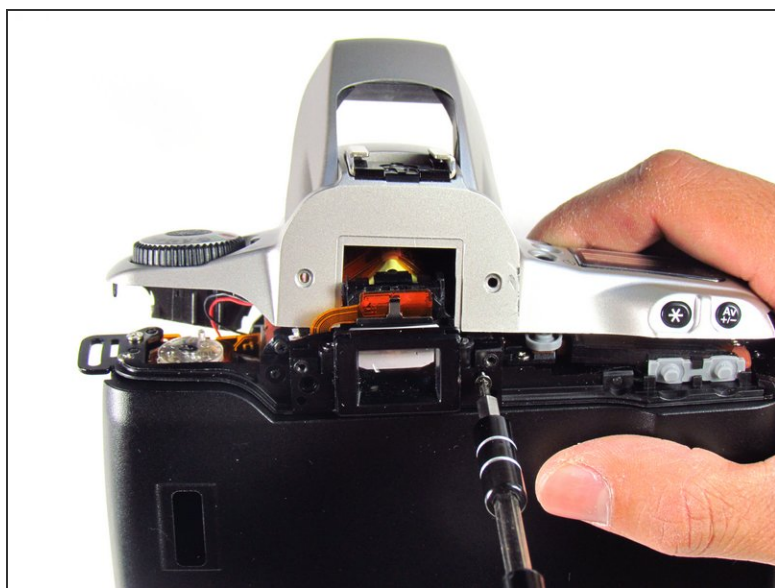
Step 19



- Pry the top silver part of the camera off.

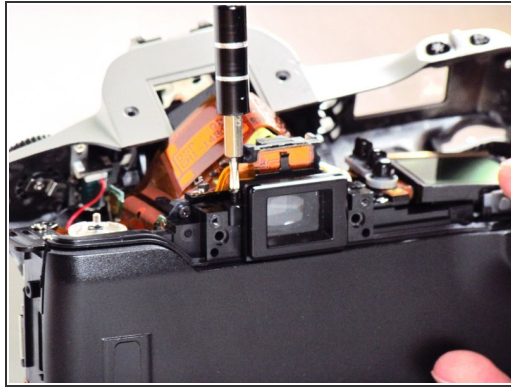
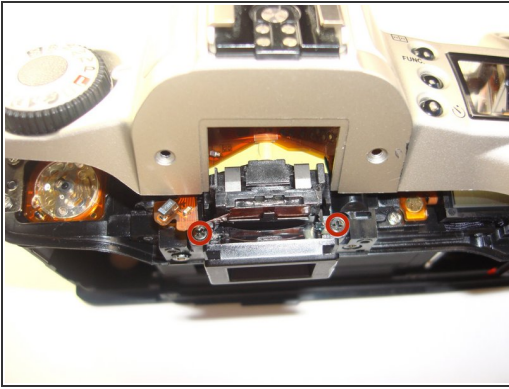
⚠ Buttons may slip out of the camera's top as the top is pulled off the camera (shown in picture two).

Step 20 — Eyepiece



- Remove the two black 9.5mm screws.

Step 21



- Remove two black 8.8mm Phillips #1 screws with a screw driver.

- ⓘ Remove the right screw first (the one without the tape).

To reassemble your device, follow these instructions in reverse order.