



iRobot Roomba 551 Faceplate Replacement

Replace the faceplate on your Roomba.

Written By: Aaron Jacobs



INTRODUCTION

This guide explains how to remove the faceplate from your Roomba.



TOOLS:

- [Phillips #1 Screwdriver](#) (1)
 - [Phillips #2 Screwdriver](#) (1)
-

Step 1 — Side Brush



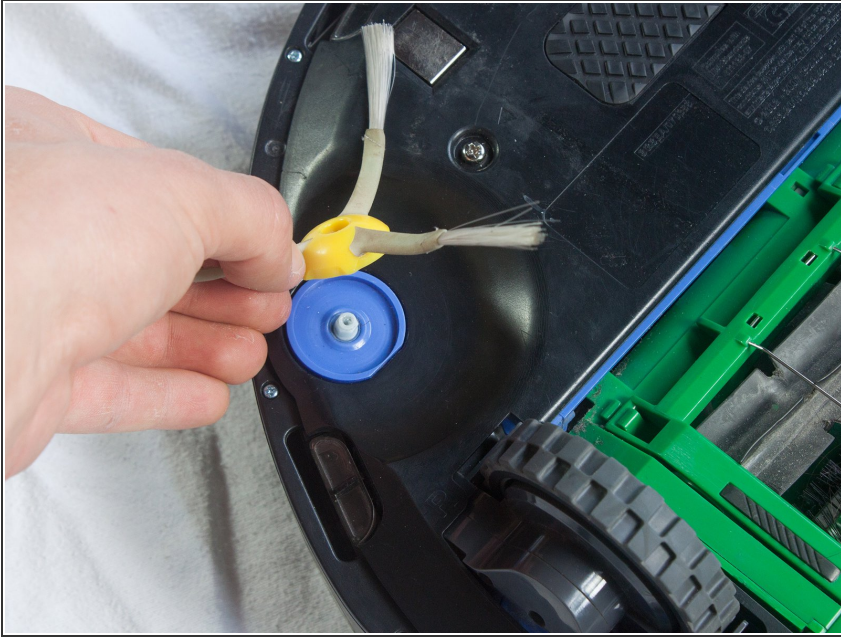
- Place your Roomba upside-down on a hard surface.

Step 2



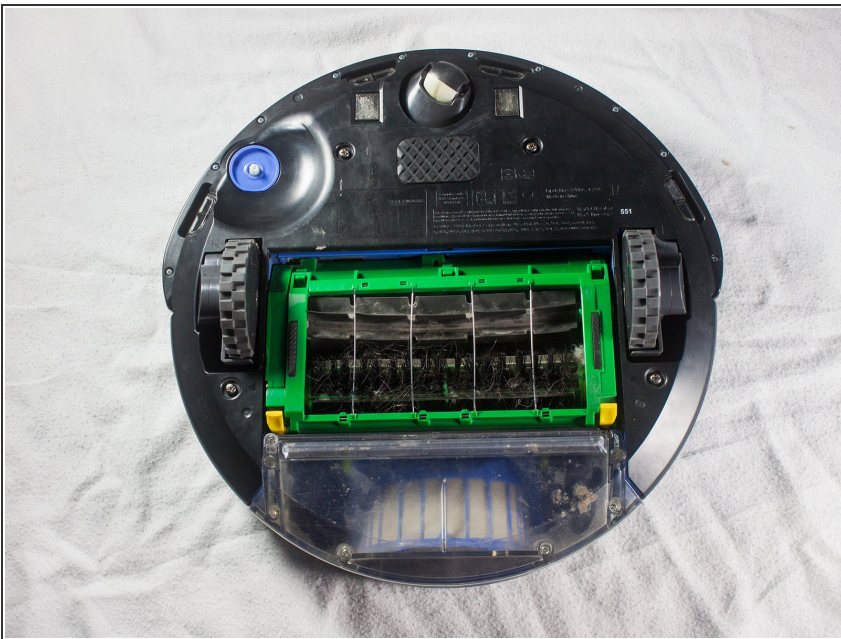
- While holding the side brush in place, use a Phillips #1 screwdriver to remove the 4.5mm screw from the center of the brush.

Step 3



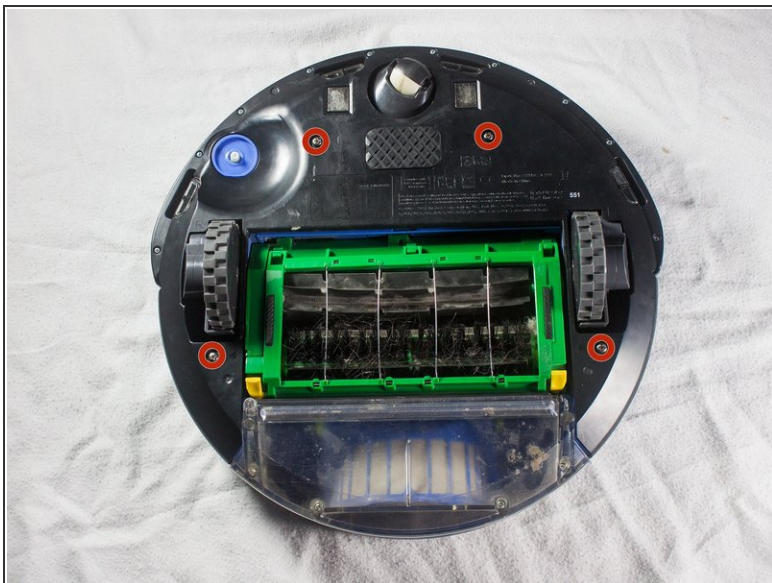
- Gently pull upwards on the brush to remove it.

Step 4 — Bottom Plate



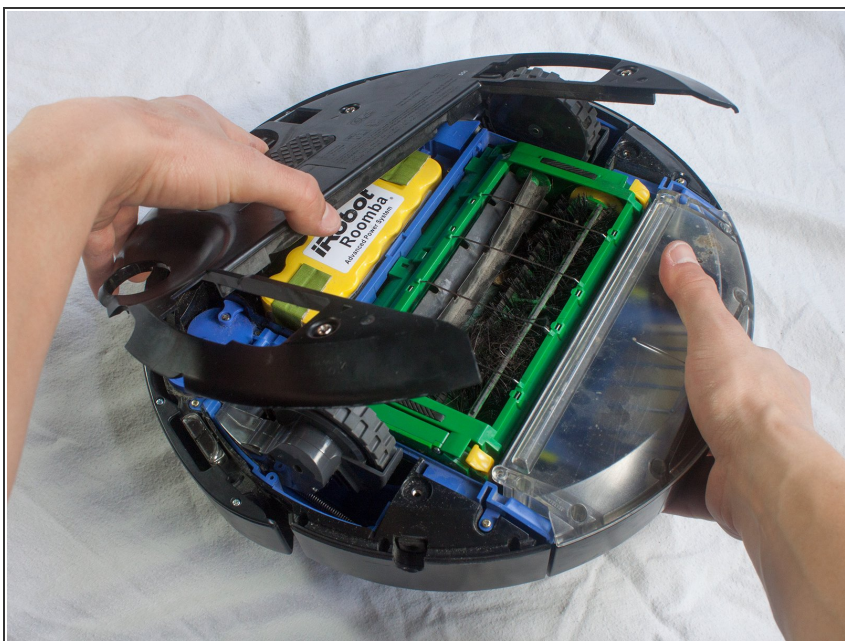
- Rotate the Roomba upside-down so the bottom is facing towards you.

Step 5



- Using a Phillips #2 screwdriver, remove the captive screws that hold the bottom plate in place.

Step 6



- Carefully lift the bottom plate.

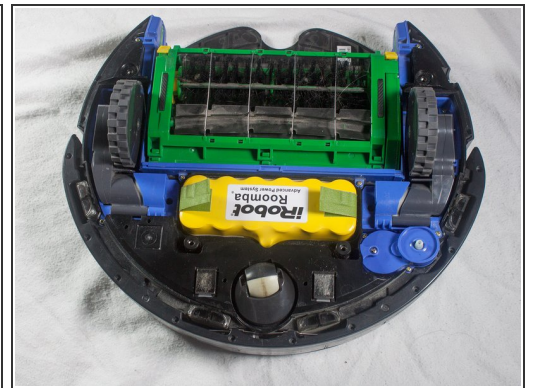
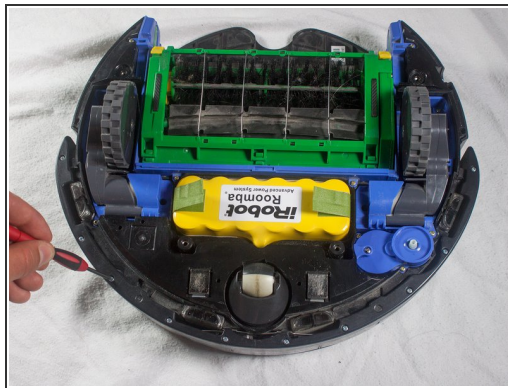
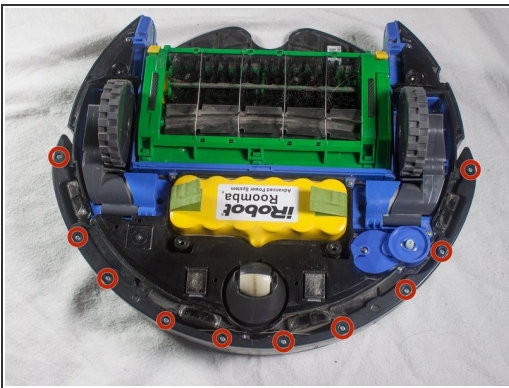
⚠ The battery is only secured in place by the bottom plate, and may fall out once the bottom plate is removed.

Step 7 — iRobot Roomba 551 Dirt Bin Replacement



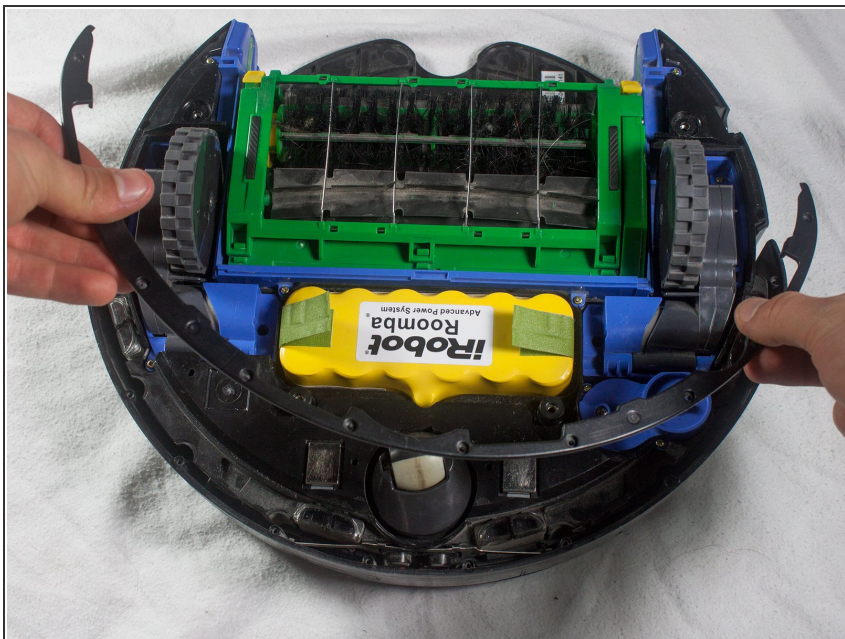
- Push on the dirt bin release button, and pull gently.

Step 8 — Bumper



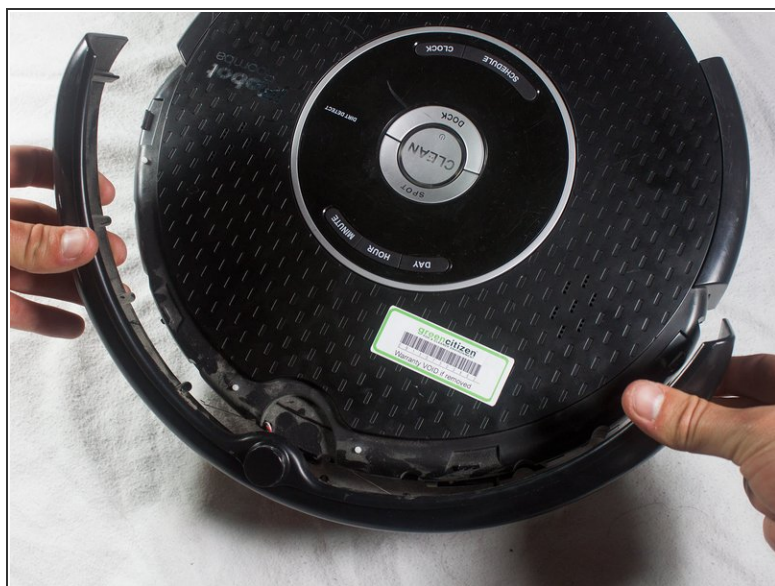
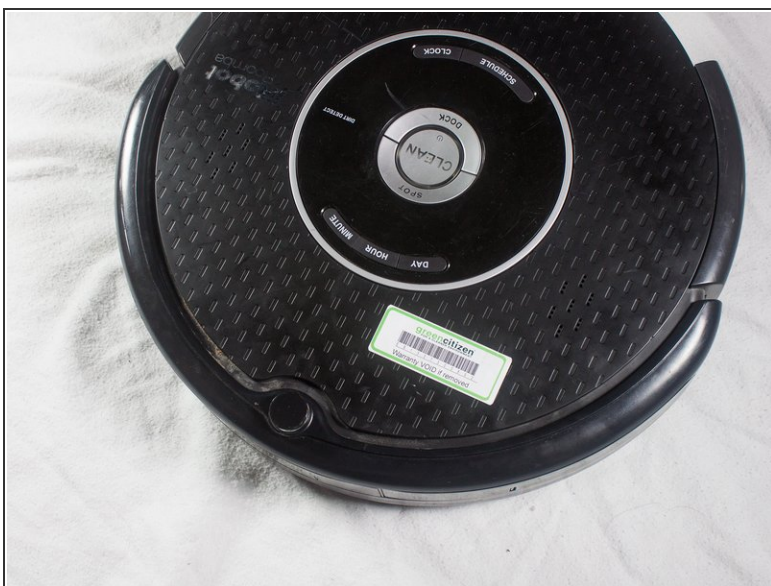
- With a Phillips #1 screwdriver, remove the ten 12mm screws located along the bottom of the bumper.

Step 9




- Lift the bottom cover and set it to the side.

Step 10



- Flip the Roomba over, grasp the bumper, and gently lift to remove.

 The battery is not secured in place once the bottom plate has been removed, and may fall out when the Roomba is turned right-side up.

Step 11 — Faceplate



- Pull up on the front of the faceplate until the friction locks pop out of place.

Step 12



- Continue around the outside of the Roomba, pulling up on the faceplate to free all of the outer friction locks.

Step 13



- Grab the faceplate by the outer edge and pull upwards, freeing the center friction locks in the process.

To reassemble your device, follow these instructions in reverse order.