



# Disassembling Xbox 360 E Top Body

You will need to remove the top body of your...

Written By: Sarah



## INTRODUCTION

You will need to remove the top body of your Xbox 360 E in order to get inside your Xbox and replace other parts, such as the CD drive or motherboard.



### TOOLS:

- [Spudger](#) (1)



### PARTS:

- [Xbox 360 E Top Body](#) (1)

## Step 1 — Top Panel



- Push the [Spudger](#) into the crevice between the grated top panel of the Xbox and the bottom body with the rubber feet.
- Pull back on the spudger like a lever, keeping it pressed firmly into the crevice.

## Step 2



- Slide the spudger along the separation you have created between the grated panel and the bottom body of the Xbox.
- Periodically pull back on the spudger like a lever, keeping it pressed firmly into the crevice.

### Step 3



- Continue sliding the spudger along the perimeter of the left grated face of the Xbox.
- Pull the top panel off.

### Step 4 — Wi-Fi Card



- Remove the 11 mm screw left of the green wifi-card using the T9 Torx screw bit.

## Step 5



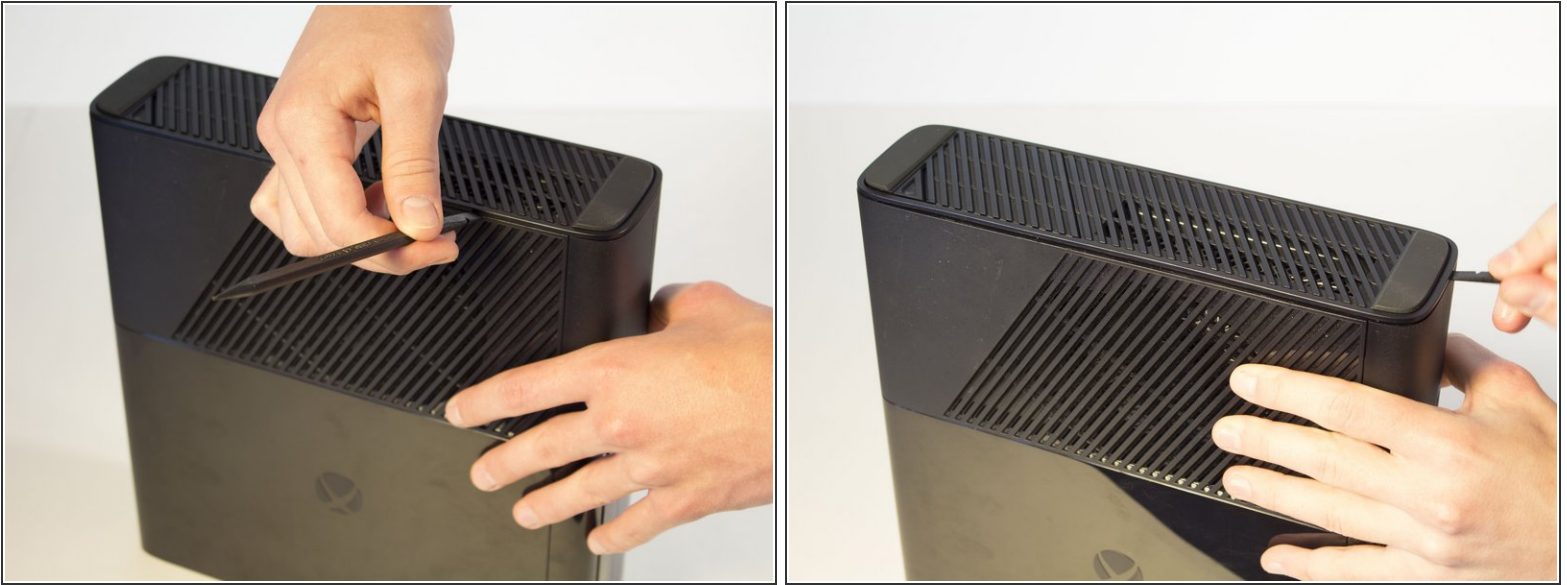
- Firmly grip the green Wi-Fi card and pull it out of the Xbox.

## Step 6 — Bottom Panel



- Push the spudger into the crevice between the right grated face and the top body of the Xbox. It's easier to begin away from the vent.
- Pull up on the spudger like a lever, keeping it pressed firmly into the crevice.

## Step 7



- Slide the spudger along the crevice to separate the grated face and the top body.

## Step 8



- Wiggle the spudger in the crevice as you slide the spudger to loosen the bottom plate.
- Slide the spudger along the crevice, going completely about the perimeter of the bottom panel.
- Pull the bottom panel off.

## Step 9 — Front Panel



- In front of the CD drive you will find the Xbox logo. Press on the area left of the Xbox logo, and the disk tray panel will pop off.

## Step 10



- Beginning on the left side without the grate, run the spudger along the crevice until you've reached the grated part, while holding the part that's being separated as you go.

## Step 11



- Keep holding the partially separated panel open. It's easiest to do this by wedging a spudger into the opening but can also be held open by your hands.
- Rotate the Xbox to the left to locate the clip connecting the front panel to the body. Insert the spudger inside the gap to release the clip. This may require wiggling the spudger. The clip will pop off, making the front panel looser.

## Step 12



- Flip the Xbox so the opposite side is towards you. Make sure to keep the separation open.
- Locate the other clip and insert the spudger to remove it.

## Step 13



- Continue to run the spudger along the crease to release any further clips that may still be attached.

**⚠ Do not pull off the panel too fast because you don't want to damage the ribbon cable. Slowly pull away the panel.**

- Now that the front panel has been released from its clips you can pull off the front panel.

## Step 14



- Find the brown section where the ribbon cable enters the green board. Flip the brown part up and pull out the plastic tab at the end of the ribbon.

## Step 15 — Bottom Body



- Orient the Xbox so the bottom body is facing upwards. Make sure you see the rubber feet to know you have the correct side of the device.
- Lift the bottom body slightly away from the core at a 45 degree angle.

## Step 16



- Rotate the Xbox so you are now looking at the back of the device.

**⚠ This step of disassembly requires the removal of the warranty sticker. This will void your warranty. Check the main page for a link to warranty information from Microsoft.**

- Remove the sticker from the back of the Xbox.

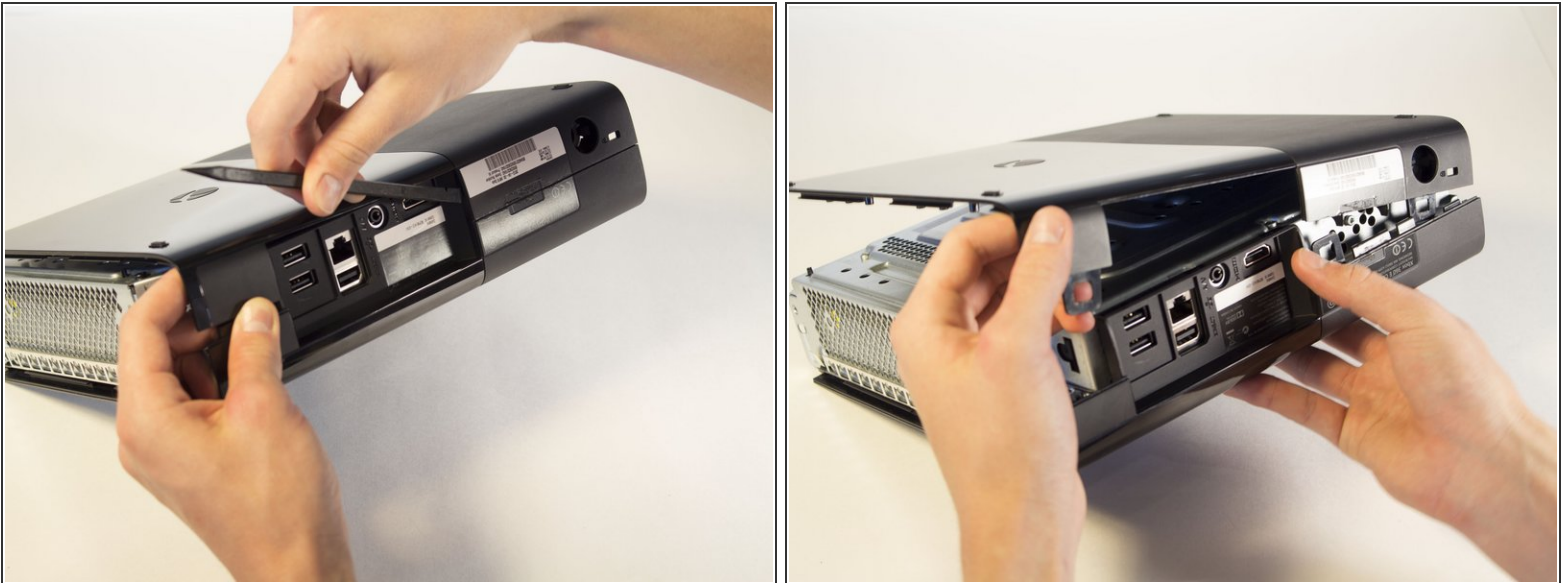
**i** *The sticker is not needed for reassembly.*

## Step 17



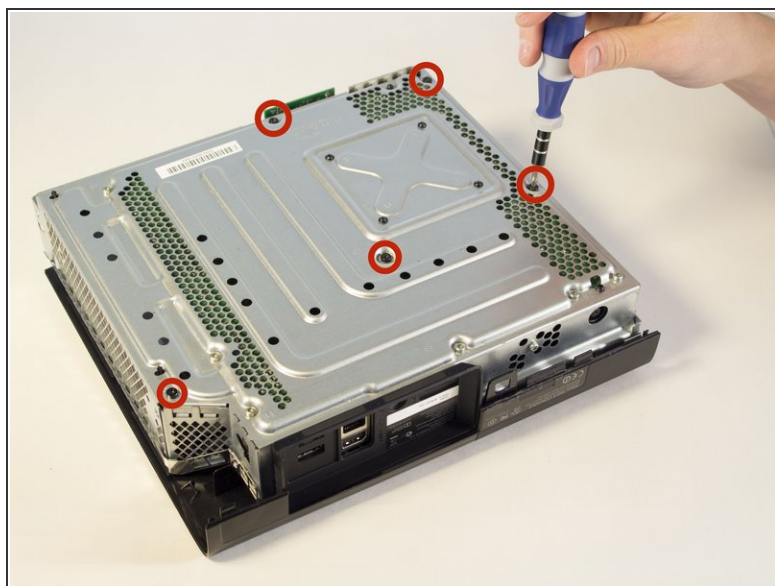
- Turn the Xbox to the left to locate the clip holding the body together.
- With a spudger, press up on the clip like a latch. Move to the far end to undo the other clip the same way.

## Step 18



- Push the spudger into the crevice. Slide the spudger along the vertical crevice to detach the last clip. The bottom body should slide off after this.

## Step 19 — Top Body



- Remove the five long black 55 mm screws labeled C2-5 and C7 with a T9 Torx screwdriver.
- Carefully flip the device and pull off the body by lifting from the metal section that is attached to the plastic exterior.

To reassemble your device, follow these instructions in reverse order.