



Professional Series PS77401 Toaster Solenoid Replacement

We will see how to remove a faulty or damaged solenoid.

Written By: Jacob M Bassetti



INTRODUCTION

The solenoid's job is to cut the power allocated to the heating elements and release the latch, springing the toast upward. Consistently burnt toast no matter what desired setting applied is a good sign that the solenoid needs to be repaired in some way.



TOOLS:

- [T7 Torx Screwdriver](#) (1)
- [10mm Wrench](#) (1)
- [Phillips #2 Screwdriver](#) (1)



PARTS:

- [Solenoid Replacement Knob](#) (1)

Step 1 — Shell



- ★ Make sure that the toaster is unplugged before attempting any sort of disassembly!

Step 2



- Grip the black plastic lever nub firmly and *carefully* remove it from the metal lever. Use one hand to hold the toaster in place while you pull the lever nub with the other.

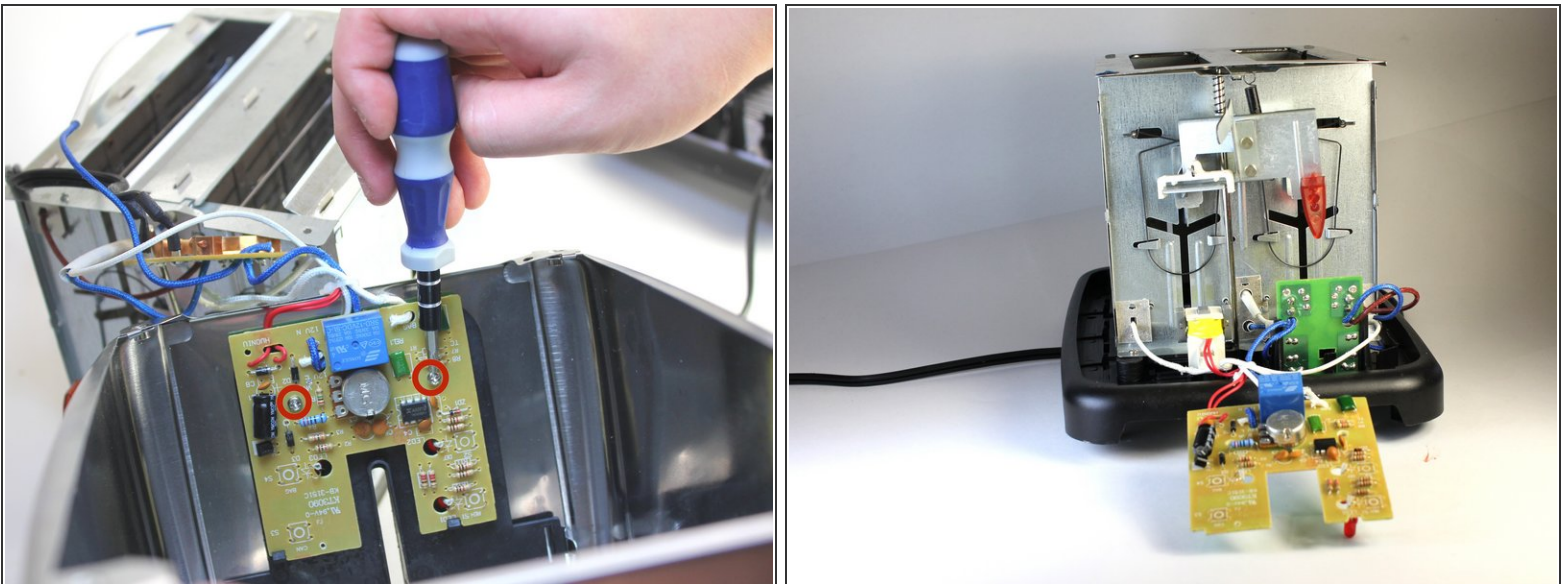
⚠ If this is the first time detaching this piece, it will take some effort to remove. Be careful as pulling too hard can cause damage to the inner lever mechanism.

Step 3



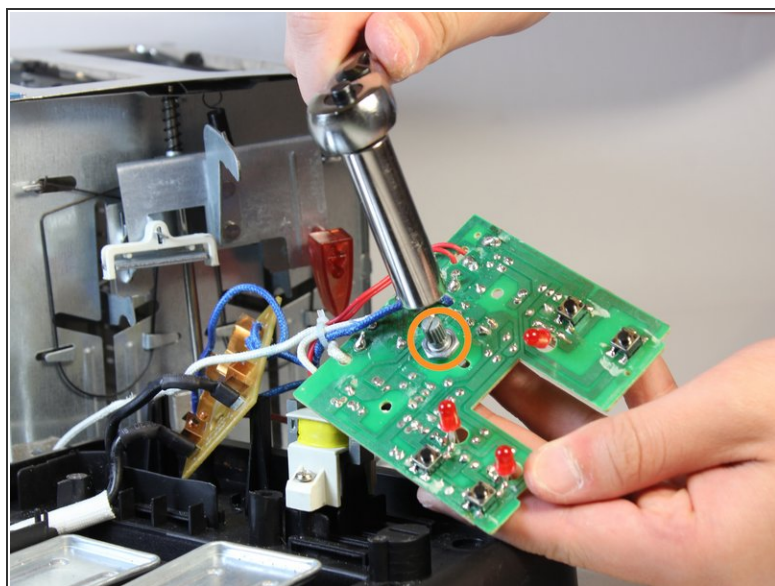
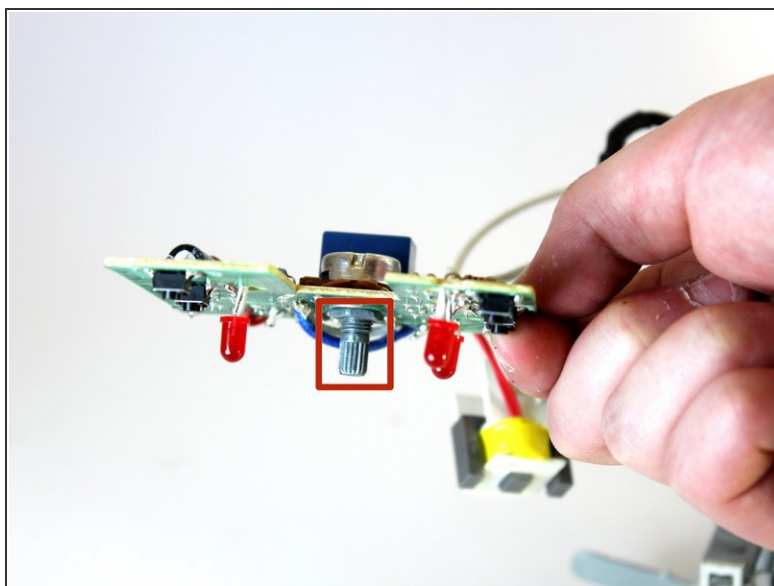
- Flipping the toaster upside down, use a T7 Torx Screwdriver to remove the four 10mm screws that keep the outer shell attached.
 - Flip the toaster back over and slide off the shell making sure to slip the toaster lever (now without the black plastic nub) through the lever opening in the shell.
- i** The outer shell should now only be connected by its internal wiring.

Step 4



- Locate and remove the two 8mm screws that attach the circuit board (located inside of the shell) from the shell itself using the Phillips #2 screwdriver.
- i** The shell should now be completely separated from the rest of the toaster.

Step 5 — Toaster Solenoid



- Locate the metal knob protruding from the removed circuit board.
- Remove the 10mm nut with an equally sized wrench and replace the now removable solenoid.

To reassemble your device, follow these instructions in reverse order.