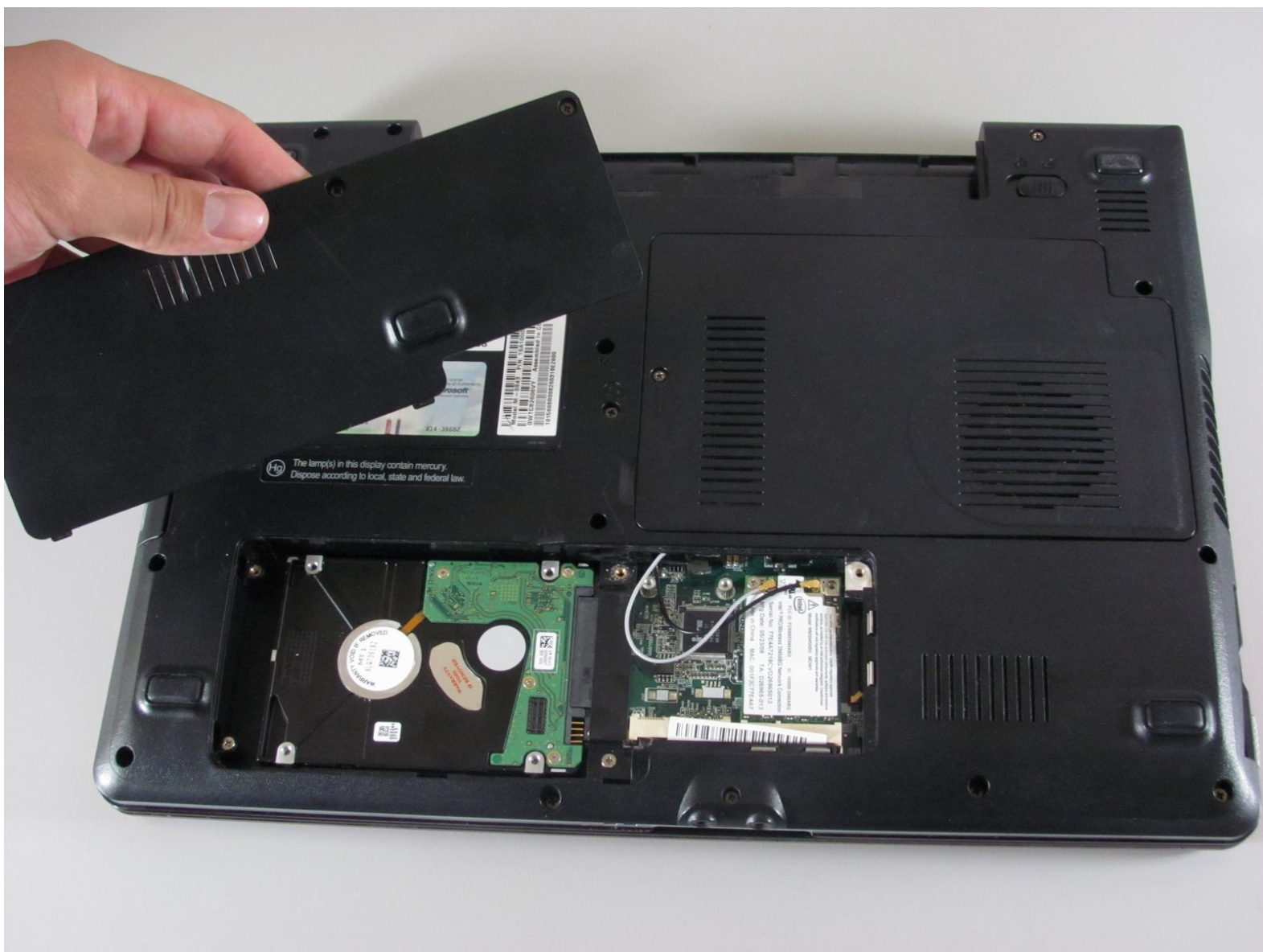




Gateway SA1 Hard Drive Replacement

Upgrading the hard drive capacity by replacing...

Written By: Diego Carteno



INTRODUCTION

Upgrading the hard drive capacity by replacing the original drive.



TOOLS:

- [Phillips #00 Screwdriver](#) (1)
- [Spudger](#) (1)



PARTS:

- [Crucial MX500 1 TB SSD](#) (1)
- [Crucial MX500 250 GB SSD](#) (1)
- [Crucial MX500 500 GB SSD](#) (1)
- [Crucial MX500 2 TB SSD](#) (1)

Step 1 — Battery



- Move the latch to the right of the battery to unlock.

Step 2



- Slide the latch on the left directly below the battery to unlock and pull out the battery as shown.
- ⓘ The latch must be held in position to remove the battery.

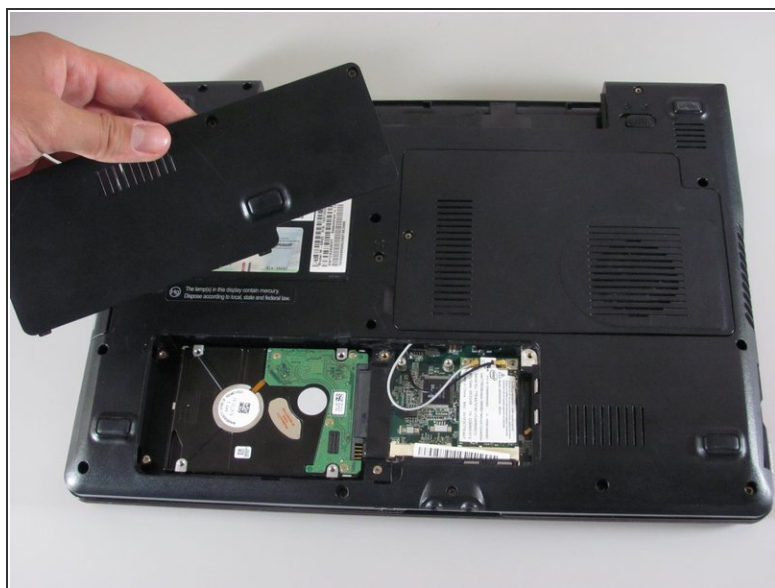
Step 3 — Hard Drive



⚠ Before you begin, it's recommended that you back up all your computer's information on the original hard drive. Also, verify the laptop is off and all cables are disconnected.

- Turn the laptop over so the bottom is facing up.

Step 4



- Loosen the three Philips cover screws that secure the hard drive.
- ⓘ These screws cannot be fully removed from the hard drive cover.
- Use the spudger to lift and to remove the hard drive cover.

Step 5



- Slide the original hard drive to the left and lift it to remove.
- Insert the new hard drive.

To reassemble your device, follow these instructions in reverse order.