



Samsung YP-P3 Buttons Replacement

This guide covers replacing the sensors for the volume buttons and the HOLD/ON buttons on the Samsung YP-P3.

Written By: Andrew Groeneveld





TOOLS:

- [Phillips #000 Screwdriver](#) (1)
 - [Spudger](#) (1)
-

Step 1 — Case Backplate



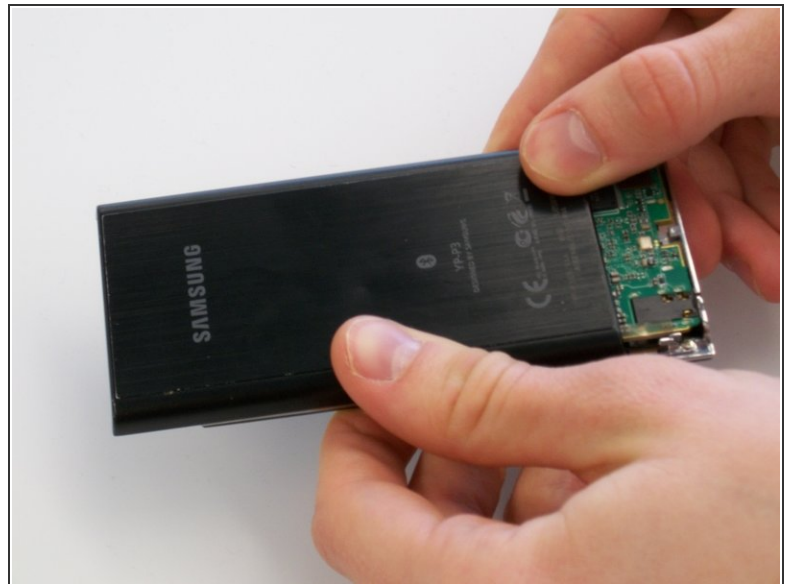
- Pry up the small black piece of plastic located between the volume [-] button and the HOLD/ON button.

Step 2



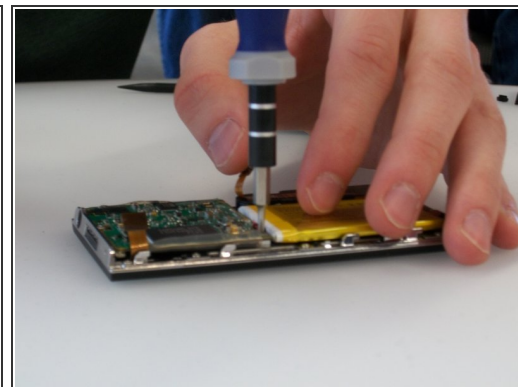
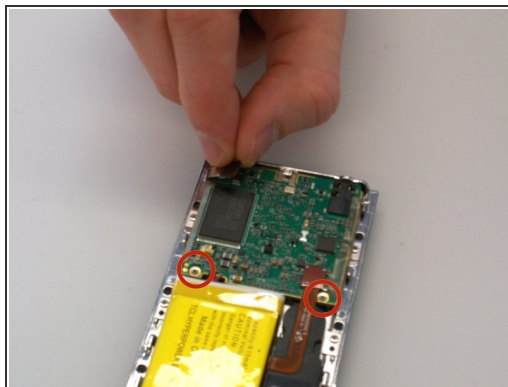
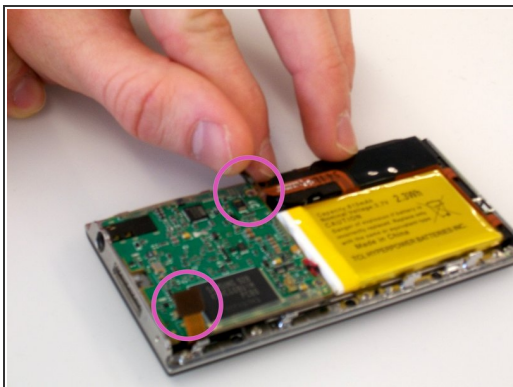
- Underneath the piece of plastic you just removed, there is a small screw (Phillips #000, 2.0 mm long). Use a Phillips #000 screwdriver to remove it.

Step 3



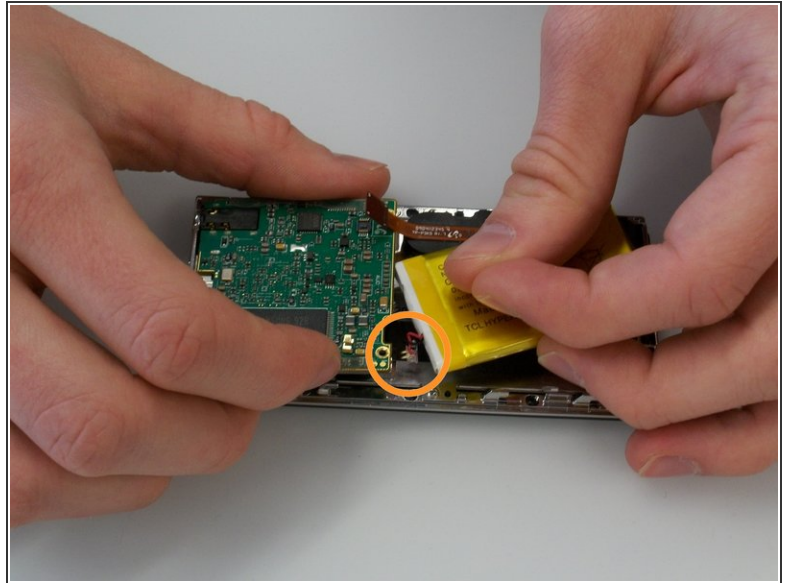
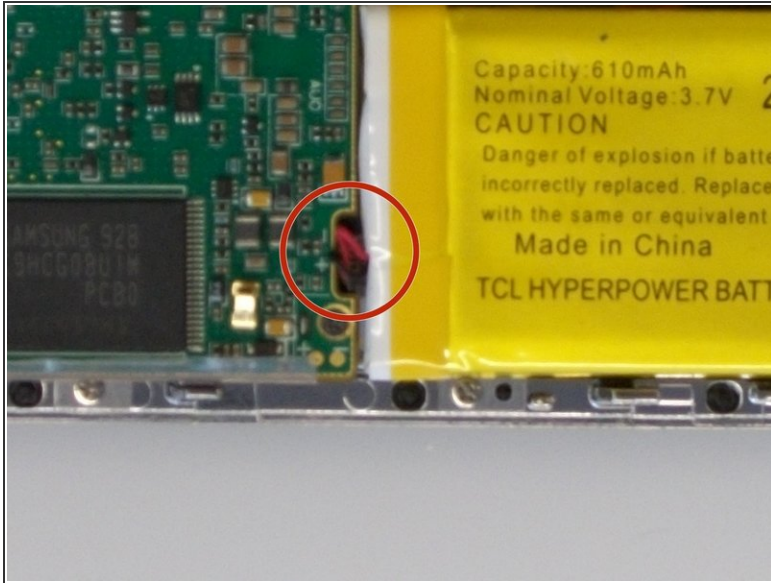
- Push on the backplate with both thumbs, sliding it towards the top of the device.
- Once it begins to move, lift up slightly. You can then slide the backplate all the way off.

Step 4 — Printed Circuit Board



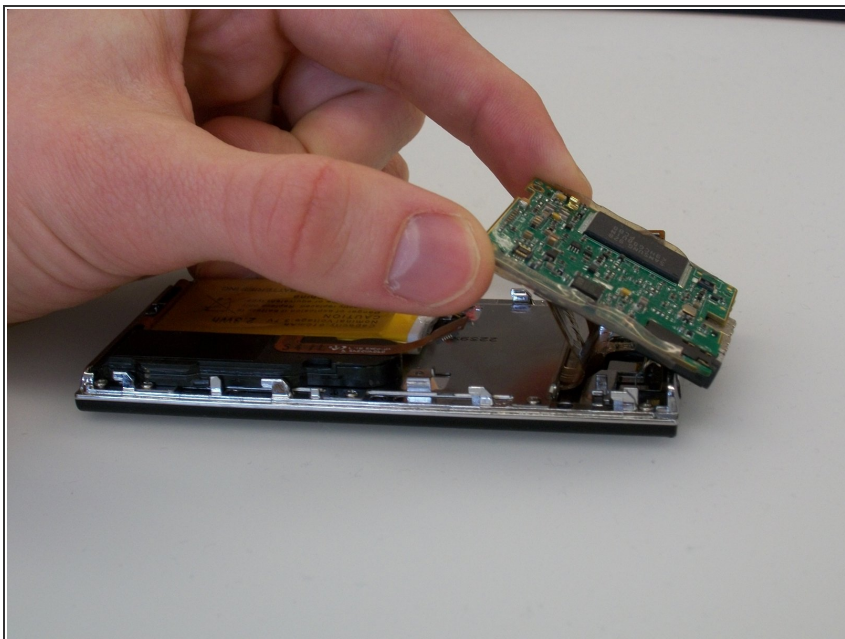
- Before removing the circuit board, we must remove the ribbon-like wires attached to two sides of the circuit board.
- There are two screws (Phillips #000, 2.0 mm long) holding in the circuit board. Use a Phillips #000 screwdriver to take out those screws.

Step 5



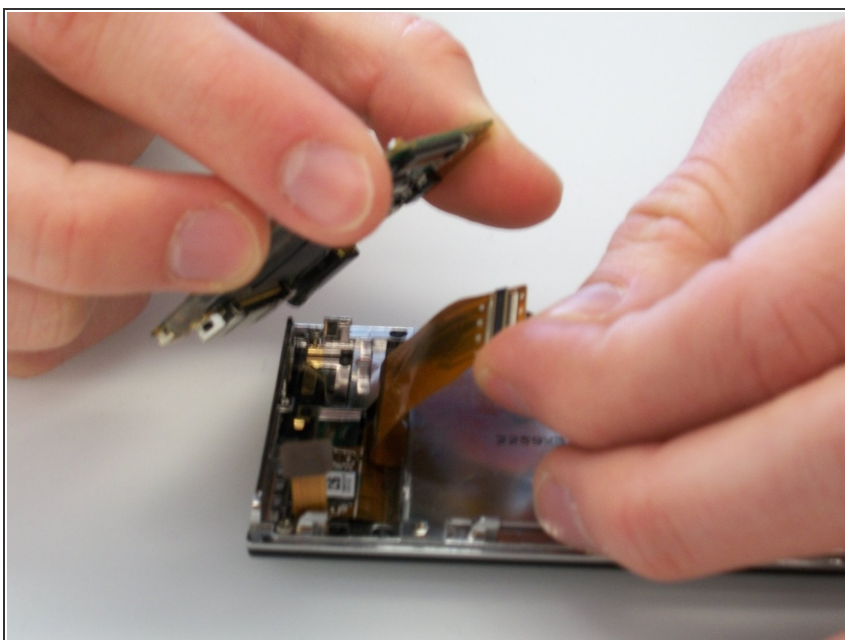
- The battery is also attached to the circuit board by a cable. The cable is difficult to disconnect with both components in place. It's best to lift the circuit board out partially to give yourself more room to disconnect the connector.
- The wire that is connected to the circuit board is connected by a plastic piece with two metal prongs.
- Use the pointy end of the spudger to place in between the computer board and the plastic piece and gently pry the prongs away from the circuit board.

Step 6



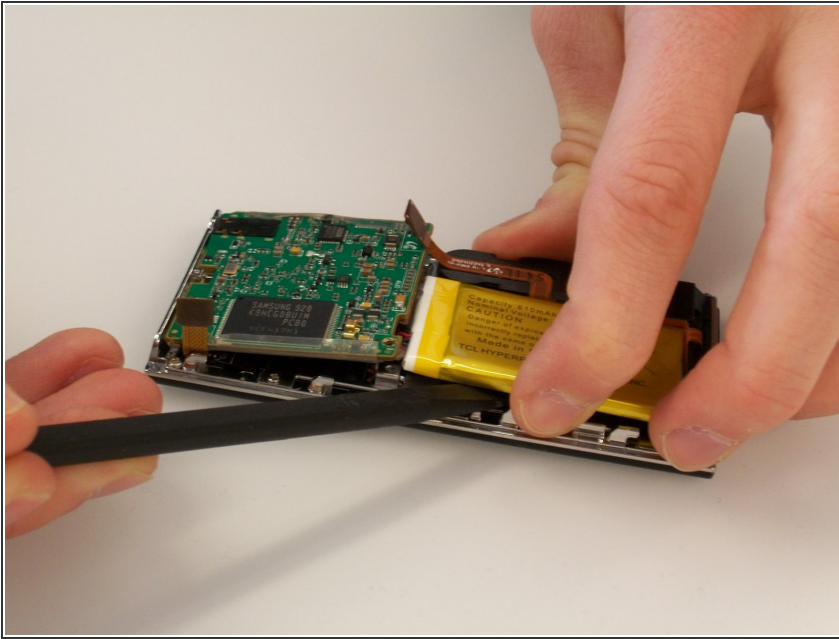
- Disconnect the battery connector, and then lift the circuit board up.

Step 7



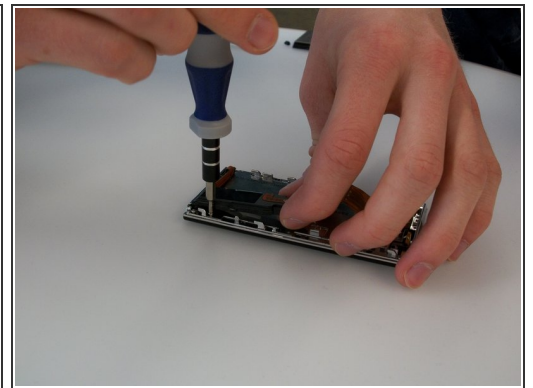
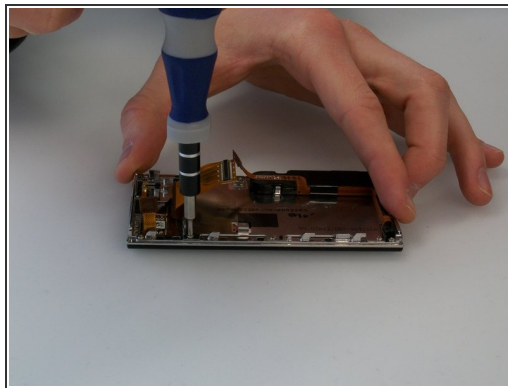
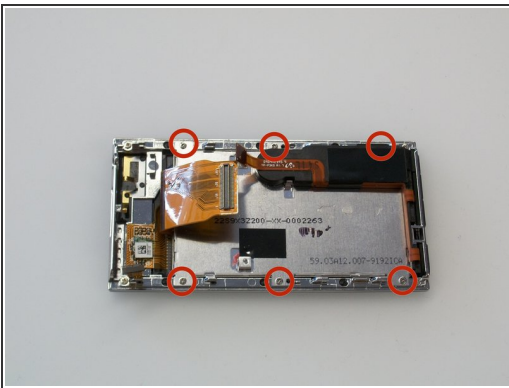
- Finally, disconnect the ribbon cable on the bottom of the circuit board. You can then lift the circuit board all the way out.

Step 8 — Battery



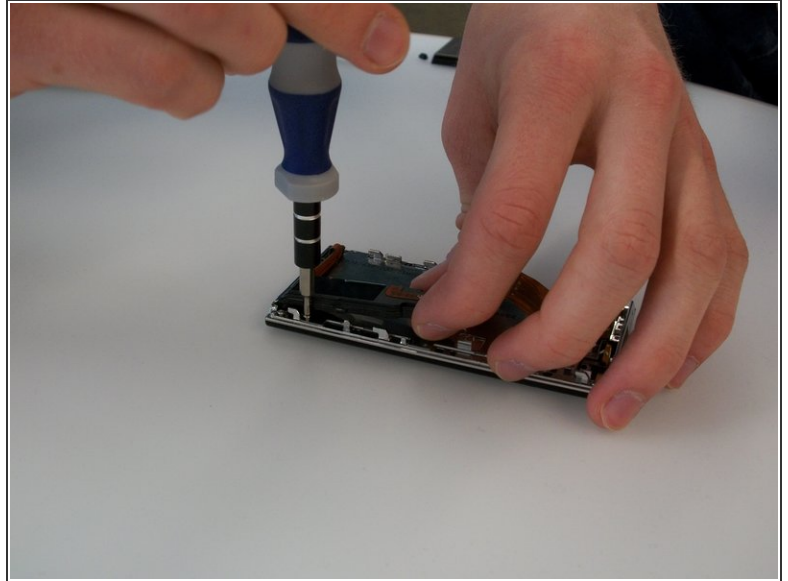
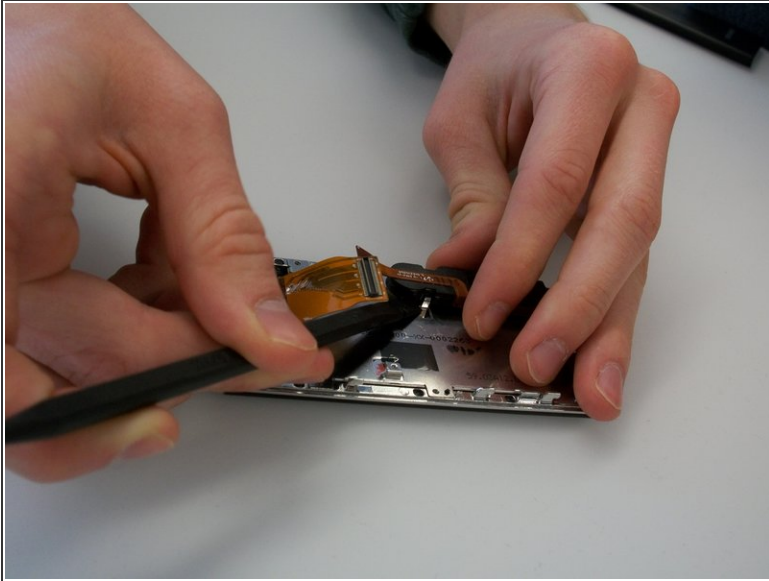
- Use the spudger to carefully pry up the battery. The battery is attached with a few spots of glue, so it may not move at first.

Step 9 — Touch Screen



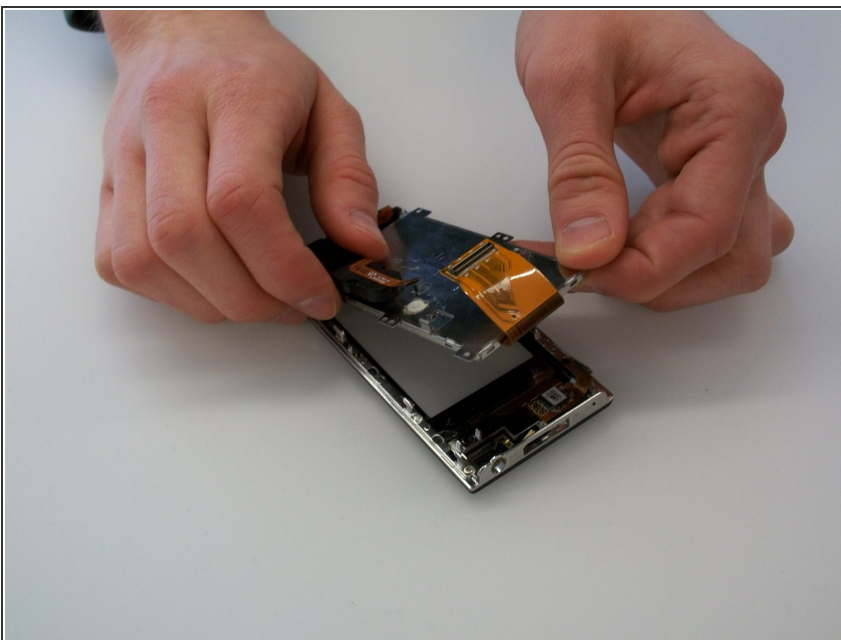
- Remove the six screws (Phillips #000, 2.3 mm long) holding the screen frame to the front of the case. As the picture shows, one of them is hidden under the black speaker/rumble assembly.

Step 10



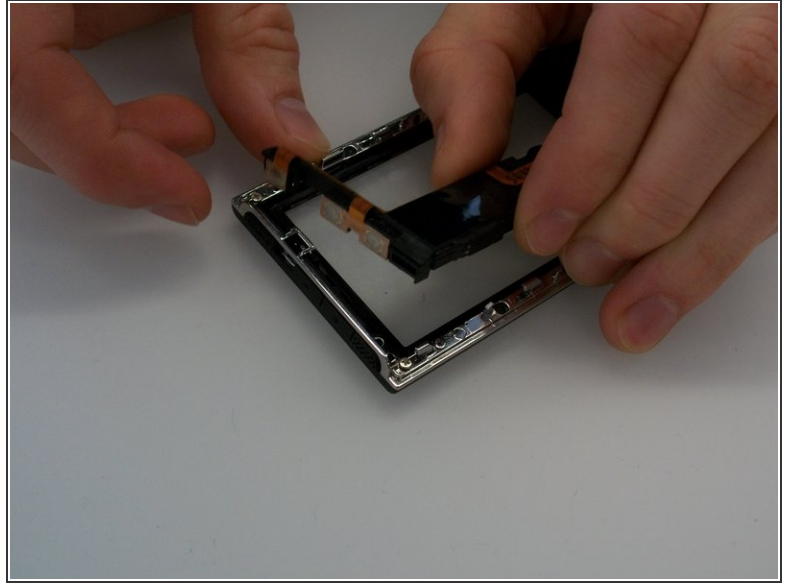
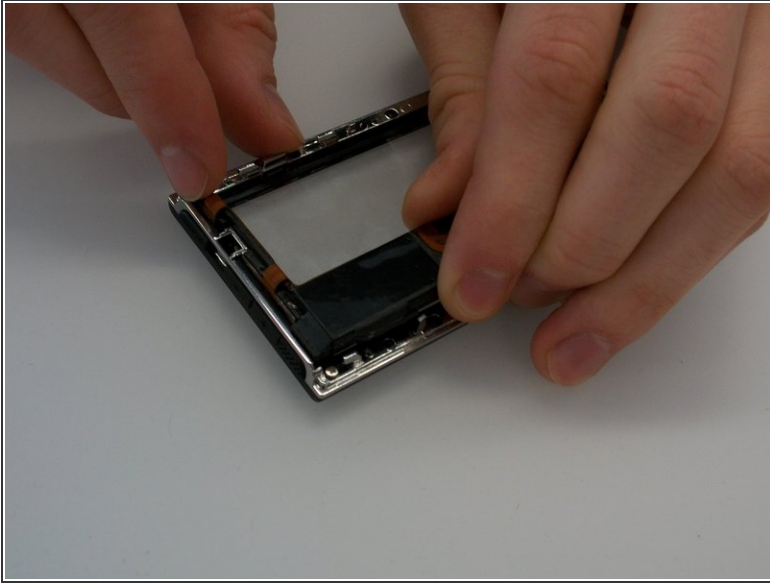
- To access the screw under the black speaker rumble/assembly, you will need to pry the assembly up slightly using the spudger.
- ⚠ The assembly is glued to the back of the screen, so the assembly may not move at first. Be patient and careful. Do not pry too hard, or you may break the assembly.

Step 11



- Lift the screen out from the case.

Step 12 — Buttons



- The buttons, built-in speaker, and rumble device are all contained in a black plastic assembly. This assembly simply snaps into place at the top of the case. Lift up gently to remove it from its place.

To reassemble your device, follow these instructions in reverse order.