

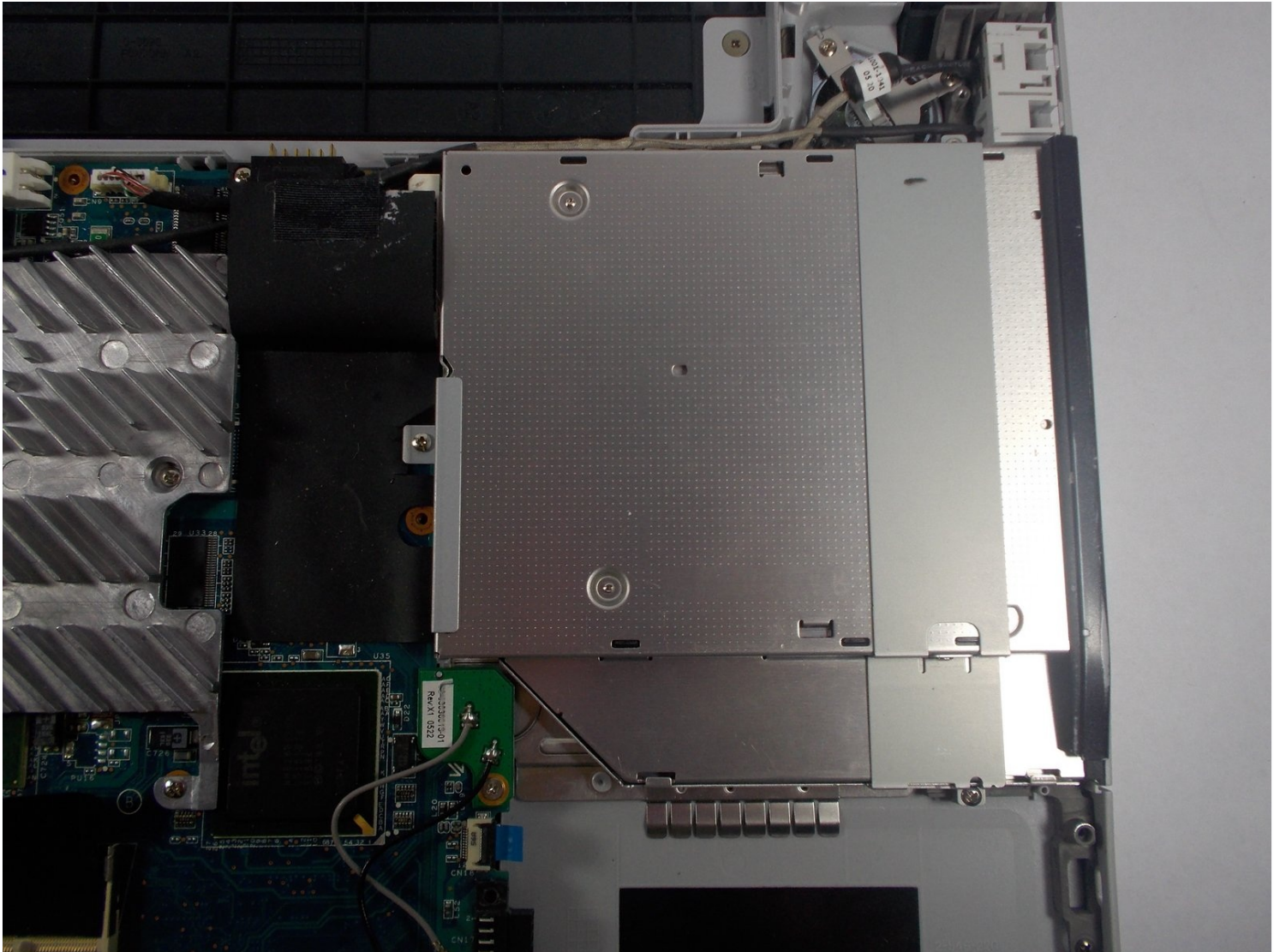


Archived

Sony Vaio VGN-FS640 Disk Drive Replacement

This guide will instruct you how to remove and...

Written By: Geoffrey



INTRODUCTION

This guide will instruct you how to remove and replace the disk drive in your Sony Vaio VGN-FS640.

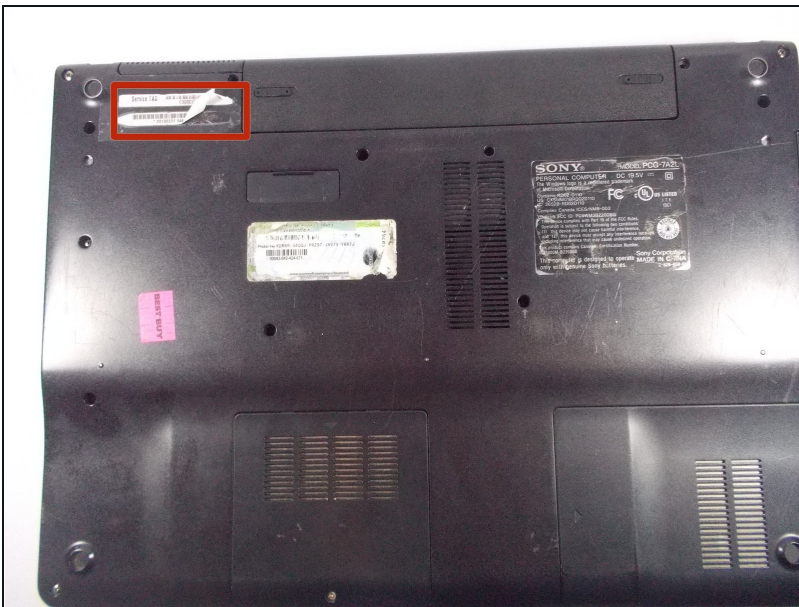
TOOLS:



Phillips #0 Screwdriver (1)

PARTS:

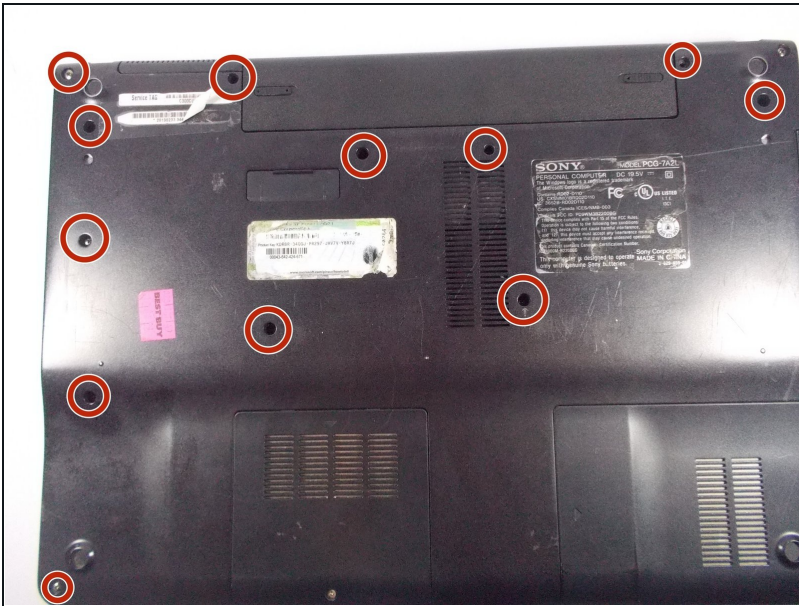
CD DVD drive (1)

Step 1 — Backplate



-  Turn off the laptop and disconnect any charging cables.
-  Flip the laptop over so that the Service Tag is shown at the top left corner.

Step 2



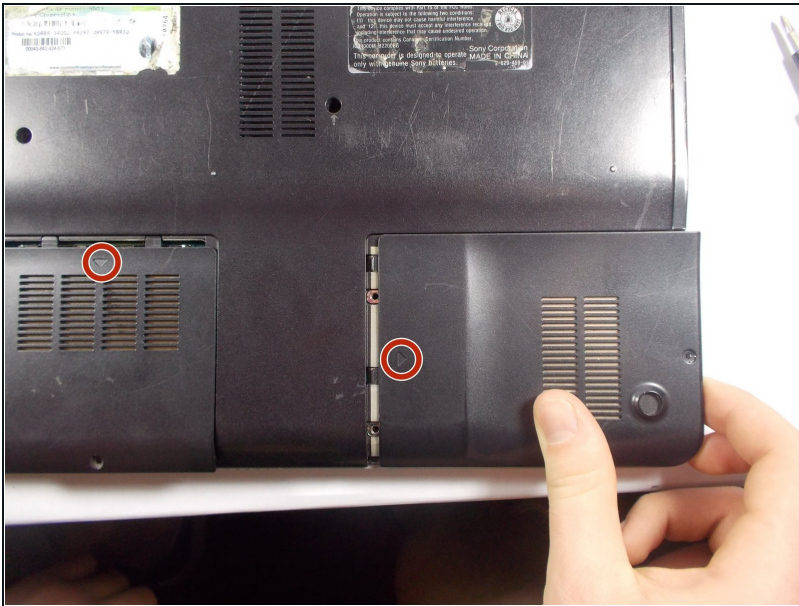
- Remove the highlighted screws from the back of the laptop with a Phillips #0 Screwdriver.

Step 3



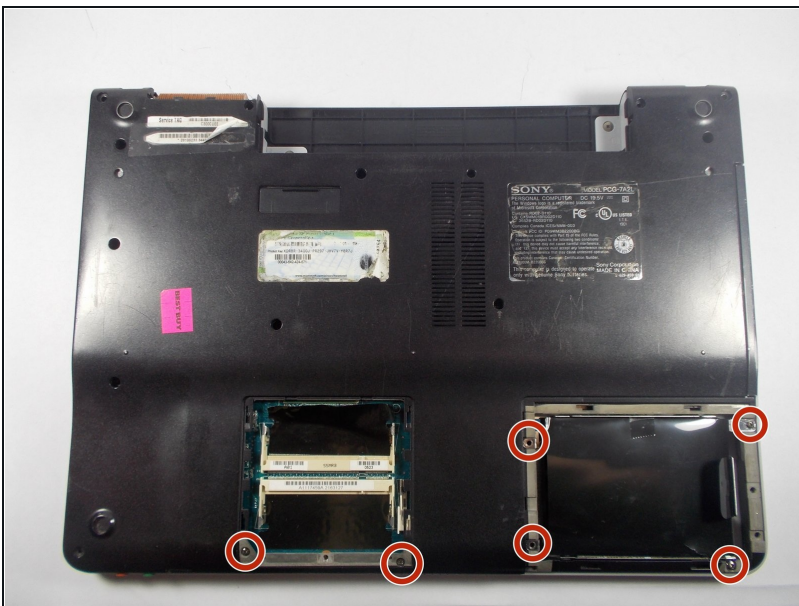
- Remove the highlighted screws from the panels in the bottom right-hand corner of the laptop using the Phillips #0 Screwdriver.

Step 4



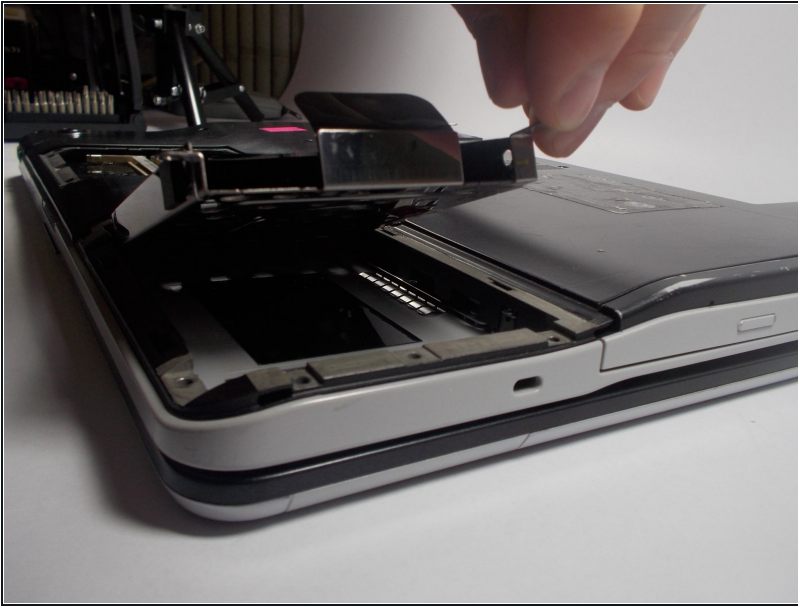
- Remove the two panels in the bottom right-hand corner by sliding in the direction of the arrows imprinted on the panels.

Step 5



- Remove the highlighted screws underneath the removed panels using the Phillips #0 Screwdriver.

Step 6



- Carefully remove the hard drive from the panel in the bottom right-hand corner of the laptop.

Step 7



- Locate the battery, located on the top side of the laptop to the right of the Service Tag .
- Remove the battery by pressing inwards on the tabs on either side of the battery.

Step 8



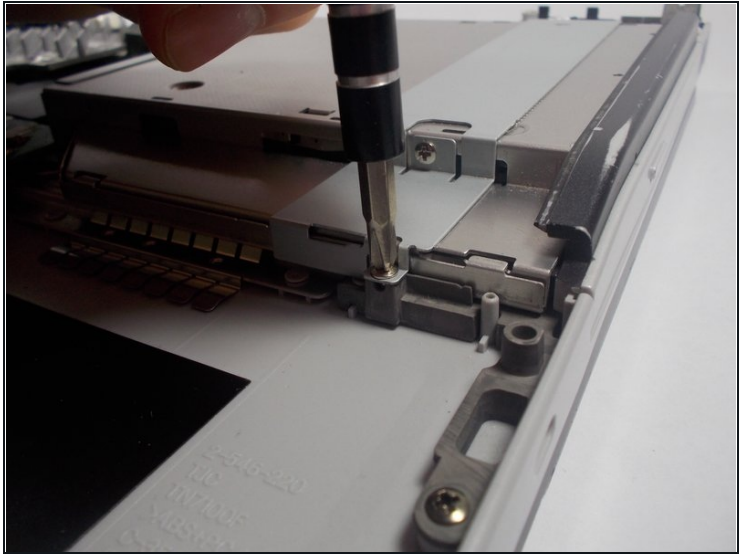
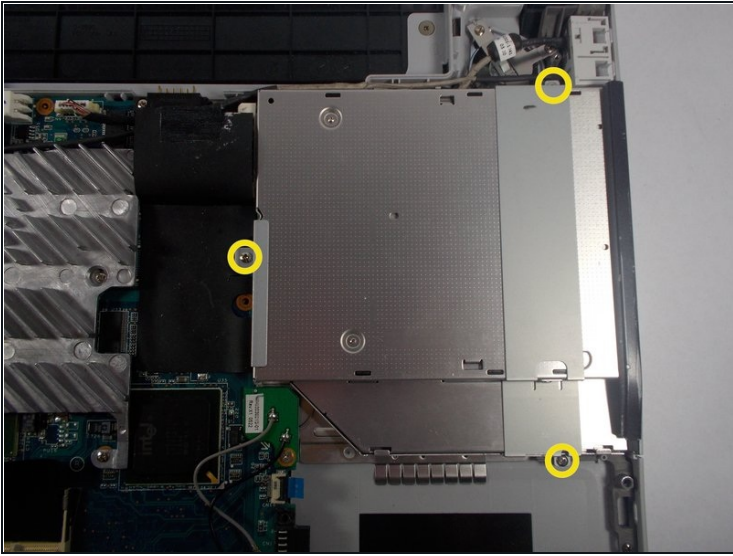
- Remove cover in the top left side of the laptop next to the battery by pulling it outwards.

Step 9



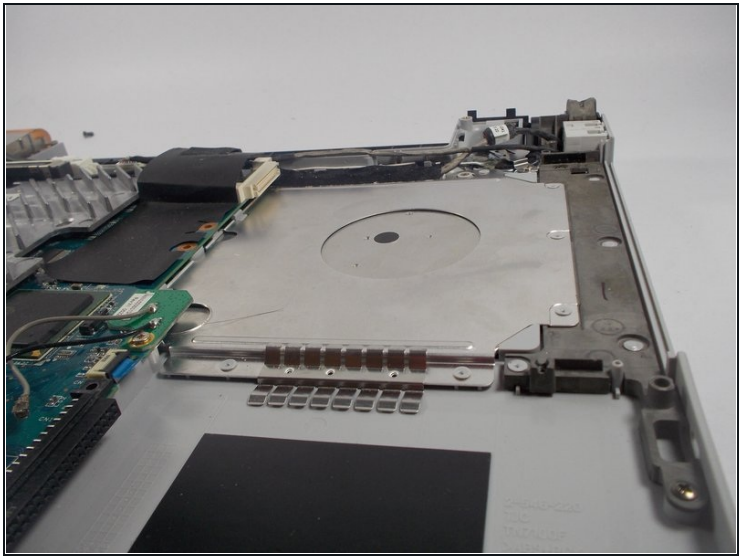
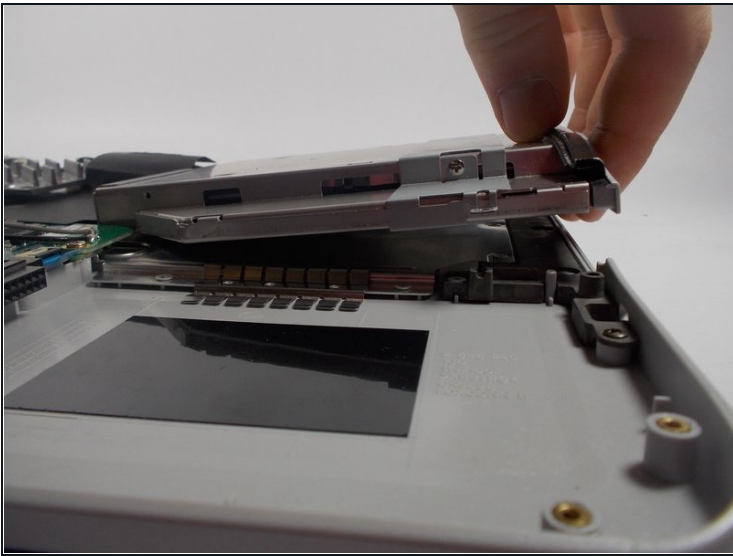
- Remove the backplate of the laptop by pulling it away from the laptop.

Step 10 — Disk Drive



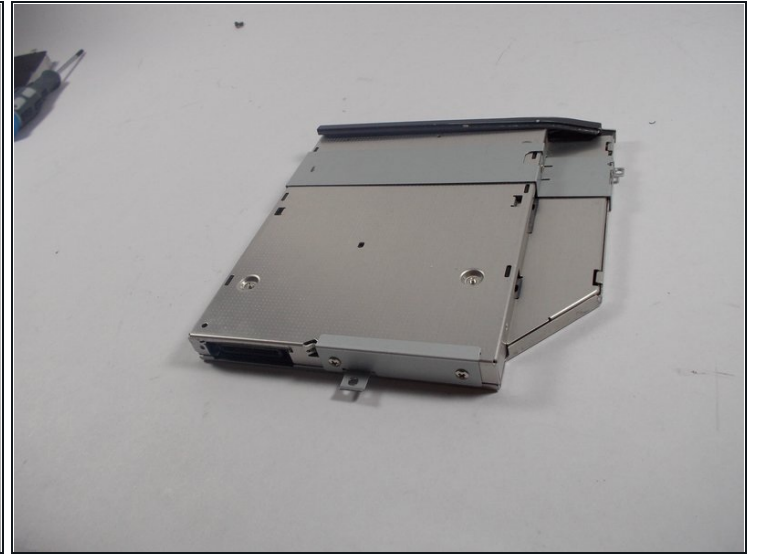
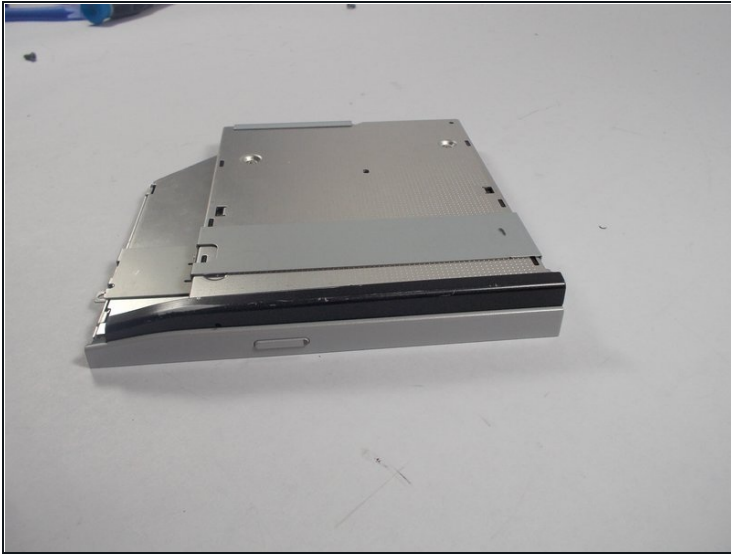
- Unscrew the screws holding in the CD/ DVD drive.

Step 11



- Remove the CD/ DVD drive by gently lifting it up and out of the laptop.

Step 12



- **Get the new CD/ DVD drive.**

⚠ Make sure that the new CD/ DVD drive is compatible with the Vaio VGRFS640

⚠ Sony no-longer has a list of compatible drivers, however the original driver can be found [here](#) under optical drive.

To reassemble your device, follow these instructions in reverse order.