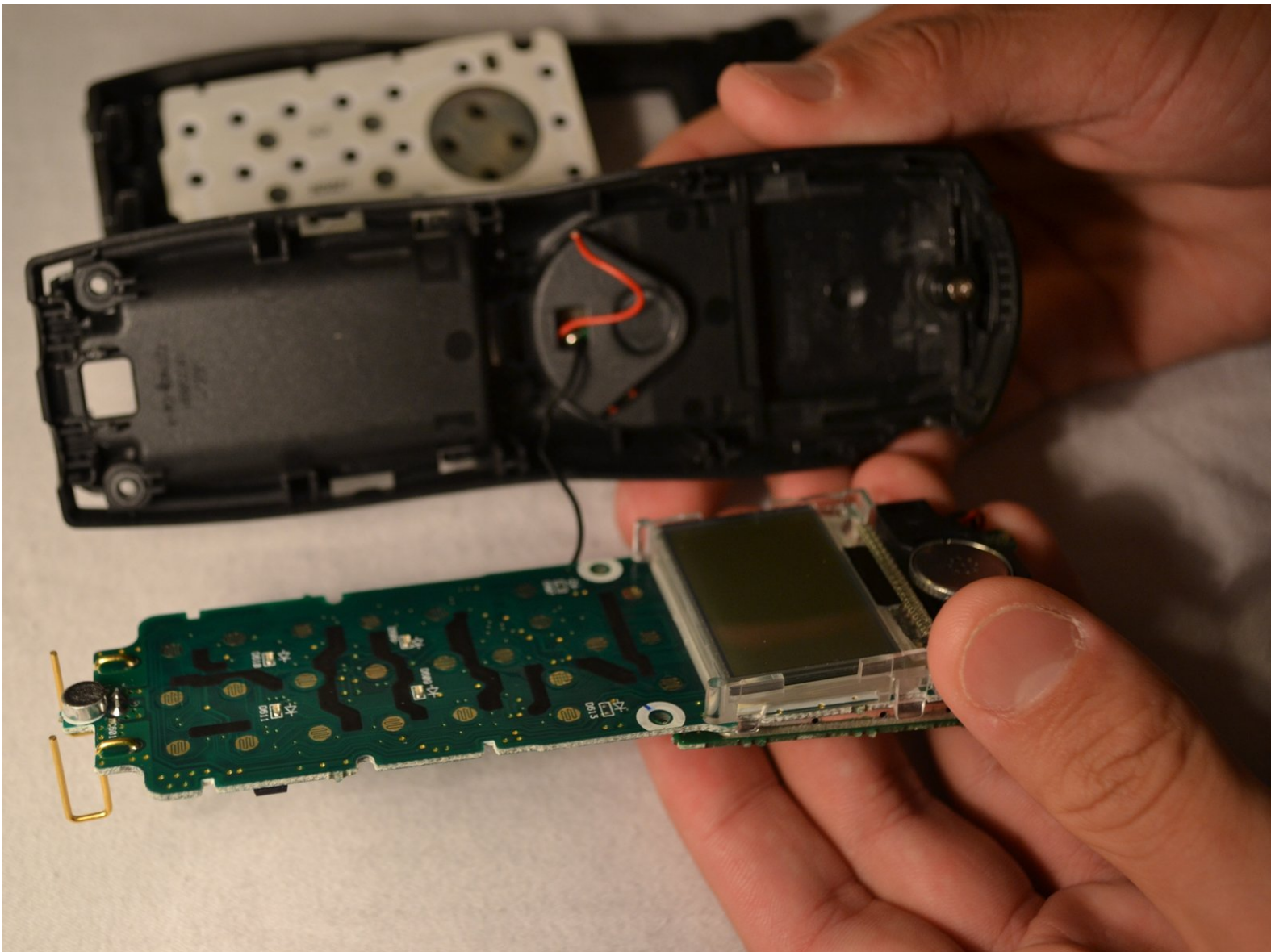




# Uniden TCX905 Earpiece Speaker Replacement

This guide will show the user how to replace the earpiece speaker.

Written By: Gary Pence



## INTRODUCTION

The earpiece is where the user hears the incoming call.



### TOOLS:

- [Phillips #1 Screwdriver](#) (1)
- [Flush Wire Cutters](#) (1)



### PARTS:

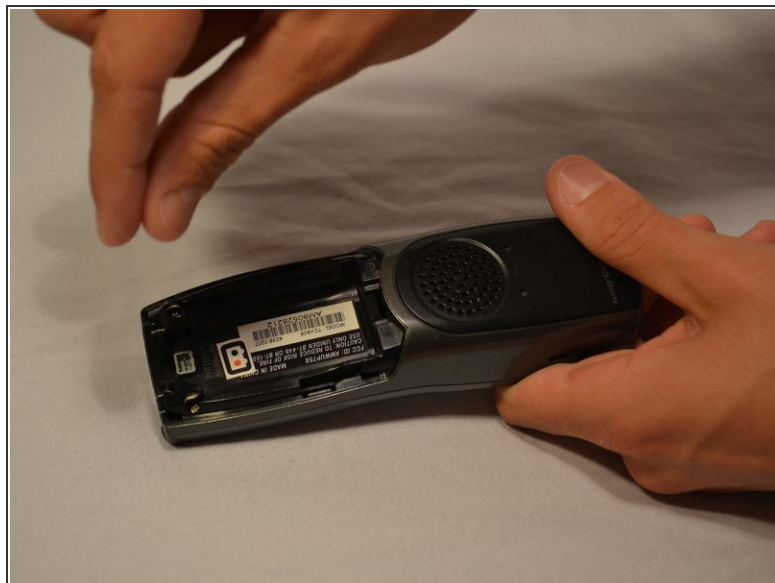
- [Uniden TCX905 Earpiece Speaker](#) (1)

## Step 1 — Battery Cover



- Starting from the top of the cover, slide down and away from the phone with your thumb
- Lift battery cover off of batter and place it to the side

## Step 2 — Battery Pack



- Once battery cover is removed, place your thumb and index fingers on the the wires near the receptacle
- Gently pull straight up on the wires until a click is heard which signifies the battery is completely disconnected
- Place battery pack to the side

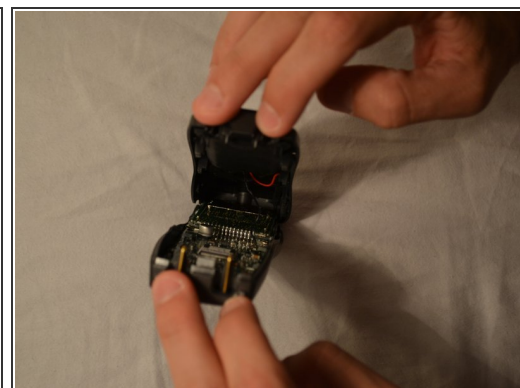
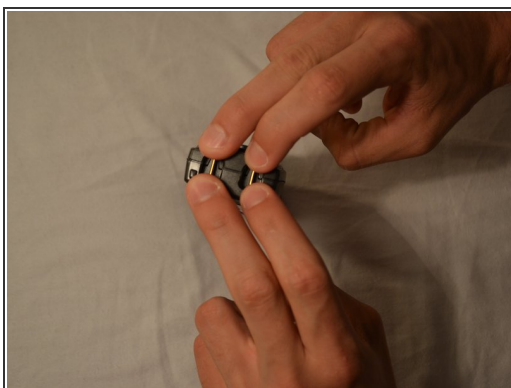


## Step 3 — Back Shell



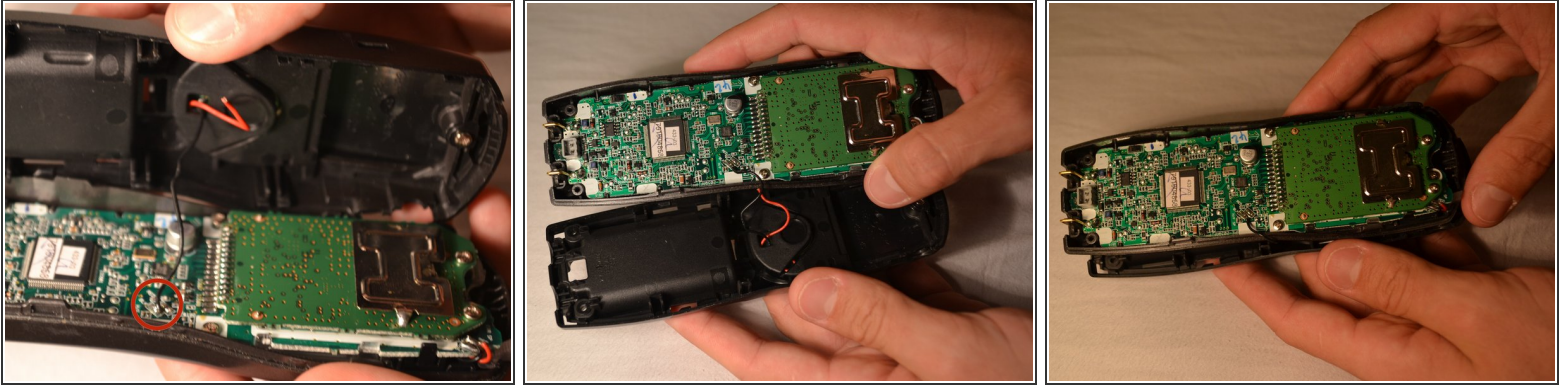
- Remove the two 11mm screws inside the battery storage compartment using Phillips #1 screwdriver (located near the very bottom of the phone)

## Step 4



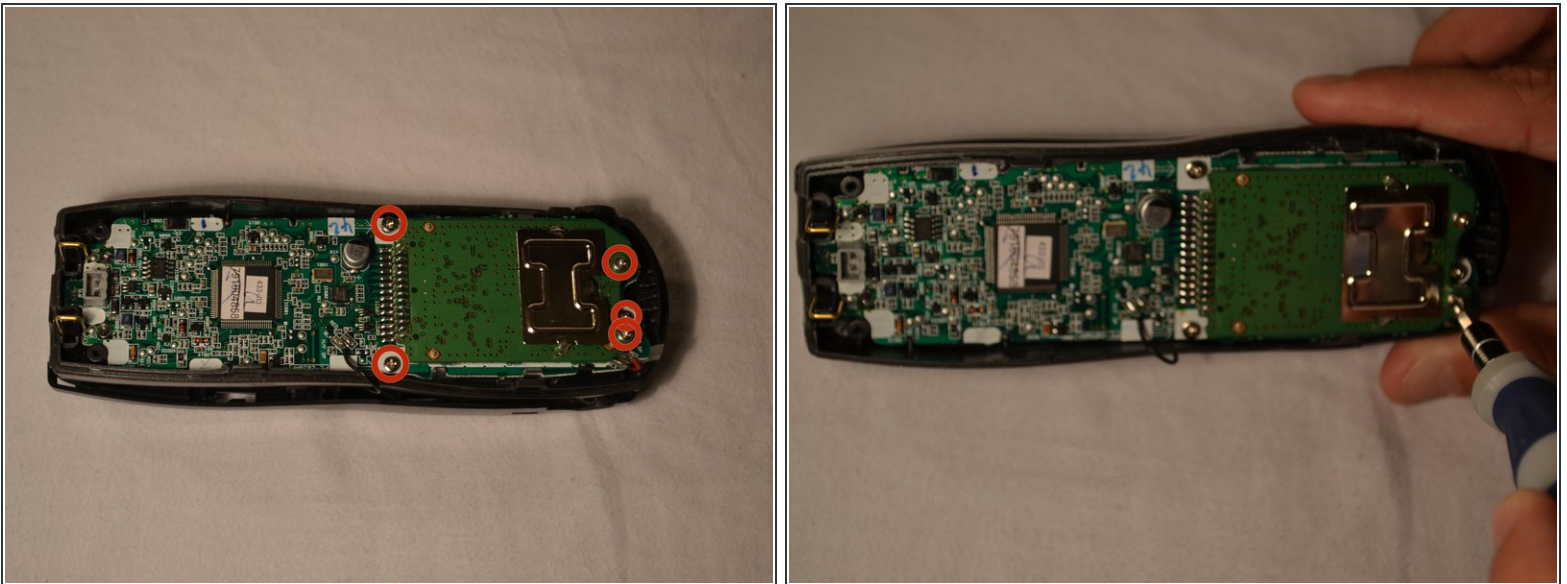
- Gently open phone casing along the seam at the bottom of the phone using index and middle fingers of both hands

## Step 5



- Ensure that wired connection between circuit board and back shell is not strained
- Fold the back shell underneath the front shell and circuit board

## Step 6 — Circuit Board



- Carefully remove the middle two 7mm screws, the outer top 9mm screws, and the top middle 7 mm screw that hold the logic board to the front shell of the phone casing using the Phillips #1 screwdriver

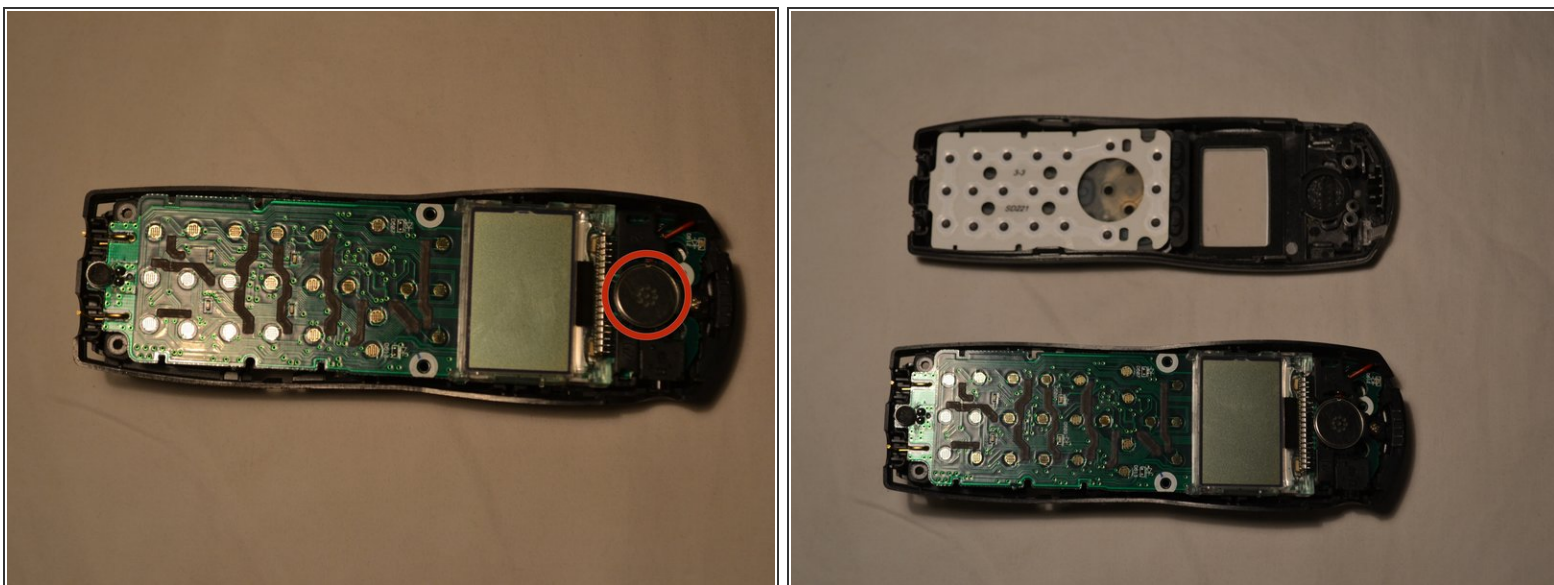


## Step 7



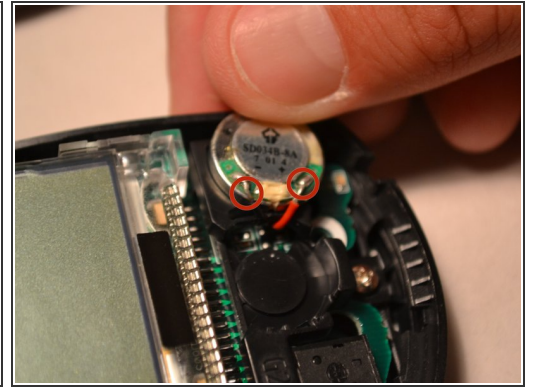
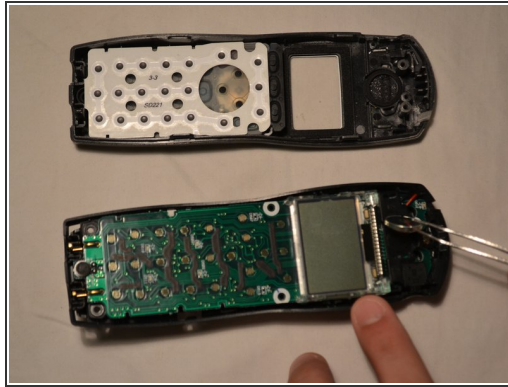
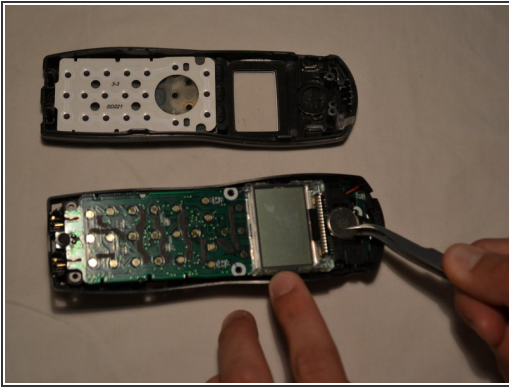
- Using index finger and thumb, carefully remove the circuit board from the front shell of phone

## Step 8 — Earpiece Speaker



- Place circuit board gently on the back shell with the earpiece facing up

## Step 9



- Pry speaker gently from setting using tweezers
- Cut red and black wires near the soldering

To reassemble your device, follow these instructions in reverse order.