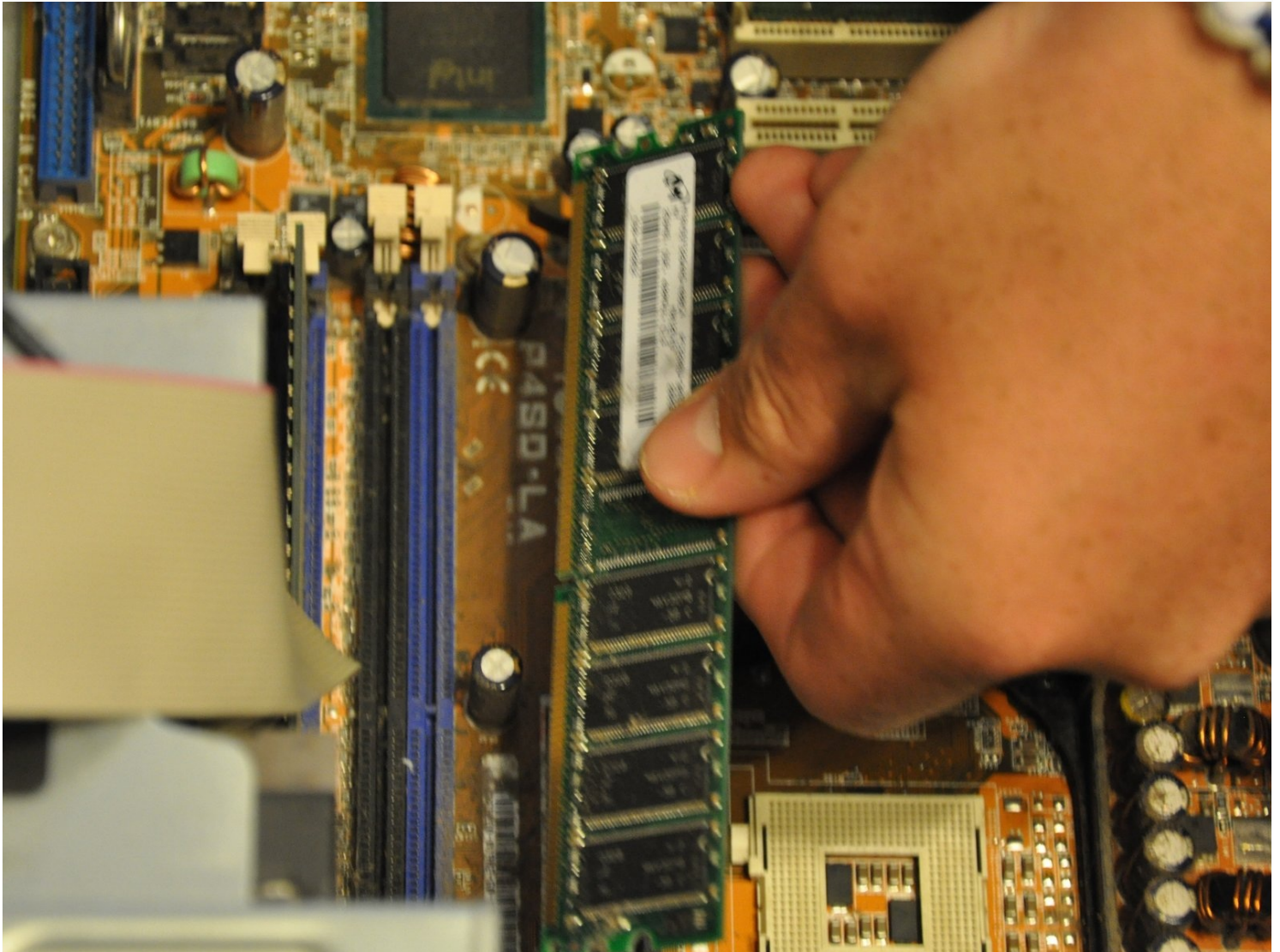




HP Media Center 876x RAM Replacement

RAM is essential to all computational...

Written By: Balakrishnan Pillai



INTRODUCTION

RAM is essential to all computational processes. Qualitatively, high quantities of RAM result in a "faster" user experience, while low levels of RAM result in sluggish computer response. If your HP Media Center 876x is unusually slow, it may be necessary to add new, or replace existing, RAM.

TOOLS:

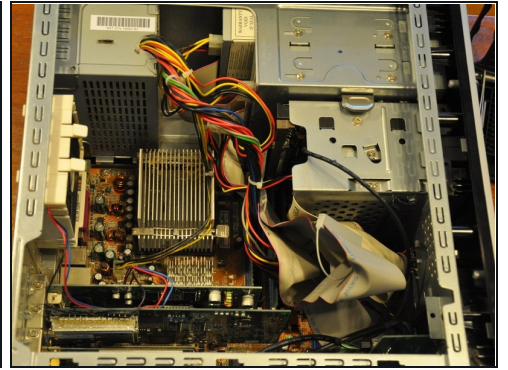
Phillips #1 Screwdriver (1)

Step 1 — Side Panel



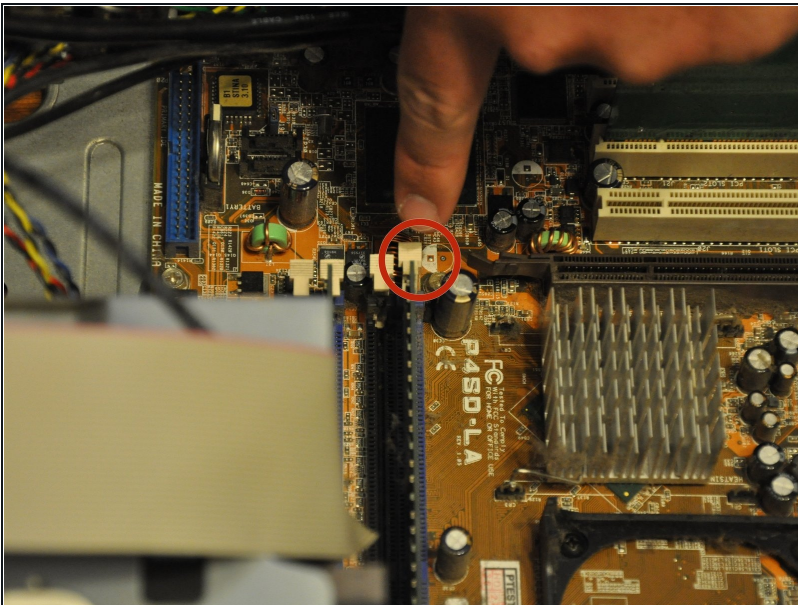
- Remove the two (9 mm) hand screws on the back panel.

Step 2



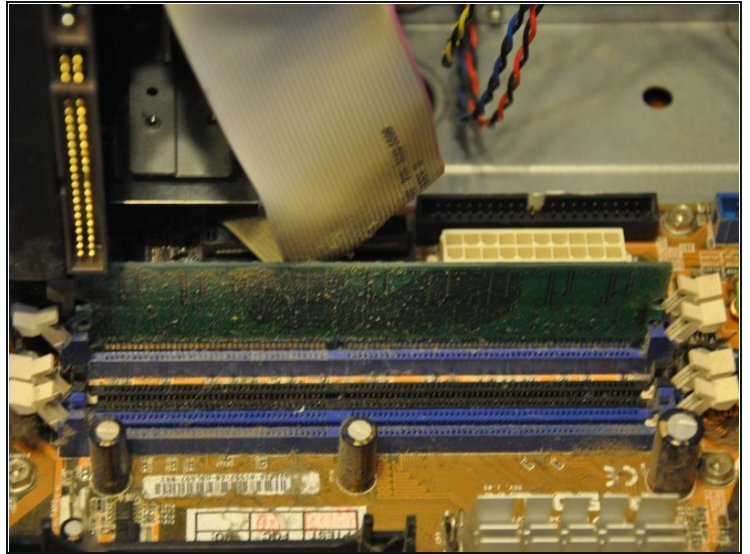
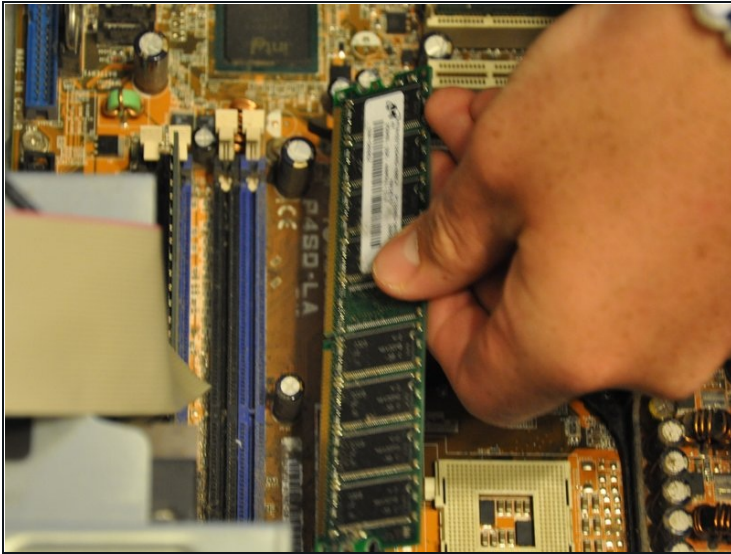
- Place the tower on its side.
- Slide the side panel horizontally to detach, and pull upward to remove.

Step 3 — RAM



- Identify the RAM card (distinguished by the beige fastening tabs).
- Push tab away from RAM card (into the open position).
- ⓘ Be sure to open all fastening tabs (2 per RAM card) before moving forward.

Step 4



- Pull RAM card vertically out of slot.

To reassemble your device, follow these instructions in reverse order.