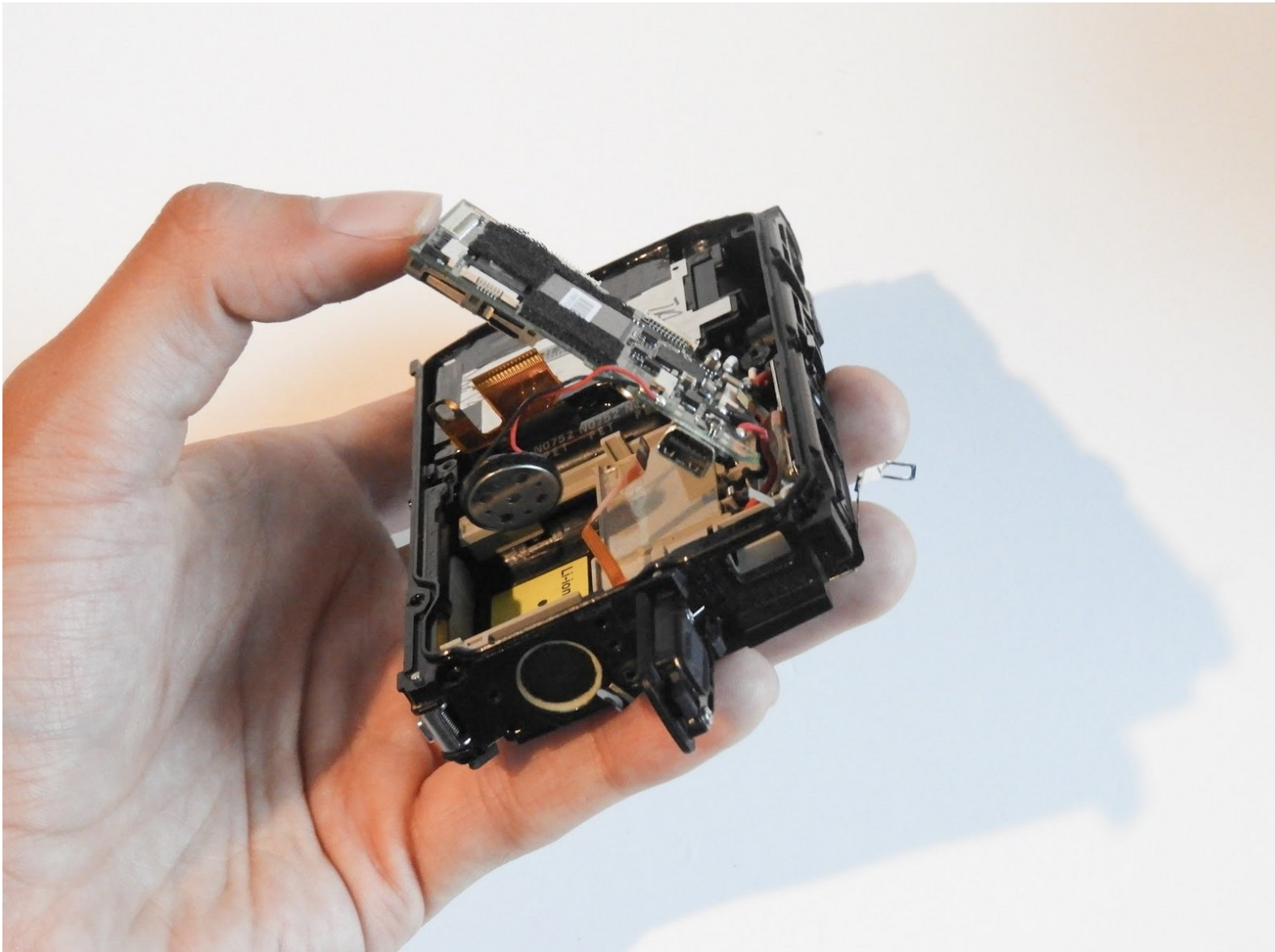




Olympus Stylus 1030 SW Motherboard Replacement

Give a short summary.

Written By: Katie





TOOLS:

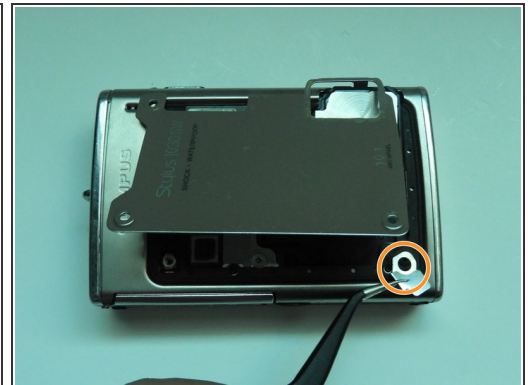
- [Phillips #00 Screwdriver](#) (1)
- [iFixit Opening Tools](#) (1)
- [Spudger](#) (1)
- [T6 Torx Screwdriver](#) (1)
- [Tweezers](#) (1)

Step 1 — Olympus Stylus 1030 SW Camera Disassembly



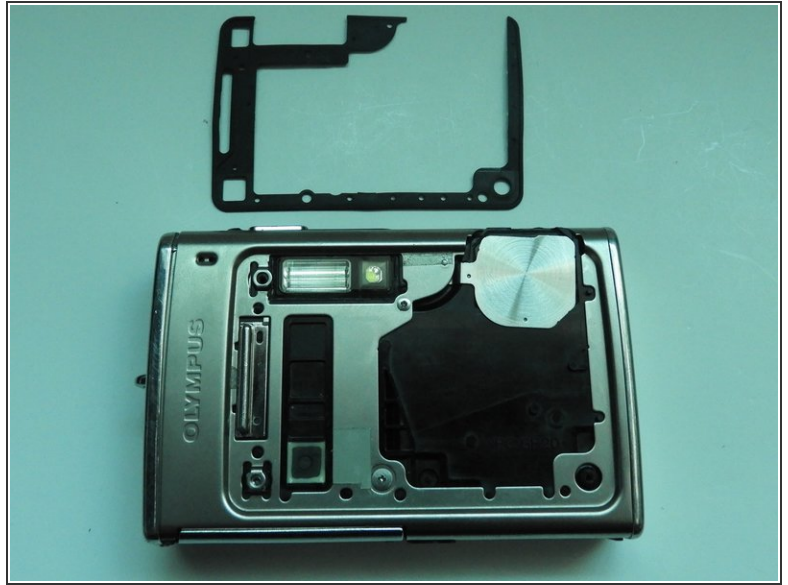
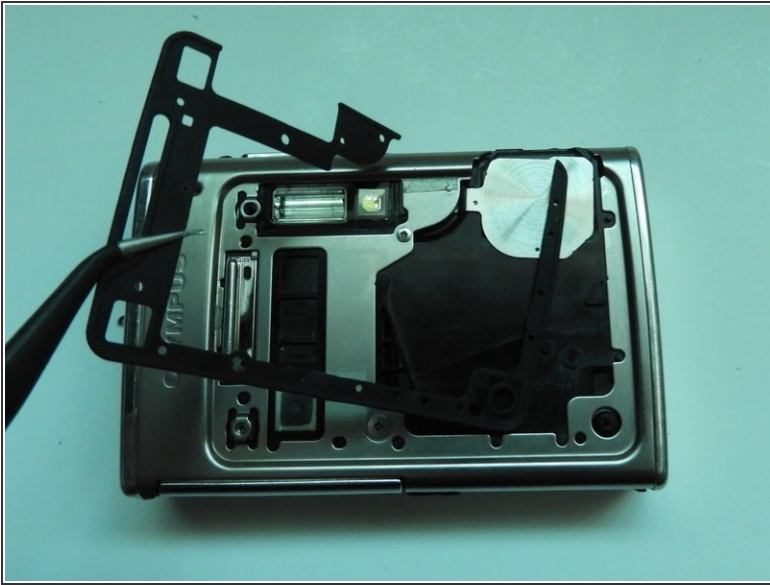
- Using the iFixit Opening Tool, pry off the plastic part of the lens.
- Using the T6 Torx screwdriver, unscrew the three screws.

Step 2



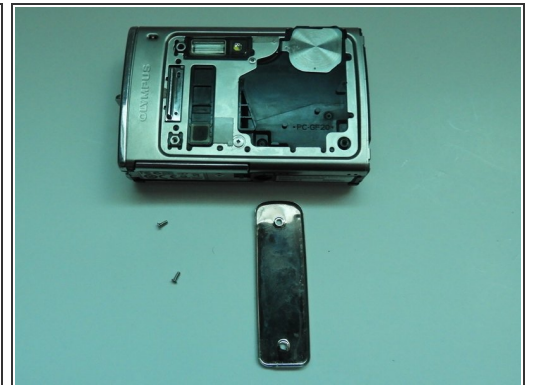
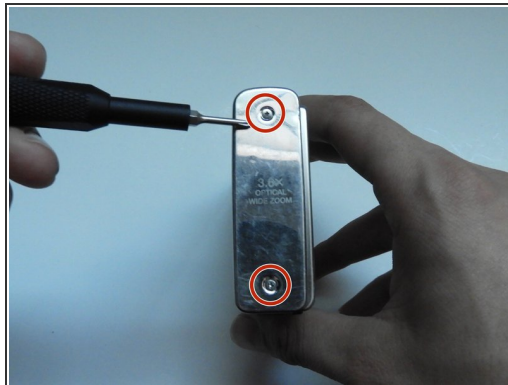
- Using the Phillips #00 screwdriver, unscrew the three screws.
- Carefully swivel the metal cover out towards you.
- Using tweezers, remove the metal washer.

Step 3



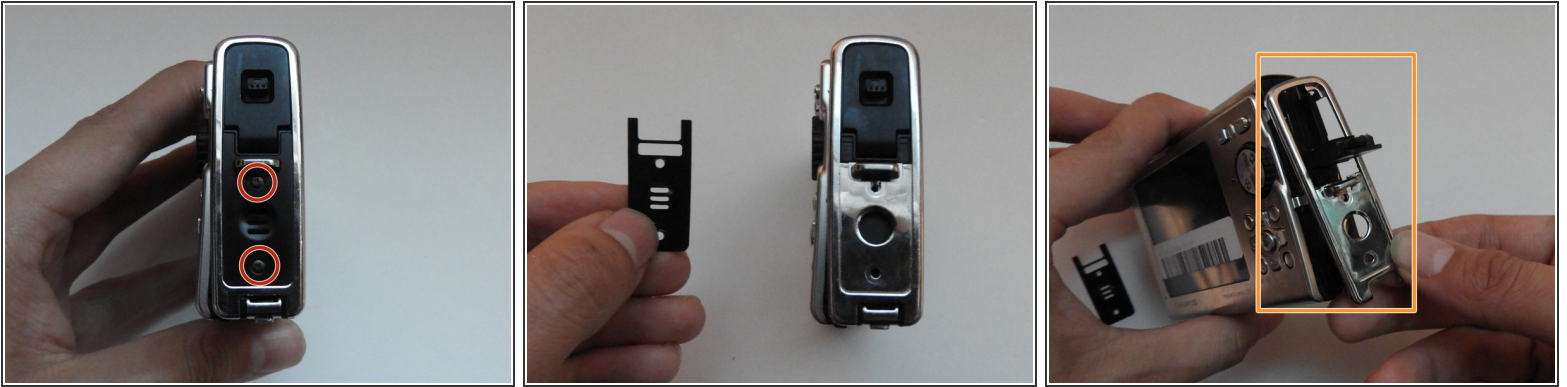
- Using the tweezers, slowly peel off the plate.

Step 4



- Using the Phillips #00 screwdriver, unscrew the two screws on the side of the camera.

Step 5



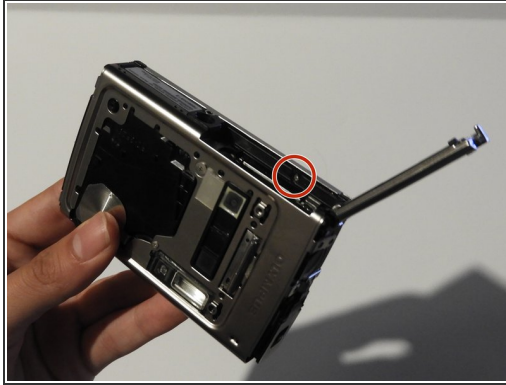
- On the opposite side, use the Phillips #00 screwdriver to unscrew both screws.
- Take out the speaker plate.
- Open the multi-connector cover and slide off the side panel.

Step 6



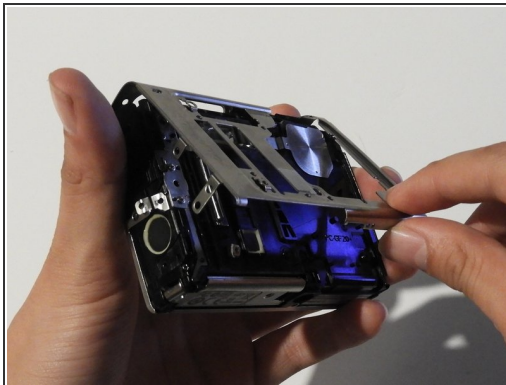
- Using the Phillips #00 screwdriver, unscrew the screw above the speaker.
- On the bottom side of the camera, unscrew the two screws.

Step 7



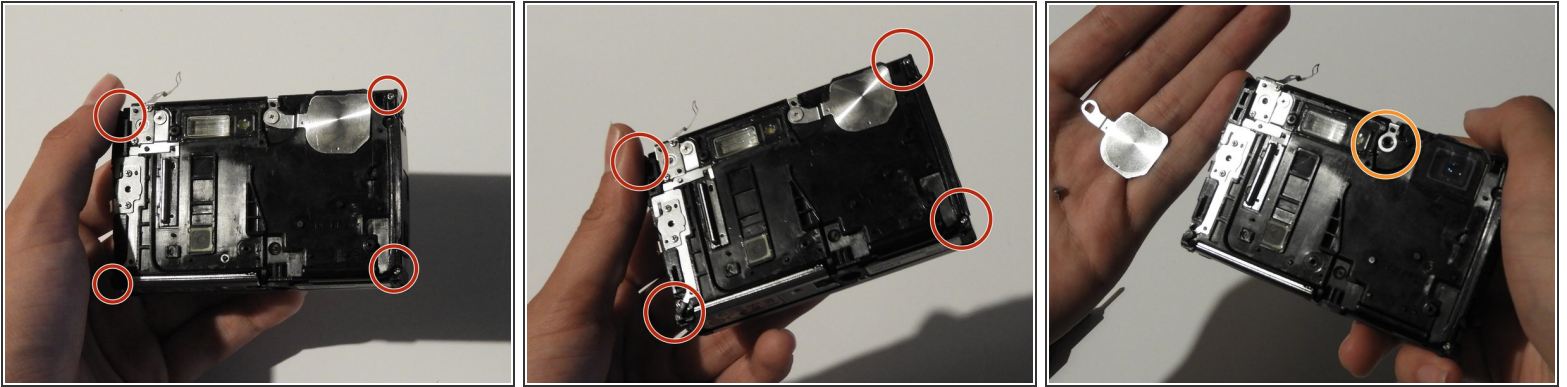
- Open the battery compartment cover.
- Use the Phillips #00 screwdriver to unscrew the screw in the battery compartment.

Step 8



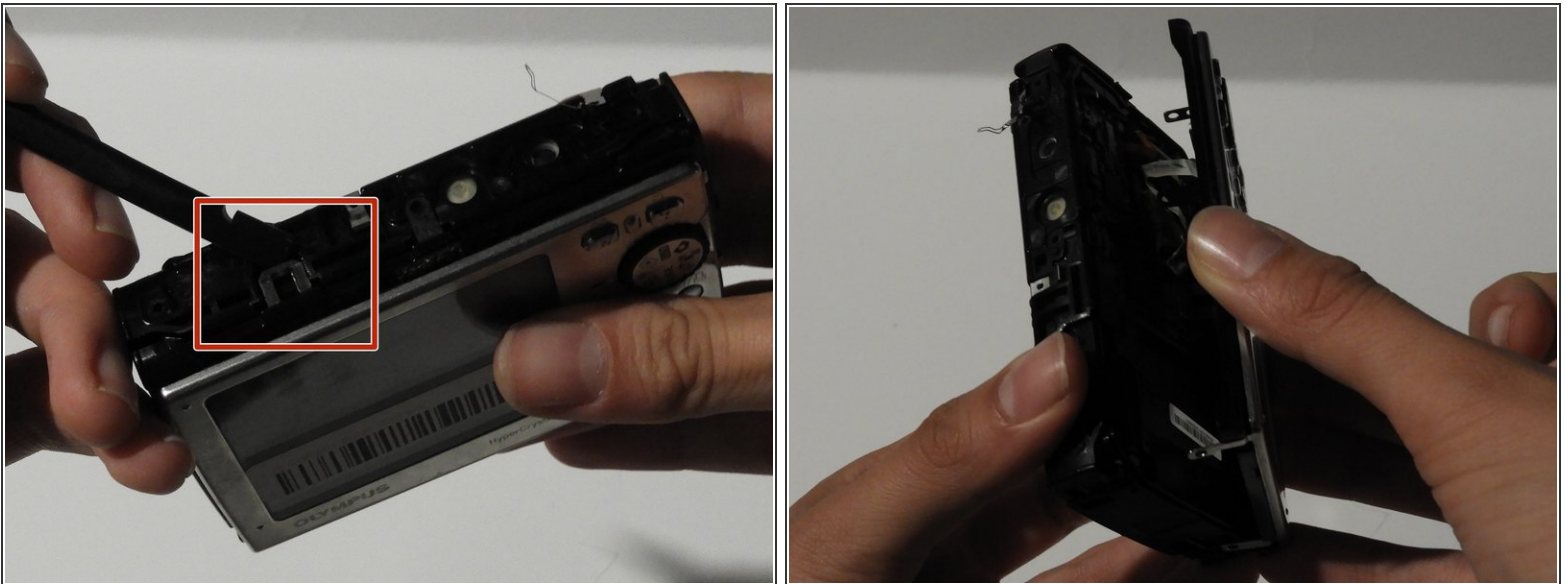
- On the front of the camera, unscrew the two screws shown.
- Gently pull on the side until the camera is separated from the back panel.
- Remove the shutter and power button.

Step 9



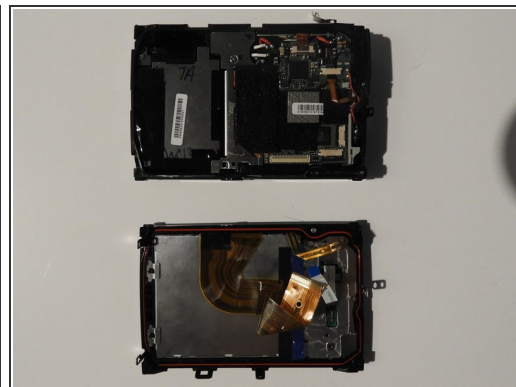
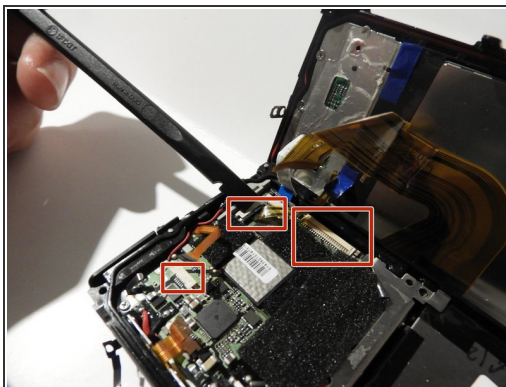
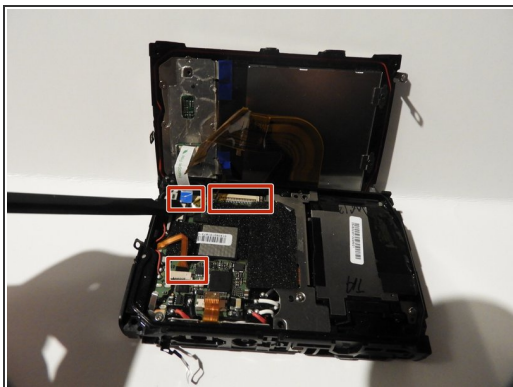
- Use the Phillips #00 screwdriver to unscrew the four screws on the front of the camera.
- Unscrew the shutter using the Phillips #00 screwdriver.

Step 10



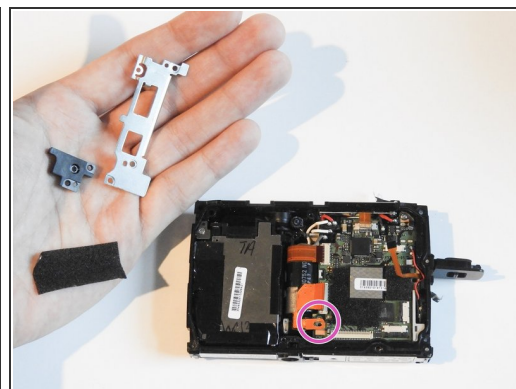
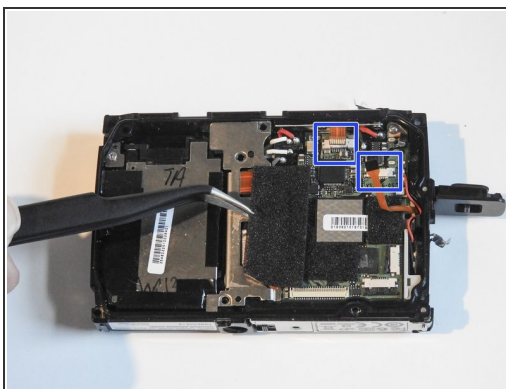
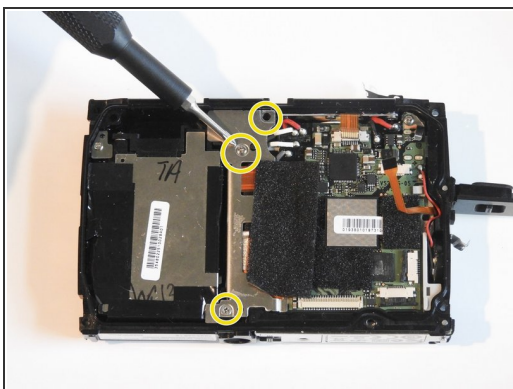
- Release the top holding using a spudger.
- Slowly and carefully separate the front and back of the camera, exposing the electrical ribbons.

Step 11



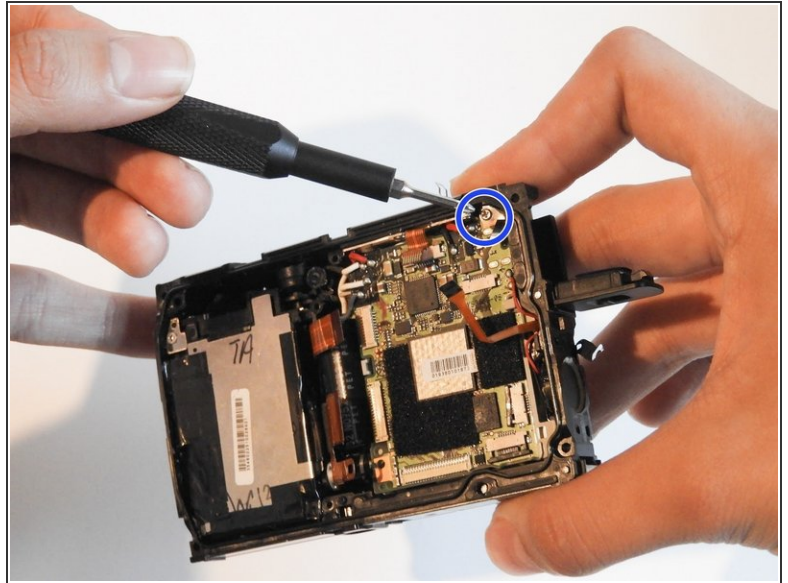
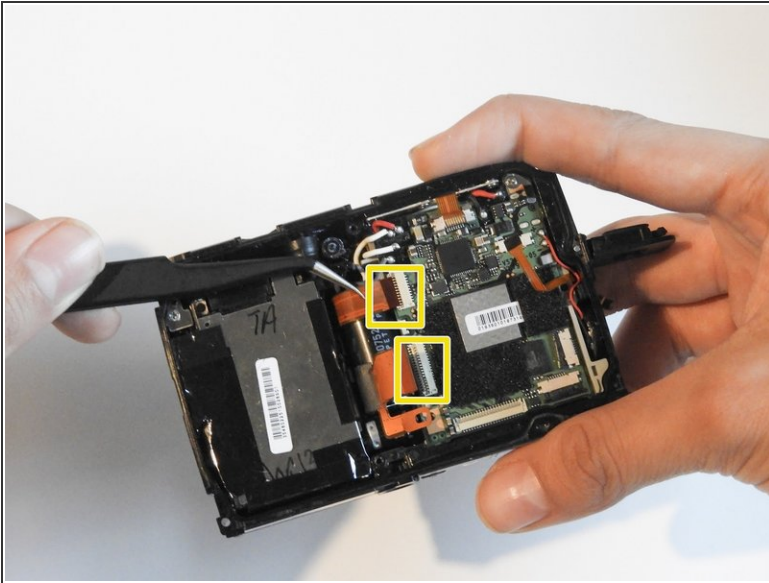
- Using the spudger and tweezers if needed, remove the ribbons from the computer chips.

Step 12 — Motherboard



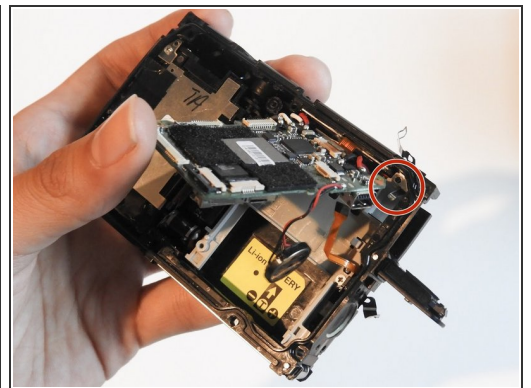
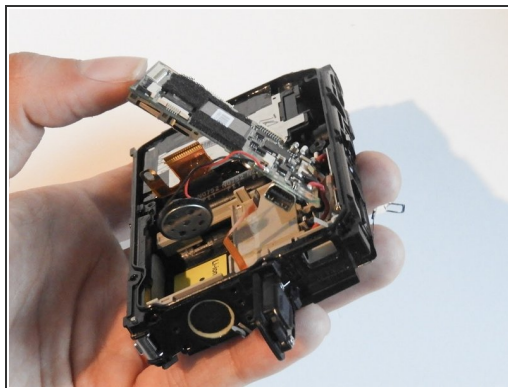
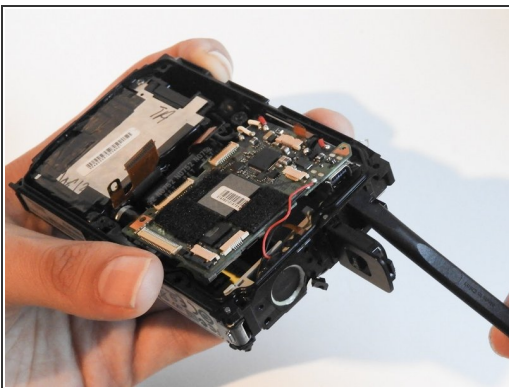
- Remove the 1.0 cm and the 0.8 mm screws.
- Peel off tape and remove ribbons.
- Remove black plastic cover and unscrew the 1.1 cm screw.

Step 13



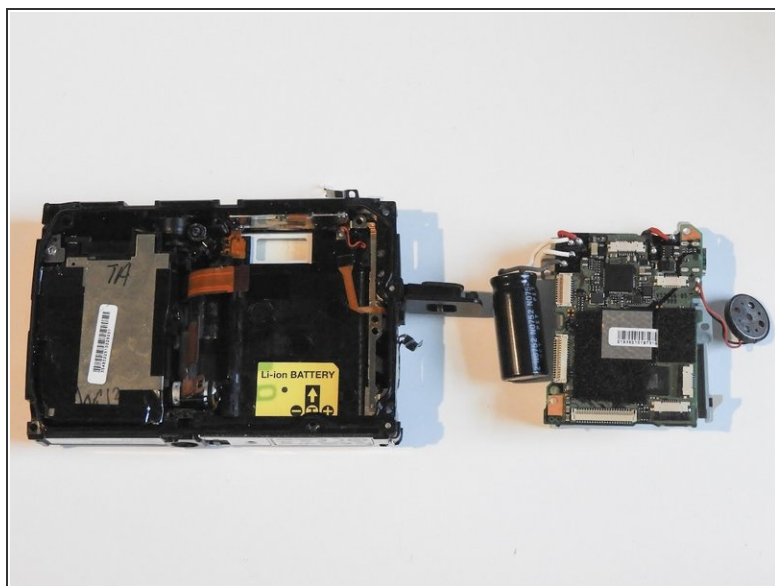
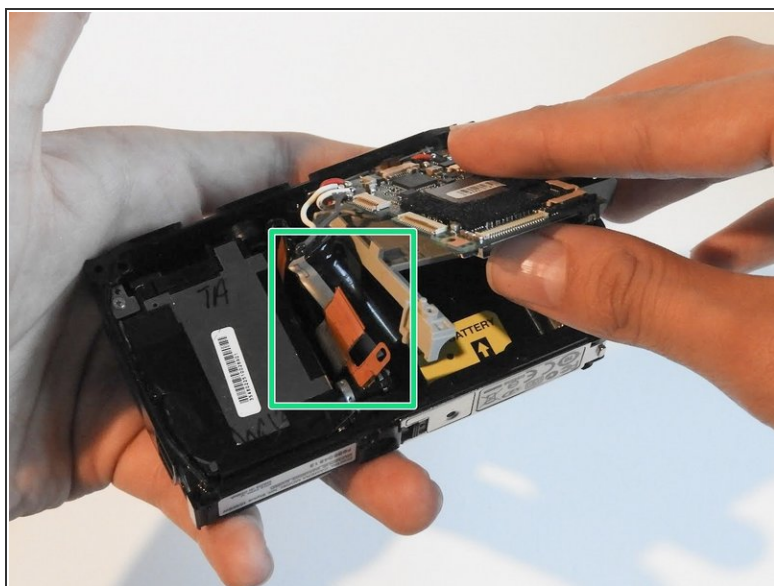
- Release ribbons carefully using either tweezers or a spudger.
- Remove the 1.1 cm screw.

Step 14



- Push A/V port away from you carefully using a spudger.
- Slowly take out the motherboard and the speaker microphone.
- Collect the metal washer plate from the top right corner of the motherboard (now loose).

Step 15



- With a spudger or finger, slowly take out the battery hinged to the motherboard.
 - ⚠ Be careful not to disconnect the wires by pulling it too hard.
- Take out motherboard.

To reassemble your device, follow these instructions in reverse order.