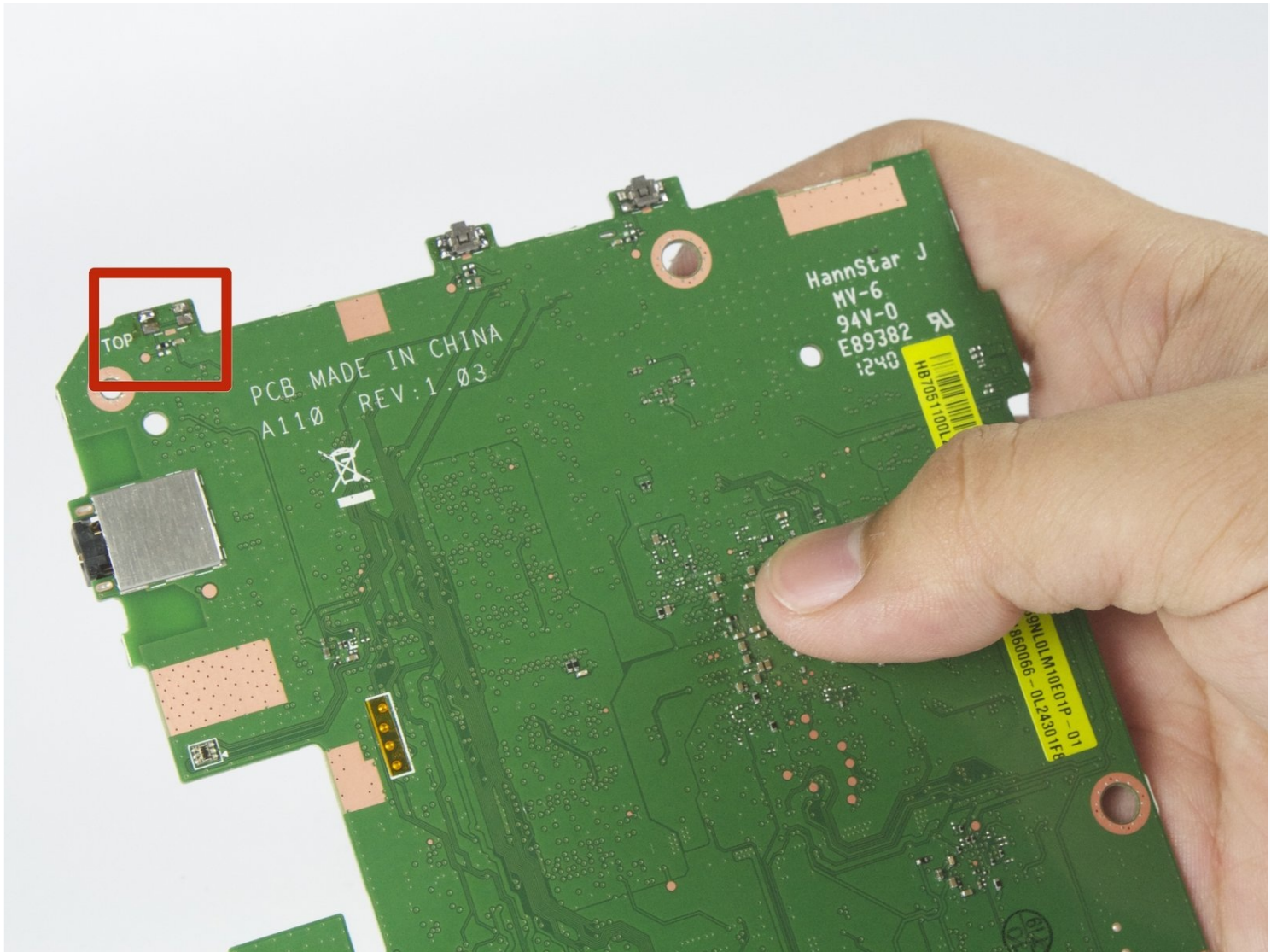


# Acer Iconia A110 On/Off Switch Replacement

Written By: Andrea



---

## TOOLS:

iFixit Opening Tool (1)

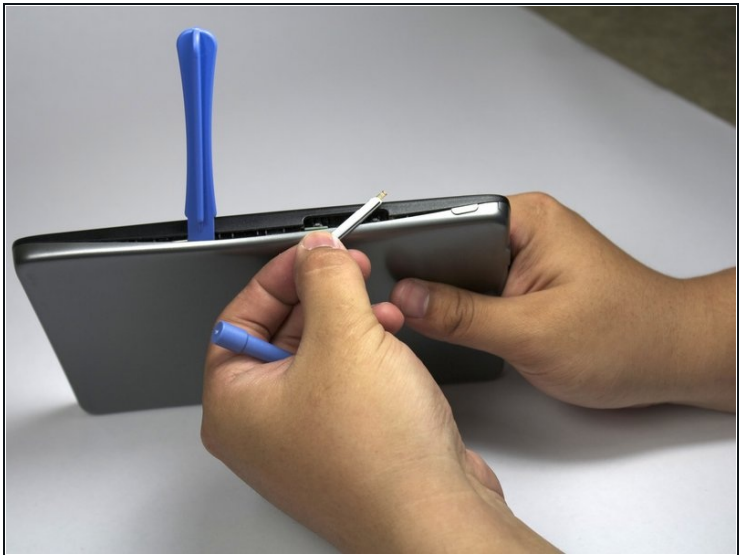
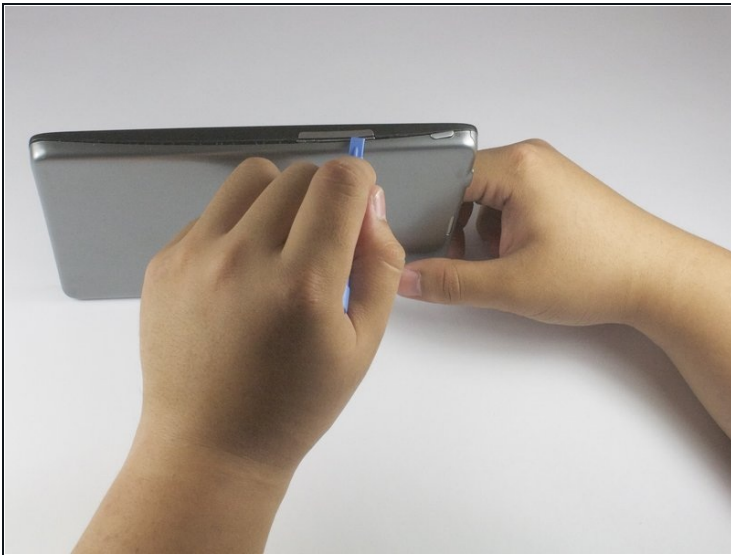
Spudger (1)

Phillips #00 Screwdriver (1)

Tweezers (1)

---

### Step 1 — Battery



 Before taking apart your tablet, make sure the device is powered off.

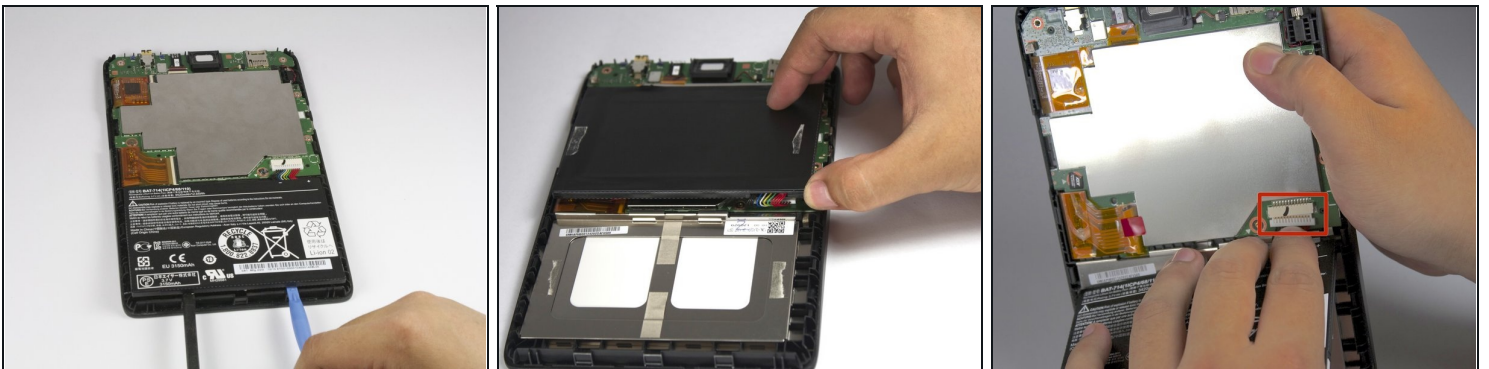
- Pry open the right side of case with the plastic opening tool. If necessary, keep a tool lodged into the side to keep the case from closing.
- ⓘ During this process, the volume button and/or power button may fall out.

## Step 2



- Pry open the left side of the case with a plastic opening tool. The backside of the tablet should now separate completely from the front.

## Step 3



- Using the plastic opening tool and spudger, carefully pry up the battery from the case.
- ⓘ You should hear the adhesive ripping as you do this.
- Once the battery is no longer adhered to the case, detach the dongle that connects the battery to the motherboard.

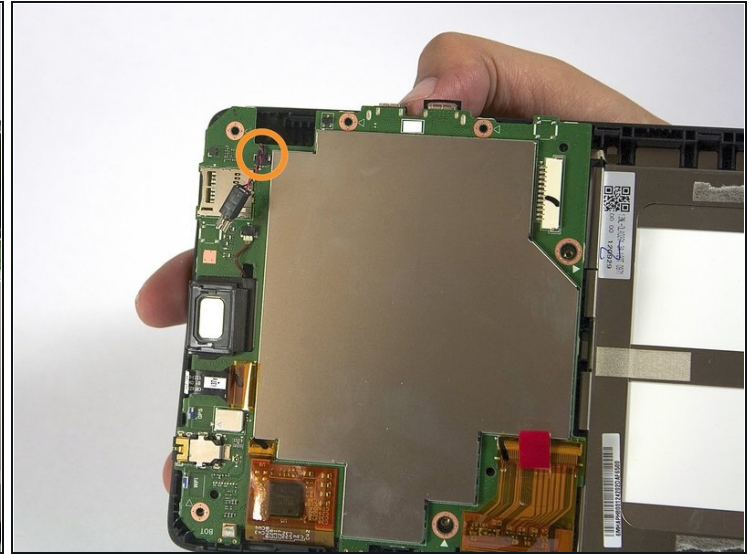
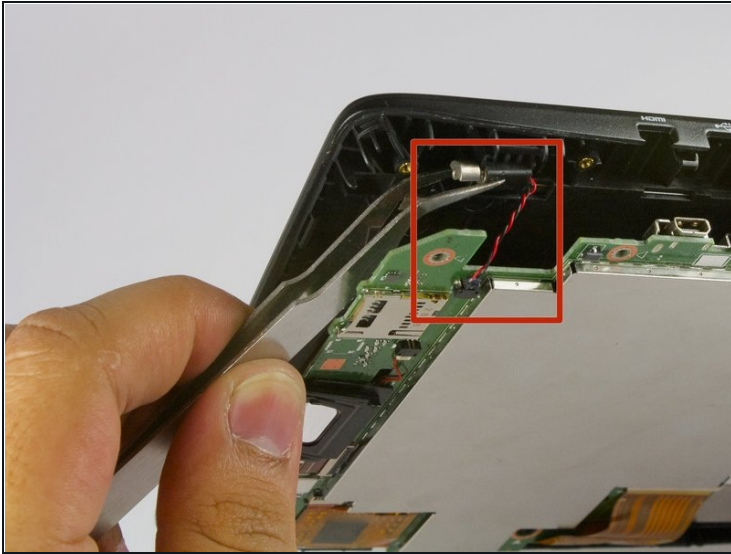
## Step 4 — Speaker



- With the Phillips #00 screwdriver, remove the following screws securing the motherboard to the back panel:
  - Two 2.0 mm screws (with the bigger head)
  - Four 2.5 mm screws (with the smaller head)

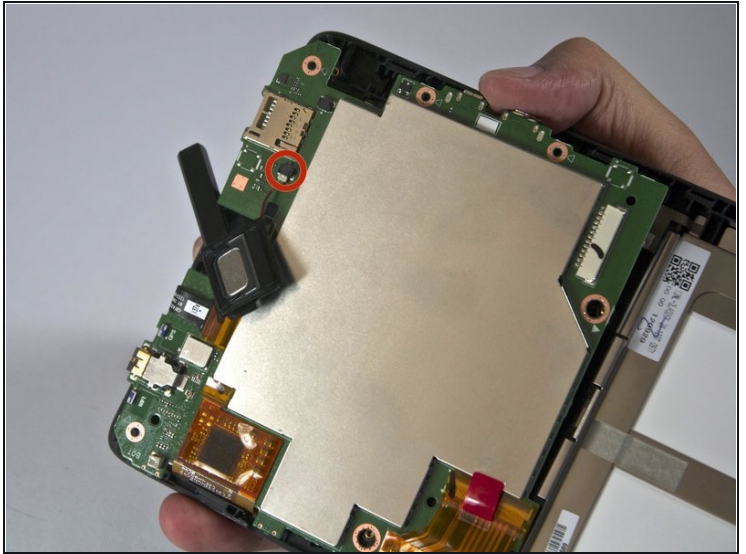
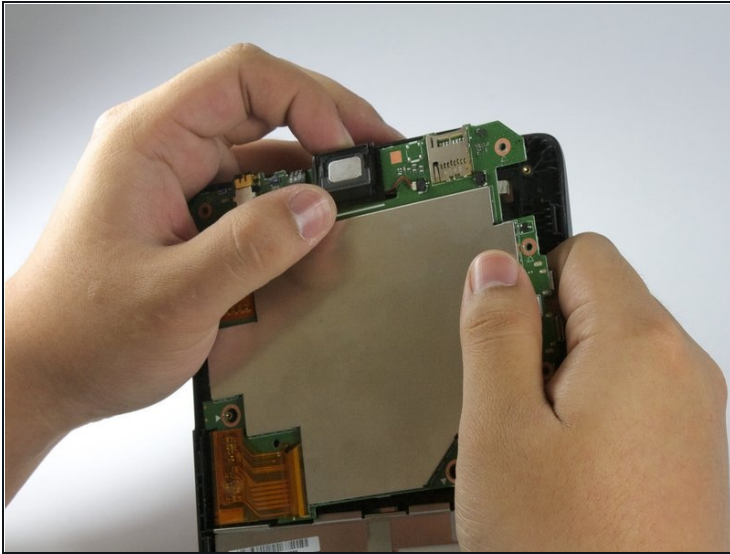


## Step 5



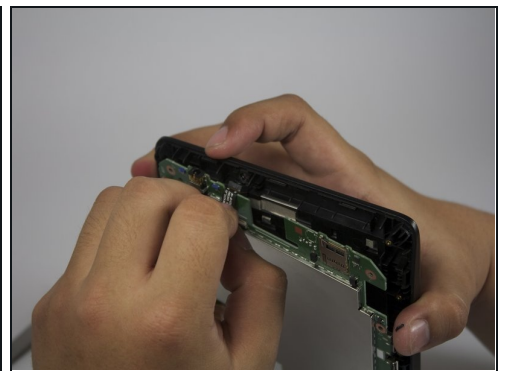
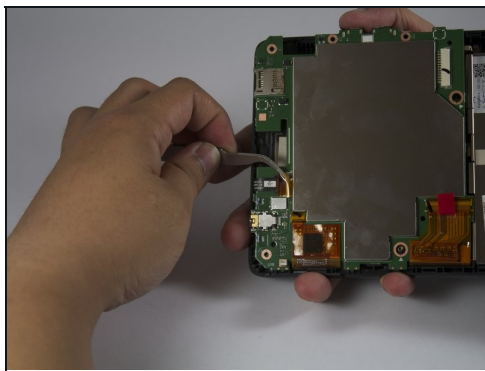
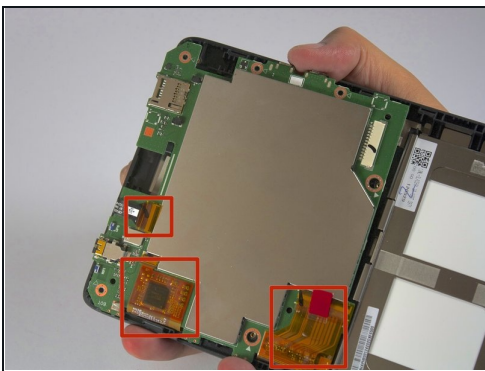
- On the top right side of the motherboard, is the vibration motor. With [tweezers](#), carefully pull the vibration motor out from underneath the motherboard.
- ⚠ The vibration motor is still connected to the motherboard by a small wire connection, so be careful not to rip the wire out.
- With your fingers, carefully disconnect the cable securing the vibration motor to the motherboard. Set aside.

## Step 6



- The speaker located on the top of the motherboard should easily slide out. Take note that there is still a wire connected, so do so carefully.
- With your fingers, slowly pull out the wire connecting the speaker to the motherboard.

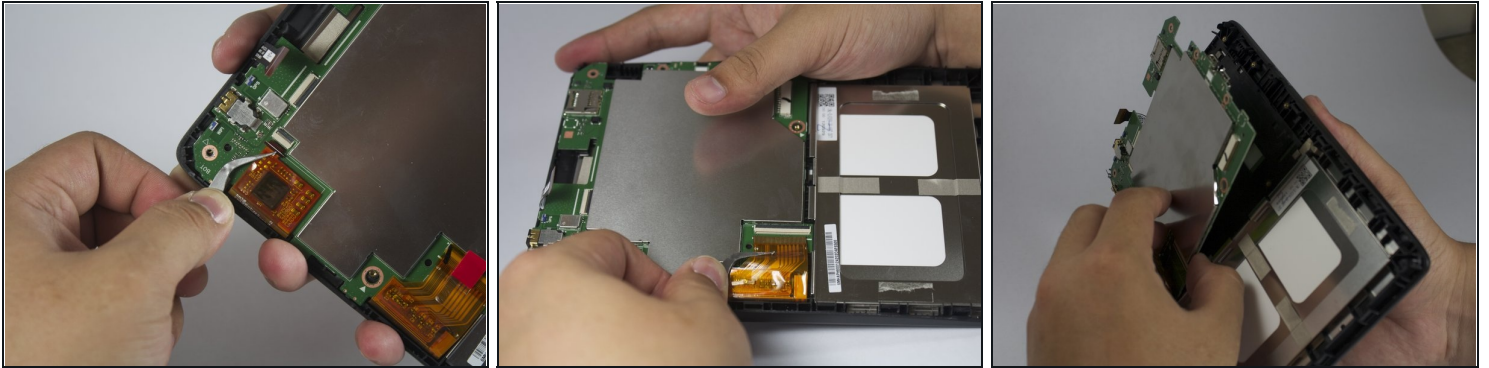
## Step 7 — Motherboard



- The next step is to pull out the ribbon cables connected to the motherboard.
- Each ribbon cable has a sticker covering it; peel it off with [tweezers](#).
- Use tweezers to pull out the ribbon cable.

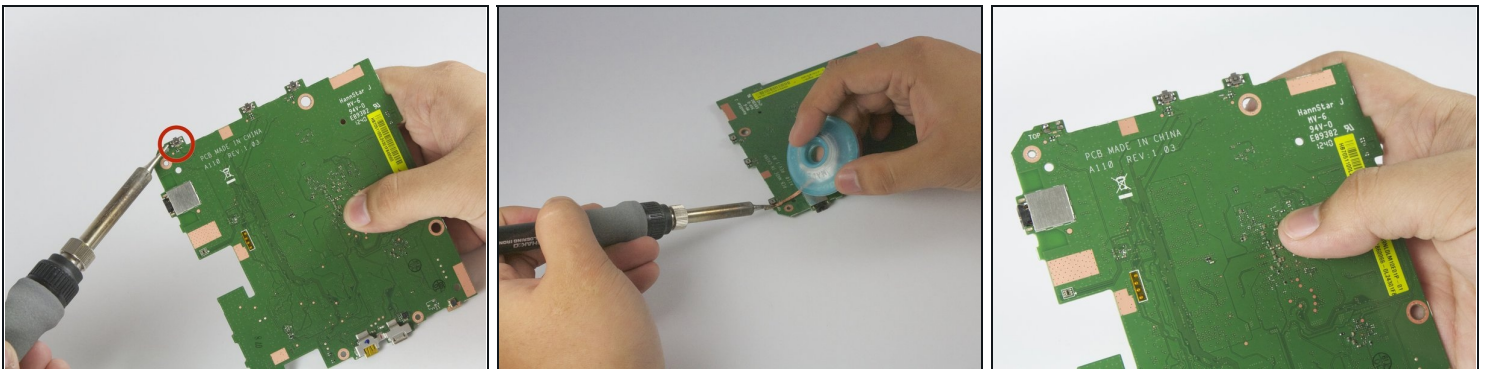
⚠ Make sure to pull the ribbon cable horizontally, not vertically to avoid tearing the ribbon

## Step 8



- After all ribbon cables are disconnected, move them out of the way, and the motherboard should fall out easily.

## Step 9 — On/Off Switch



- After the motherboard is removed, the buttons are visible on the side.

⚠ If you do not have soldering experience, STOP HERE. View [this link](#) for an ifixit soldering guide.

- Use a soldering iron and a soldering wick to desolder the button. This could be tough due to the lead free solder used in the manufacturing process.

---

To reassemble your device, follow these instructions in reverse order.