



Power and 3.5 mm Audio Adapter Jacks Replacement

This guide describes the process of replacing the Power and 3.5 mm Audio Adapter Jacks.

Written By: Jerrell



INTRODUCTION

This guide will show you how to replace the power and 3.5 mm audio adapter jacks on an iHome iP37.



TOOLS:

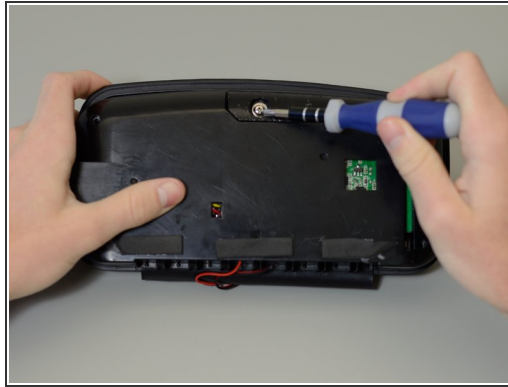
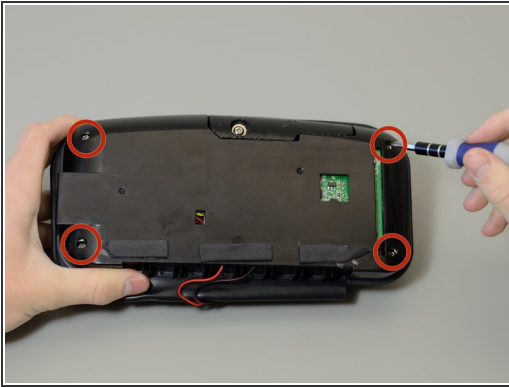
- [Phillips #2 Screwdriver](#) (1)
 - [Phillips #1 Screwdriver](#) (1)
-

Step 1 — Exterior Housing



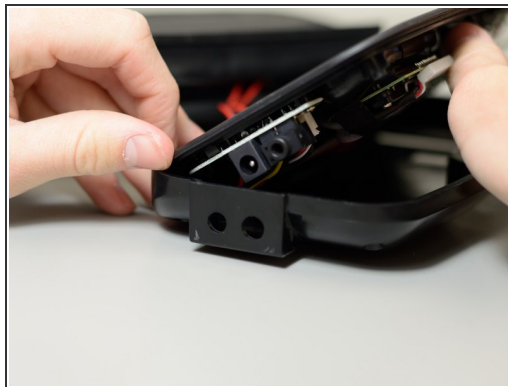
- Pry the exterior housing off the iHome iP37. You may need extra leverage to do this.
- ⓘ Note: This step is the most difficult due to the way it is attached. The glue holding the exterior housing to the internals does not break easily. You may want to use iFixit's [iOpener](#) to soften the glue.
- ⓘ Note: The process is the same for both the upper half and the lower half. To identify the halves, look for these details: the upper half has a metal grid, and the lower half has buttons. If you are replacing any other components, pry off the lower half.

Step 2 — Lower Half Casing



- Remove these four 9 mm screws from the plastic casing; you will need a Phillips #2 driver to do this.
- Remove the flanged 9 mm screw from the counterweight; you will need a Phillips #2 driver to do this.
- Lift and remove the counterweight.

Step 3



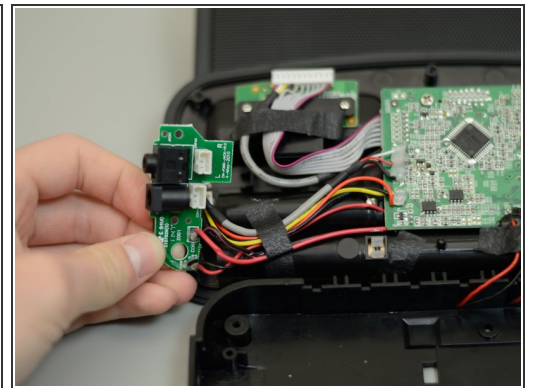
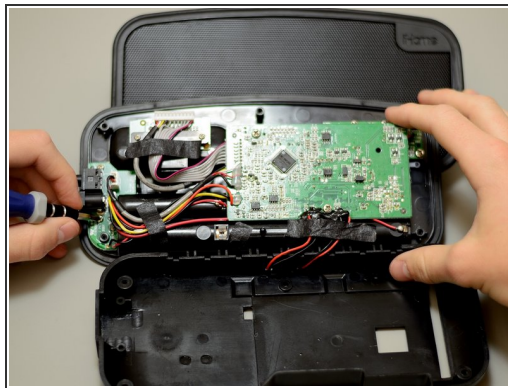
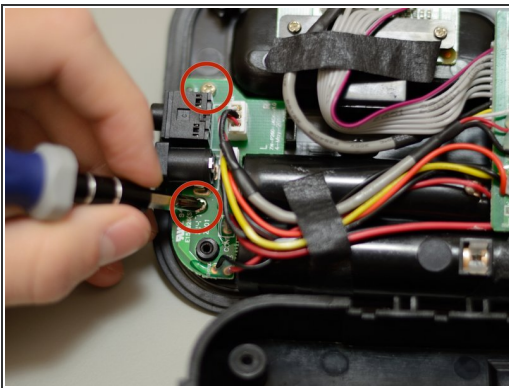
- Lift and remove the plastic casing.
- i** Note: It is best to lift the casing starting from the side without the protruding 3.5mm audio port and power port.
- ⚠** Reminder: During this process, a rubber cover will likely be dislodged. Make sure to re-seat this cover on the small pegs before putting the plastic casing back on.

Step 4 — Power and 3.5 mm Audio Adapter Jacks



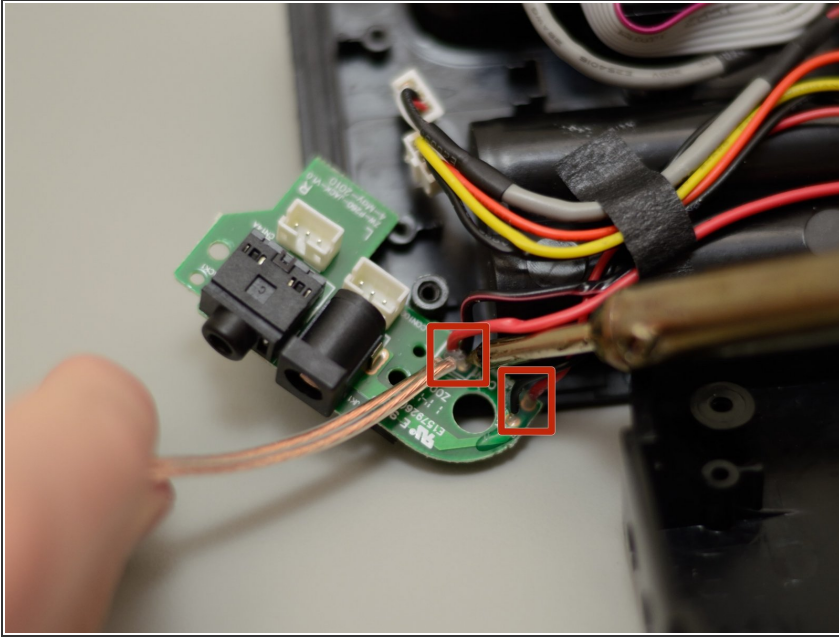
- Firmly and cautiously unplug the two white 3-pin connectors from the printed circuit board.

Step 5



- Remove the two 5mm screws holding the power and 3.5mm jack PCB onto the rest of the device; you will need a Phillips #1 driver to do this.
- Lift the PCB away from the rest of the device.

Step 6



- Desolder the two black and two red cables from the board.
- ★ These wires will need to be soldered to the replacement board when reassembling the device.
- ⓘ You can refer to [iFixit's guide](#) or [this informative video](#) for more information on soldering.

To reassemble your device, follow these instructions in reverse order.