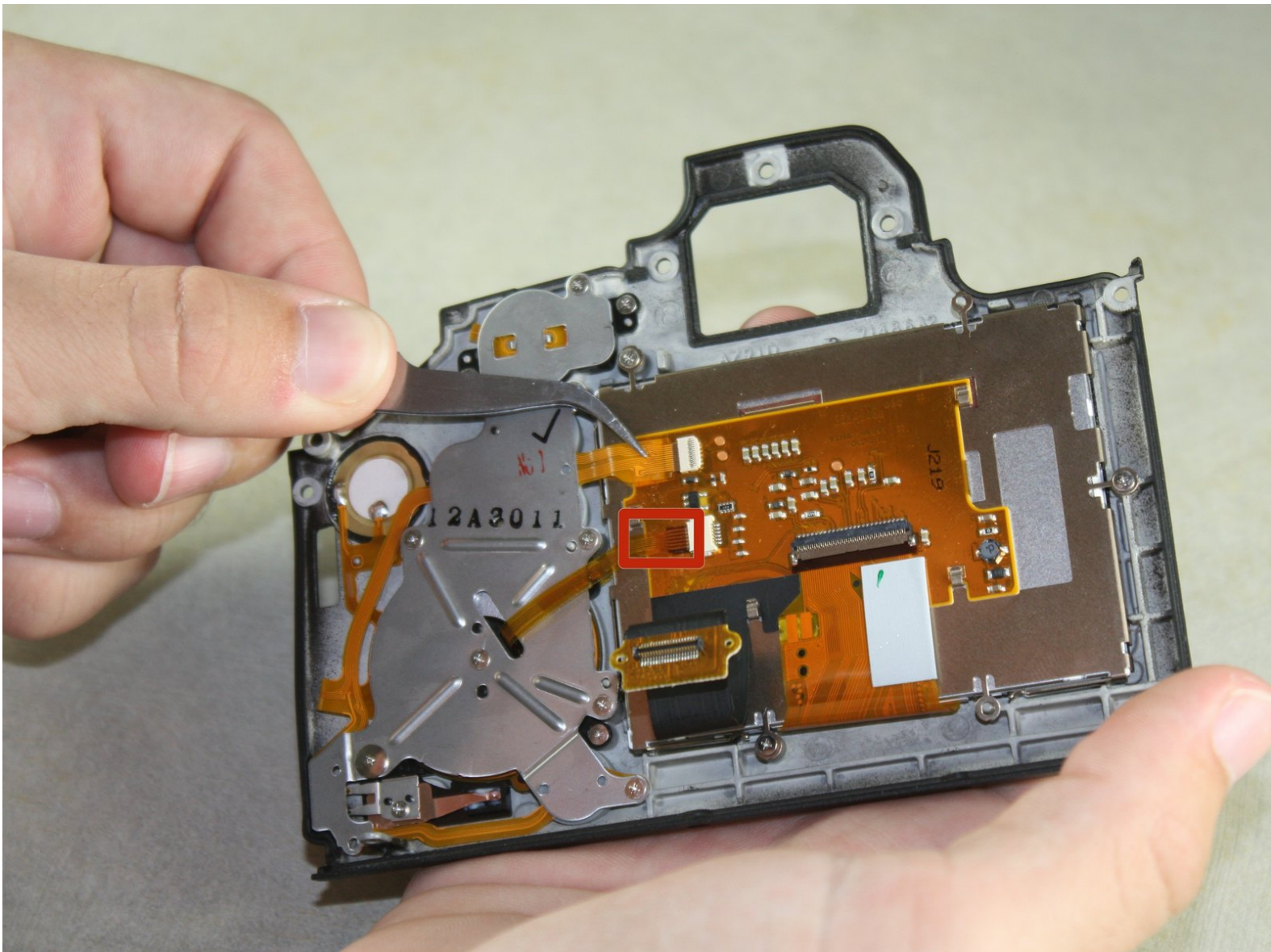




# Canon EOS 6D Rear LCD Screen Replacement

Replace the rear LCD screen on the EOS 6D.

Written By: Justin Thomas



---

## INTRODUCTION

Use this guide to replace a cracked or malfunctioning rear LCD screen on your EOS 6D.

---



### TOOLS:

- [Phillips #00 Screwdriver](#) (1)
  - [Spudger](#) (1)
  - [Tweezers](#) (1)
-

## Step 1 — Rear Body Panel



- Remove the viewfinder cover by pinching the sides and sliding it upward.

## Step 2



- Open the battery door on the bottom of the camera.
- Use your thumb to slide the small black tab on the inside of the battery door up and pull the door off the camera.



### Step 3



- Slide your fingernail or the flat end of the spudger underneath the rubber covering and gently peel it off all sides of the camera.

### Step 4



- Open the covers to the HDMI/AV/MIC ports on the side of the camera by gently pulling outward on the bottom of the covers.
- Rotate the covers to the side so that you can see the connection ports inside.
- Remove the following screws:
  - Two silver 5mm Phillips #00
  - One black 6mm Phillips #00

## Step 5



- Remove the cover to the HDMI/AV/MIC ports by gently lifting the tab on the bottom edge of the camera.

## Step 6



- Rotate your camera so the bottom side is facing you.
- Remove the following screws:
  - One 6mm Phillips #00
  - Two 3mm Phillips #00

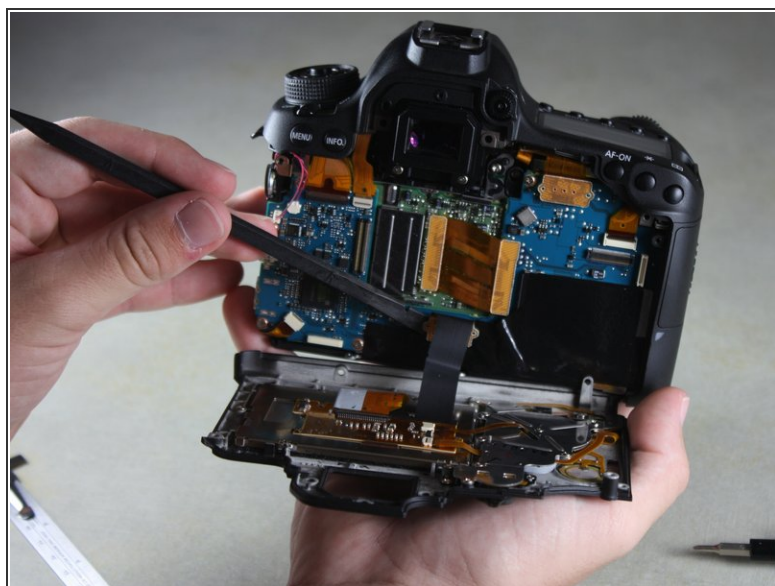



## Step 7



- Rotate your camera so the back is facing you.
- Remove the following screws:
  - Three silver 5mm Phillips #00
  - Two black 6mm Phillips #00
  - One black 4mm Phillips #00

## Step 8

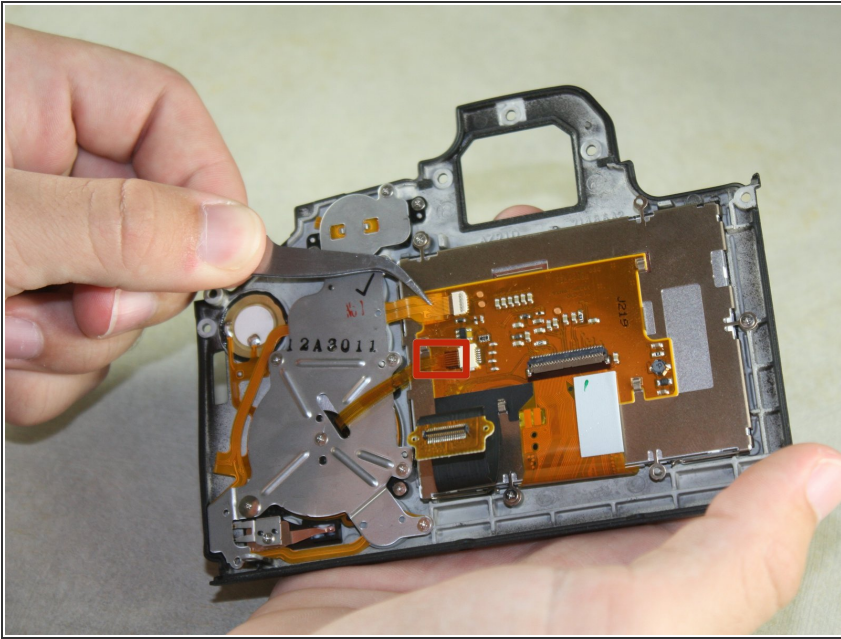


 A black ribbon wire connects the rear panel to the inside of the camera. Breaking this wire would make your rear screen and buttons non-functional.

- Carefully use your fingers to tilt the back panel downward to about a 90 degree angle.
- Use the flat end of the spudger to gently pry off the ribbon wire from the inside of the camera.

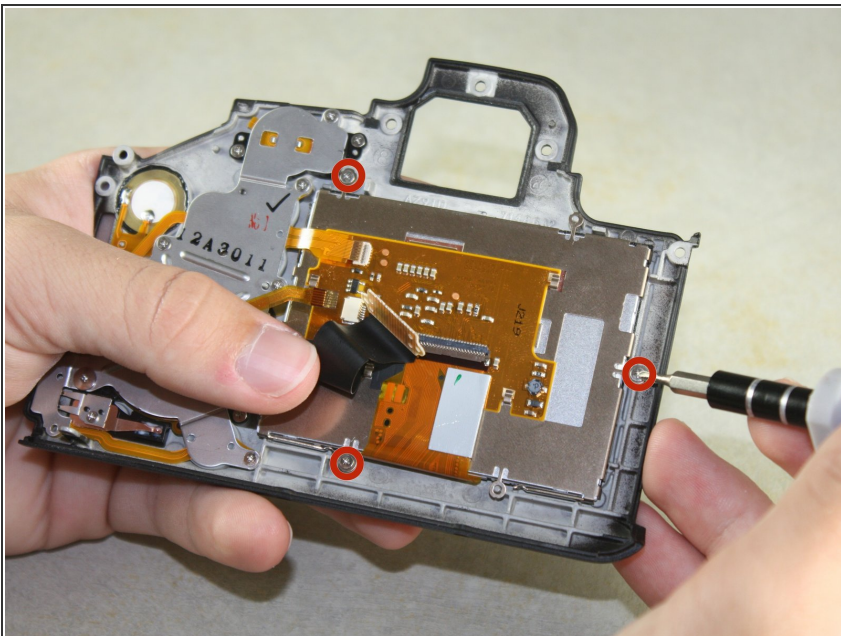
This document was generated on 2020-11-28 03:18:44 AM (MST).

## Step 9 — Rear LCD Screen



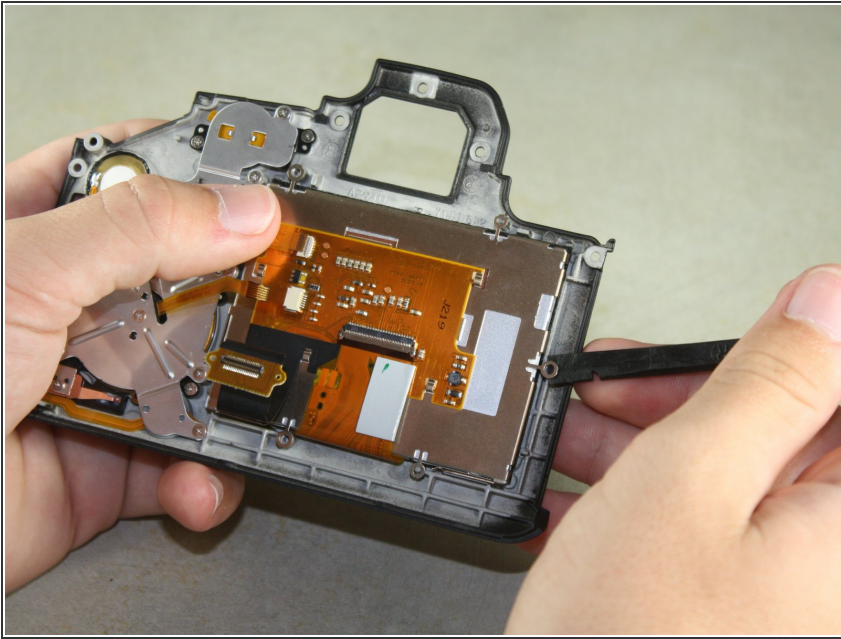
- Detach the two light brown ribbon wires from the back of the LCD screen by firmly gripping each with tweezers and gently pulling straight to the left.

## Step 10



- Remove three 3mm Phillips #00 screws from the inside of the panel.

## Step 11



- Carefully peel the black tape off the upper edge of the screen (not shown).
- Remove the screen by using the flat edge of the spudger to carefully lift the screen assembly off its silver aligning pins.

To reassemble your device, follow these instructions in reverse order.