



Lenovo IdeaTab A2109 System Board Replacement

Use this guide to replace the system board

Written By: Kyle



INTRODUCTION

Use this guide to replace the system board

TOOLS:

[iFixit Opening Tool](#) (1)

[Phillips #00 Screwdriver](#) (1)

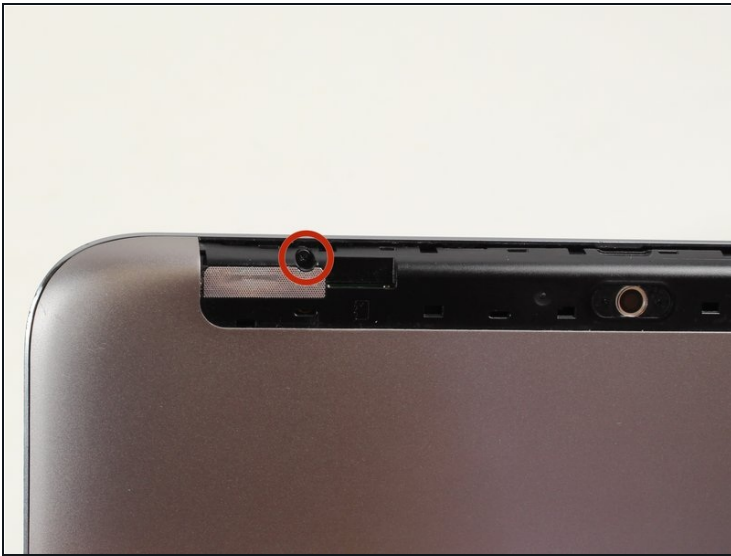
[Tweezers](#) (1)

Step 1 — Battery



- Look at the back of the tablet and locate the speakers on top of the rear cover.
- There is a smaller indentation in the plastic cover that runs across the top of the device.
- Wedge the plastic opening tool, under the middle of the cover as shown, then push up and the cover will pop off.

Step 2



⚠ Remove SD card if present.

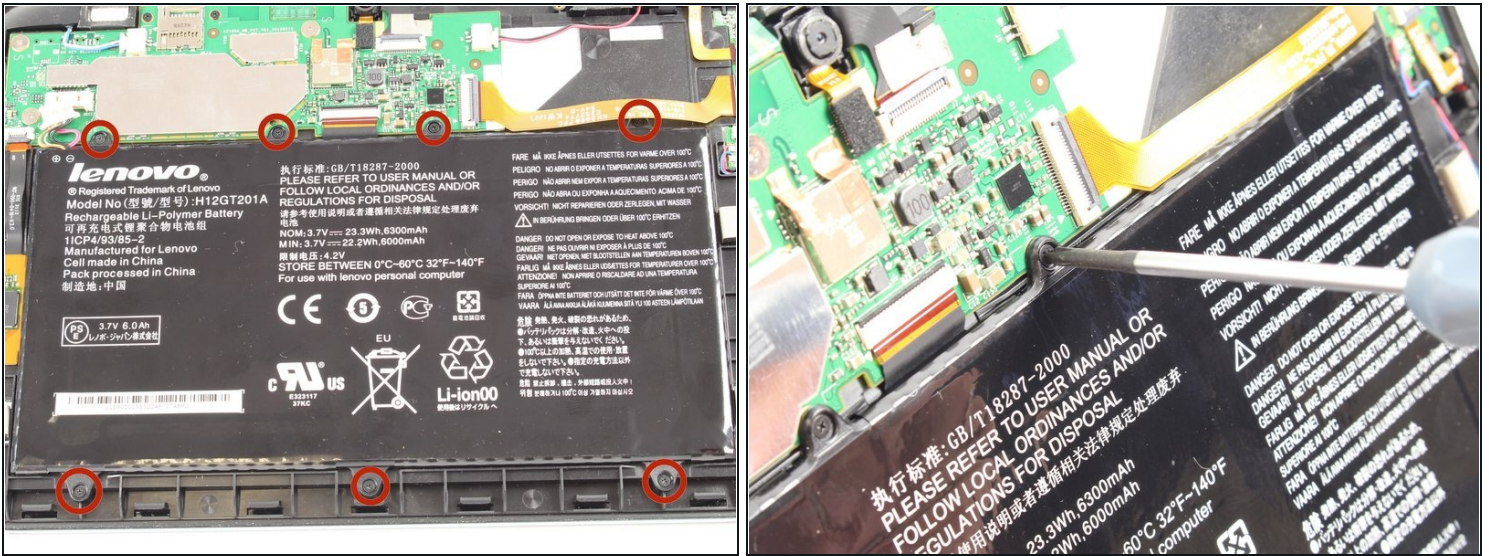
- Remove two black 3mm Phillips #00 screws.

Step 3



- Disconnect battery power connector by pinching the connector with [tweezers](#), and sliding it out of the housing.

Step 4



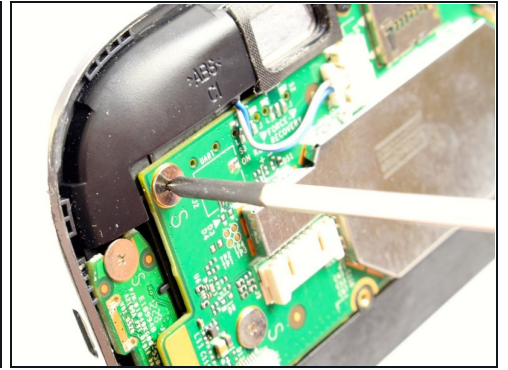
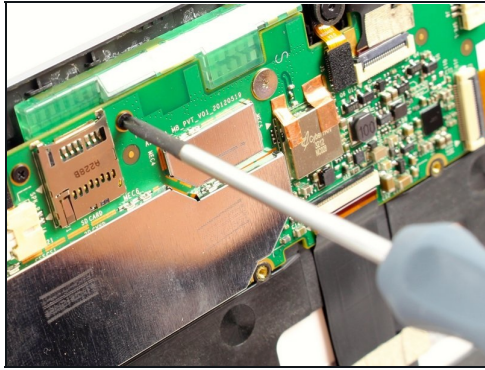
- Remove seven black 3mm Phillips #00 screws.
- ① The top right corner screw is underneath a yellow ribbon. Lift the ribbon up without disconnecting it and unscrew the screw.

Step 5



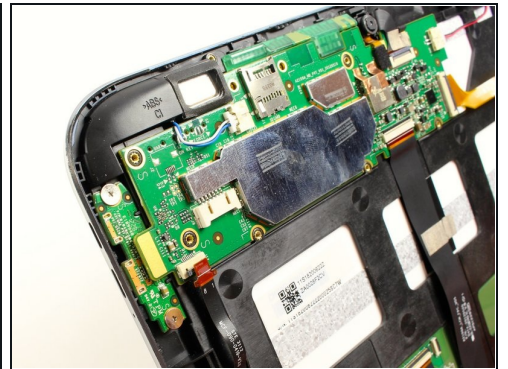
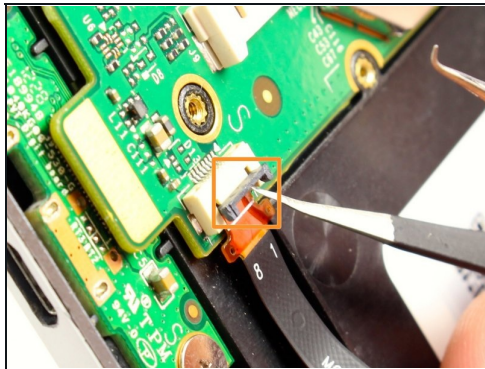
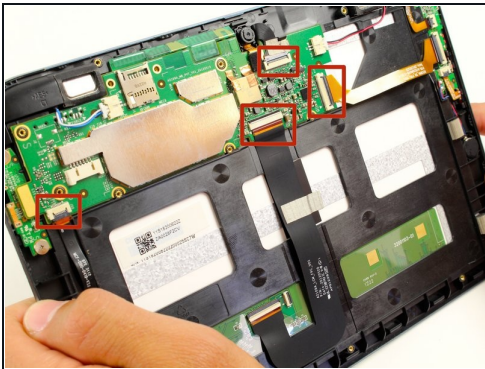
- Now you can take the battery out in order to either replace it or continue disassembling the device.

Step 6 — System Board



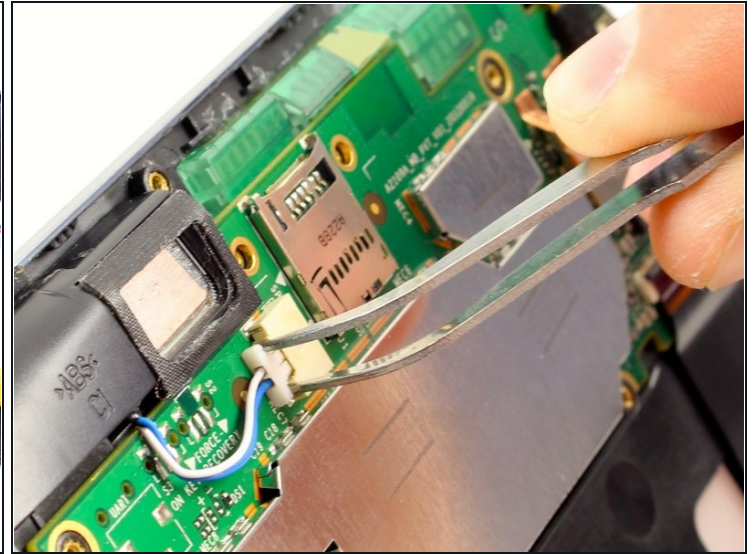
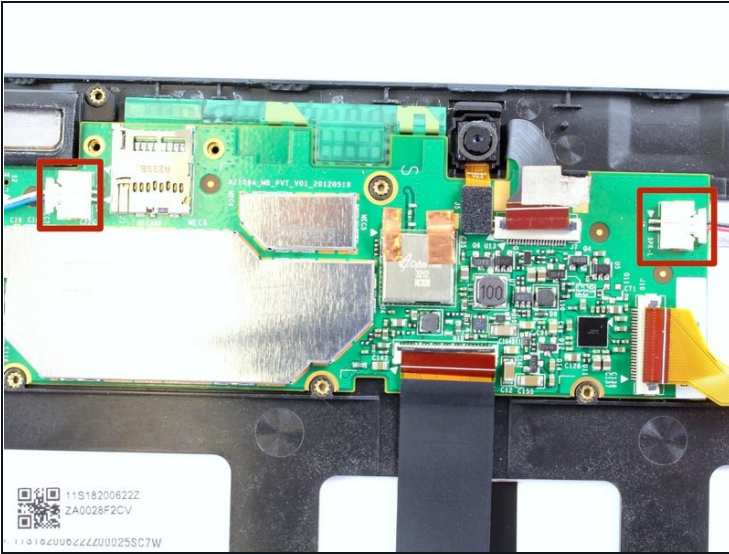
- Remove two black 3mm Phillips #00 screws.
- Remove three silver 1.8 mm Phillips #00 screws.

Step 7



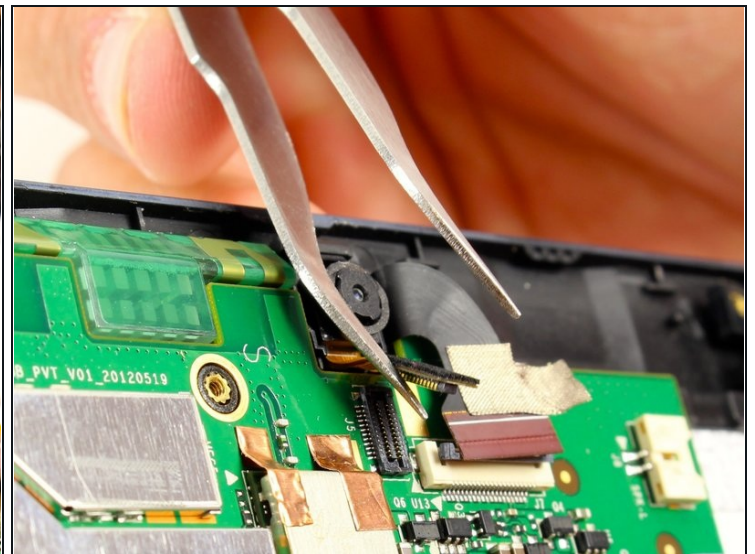
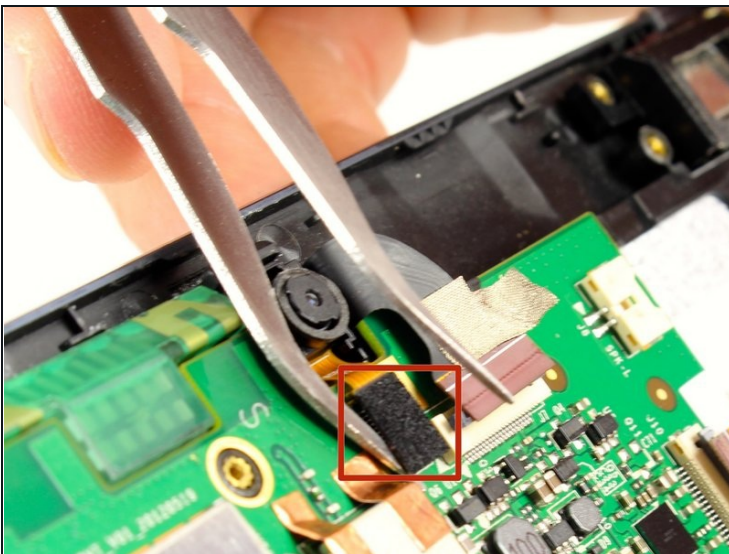
- Use [tweezers](#) to flip up the small black plastic locks on all four connections.
- Carefully remove each of the exposed ribbons.

Step 8



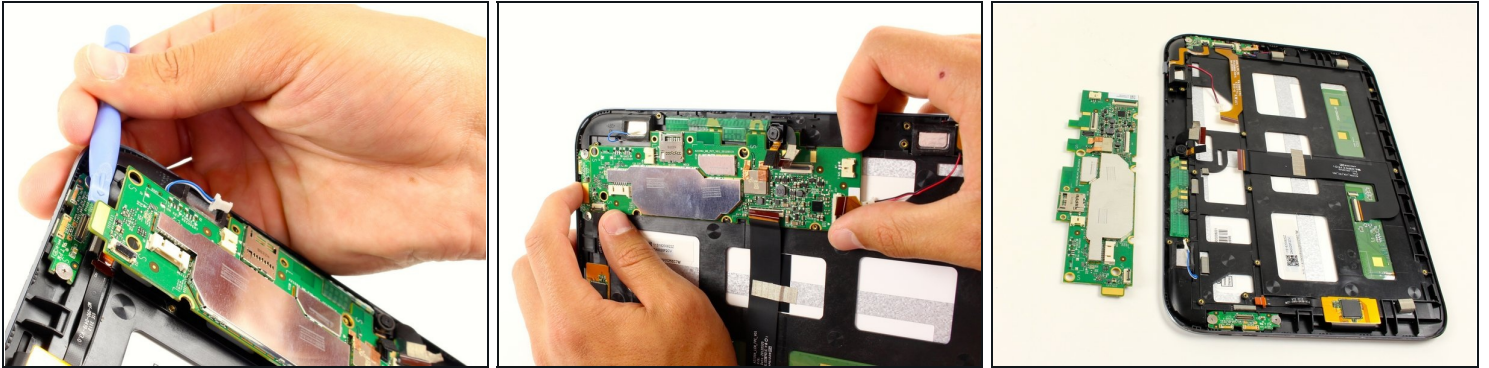
- Disconnect the two speaker connectors by pinching them with tweezers and sliding them out from the system board housing.

Step 9



- Use tweezers or your finger nail to disconnect the camera attachment by flipping up the black rectangular connector.

Step 10



- Disconnect the HDMI connection with the system board
- Use a plastic opening tool to pry up the system board, and you will hear a pop as it comes free.
- Slide out the system board from its housing tab on the upper right corner.
- Pull the board slowly away from the tab, and it will pop out.

To reassemble your device, follow these instructions in reverse order.