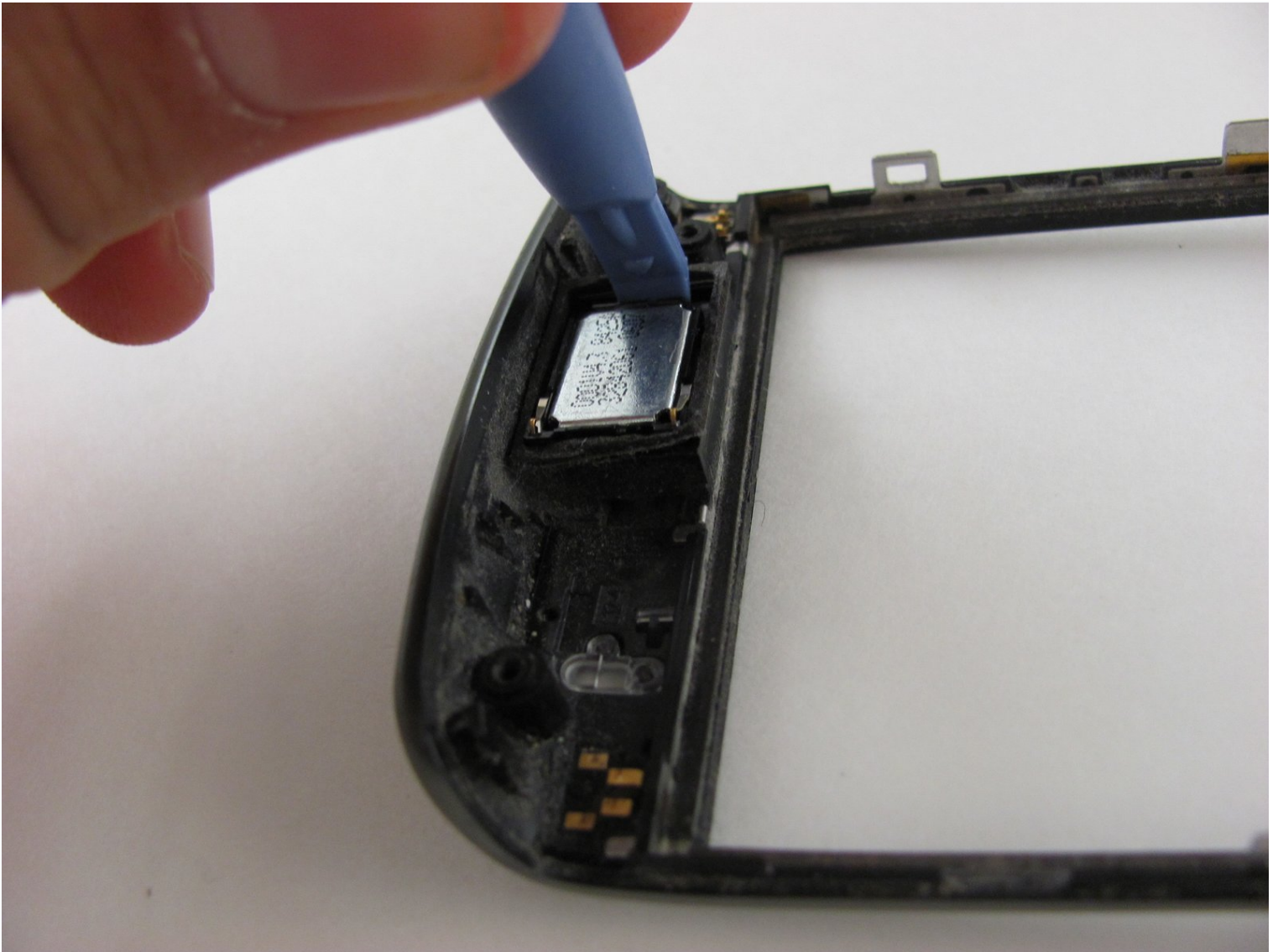




# Blackberry Storm 9530 Ear Speaker Replacement

The ear speaker is located in the top right...

Written By: Kye Miranda



# INTRODUCTION

The ear speaker is located in the top right corner of the front panel. Sometimes these speakers break or blow out due to excessive use. This guide will instruct you on how to access, remove, and replace this speakers.

---

## TOOLS:

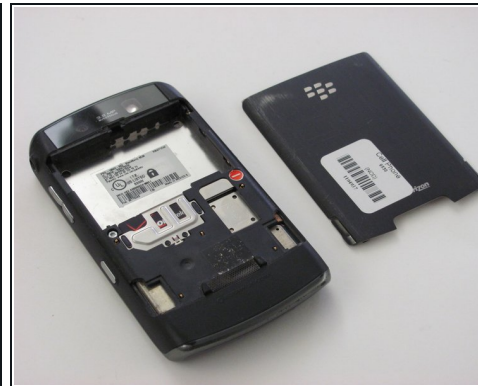
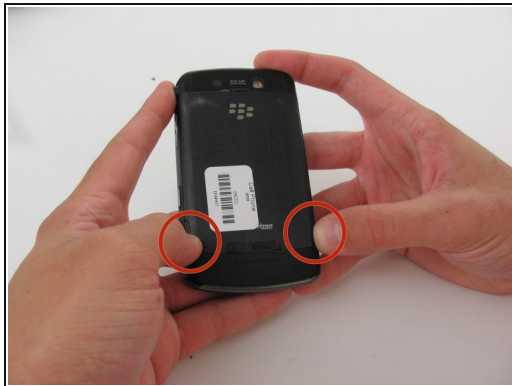
[iFixit Opening Tool](#) (1)

[Spudger](#) (1)

[T6 Torx Screwdriver](#) (1)

---

## Step 1 — Back Cover Removal



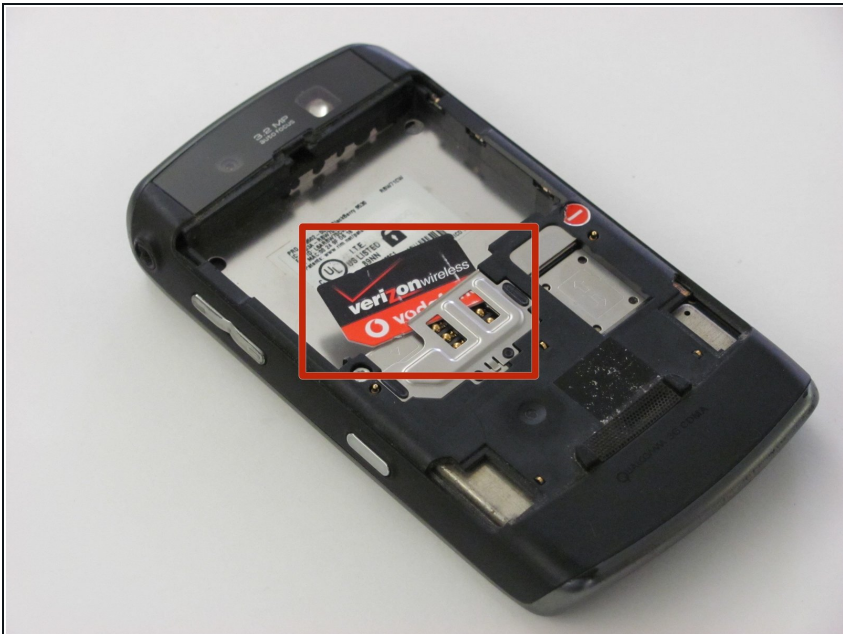
- Locate the two switches toward the bottom corners of the device's back cover.
- Use your thumbs or fingers to push the two switches forward at the same time and detach the back cover from the device.
- Check to make sure the back cover has fully detached from the device. You should be left with two separate pieces: the back cover, and the device with exposed internal hardware.

## Step 2



- Identify that the battery is visible once the back cover has been removed, and locate the battery in the rectangular-shaped top half of the device.
- Pry apart the battery and back of the device using the flat end of your spudger tool or using your finger if you do not have a spudger.
- ⓘ Your battery has a specific orientation resembling a horizontal rectangle. Make sure the gold colored leads are aligned with the gold colored strips on your battery before reassembling.

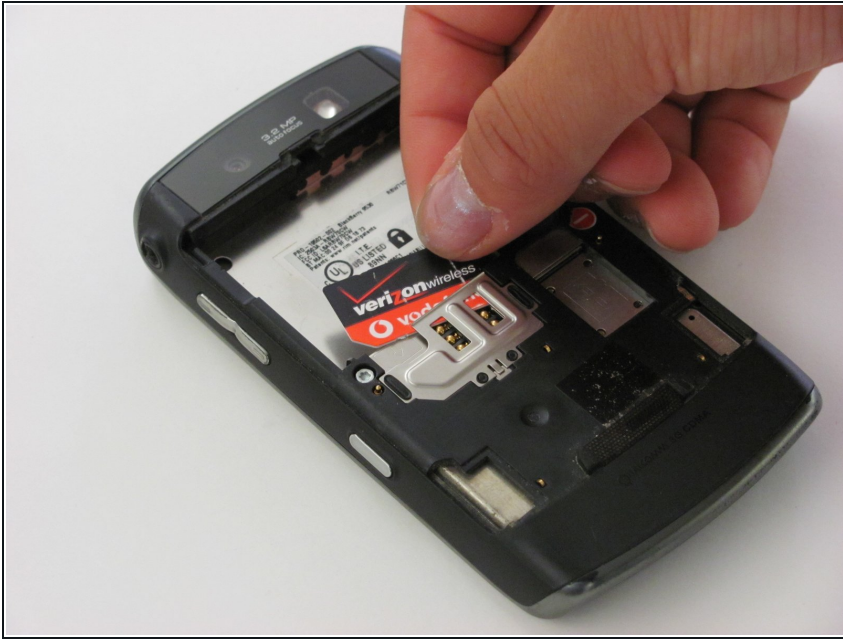
## Step 3 — SIM Card



- Locate the SIM card once the battery has been removed. The SIM card is typically located in the center of the phone, and it is secured by a metal tray.



## Step 4



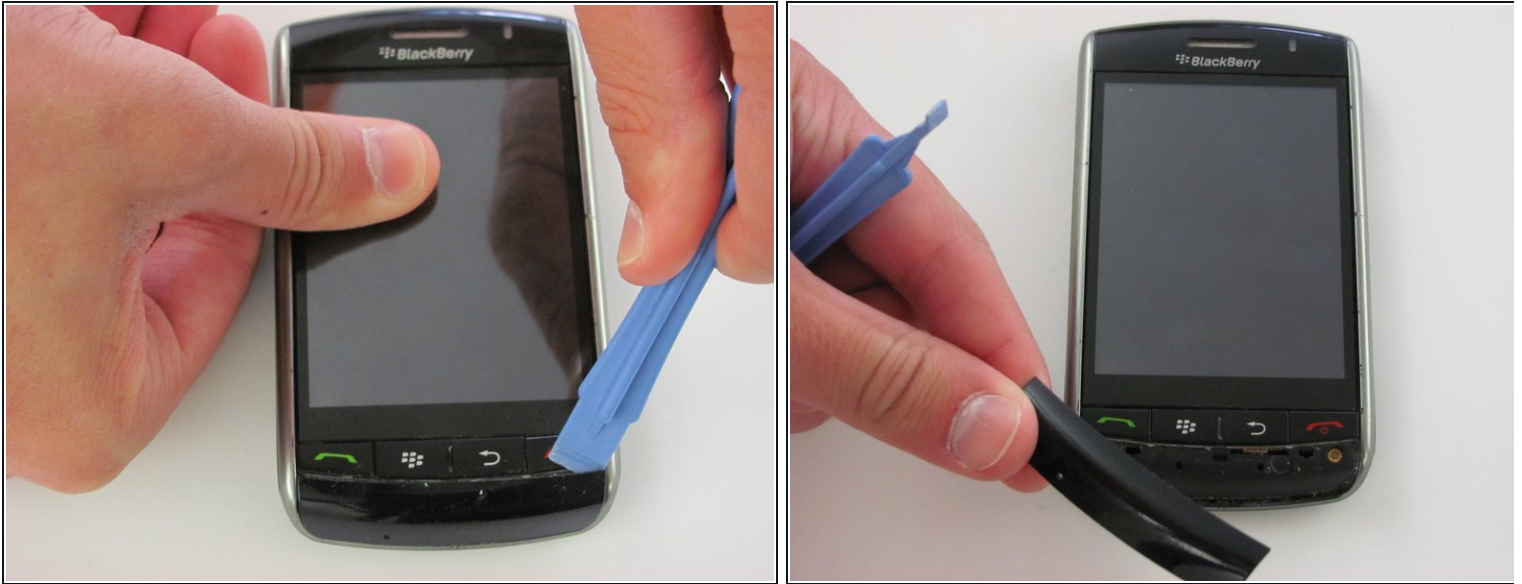
- Remove the SIM card carefully by sliding it upwards out of the metal tray. No tools are needed for this step.
- ❗ Your SIM card has a specific orientation to follow when it is replaced. Make sure the gold colored leads are aligned with the gold colored strips in the SIM card tray before reassembling.

## Step 5 — Back Speaker



- Place the opening tool underneath the camera lens' protective plastic cover and pry them apart with gentle force.
- Make sure the plastic cover has been fully removed by carefully lifting it away from the device with your fingers.

## Step 6



- Flip the device so that the touchscreen and BlackBerry logo is facing you.
- Place the opening tool underneath the front plastic cover located below the buttons with red and green phone symbols.
- Lift and remove the plastic cover once the opening tool is in place. Make sure the plastic cover can be fully detached from the rest of the device.

## Step 7



- Remove the two bronze Torx T6 3 mm screws below the red and green phone symbols.

## Step 8



- Remove the four silver Torx T6 3 mm screws on the back of the device.

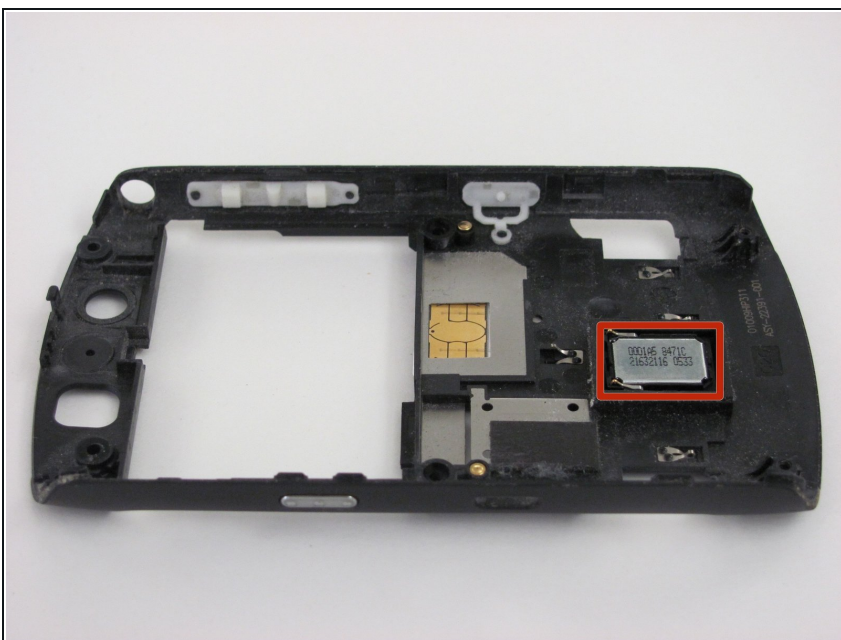


## Step 9



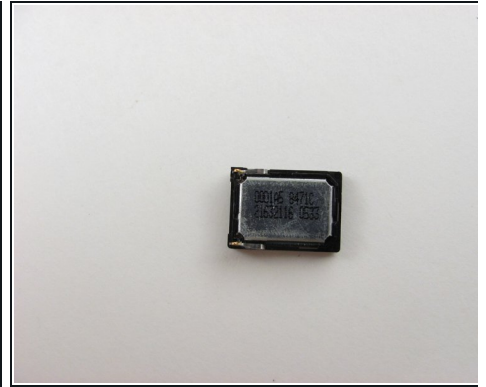
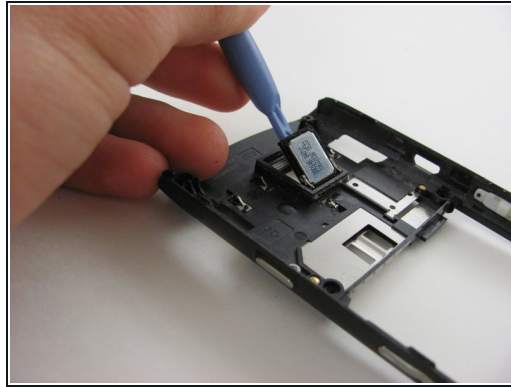
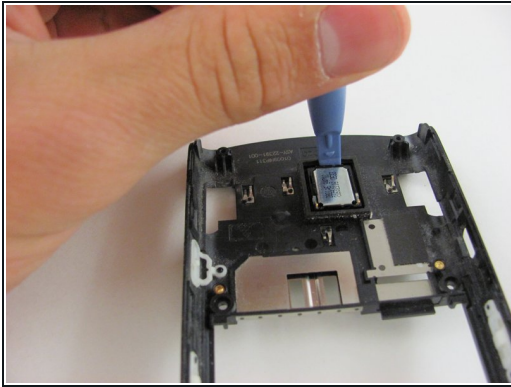
- Pry the opening tool into the slit between the two plastic sides of the device to separate the back panel from the front panel.
- Slide the opening tool across the slit until you are left with two, separated front and back panels.

## Step 10



- Locate the silver speaker marked with numbers and letters on the back panel of the device.

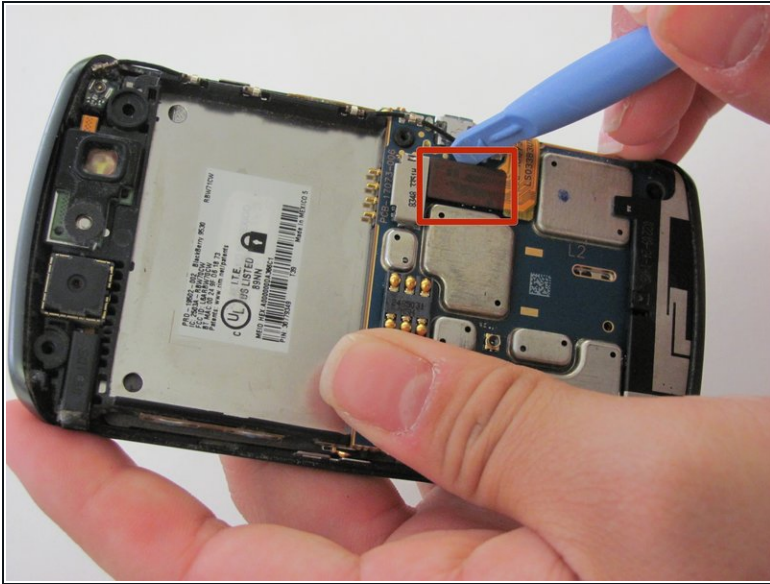
## Step 11



- Place the opening tool underneath the silver speaker component.
  - Use the opening tool to lift the speaker off of the panel with light force.
  - Set the speaker aside once it has been fully removed.
- ☒ When removing speakers, replacing or re-inserting them may result in looseness. This means that during re-assembly they may fall out or shift. An adhesive may be necessary to keep the speaker in place.



## Step 12 — Motherboard



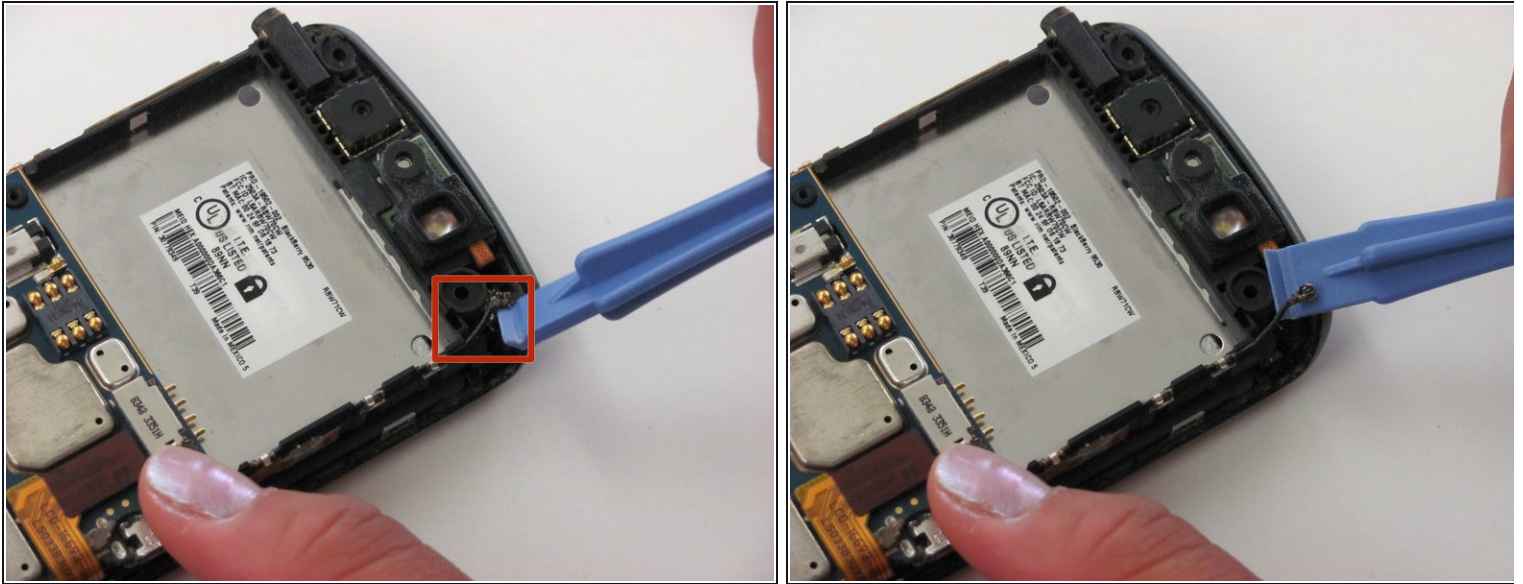
- Locate the red tabbed pin strip connected to the motherboard. The red tabbed pin strip is located on the right-hand side of the back of the phone.
- Disconnect the red tabbed pin strip from the motherboard by inserting the opening tool under the side of the tab and gently pulling upwards toward you.

## Step 13



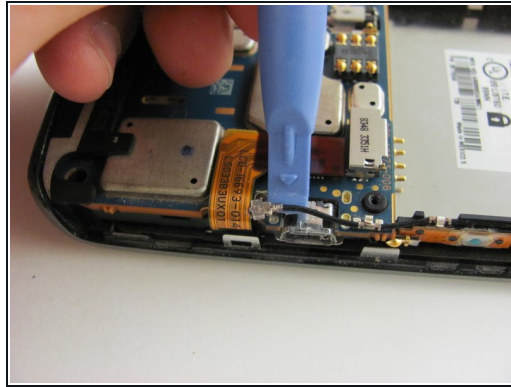
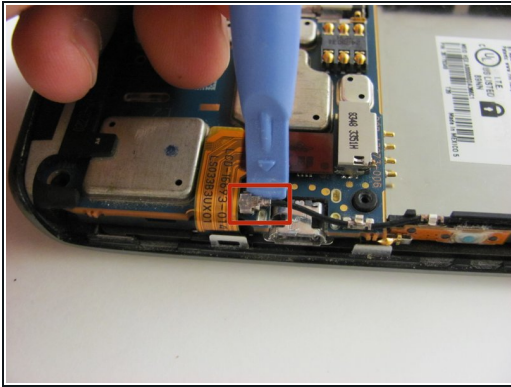
- Locate the yellow tabbed pin strip which is directly next to the original location of the red tabbed pin strip.
- Disconnect the yellow tabbed pin strip from the motherboard using the same technique used to disconnect the red tabbed pin strip in the previous step.

## Step 14



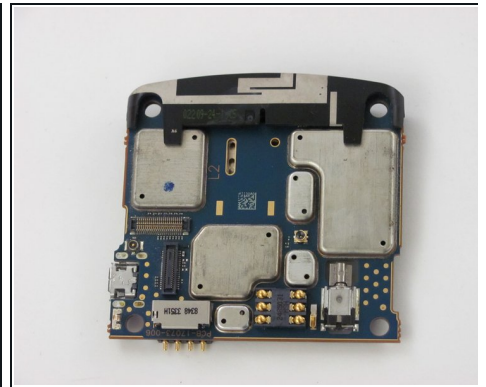
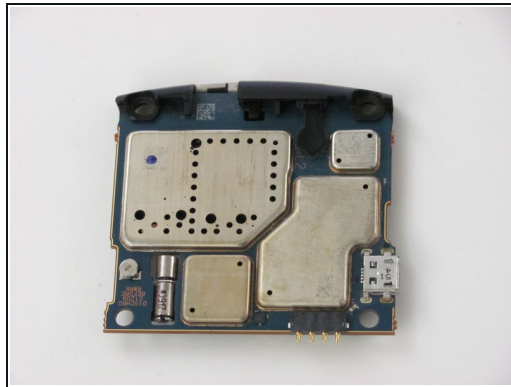
- Disconnect the antenna cable located at the top right corner of the black panel using the opening tool.
- Insert the opening tool underneath the side of the antenna connection, and gently pull upwards to disconnect the cable.

## Step 15



- Locate the second antenna connection toward the middle right area of the back panel. It is found in the corner where the red and yellow tabbed pin strips met.
- Remove the antenna connection using the same method done in the previous, top antenna removal step.
- Loosen the bottom metal cable grip (which pins down the cable) to separate the antenna from the motherboard entirely.

## Step 16



- Remove the entire motherboard now that all the components holding it down have been removed or disconnected.
- Grip the top right edge of the motherboard with your fingers and remove it by pulling it out gently.



## Step 17 — Screen Button



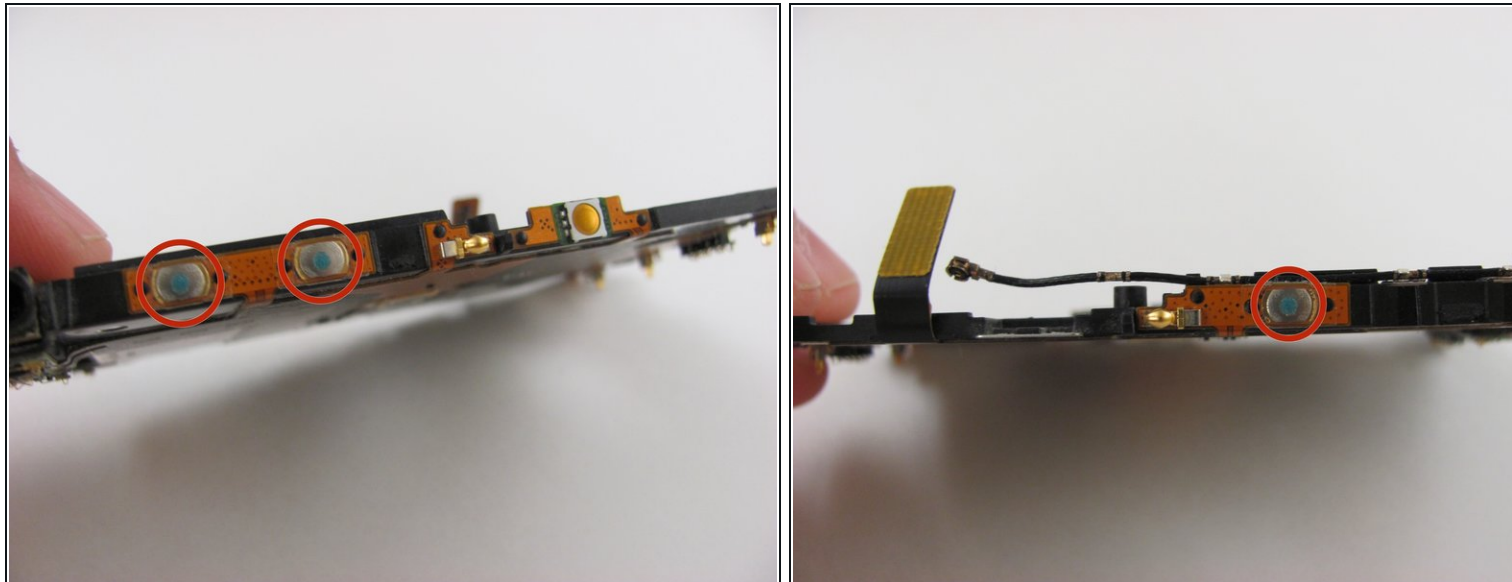
- Hold the middle panel and lift it away from the frame to separate the middle button panel from the screen and front frame.
- Set the middle button panel aside after it has been fully separated from the screen.

## Step 18



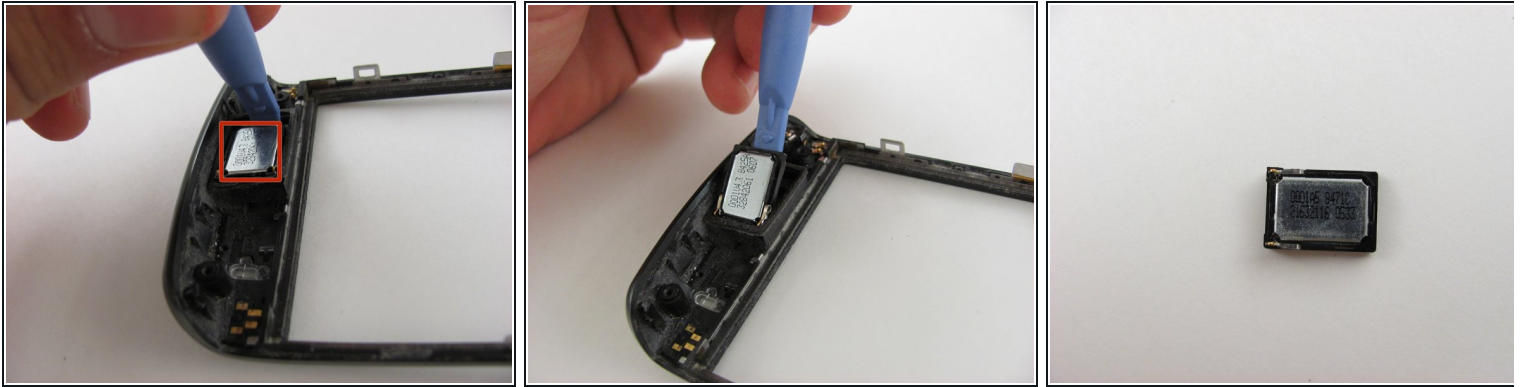
- On the underside of the middle panel is the screen button and accessory parts.
- Replace the circled screen button (if needed) by replacing the entire middle panel.
- ① Contact your plan provider or the phone manufacturer for details on obtaining a new panel.

## Step 19 — Volume Control and Convenience Key Buttons



- Replace the volume control and convenience key buttons by replacing the entire middle panel.
- ⓘ Contact your plan provider or the phone manufacturer for details on obtaining a new panel.

## Step 20 — Ear Speaker



- First locate the speaker in the top right corner of the front panel
  - Next, place your plastic prying tool underneath the speaker and slowly lift.
- i** You may have to be a little forceful with the speaker, because it can sometimes be hard to get out.
- !** When removing speakers, replacing or re-inserting them may result in looseness. This means that during re-assembly they may fall out or shift. Glue may be necessary to keep the speaker in place.

To reassemble your device, follow these instructions in reverse order.