



Nikon D5000 Back Panel Replacement

Prerequisite only.

Written By: Jacob Rardin





TOOLS:

- [Phillips #00 Screwdriver](#) (1)
 - [Tweezers](#) (1)
-

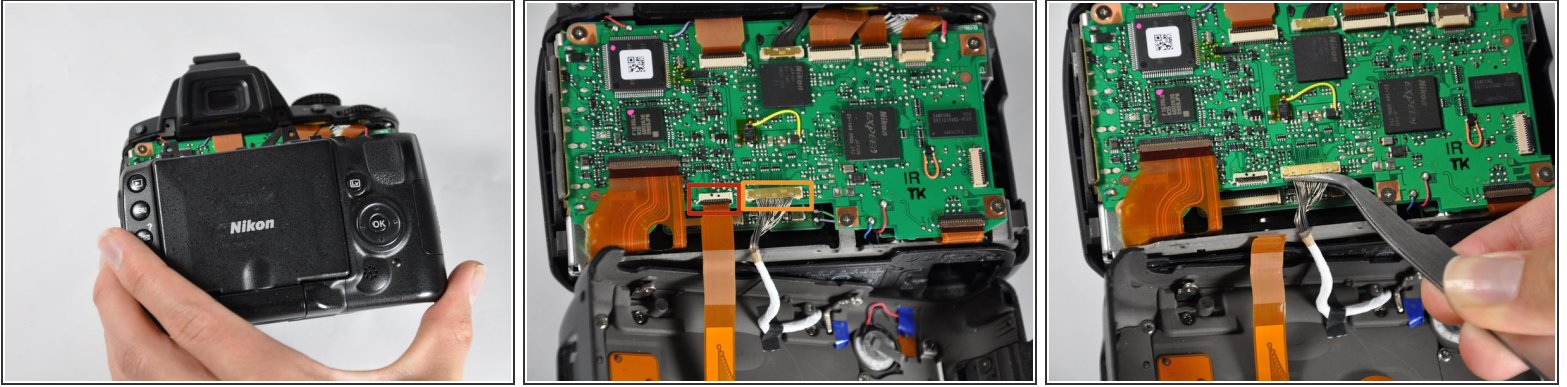
Step 1 — Back Panel



i The battery door has been removed for clarity, but is not necessary. See [this guide](#) for how to remove it.

- Unscrew the eight Phillips #00 screws on the back panel:
 - Two 2.5x6mm screws above the screen.
 - One 3x6mm screw on the upper part of **each** side (two total; right side shown).
 - One 3x7.5mm screw on the lower part of **each** side (two total).
 - Two 3x4.5mm screws on the bottom.

Step 2



- Pull the back panel up, then tilt it back. There will be two cables still holding it on.
 - ⓘ Doing this will also release the connector cover on the left side. Set it aside for now, but remember to reinstall it later.
- Disconnect the ribbon cable by flipping the black tab up, then pulling the cable out.
 - ⓘ This procedure also applies to all of the other ribbon cables in the D5000.
- Pull out the other connector by lifting it up with tweezers, or by prying it out. Fingernails also work well.

To reassemble your device, follow these instructions in reverse order.