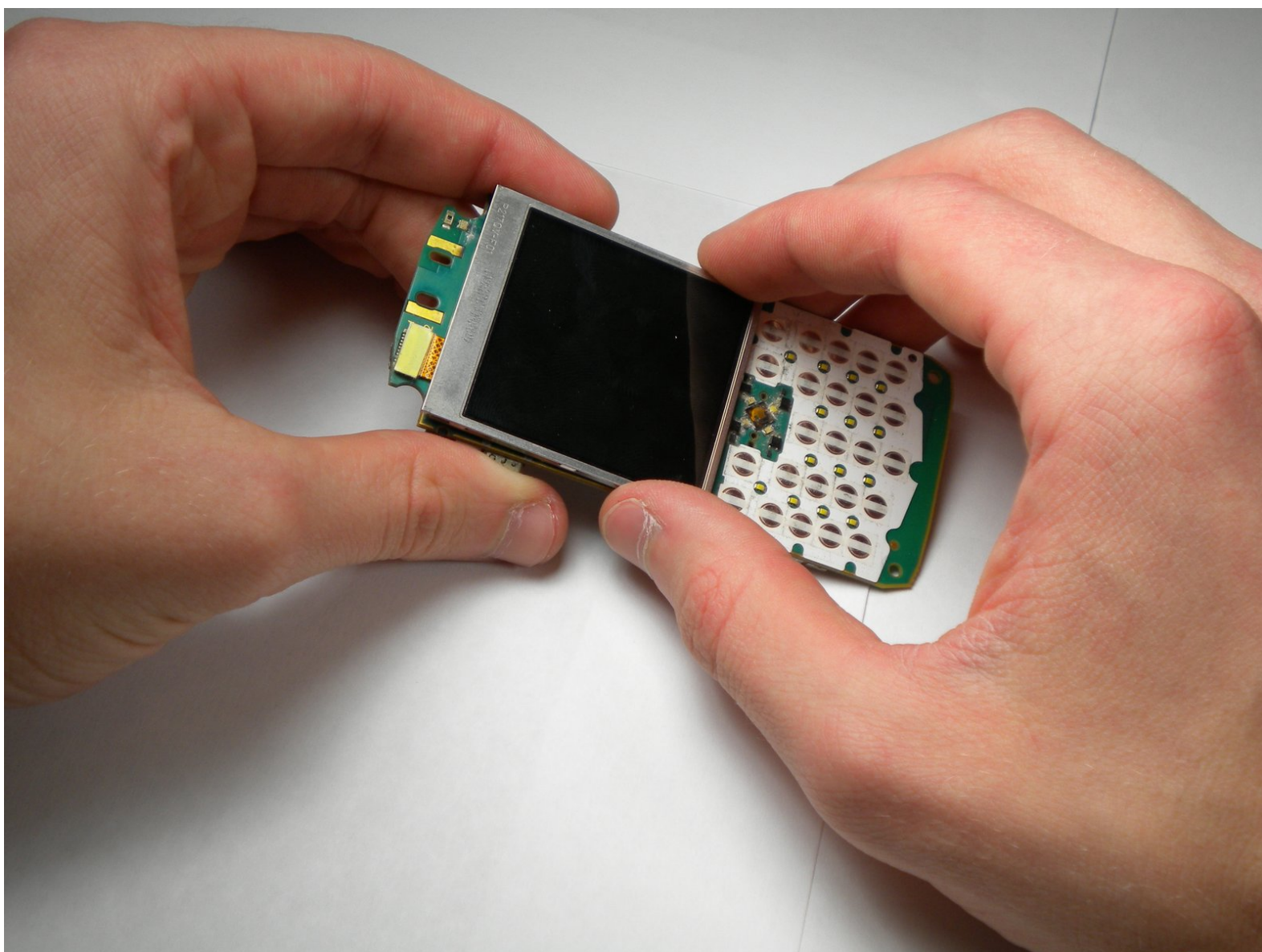




# BlackBerry Pearl 8100 Logic Board Replacement

Written By: Robert Cronin



---

## INTRODUCTION

View the repair guide to install the Logic Board for the BlackBerry Pearl 8100.

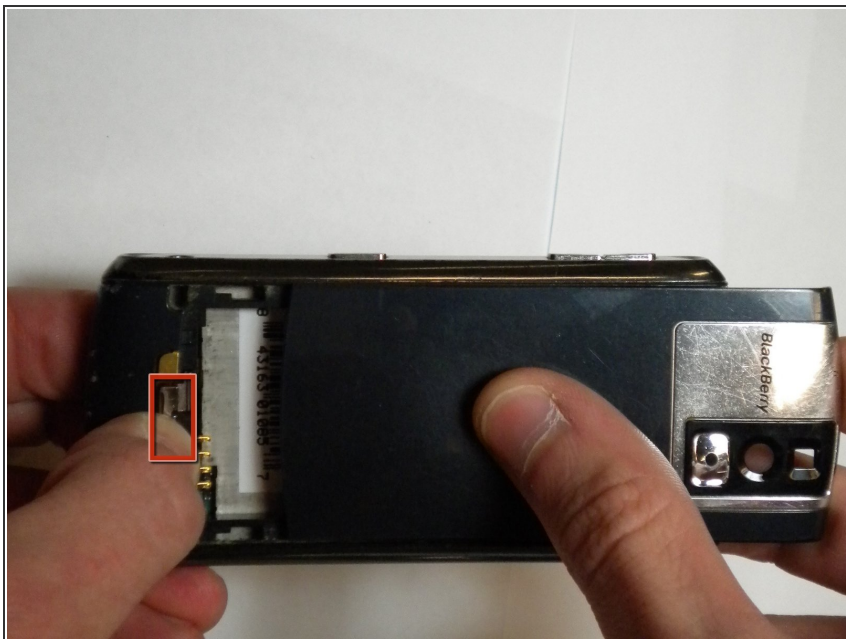
---



### TOOLS:

- [1.5mm Hex Screwdriver](#) (1)
  - [Spudger](#) (1)
-

## Step 1 — Battery



- ① Before working on the phone, be sure that the device is turned off.
- Begin by removing the back panel; this can be done by pressing the silver button on the backside of the BlackBerry 8100, while simultaneously sliding the back panel off.

## Step 2



- Remove the battery located directly below back panel.



## Step 3 — Keyboard



- Using a 1.5 mm Hex screwdriver, remove the two screws that hold the two panels together.

## Step 4



- Using the spudger, pry off the small portion of the casing located at the bottom of the phone.

## Step 5



- Using the spudger, pry off the side casings one at a time by wedging it between the inner casing and the sides.

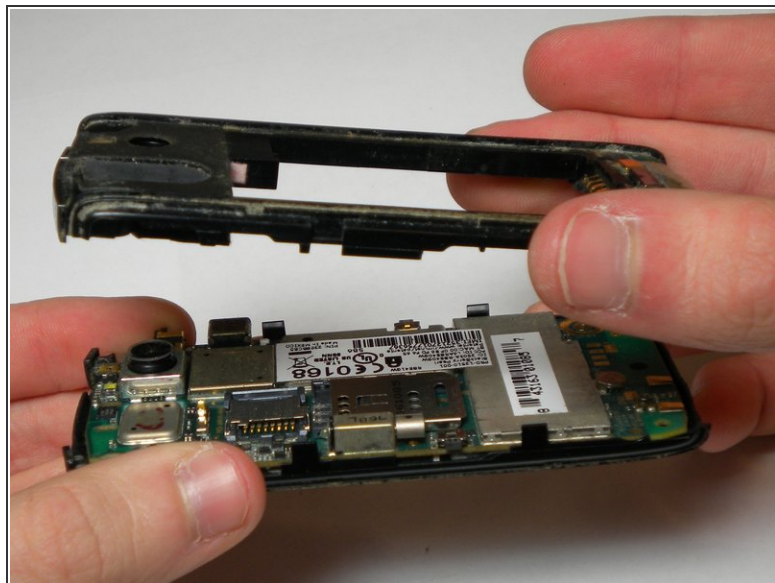
## Step 6



- Using a 1.5mm Hex screwdriver, unscrew the two screws, located on the front of the phone, that connect the back and front panels.

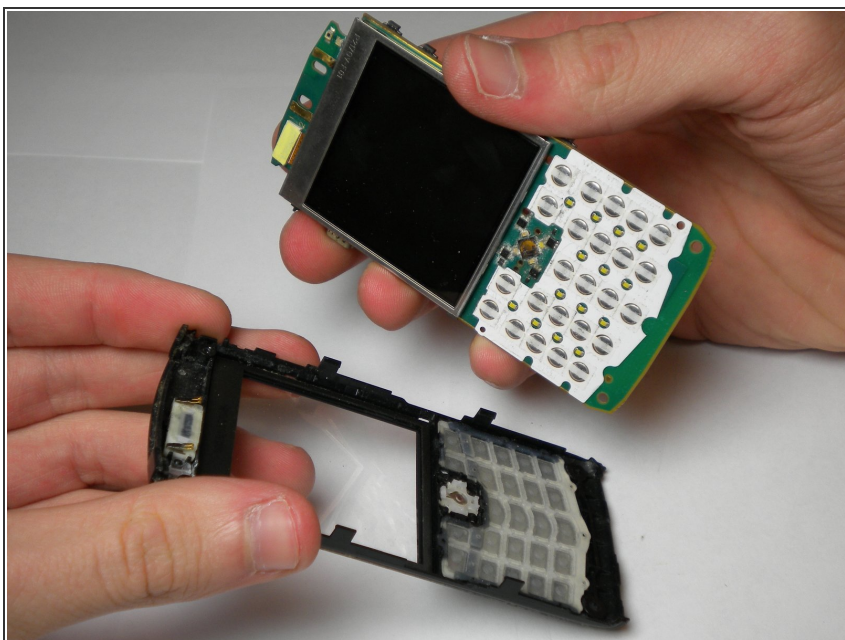


## Step 7



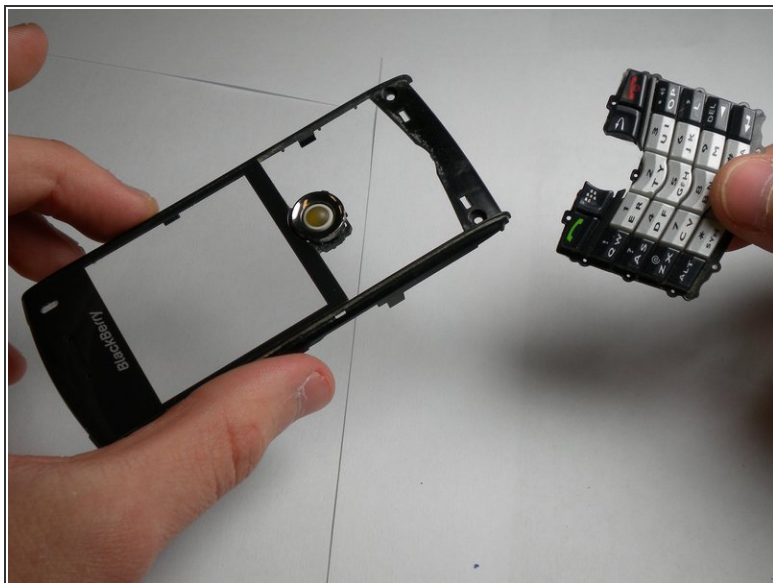
- Using the spudger, pry off the back body panel by wedging the spudger in between the front and back panels on the side face. Remove the back body panel.

## Step 8



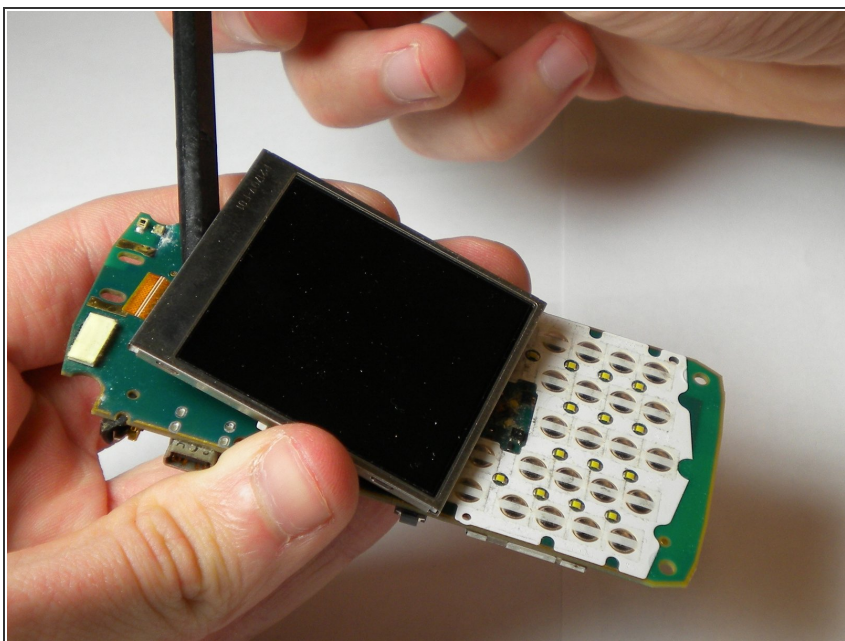
- Separate the logic board from the front panel.

## Step 9



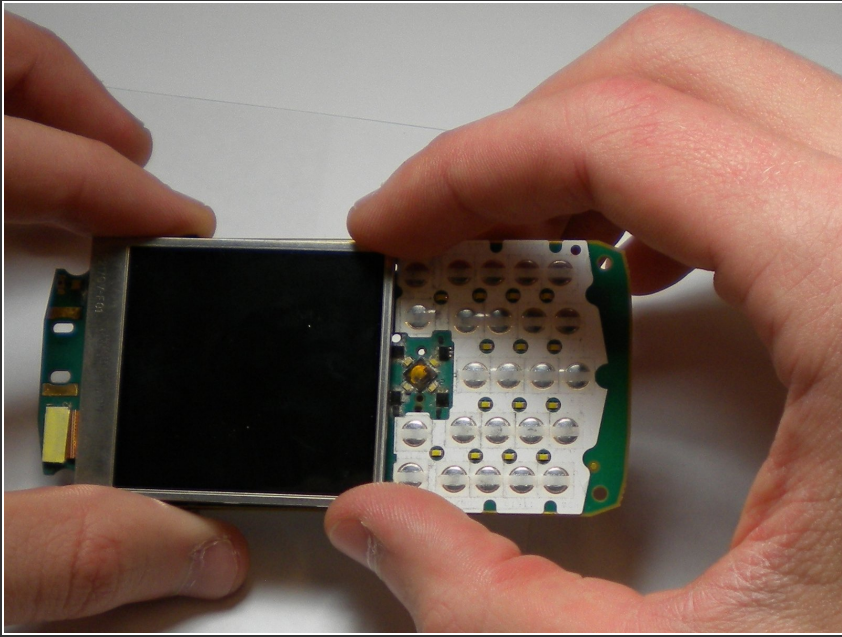
- Gently remove the keyboard from front casing. It should snap out of place.

## Step 10 — Screen



- After removing the logic board, place spudger between the logic board and screen and remove the screen, sliding it slowly away.

## Step 11 — Logic Board



- To place the screen on the new logic board, place the golden-colored filament in the slot above the screen's position, similar to how the old one was placed. There are two pegs that fit into the logic board and secure it.

To reassemble your device, follow these instructions in reverse order.