



# Disassembling Philips wake up light HF3485

## Diffuser

In this guide we will be removing the diffuser and the bottom panel of this lamp. This is necessary to access the electronic boards.

Written By: David



---

## INTRODUCTION

In this guide we will be removing the diffuser and the bottom panel of this lamp. This is necessary to access the electronic boards.

---

### TOOLS:

- [Sharp knife, Scissors, Blue Jeans](#) (1)
  - [Flathead Screwdriver](#) (1)
  - [Philips extra long screw driver](#) (1)
  - [2.5 mm Flathead Screwdriver](#) (1)
-

## Step 1 — Main board



- **WARNING** Make sure that the power cord of the lamp is unplugged and thus you will not encounter any live wire that tend to hurt...
- Stand the lamp up on a table and slightly press on the top gray panel of the lamp.

## Step 2



- Turn the lid anticlockwise.
- The top can now be easily removed.

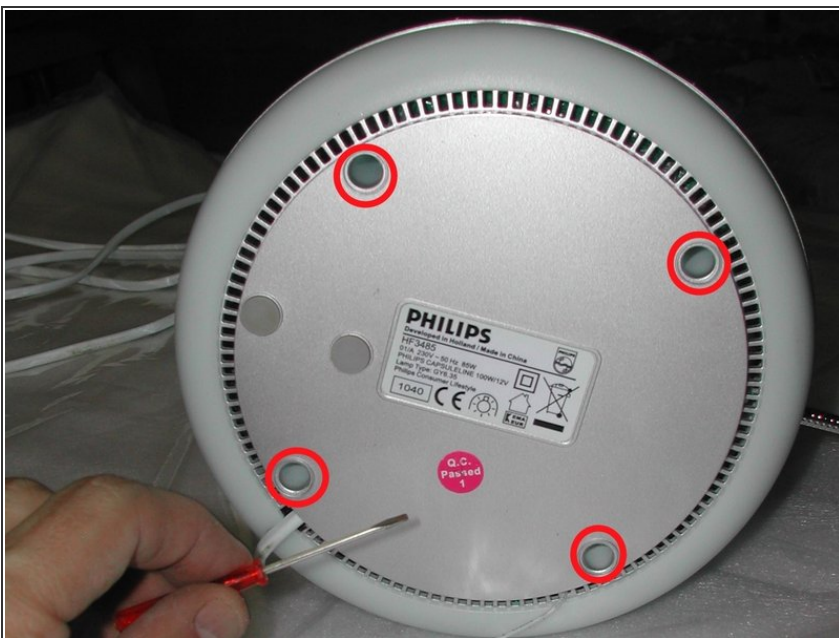


### Step 3



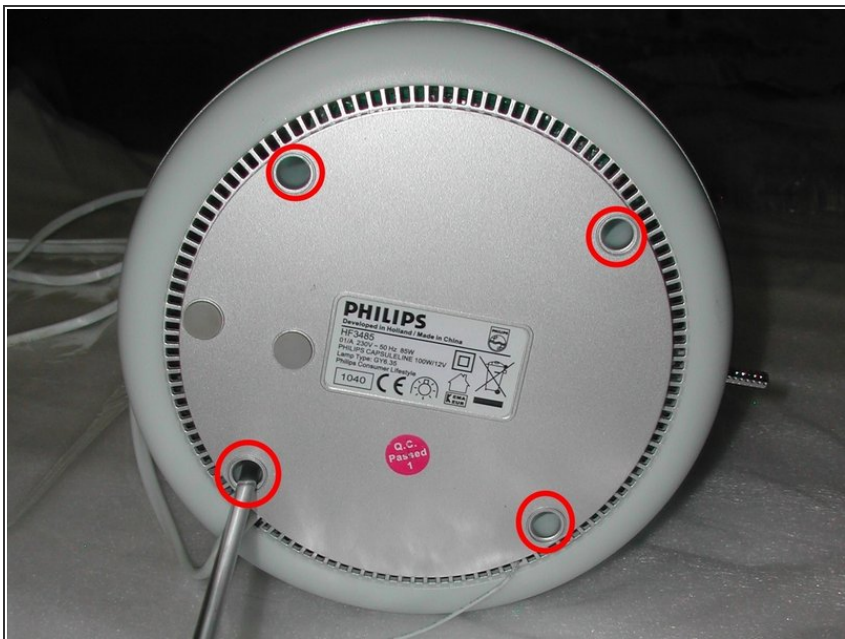
- Take off the bulb from the socket.
- By means of a long Philips screwdriver remove the 3 screws that holds the GU5.3 light bulb socket in place.

### Step 4



- Lay the lamp down on the table.
- With a small flat screwdriver peel off the four rubber feet hiding screws of the lamp bottom panel.

## Step 5



- With a long Philips screwdriver remove the four screws from the deep holes of the bottom panel.

## Step 6



- With a small flat screwdriver remove the bottom trim by gently levering at the snaps joining it with the command unit.

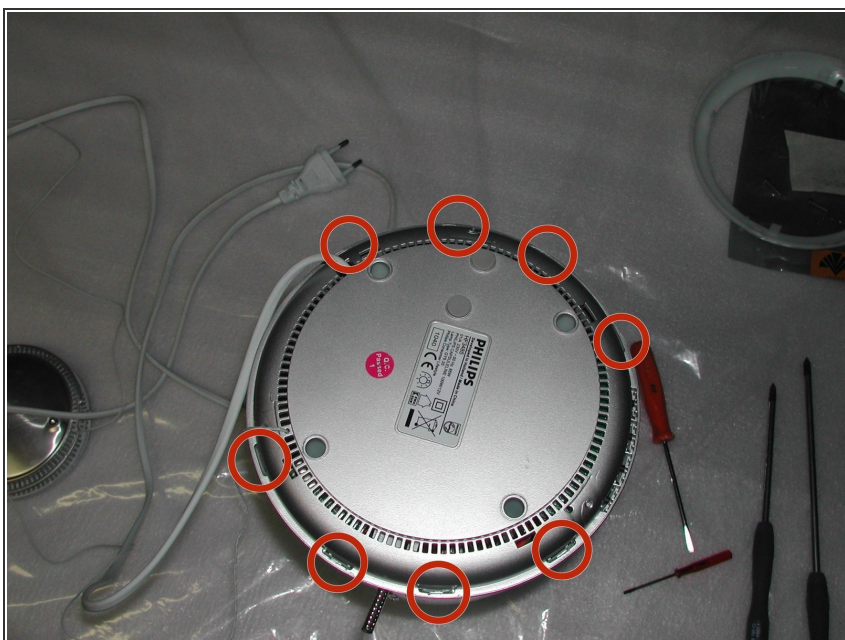


## Step 7



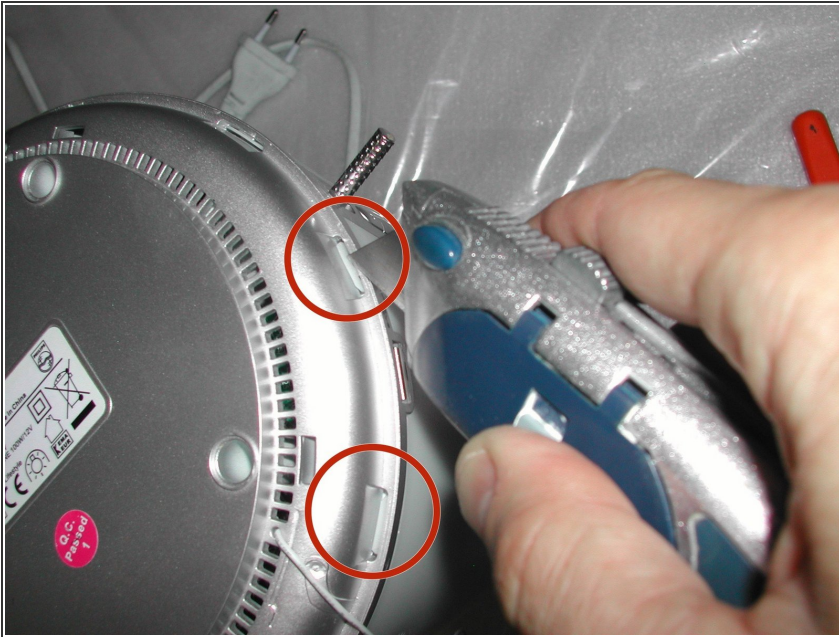
- Carefully remove the bottom trim.

## Step 8



- Locate the 8 plastic snap-ins that hold the diffuser attached to the bottom board of the lamp.
- These snap-ins are strongly attaching the diffuser to the bottom board and we may have to break one or two of them in order to separate the diffuser.

## Step 9



- Cut one or two plastic snap-ins with a box-cutter.
- This will ease to free the other plastic snap-ins without any other risk of damage. Philips must have designed this so that the lamp can not be serviced.

## Step 10



- With a small straight screwdriver free the remaining 6 snaps by simultaneously press each snap and pull the diffuser off the bottom board.



## Step 11



- Smoothly pull off the main board from the diffuser.
- On the figure note the snap-ins in green that remain intact from the previous step and the snap-in in orange that was cut.

## Step 12



- With a pair of scissors cut the plastic clip fastener that ties the two wires of the bulb socket.
- This step is necessary to loose the main board.



## Step 13



- Now we can go ahead with the fixing of the electronic board.

To reassemble your device, follow these instructions in reverse order.