



Dell Latitude E6400 WiFi Card Replacement

Written By: Nicholas Ouimet



INTRODUCTION

I will be showing you how to remove, and replace the WiFi card in your Dell latitude E6400. The entire process shouldn't take more than 10 minutes, as only 2 screws need to be removed to remove the card.



TOOLS:

- [Phillips #1 Screwdriver](#) (1)
- [iFixit Opening Tools](#) (1)



PARTS:

- [Dell Latitude E6400 Wi-Fi Card](#) (1)

Step 1 — WiFi Card



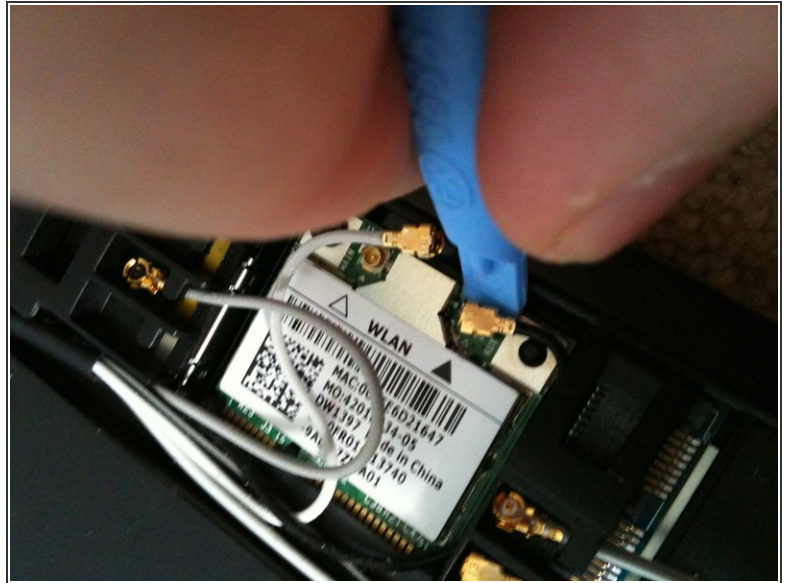
- Simultaneously slide the battery latches (outlined by the red box) to the dock connector in the middle.
- This will release the battery. Just slide the battery away from the computer.
- Open up the computer and press and hold the power button for 5 seconds. This drains any power left inside the computer.
- This is important, as if electricity remains in the notebook, it can shock you and damage the logic board.

Step 2



- Loosen the center screw with a philips screw driver. This is the only screw that needs to be loosened.
- It can't be removed as it is captive the the bottom plate.
- Now slide the plate away from the dock connector.

Step 3



- Use a plastic opening tool or a spudger to remove the antennas.
- I use my fingers, but the picture shows and iPod opening tool because most adults have bigger fingers.
 - I'm 14, so my fingers are small enough.
- ⓘ Some E6400 models have a card with three connections—a gray wire in the middle—marked appropriately.

Step 4



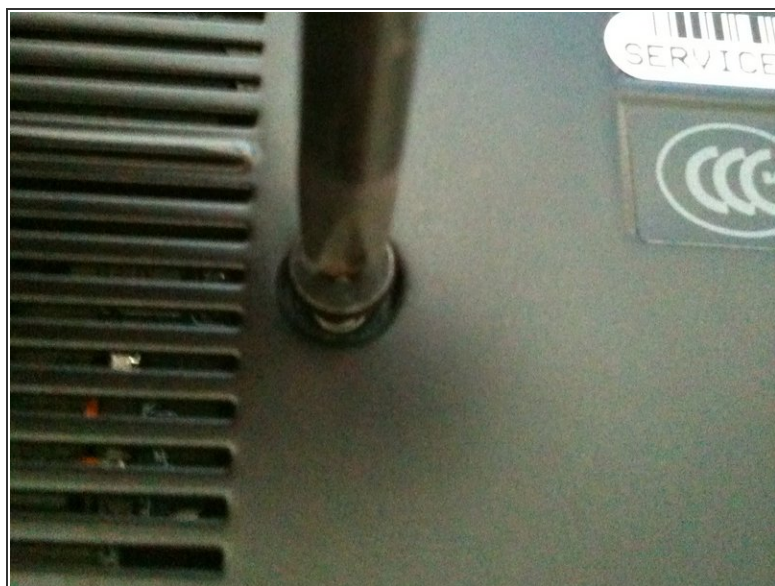
- remove the one and only philips screw securing the WiFi card in place.

Step 5



- The card should instantly pop to an angle less than 45 degrees once the screw is removed.
- Now simply pull the card strait away from the slot.
- Install a new card by sliding it in the direction of the arrow and pressing firmly down until it clicks.

Step 6



- Slide the bottom plate on.
- Slide it to the rear of the notebook. (battery compartment)
- Tighten the screw.
- Do not over-tighten. Doing so will strip the screw.

Step 7



- Slide the battery in until it clicks.
- Press the power button.
- AND it works.

To reassemble your device, follow these instructions in reverse order.