



Samsung Juke SCH-u470 Keyboard Replacement

Step-by-step guide for removing/replacing keypad.

Written By: Renee Kuzniar



INTRODUCTION

Step-by-step guide for removing/replacing keypad.



TOOLS:

- [Phillips #00 Screwdriver](#) (1)
 - [iFixit Opening Tool](#) (1)
-

Step 1 — Battery



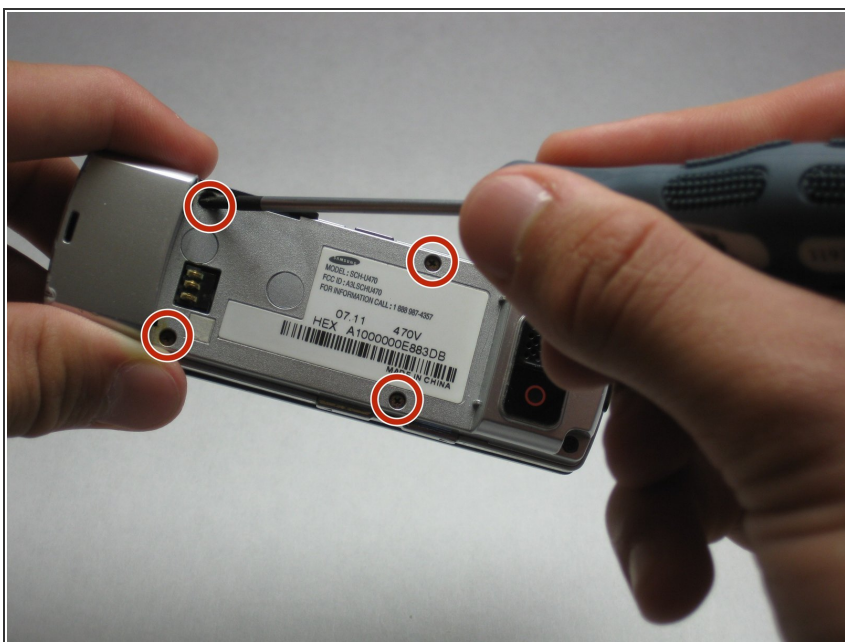
- Press and hold down the button on the bottom side of the phone with your finger.

Step 2



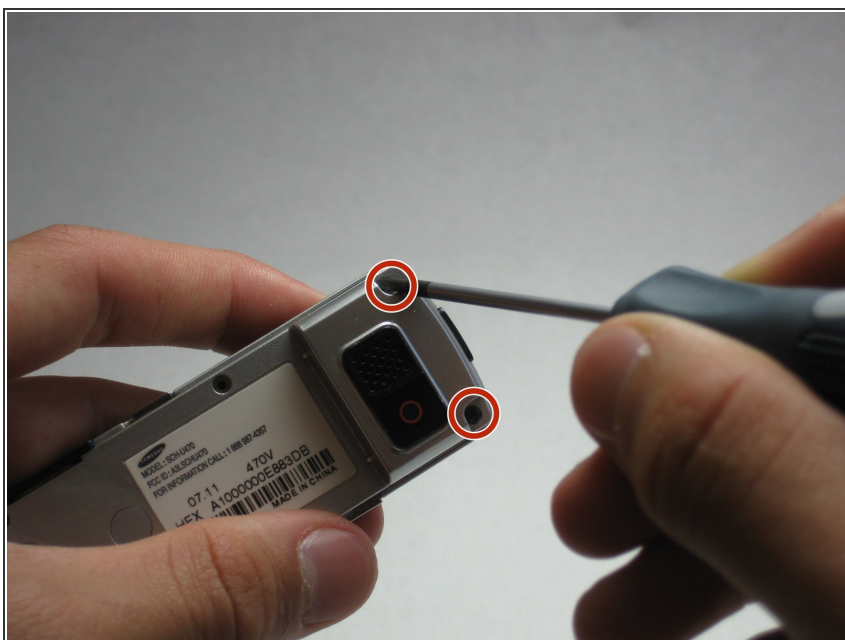
- While holding the button down, remove the back cover of the phone.

Step 3 — Camera/Speaker



- Remove the four screws from the back of the phone using a Phillips #00 screwdriver.

Step 4



- Remove the two 7.3 mm screws from the camera and the speaker at the bottom back plate of the phone using a Phillips #00 screwdriver.

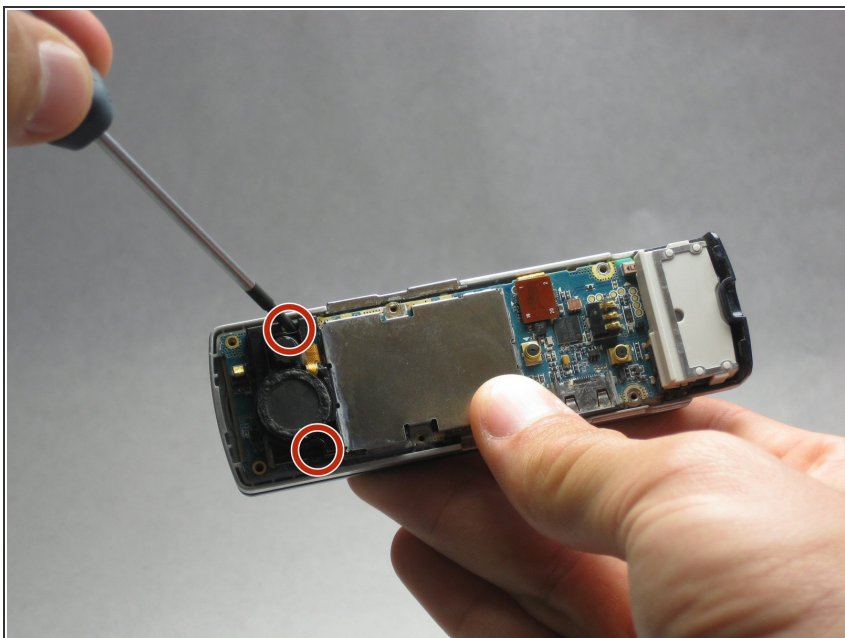
Step 5



- Locate the USB port (where the charger can be plugged in). Using the iFixit opening tool, open the phone cover.

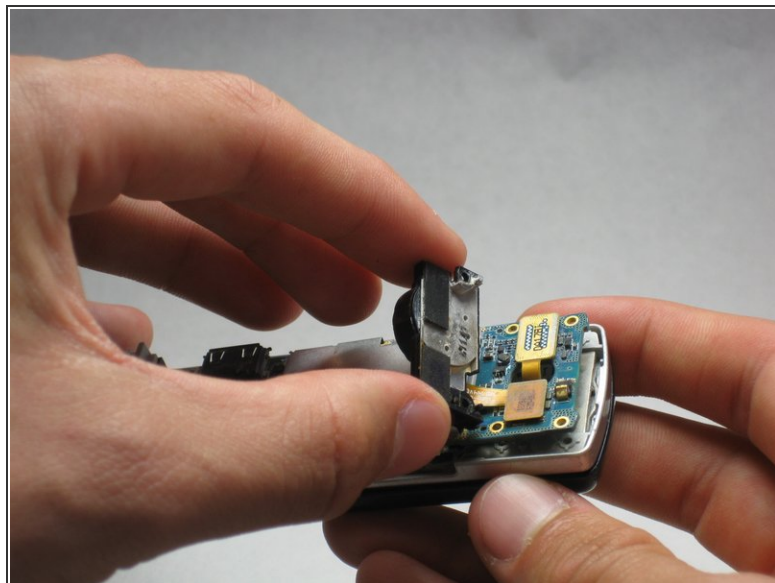
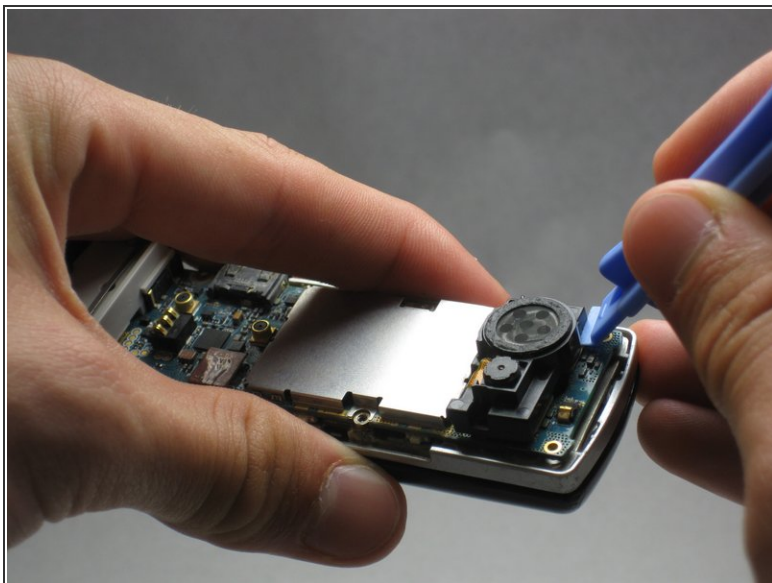
⚠ Failure to open USB port cover at this stage may result in damaging the device.

Step 6



- Remove the 5.5 mm screws from both sides of the camera/speaker with a Phillips #00 screwdriver.

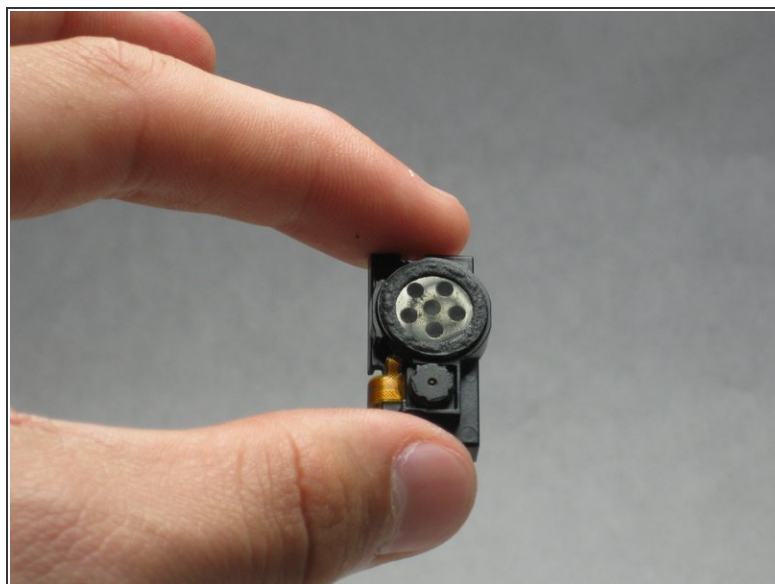
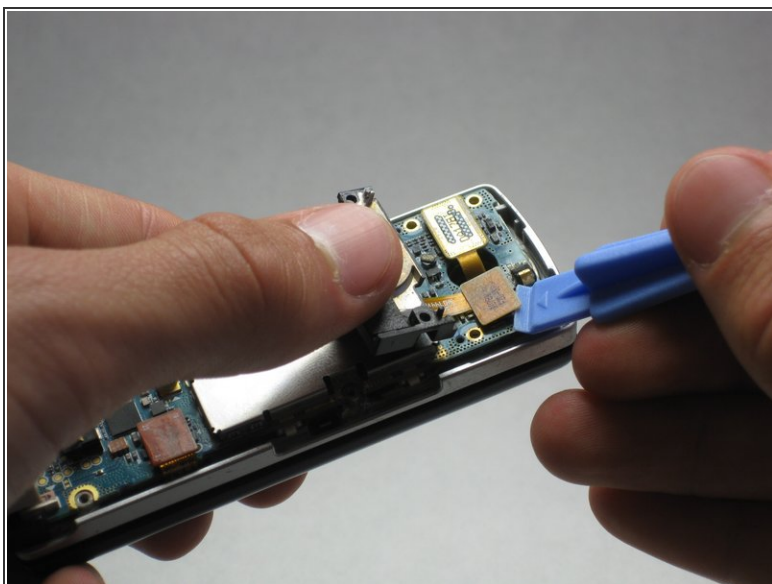
Step 7



- Use the iFixit opening tool to remove the camera/speaker from the motherboard.

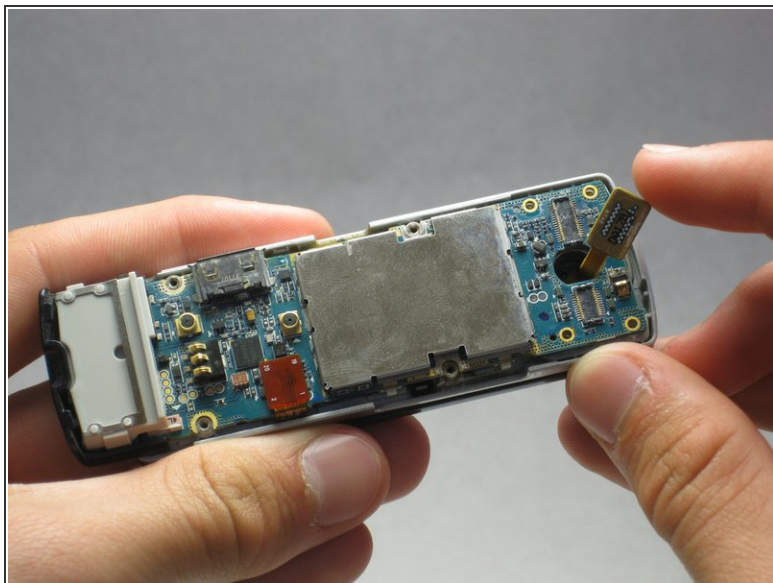
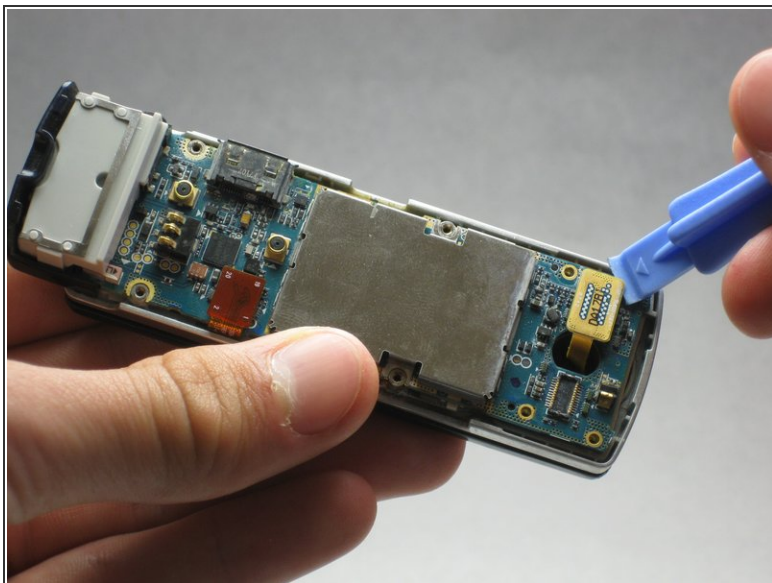
⚠ Practice caution to prevent damage to the attaching ribbon.

Step 8



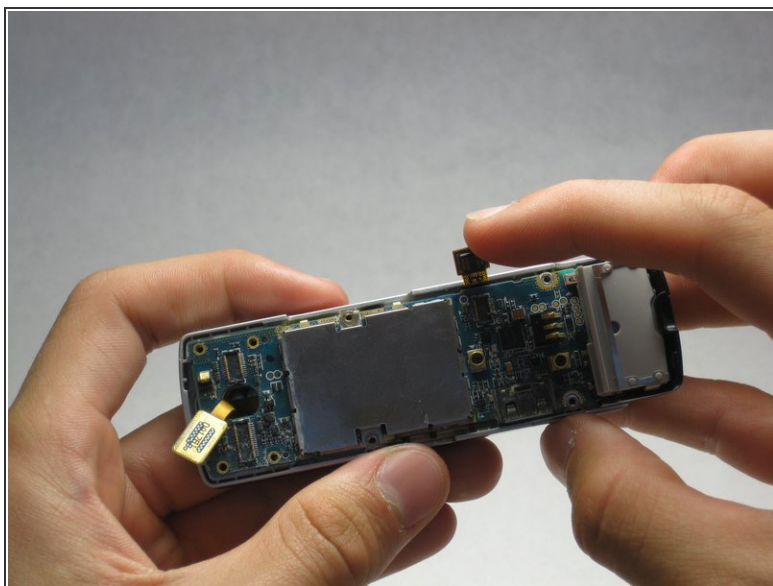
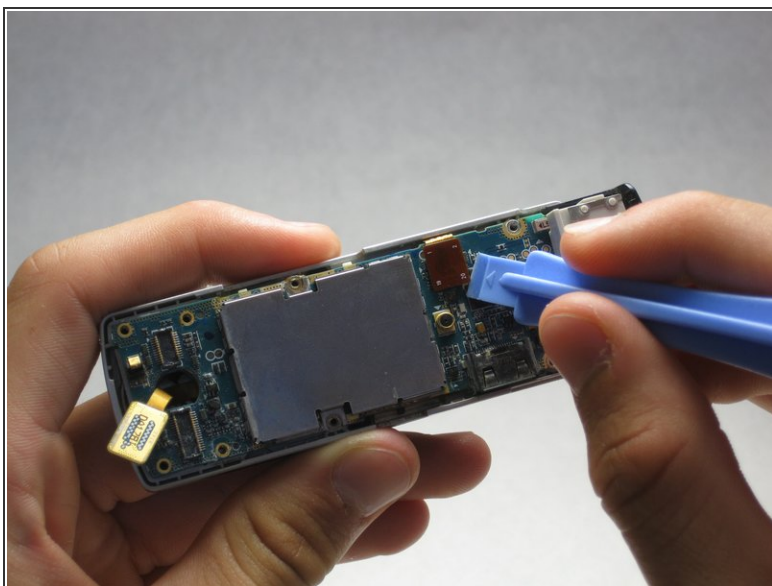
- Use the iFixit opening tool to gently pry the camera/speaker off.

Step 9 — Motherboard



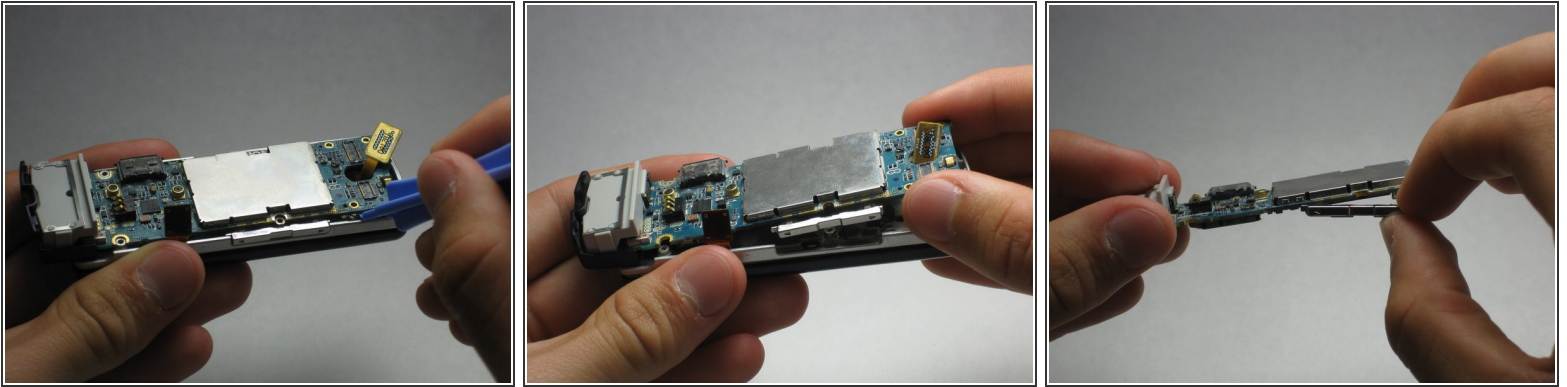
- Use the iFixit opening tool to remove the yellow tab on the motherboard.

Step 10



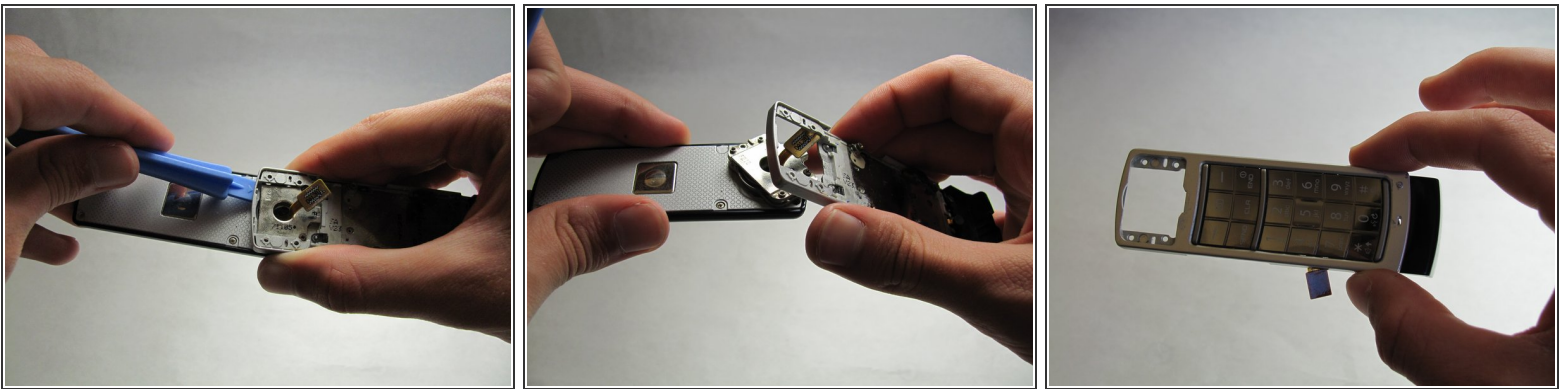
- Use the iFixit opening tool to remove the other orange tab to free the motherboard.

Step 11



- To completely remove the motherboard, use the iFixit opening tool to leverage it up, then use your fingers to pull it out.
- ⓘ Do not be alarmed if the volume and hold buttons are removed from the motherboard.

Step 12 — Keyboard



- Open/swivel the phone so the back of the LCD panel is visible.
- Use the iFixit opening tool to pry the keypad from the hinge on the back of the device.
- ⓘ A moderate amount of force may need to be applied.

To reassemble your device, follow these instructions in reverse order.