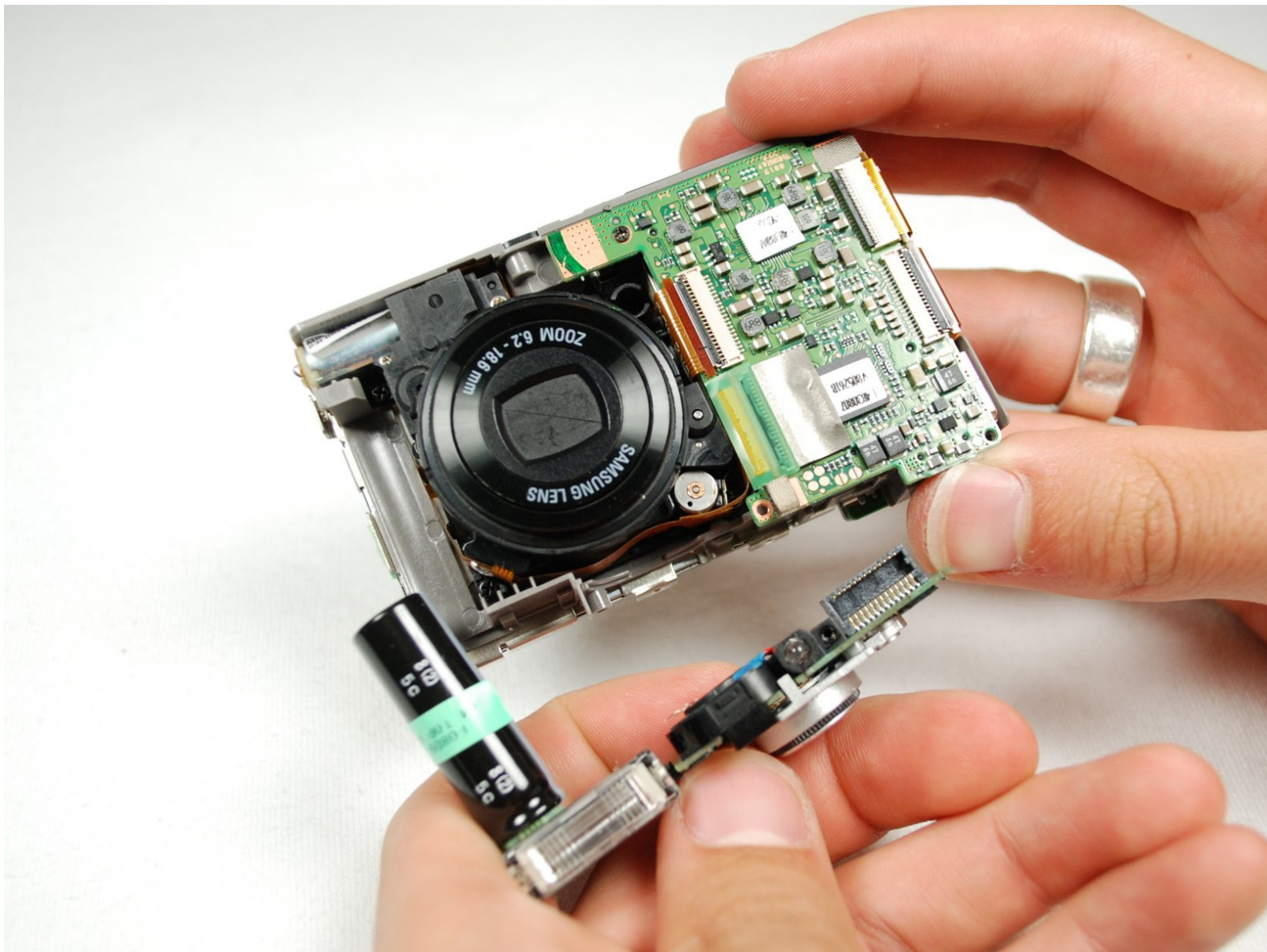




Samsung L100 flash assembly replacement

Written By: Adriel



INTRODUCTION

Flash bulb soldered to circuit board with capacitor, so it is not possible to only replace flash bulbs.



TOOLS:

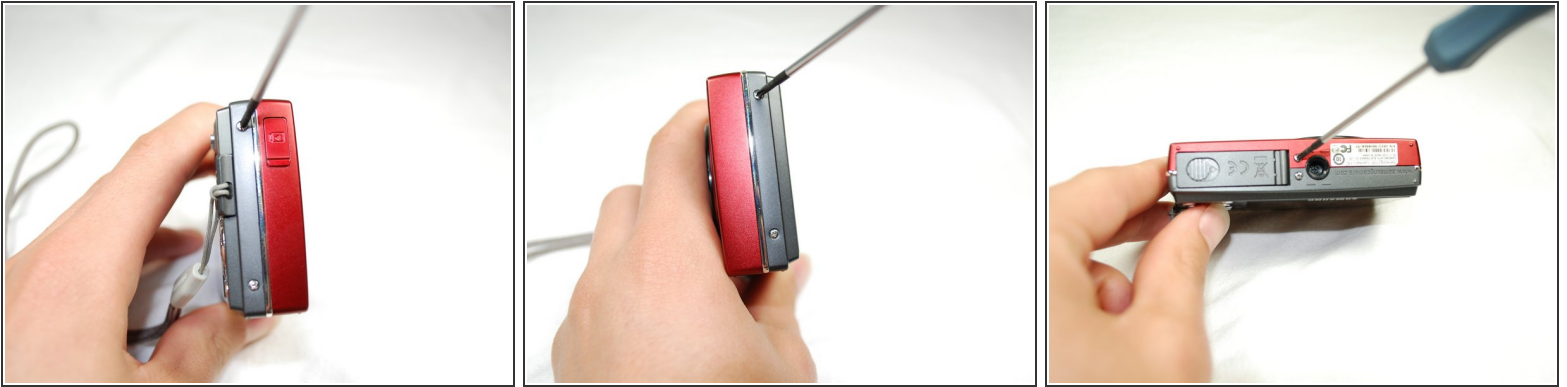
- [Phillips #0 Screwdriver](#) (1)



PARTS:

- [Flash Circuit Board](#) (1)

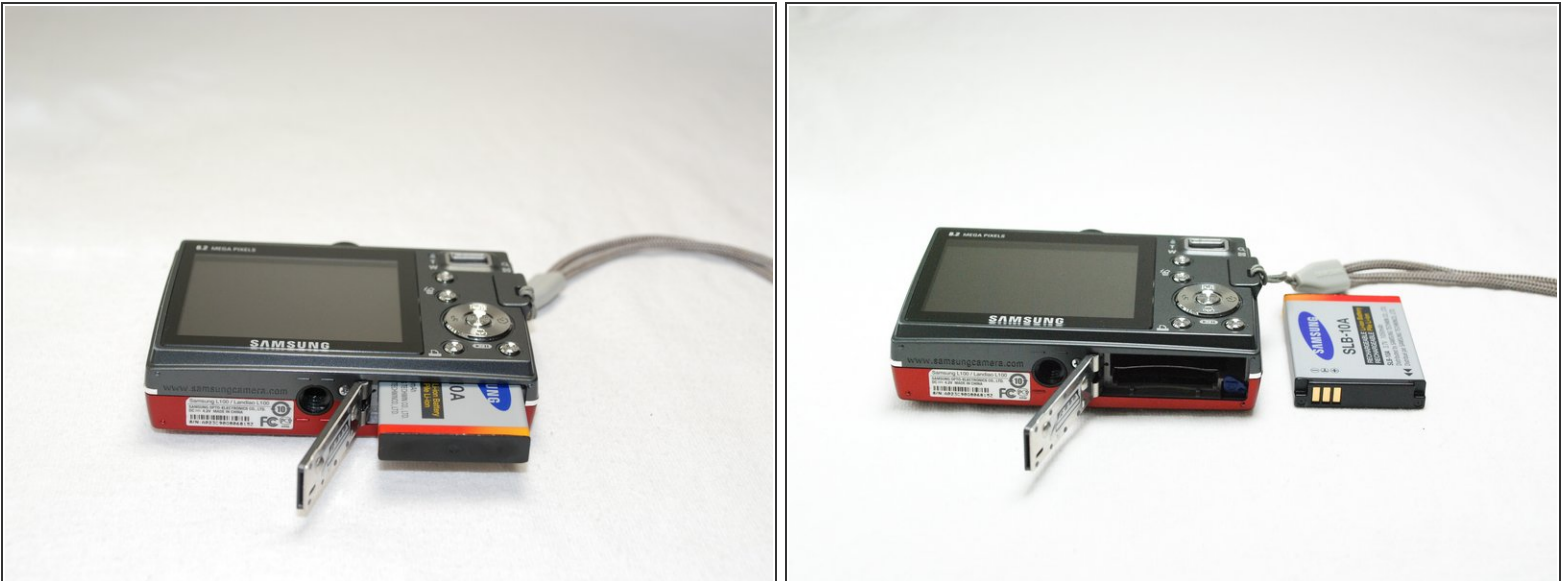
Step 1 — Removing Back Cover



- Remove the **six** external screws from the camera using a **Phillips #0** screwdriver.
- After the screws has been removed, the bottom of the back half of the external case should be loosened from the camera.

⚠ Be careful, make sure you don't lose the screws.

Step 2



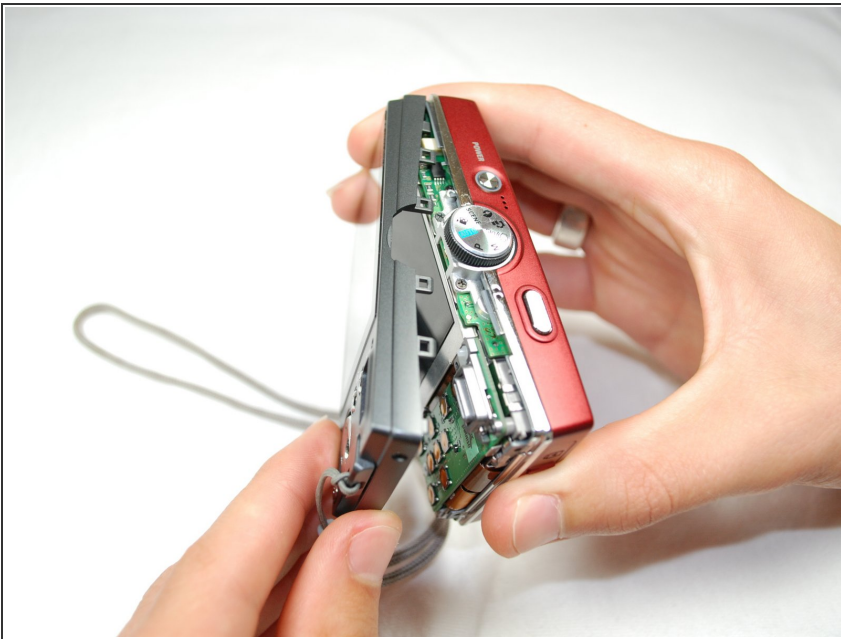
- Open the battery cover that's located on the bottom right side of the camera and carefully remove the battery.

Step 3



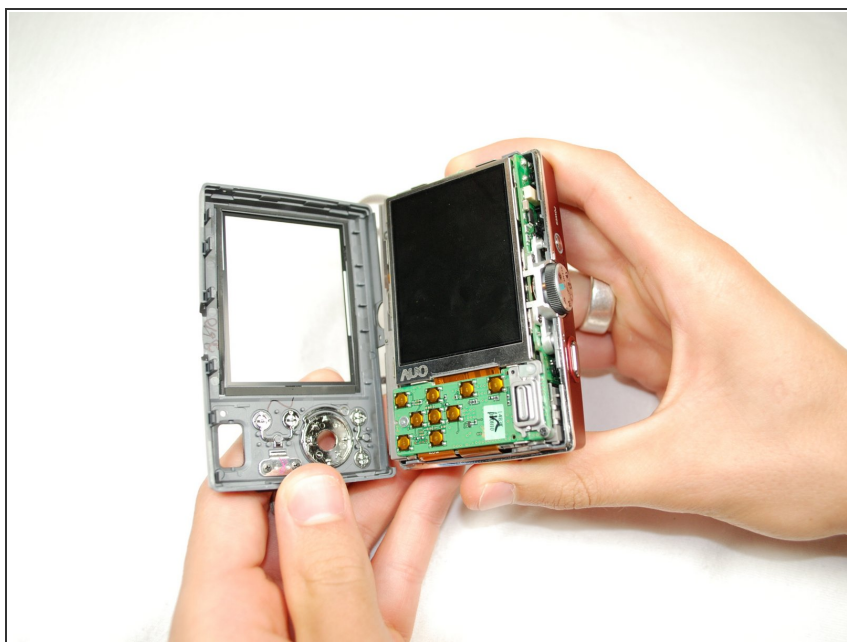
- Slide your fingernail or a plastic spudger in the groove from the bottom to the top right side of the camera.

Step 4



- Carefully squeeze the top right corner of the camera and pry off the external cover.
- ⓘ If you hear a "cracking" sound. This is normal.
- Continue to pull the external cover and it will come off cleanly.
- ⚠ Be cautious of the flash capacitor. It carries an electrical charge, that may give you an unpleasant shock.

Step 5



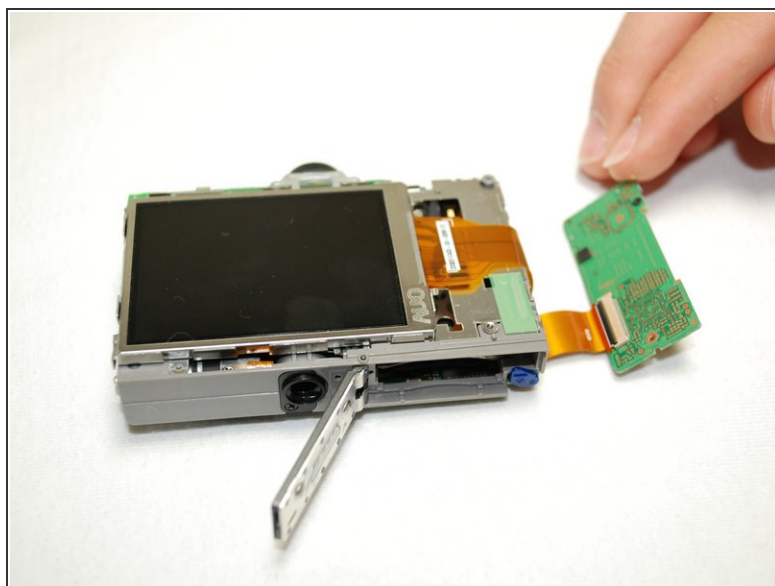
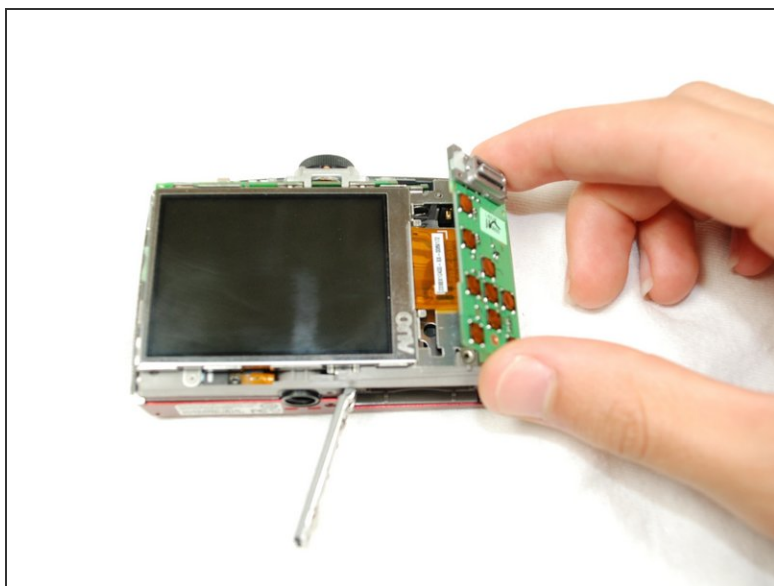
! Carefully pull off the back cover, parts behind the back of the case might fall out.

Step 6 — Flash Circuit Board



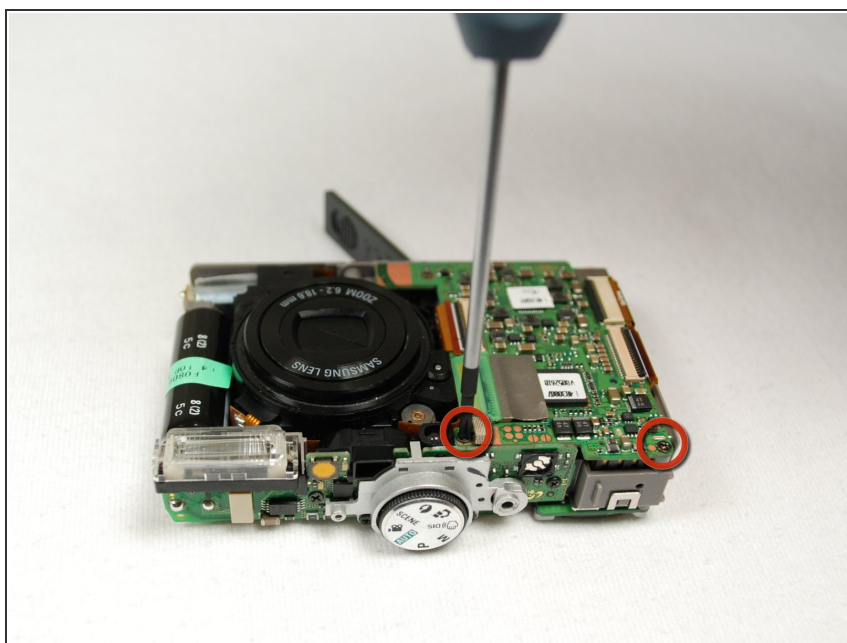
- Remove the screws holding the circuit board.
- After you remove the screws, carefully remove the circuit board.

Step 7



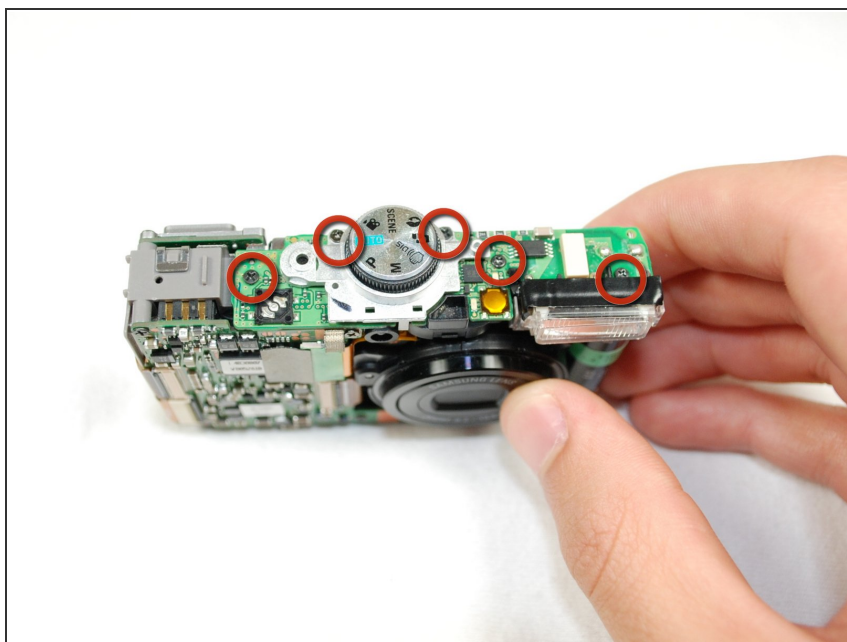
- Remove the front cover, it comes off easily.
- ⚠ Buttons might fall out when you remove the front cover.

Step 8



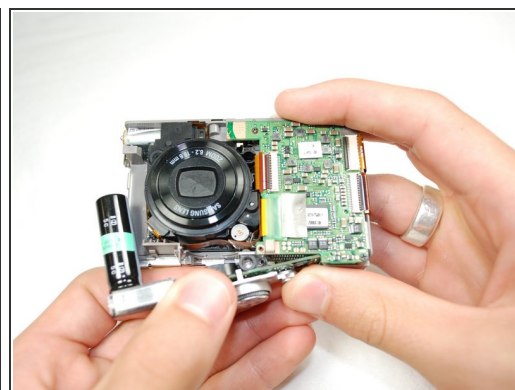
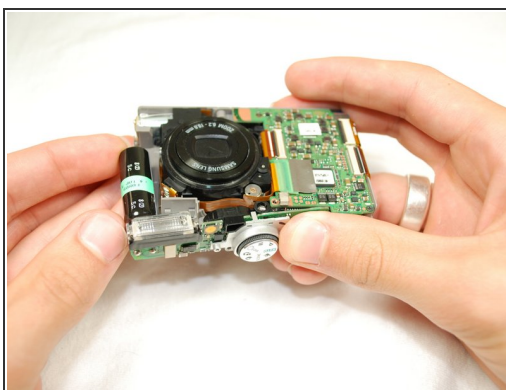
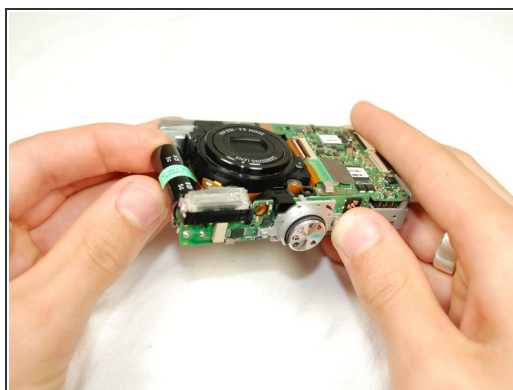
- Face camera towards you.
- Remove the two screws from circuit board on the left side of the lens.

Step 9



- Carefully hold up the circuit board, while it's still connected to the camera.
- Remove all five screws that's on top of the camera.

Step 10



- Carefully push up the top of the circuit board.
- Pull up flash circuit board from top of camera.

To reassemble your device, follow these instructions in reverse order.