



bObi Robotic Vacuum Obstacle Sensors Replacement

Directions for disassembling bObi's cover to access and repair the wall or obstacle detection sensors under the bumper.

Written By: Chelsea



INTRODUCTION

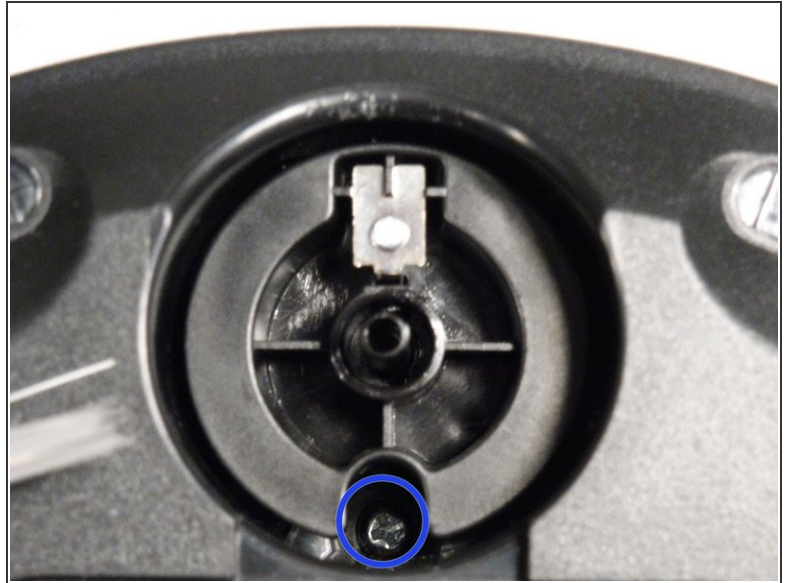
For assistance putting bObi back together, follow the guide on closing bObi: [Closing bObi's Cover Post-Repair](#)



TOOLS:

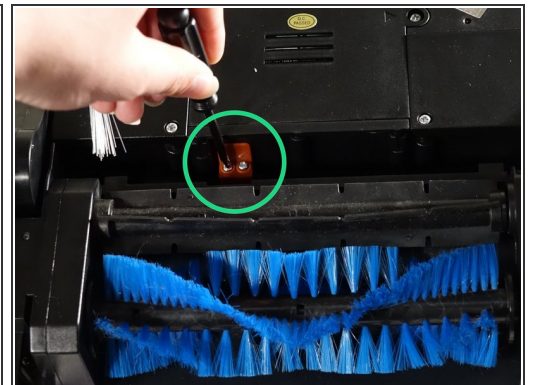
- [Phillips #2 Screwdriver](#) (1)
-

Step 1 — Top Cover



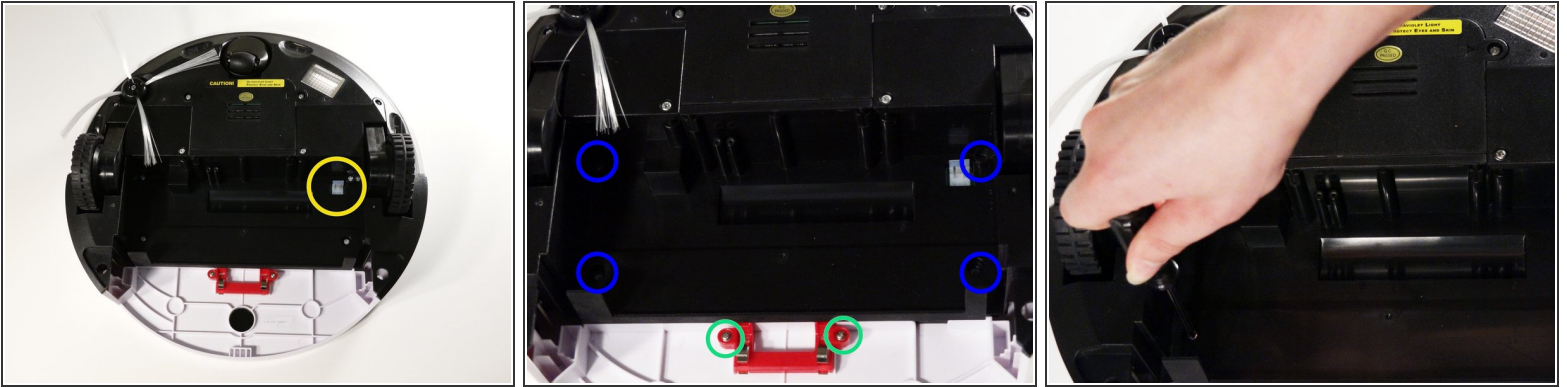
- Remove bObi's front wheel to access one of the screws holding bObi together.
- i* Make sure the wheel is turned closer to bObi's front touch sensors. Use your screwdriver for leverage, and the wheel will pop up and out.
- Uninstall the larger screw that sits deeper in the wheel compartment.

Step 2



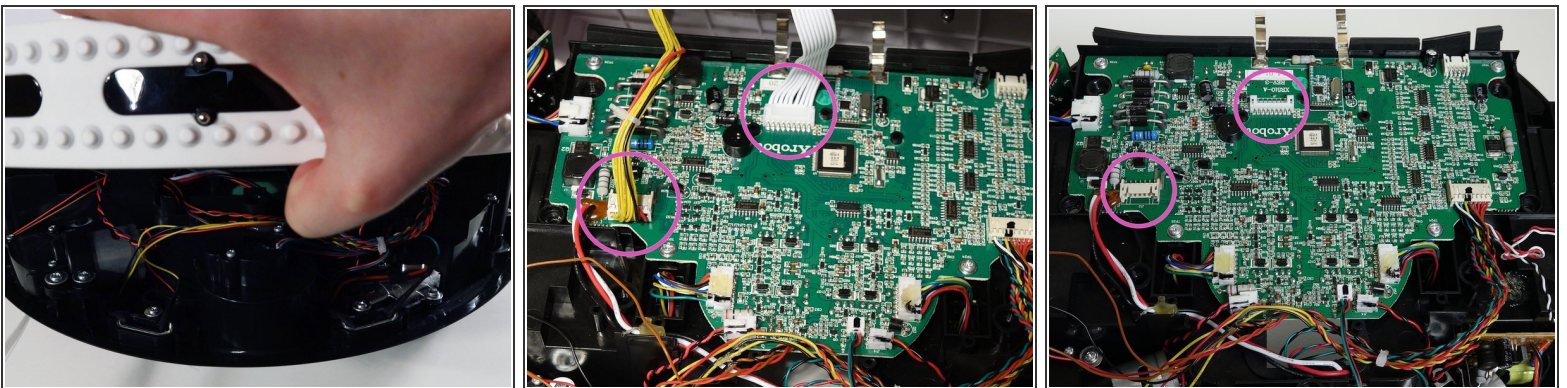
- Remove bObi's dustbin.
- Uninstall the 2 screws close to the bin and 2 smaller screws above her main brushes.

Step 3



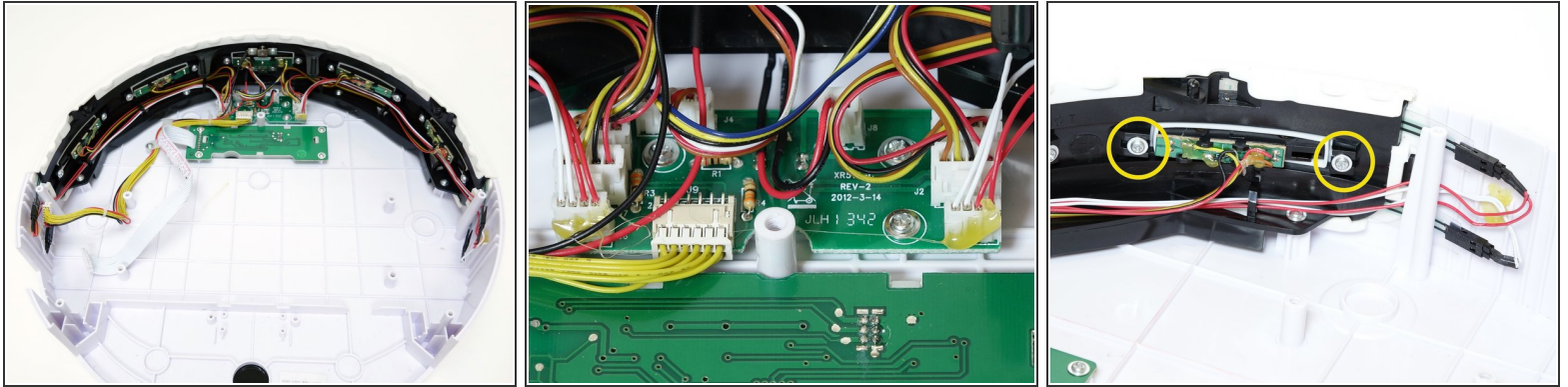
- Lift the brush holder. To detach completely, unplug it from bObi.
- Remove the two screws on the dustbin contact point holder inside bObi.
- There are 4 screws beneath the main brushes. Uninstall these, and open bObi up to expose her main circuit board.

Step 4



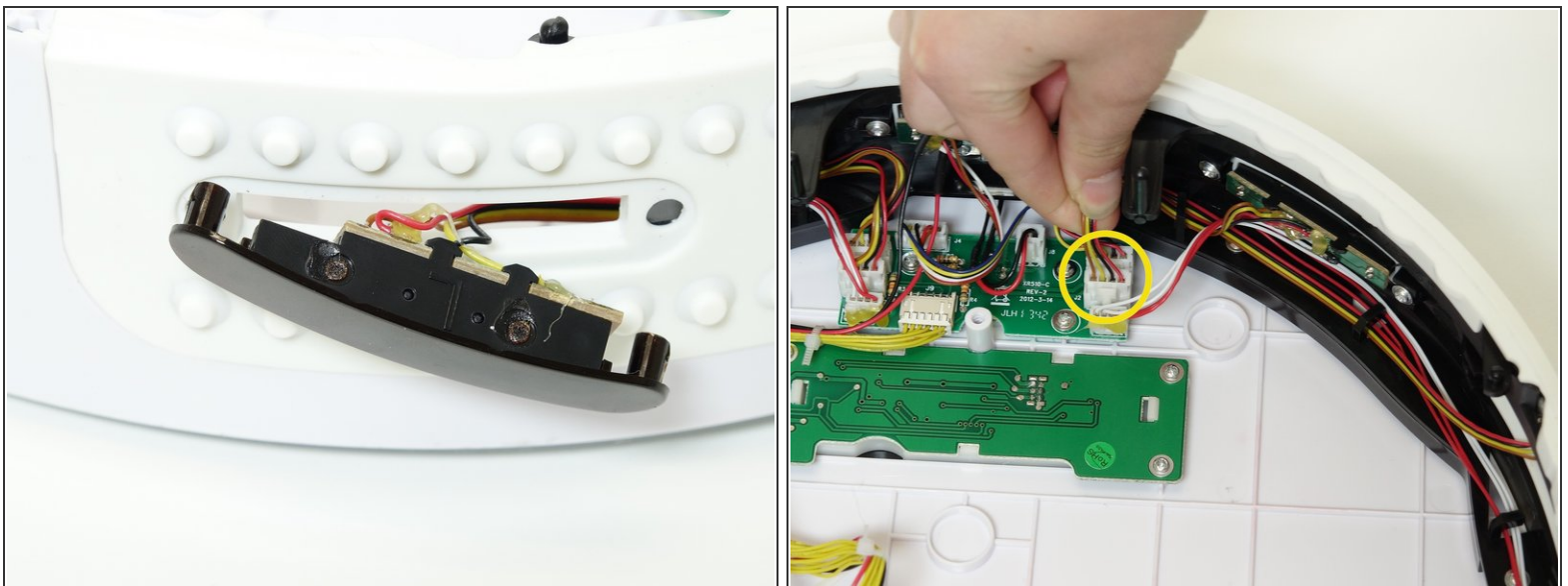
- Detach the two circuit plugs connecting bObi's cover to the main board and the cover will be completely removed.

Step 5 — Obstacle detection sensors



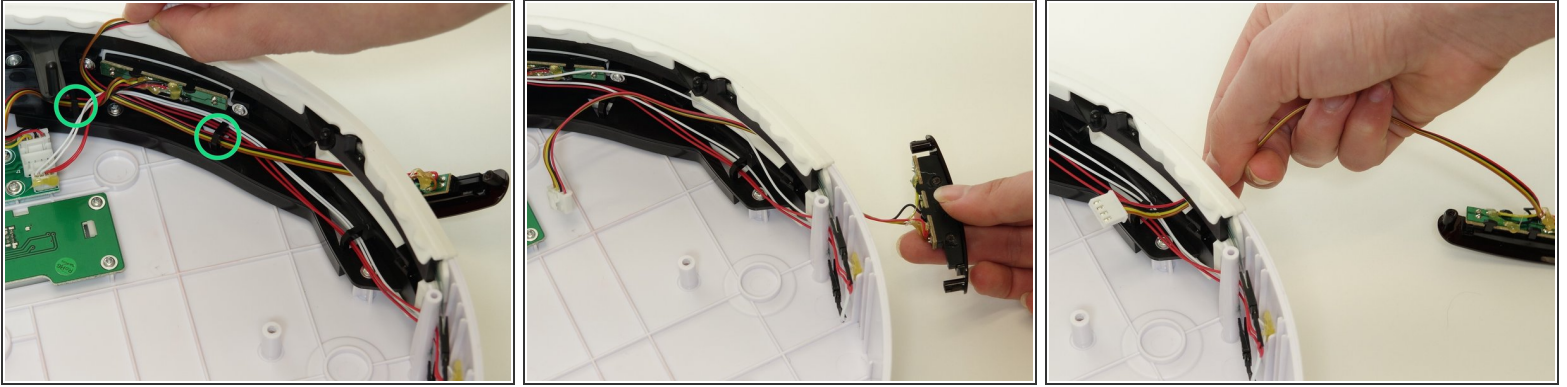
- All of bObi's wall detection sensors are plugged in to a small circuit board on the underside of the cover.
- Refer to bObi's check up test in order to determine which sensor is in need of repair. Then, remove the two screws holding it on the front bumper.

Step 6



- You will be able to push the sensor from the inside of the cover, so it pops out of its place on the bumper.
- Unplug the appropriate circuit plug from the cover's circuit board.

Step 7



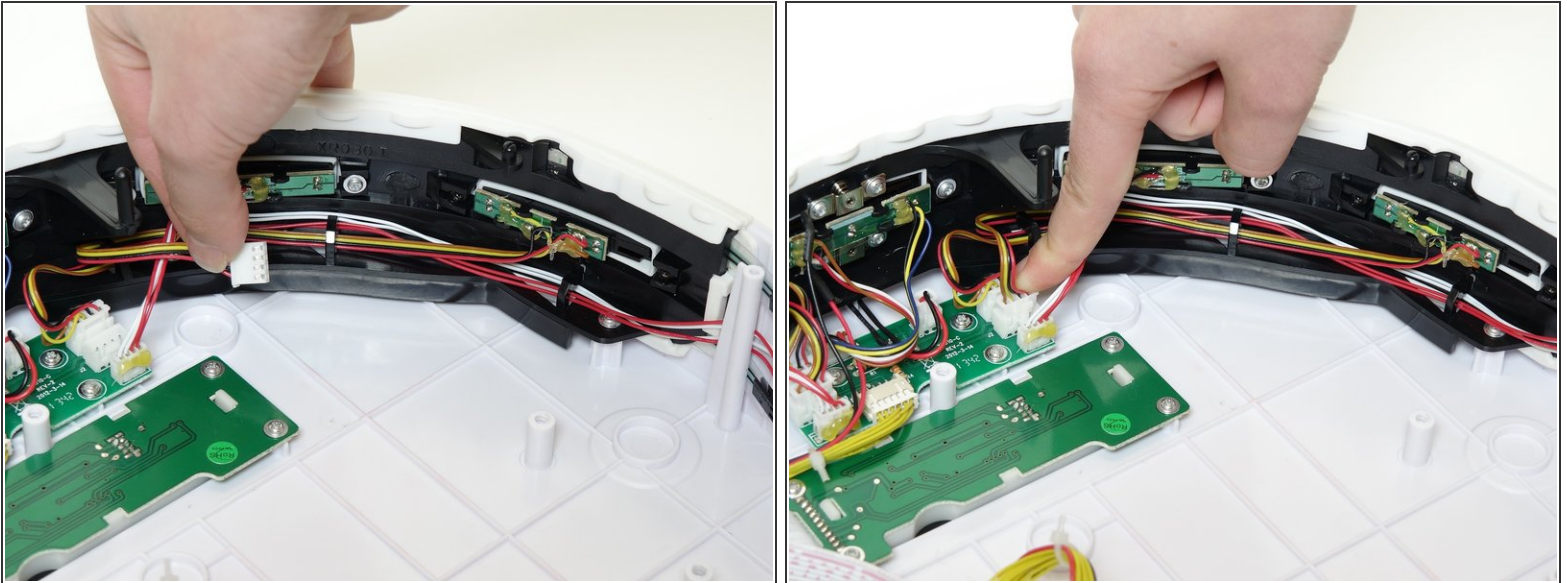
- Unhook the wires from the holders on the inside of the bumper.
- Feed the circuit plug and its wires through the open space in bObi's bumper.

Step 8



- Put the circuit plug for your replacement part through the obstacle detection sensor's open slot.
- Place the actual sensor in its space on the bumper and install the two screws which secure it to bObi.

Step 9



- Feed the wires for the sensor's circuit plug back through the hooks on bObi's bumper.
- Then, plug it into the empty spot on bObi's cover circuit board.
- To finish off this repair, follow the closing bObi manual: [Closing bObi's Cover Post-Repair](#)

To reassemble bObi, refer to the Closing bObi Guide.