



Sony Handycam HDR-XR500V Hard Drive Replacement

How to replace a Sony Handycam HDR-XR500V hard drive.

Written By: Rosalie Contreras



INTRODUCTION

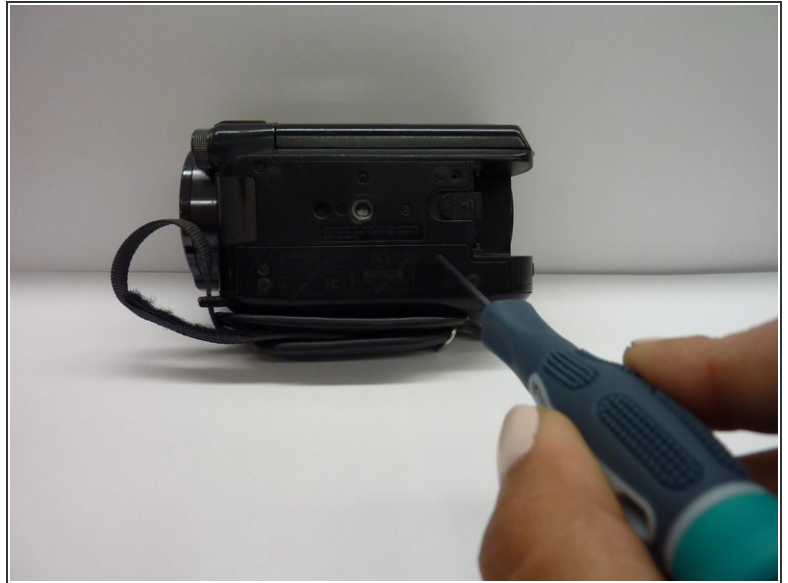
Before throwing your defunct drive in the freezer or hitting it like the Fonz in the hopes that it will magically work again, follow this replacement guide. Be sure to conduct your repairs in a Class-100 clean room (less than 100 particles of dust per square foot of air) to prevent internal contamination and have some sort of container prepared to save your screws.



TOOLS:

- [Phillips #00 Screwdriver](#) (1)
-

Step 1 — Hard Drive



- Start at the bottom of the camera, where the threaded tripod mount is. There you will find two screws securing a plastic panel, one next to the Sony logo and the other under the push tab.
- Remove the two 3mm Phillips #00 screws from this panel. Note that all screws mentioned in this assembly are 3mm Phillips #00 screws and thus only one tool is needed for this replacement.

Step 2



- While the camera is oriented upside-down, locate the screw in the upper-right corner of the side opposite the LCD screen, under the strap and near the lens.
- Remove the screw.

Step 3



- Locate the end of the Velcro strap under the harness.
- Pull the Velcro strap away from camera towards the lens.
- Pull the harness away from the camera to remove the strap.

Step 4



- Using your nails, pry open the MIC tab so it points away from the camera. You'll feel a tongue-and-groove locking mechanism under the raised opening tab that needs to be pressed inward to release.

Step 5



- Under the MIC tab are two more Phillips-Head screws, one in between the red and green ports and one under the locking mechanism. Remove them both.

Step 6



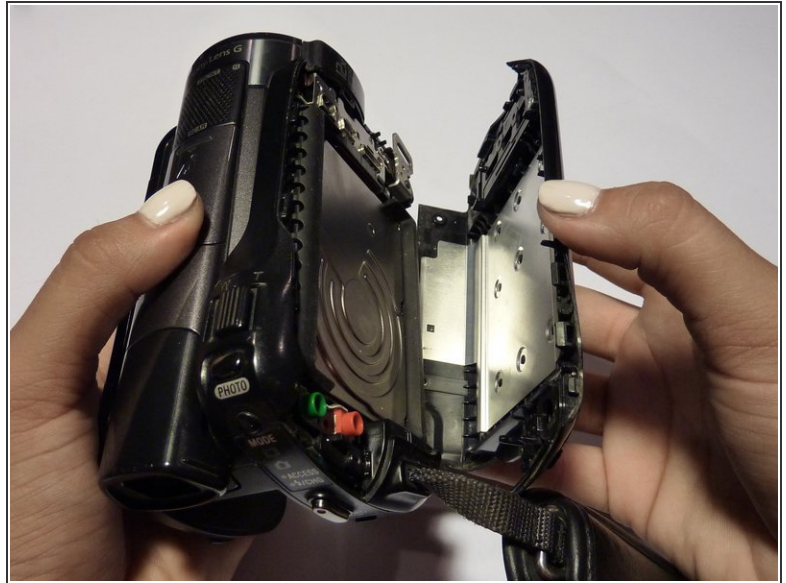
- Open AVR –HDMI tab by sliding the flat panel next to the "HDD" engraving towards the camera's lens.

Step 7



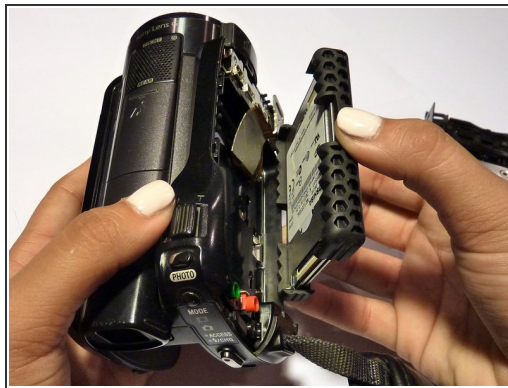
- Under the AVR tab, on either side of the USB port and above the HDMI port, you will find two more screws. Remove them both.

Step 8



- Hold the camera upright and, using your nail between the far right panel and the rest of the assembly, pry the hard drive open. If all screws were removed before this step, it should come away with very little effort.

Step 9



- Pull the hard drive out from the compartment. You should know it by its silver raised sides and hexagon-patterned edges.
- Insert the new hard drive in the same orientation as the one you just removed, i.e. manufacturer specs point inward and the silver outer casing faces the covering panel.

To reassemble your device, follow these instructions in reverse order. Be sure to test your camcorder after assembly to ensure the new disk drive is compatible and operational.