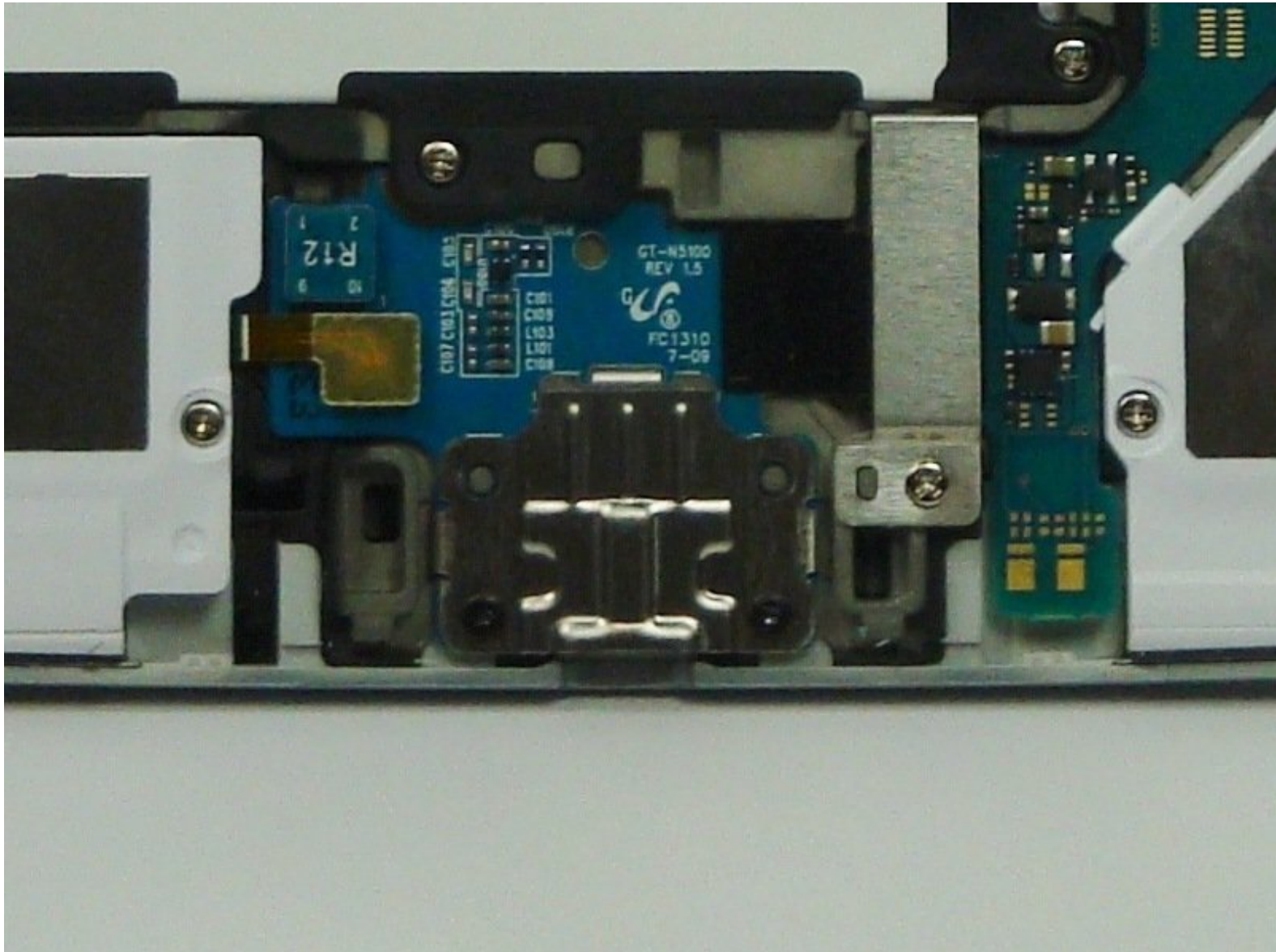




Samsung Galaxy Note 8.0 USB Port Replacement

You will be replacing the micro USB port of your device.

Written By: Joel



INTRODUCTION

The micro USB port is used to connect the charger. Over time, it can become damaged or worn. This could cause the tablet to have trouble recognizing the charger, which could result in the device having trouble charging. In this case, the micro USB port has to be replaced. This guide shows you how to replace it.



TOOLS:

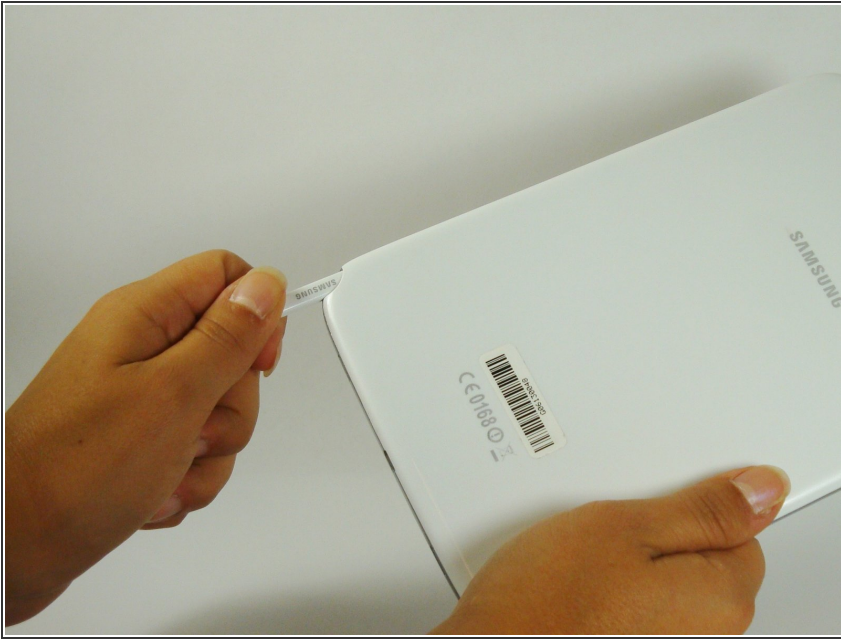
- [Phillips #00 Screwdriver](#) (1)
- [iFixit Opening Tools](#) (1)



PARTS:

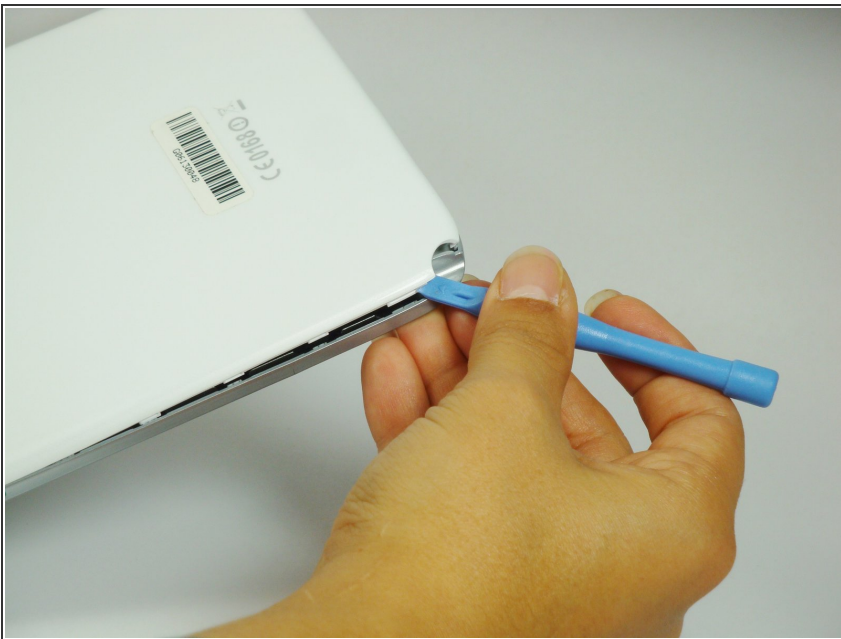
- [Galaxy Note 8.0 \(Wi-Fi Only\) Charging Port](#) (1)

Step 1 — Back Cover



- Remove the Samsung S-Pen stylus.
- Remove the micro SD storage card.

Step 2



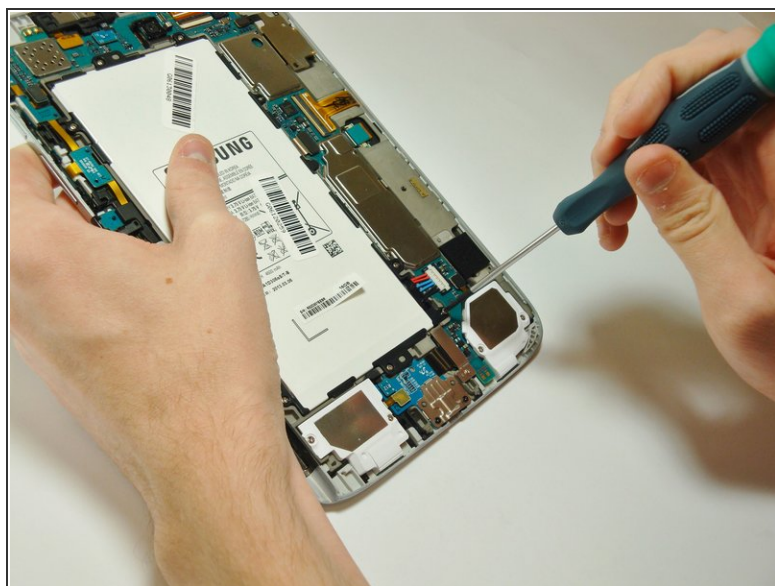
- Using the plastic opening tool, start where the S-pen was located and carefully pry up the corner.

Step 3



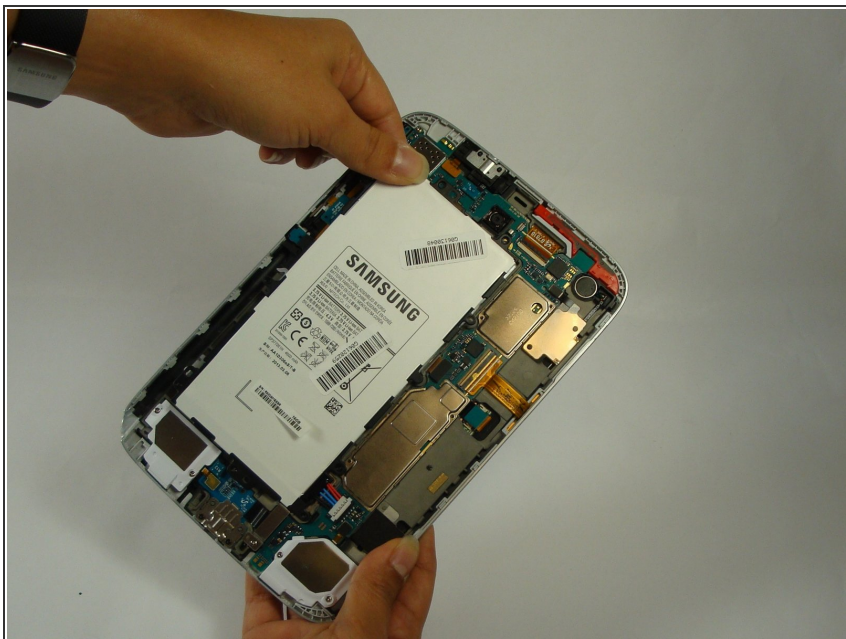
- Work your way around the entire device by carefully prying and sliding the plastic opening tool.
- ⓘ There are clips approximately 2cm apart. As you are removing the back cover you should hear the clips being dislocated from the tablet.

Step 4 — Battery



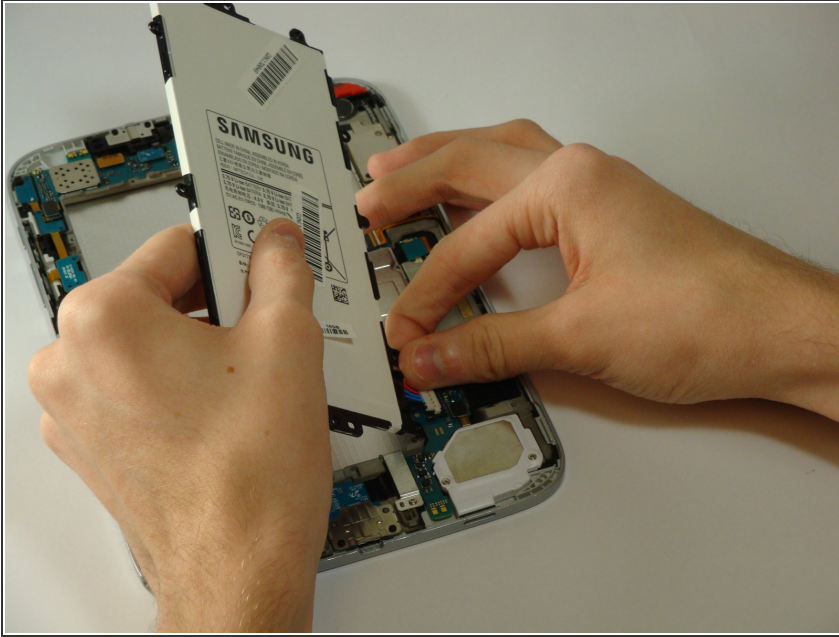
- Remove the 8 Phillips#00 3-mm screws holding the battery in place.

Step 5



- Lift the top left corner of the battery up by the black tab.

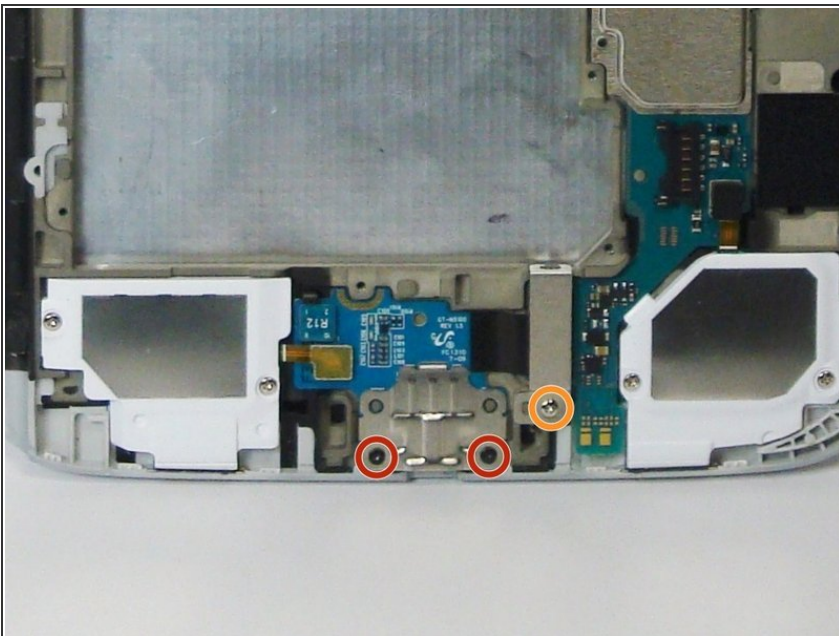
Step 6



- Gently grasp and lift up the white connector located at the bottom right corner of the battery. It is connected to the battery by two blue and two red wires.

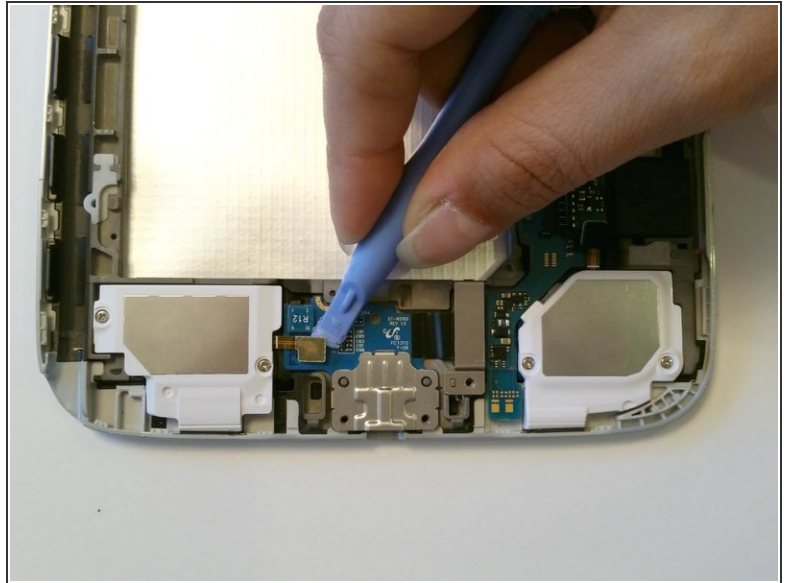
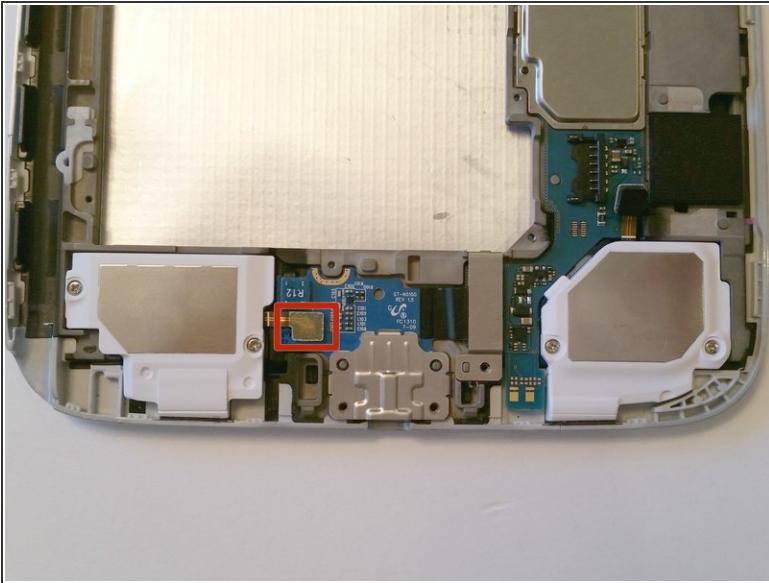
⚠ Do not yank the connector by the wires. If it does not disconnect easily, slide a plastic opening tool between the white connector and the board to lift the connector away from the board.

Step 7 — Micro USB Port



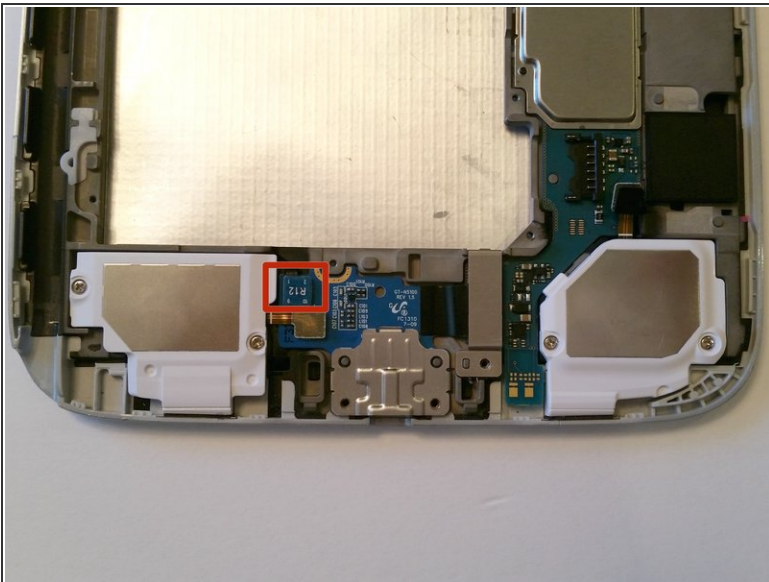
- Remove the two 4.5-mm Phillips head screws from the micro USB Port using a Phillips #00 screwdriver.
- Remove the silver 3-mm Phillips head screw from the silver metal strip using a Phillips #00 screwdriver. This strip covers the connection to the mother board and will be removed in a later step.

Step 8



- Gently lift up the gold connector on the left side of the board.

Step 9



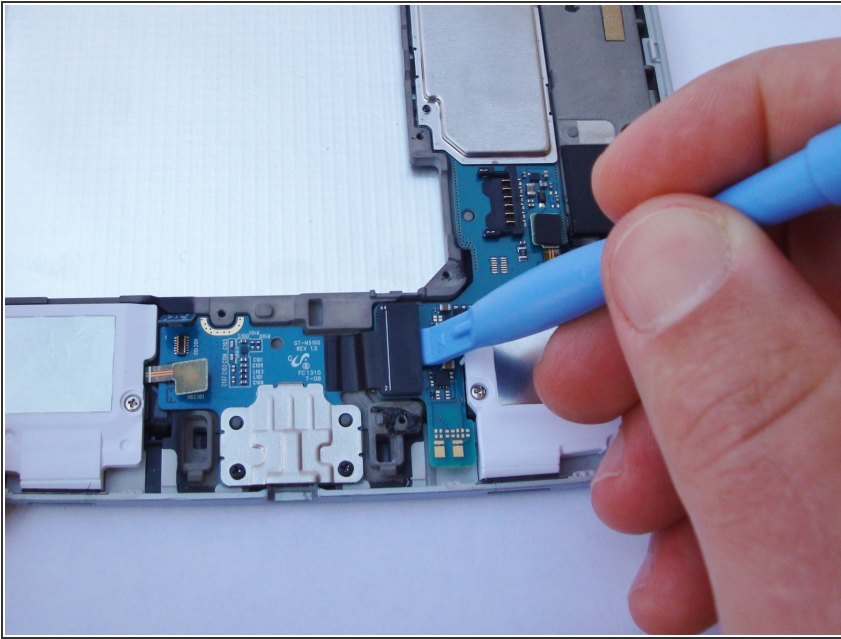
- Gently lift up the teal connector on the left side of the board.

Step 10



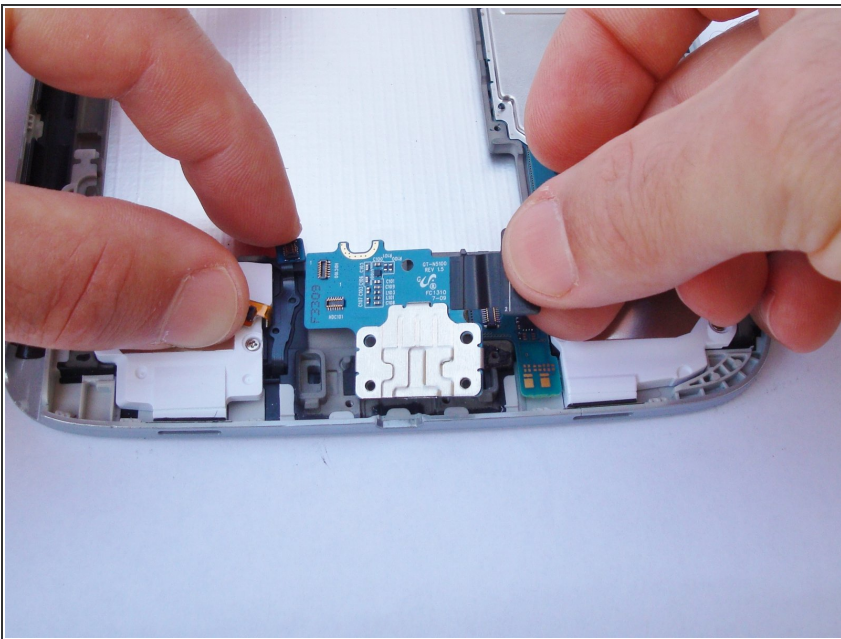
- Gently pry off the silver plate.

Step 11



- Gently lift up the large black connector on the right side of the component. This is the connector that was underneath the silver plate removed in the previous step.

Step 12



- Remove micro USB Port from its housing.

To reassemble your device, follow these instructions in reverse order.