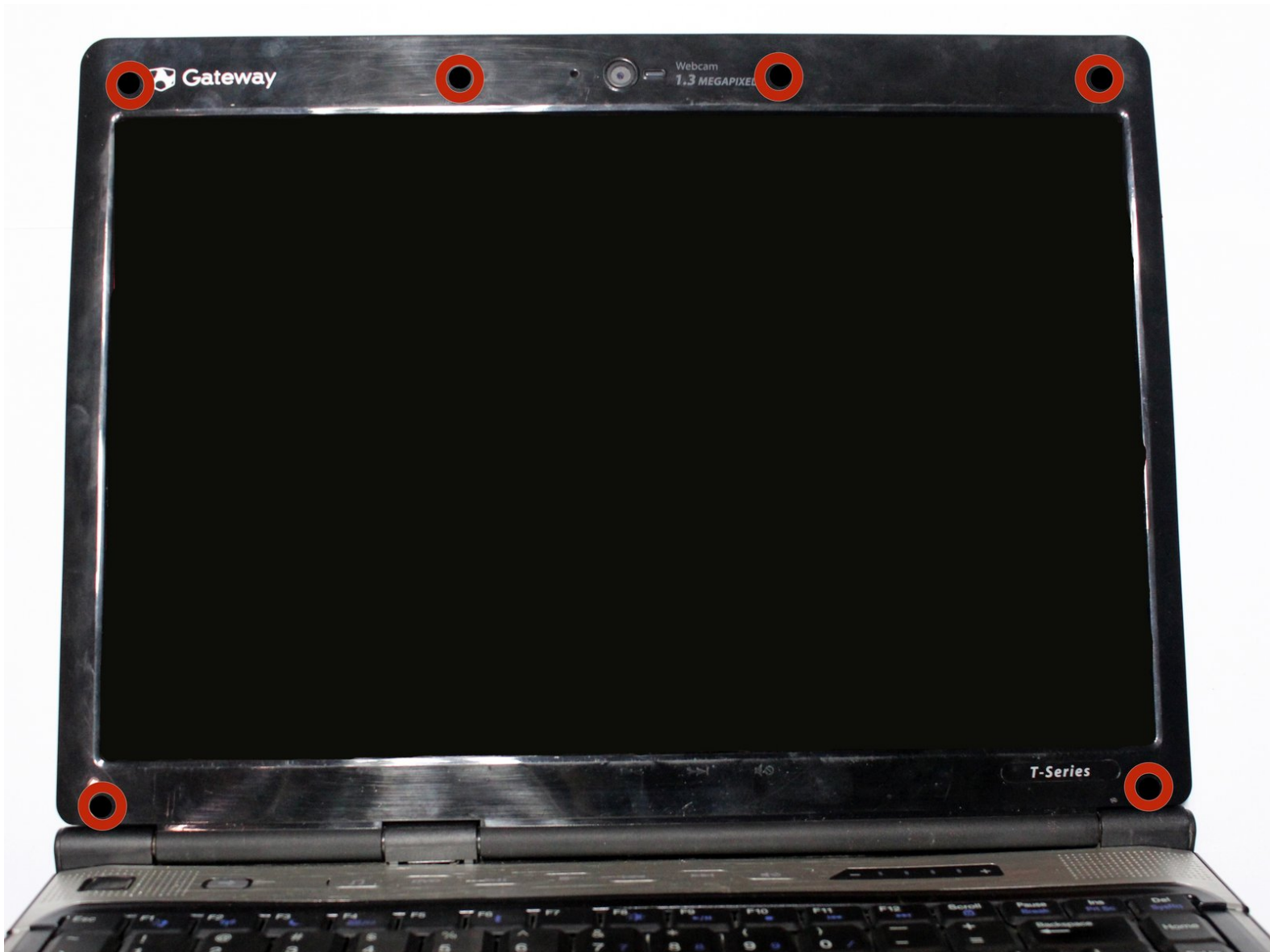




Gateway W350I Display Replacement

If you have a broken display, use this step-by-step guide to explain how to replace the LCD screen in your Gateway W350I laptop.

Written By: Samuel Newton



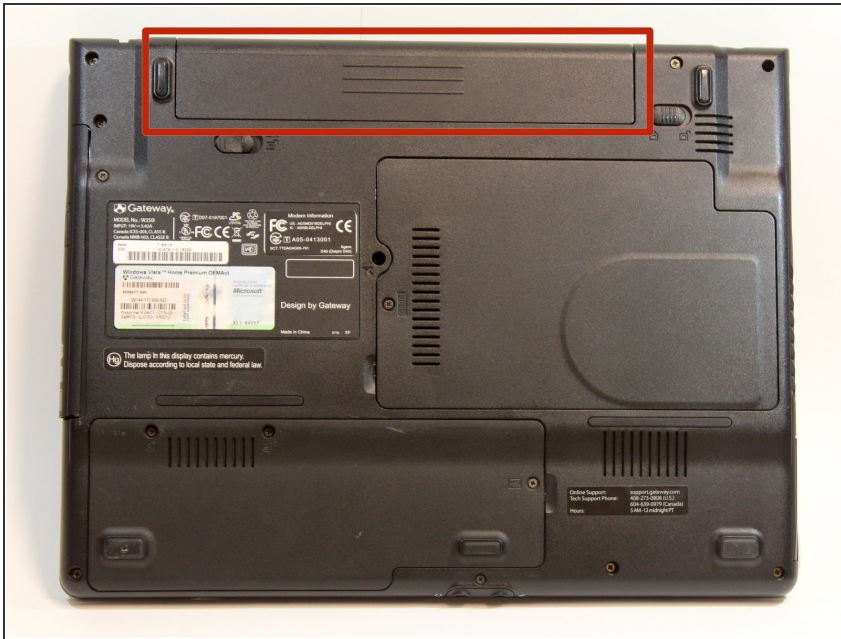
INTRODUCTION

This repair will be needed in circumstances where the screen on your laptop stops working properly. If software adjustments do not fix the issue, replacing the display with a new screen should correct the display issue.

TOOLS:

- [iFixit Opening Tools](#) (1)
 - [Phillips #0 Screwdriver](#) (1)
 - [Tweezers](#) (1)
-

Step 1 — Battery Access



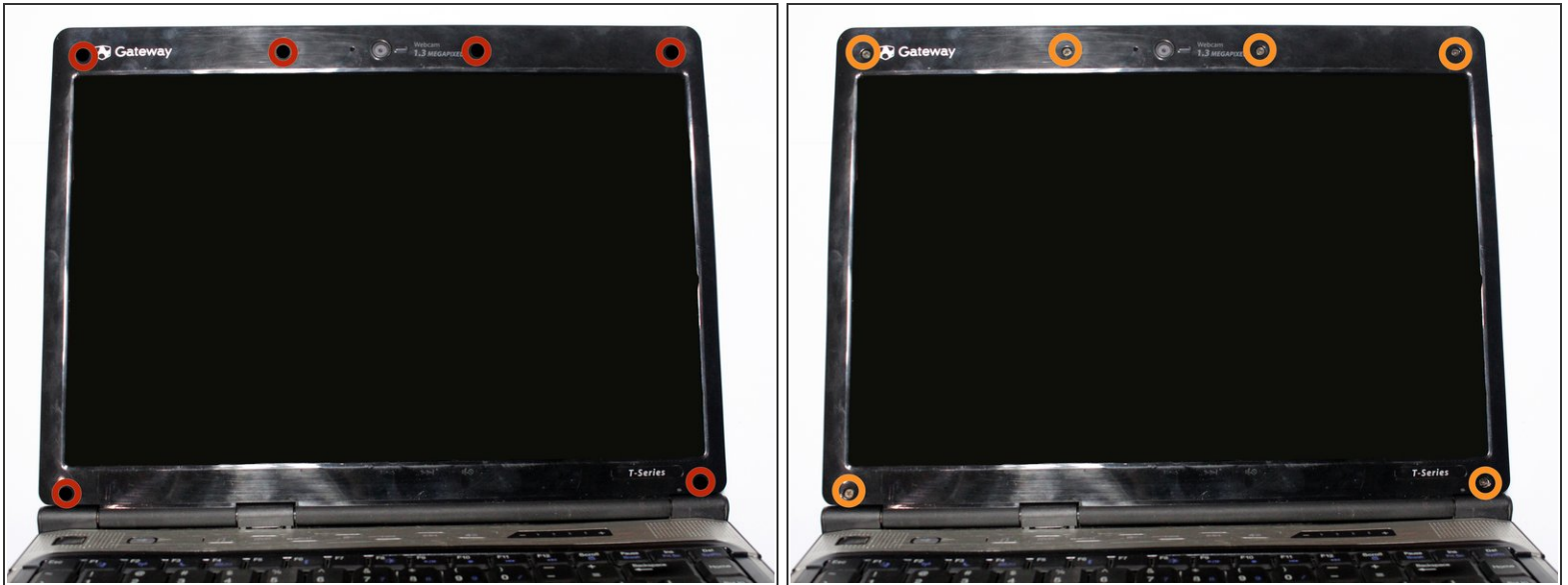
- Turn the laptop upside down and position it as shown in the image.

Step 2 — Unlocking the Battery



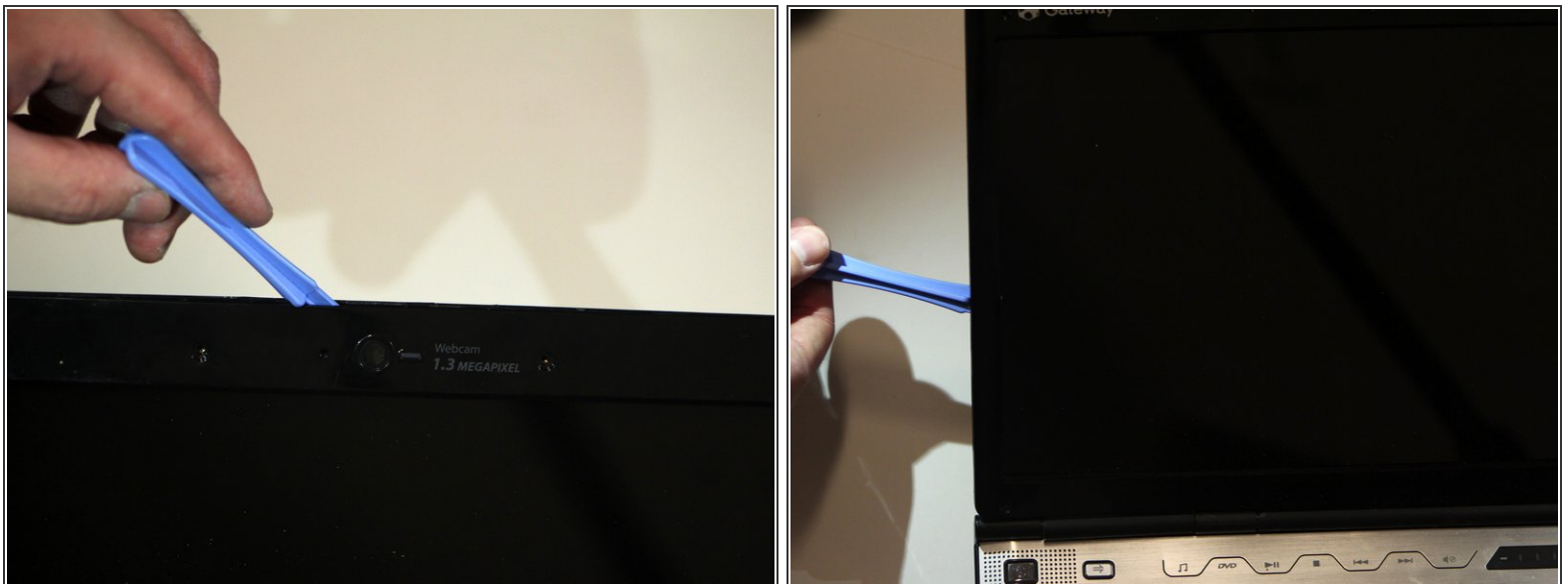
- Slide the locking switch towards the open lock picture.
- Hold the release switch in the unlocked position while simultaneously pushing the battery away from the laptop.
- Once the laptop is disengaged, completely remove the battery from the laptop.

Step 3 — Remove Rubber Protectors & Screws



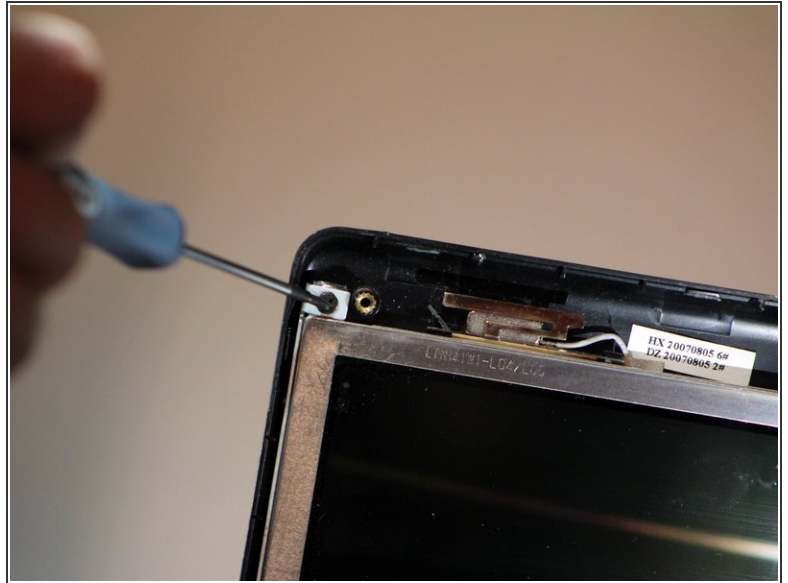
- Pry the six black rubber protectors out of the screw holes.
- Remove all six of the 4mm Phillips #0 screws that were covered by the rubber protectors.

Step 4 — Separate Plastic Casing



- Separate the plastic screen casing from the laptop lid by inserting a plastic opening tool. Complete this step around the top and along both sides of the screen.

Step 5 — Remove Bracket from Laptop Lid



- Remove the two 4mm Phillips #0 screws located at the top that fasten the screen bracket to the laptop.

Step 6 — Remove LCD Screen from Bracket



- Separate the bracket and the screen from its original position within the lid of the laptop.
- Remove the four 4mm Phillips #0 screws on the sides of the bracket that hold the LCD screen.

Step 7 — Remove Video Cable



- Detach the video cable that is attached to the laptop from the back of the screen.
- ⓘ Be careful while removing the video cable as it is very delicate.

Step 8



- Disconnect the camera connector from the circuit board to completely free the screen.

To reassemble your device, follow these instructions in reverse order.