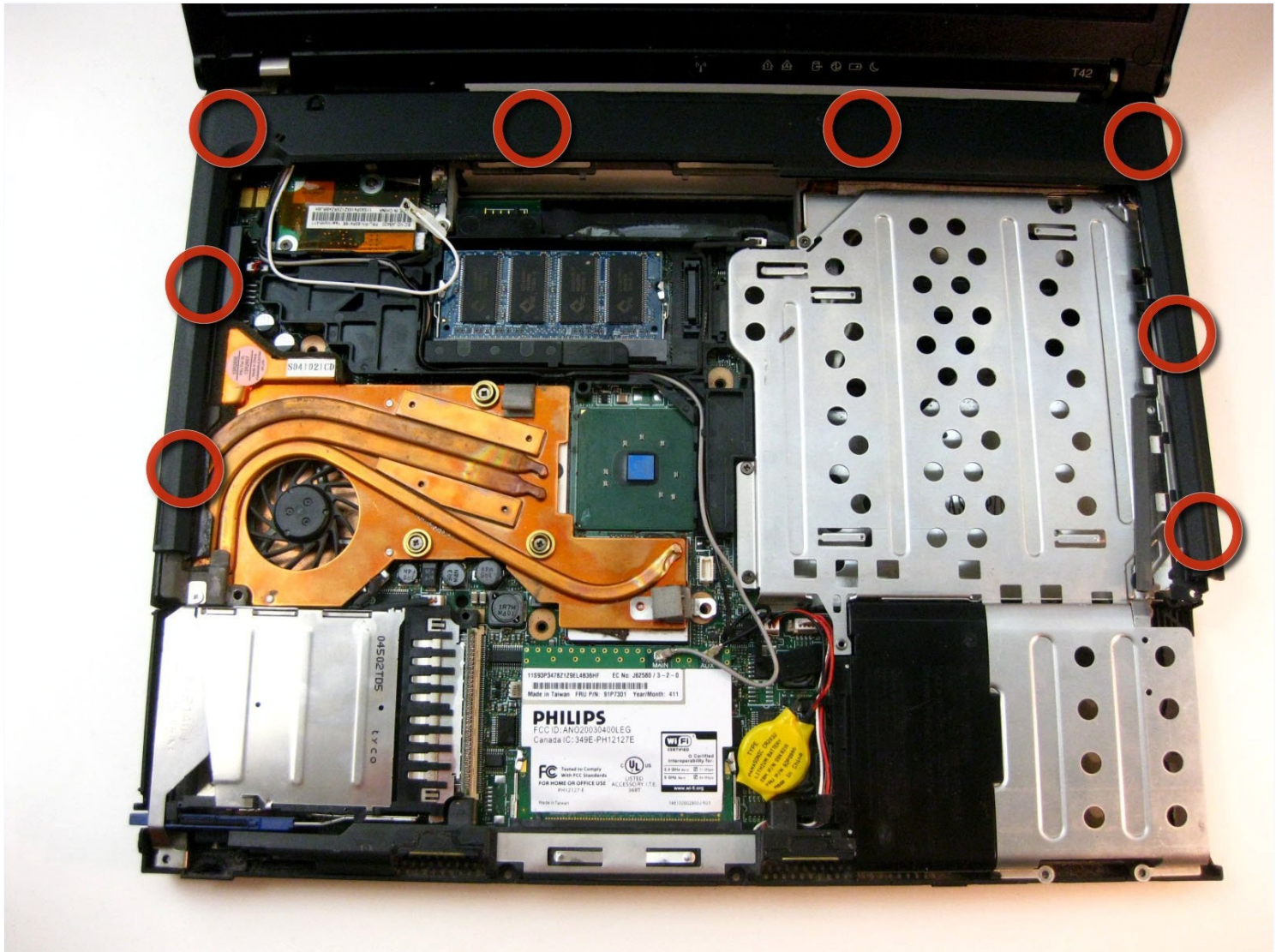




Disassembling IBM ThinkPad T42 Plastic Edge Cover

This guide provides instructions on how to...

Written By: Gerald Watanabe



INTRODUCTION

This guide provides instructions on how to remove the edge cover of the IBM ThinkPad T42. Removing the edge cover offers optimal access to the ThinkPad's inner mechanisms including the Wi-Fi Card, fan, speakers and more! This can be useful for cleaning purposes, refurbishment or total disassembly of the device.

TOOLS:

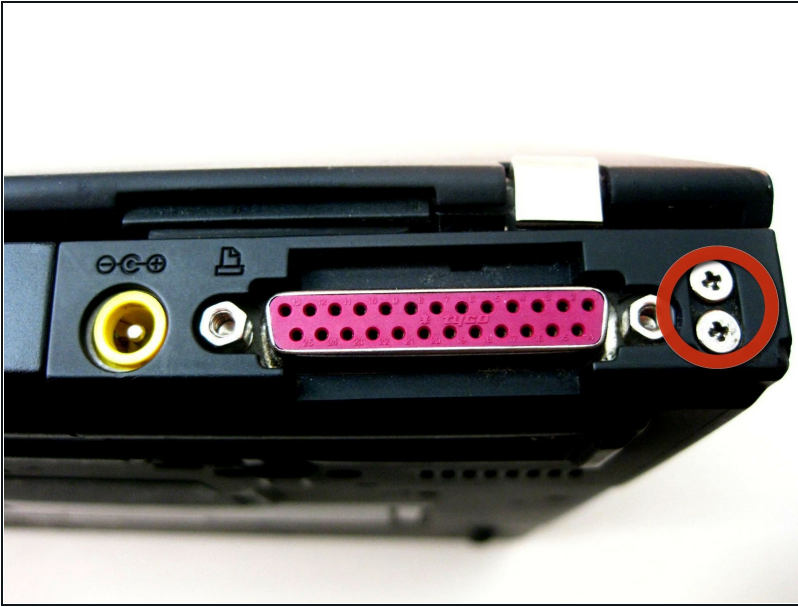
Phillips #0 Screwdriver (1)

Step 1 — Bottom cover



- Using a Phillips #0 screwdriver, identify and unscrew the twenty screws located on the underside of the T42.

Step 2 — Rear screws



- Unscrew the four Phillips screws located on either side of the rear of the T42 (there are two located on each end.)

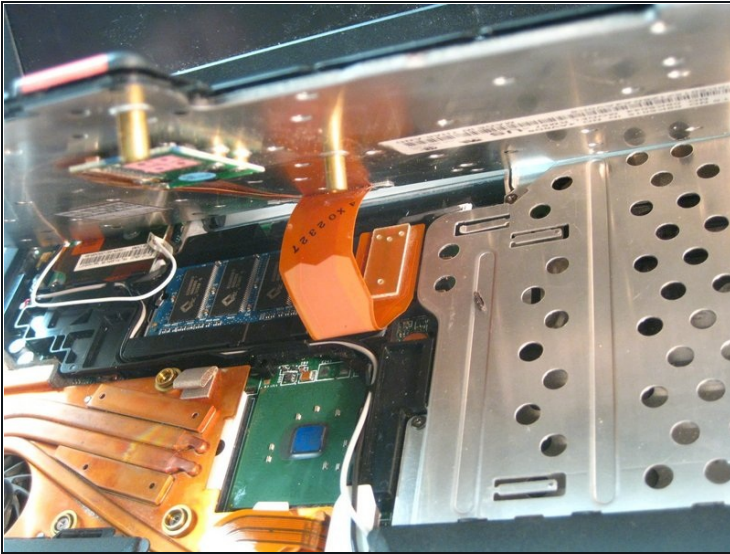
Step 3 — Keyboard and Trackpad



- Flip the laptop over and open the screen to access the keyboard and trackpad.
- ① The keyboard and trackpad are connected to the motherboard. Before removing the keyboard and trackpad, disconnect both components from the motherboard, as shown in the following step.

⚠ The bezel and keyboard will be loose, be careful.

Step 4



- Carefully maneuver the palm rest away from the keyboard, as both the keyboard and palm rest/trackpad will come off together.

⚠ Remember, both the keyboard and trackpad have connectors to the motherboard. Disconnect these before completely removing either component.

Step 5 — Plastic Edge Cover



- Starting from the bottom right, carefully pry off the bezel. Use a spudger or flathead screwdriver if assistance is needed.

To reassemble your device, follow these instructions in reverse order.