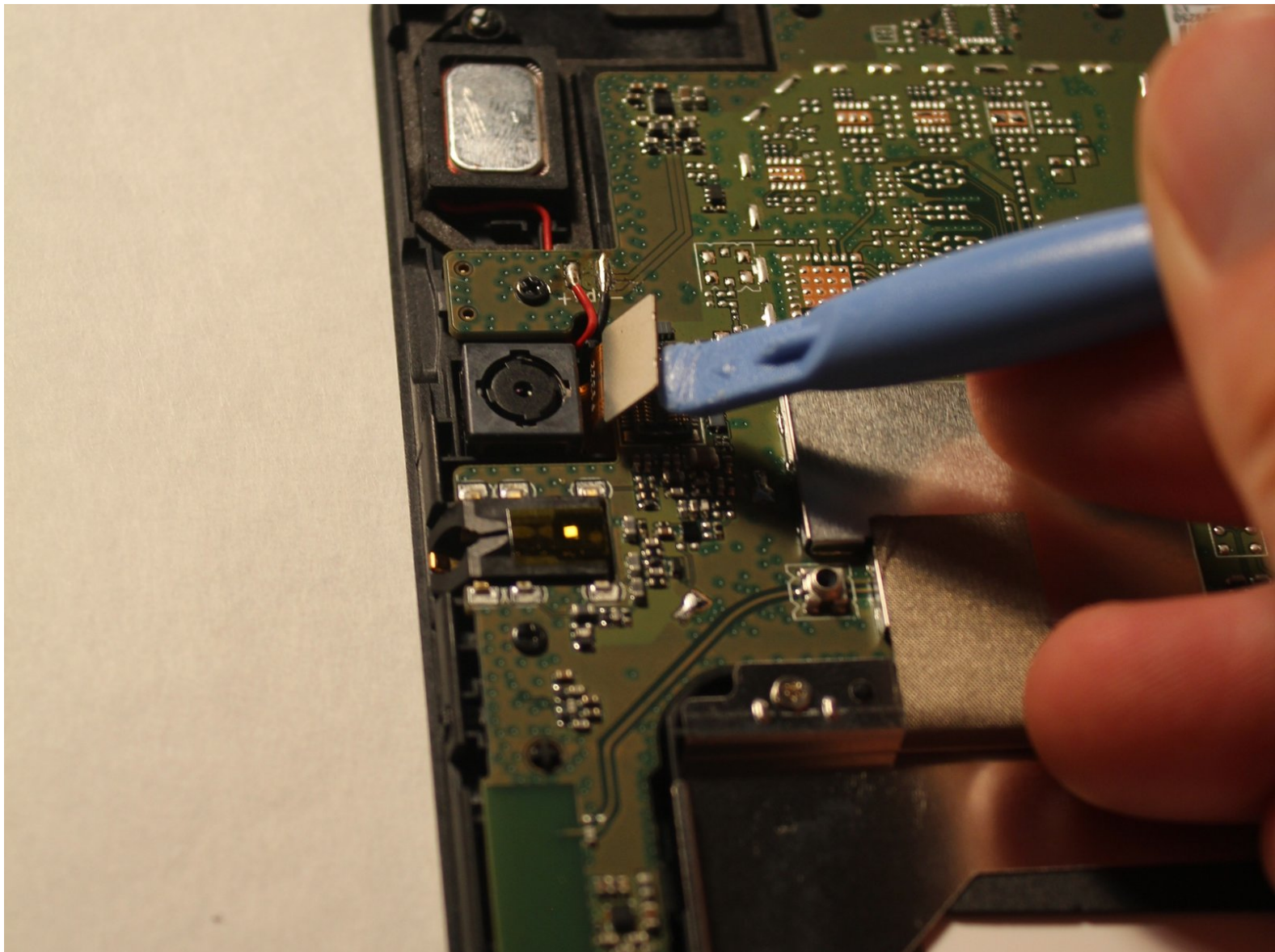




Lenovo Ideatab S6000 Rear Camera Replacement

This is a guide to help users replace their rear camera.

Written By: Josiah Speed





TOOLS:

- [Spudger](#) (1)
- [Phillips #00 Screwdriver](#) (1)
- [iFixit Opening Tools](#) (1)

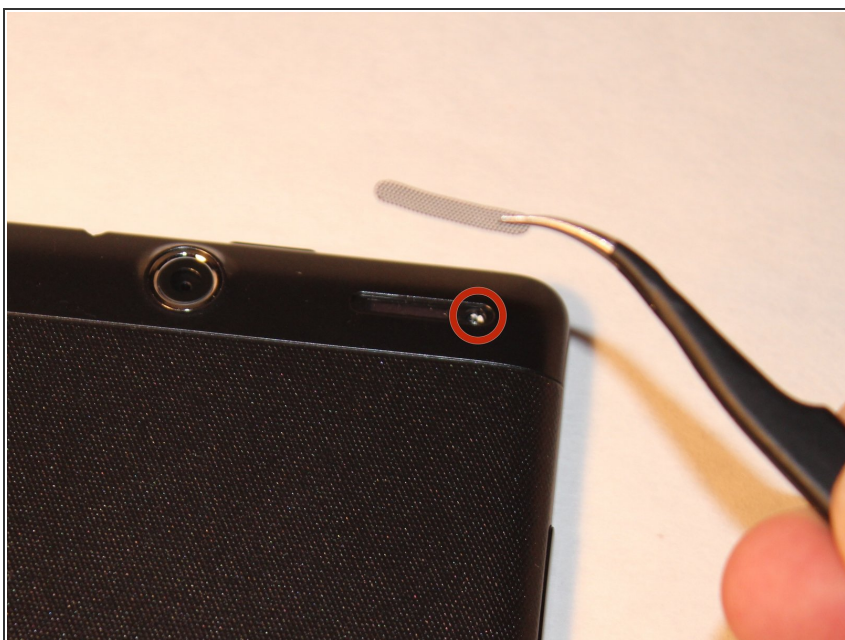
Step 1 — Battery



- Remove the speaker screens by working them loose with a plastic opening tool. You may need to first loosen them with tweezers or a craft knife.

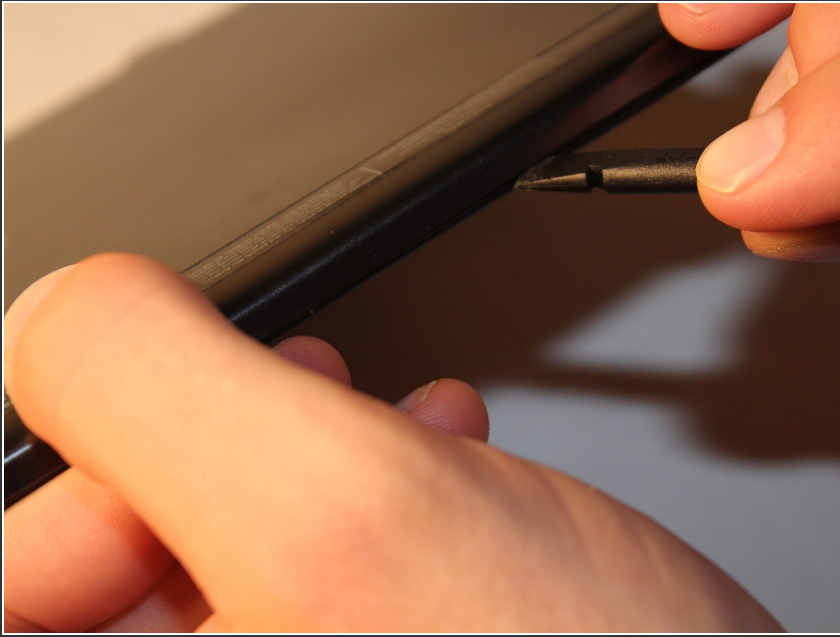
⚠ These screens are held in place by glue that is hard to remove. Please take your time to ensure that this step is done correctly.

Step 2



- Remove the screws from both of the spots that were covered.

Step 3



⚠ DO NOT USE A METAL TOOL FOR THIS.

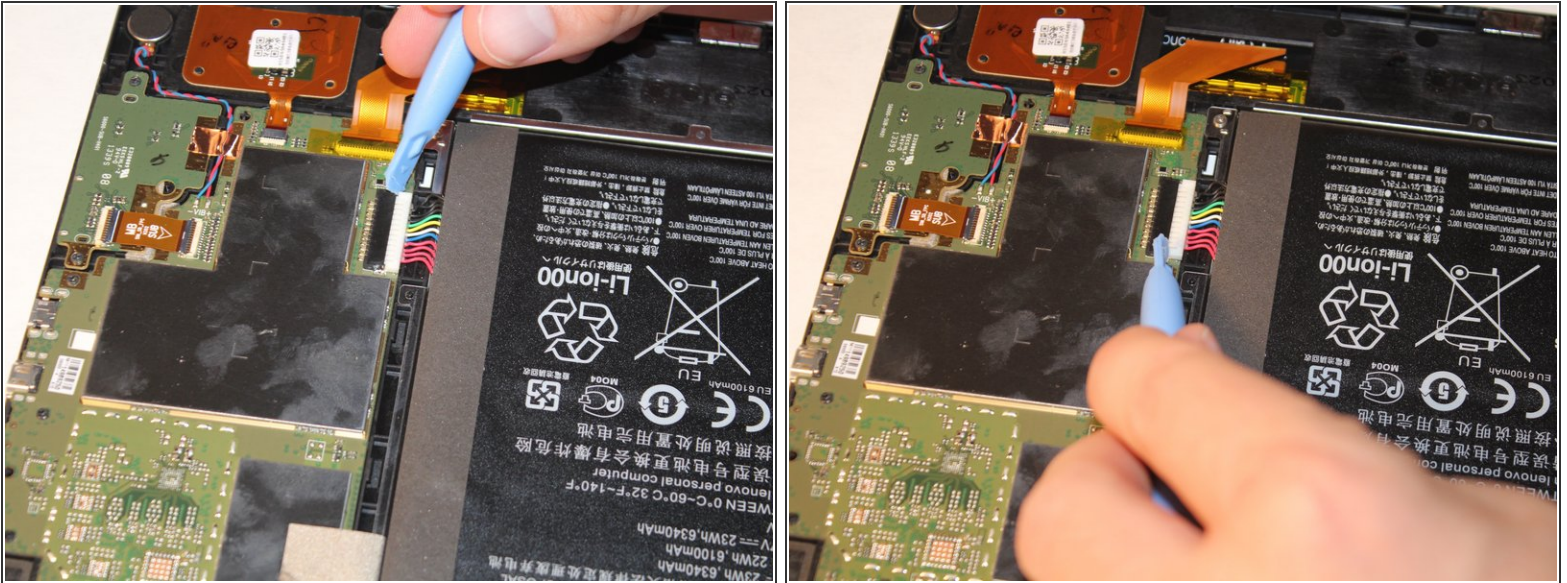
- Go all around the casing, prying the screen away from the backing with the spudger.
- It will make a popping sound each time one of the lock tabs is disconnected.
- ⓘ Take your time as you move all around the device when prying the backing off.

Step 4



- Pull off the plastic that is covering the battery cable.

Step 5



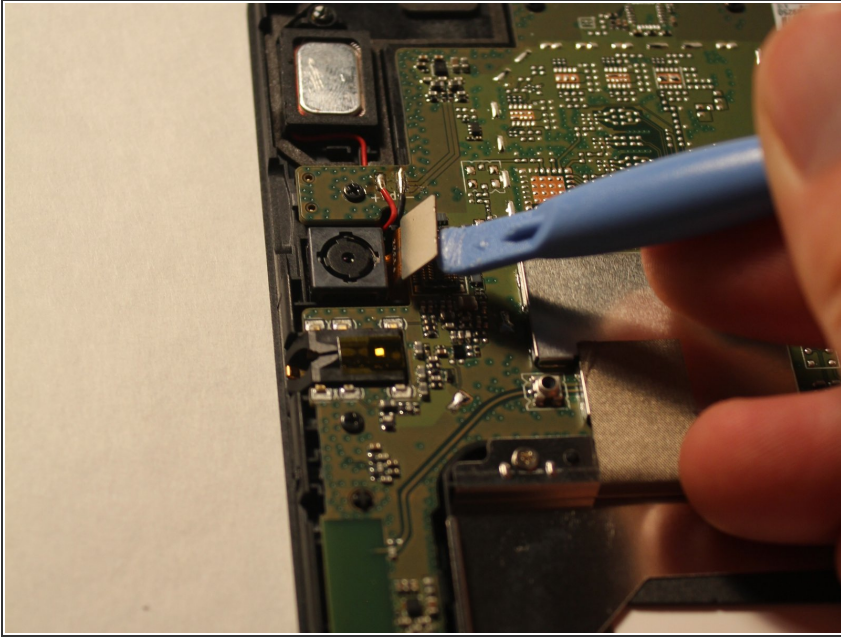
- Using either the plastic opening tool or your fingers, gently pull on both sides of the plug to release it.

Step 6



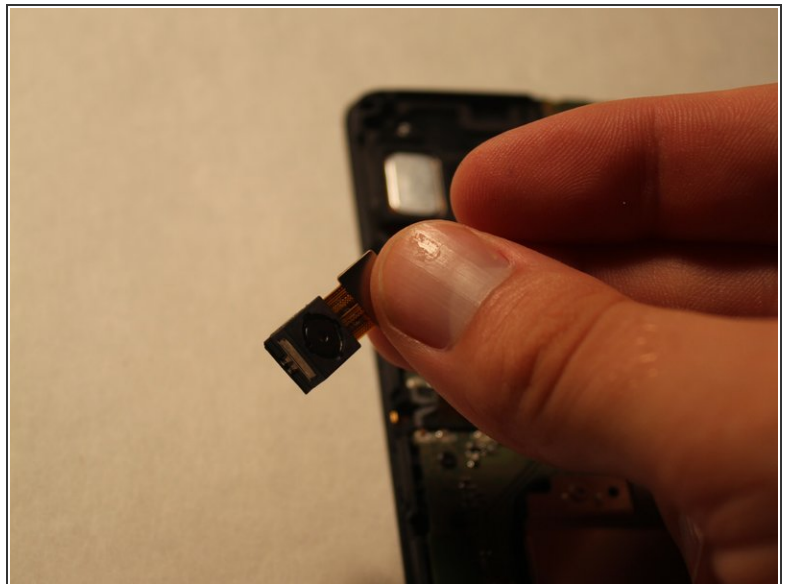
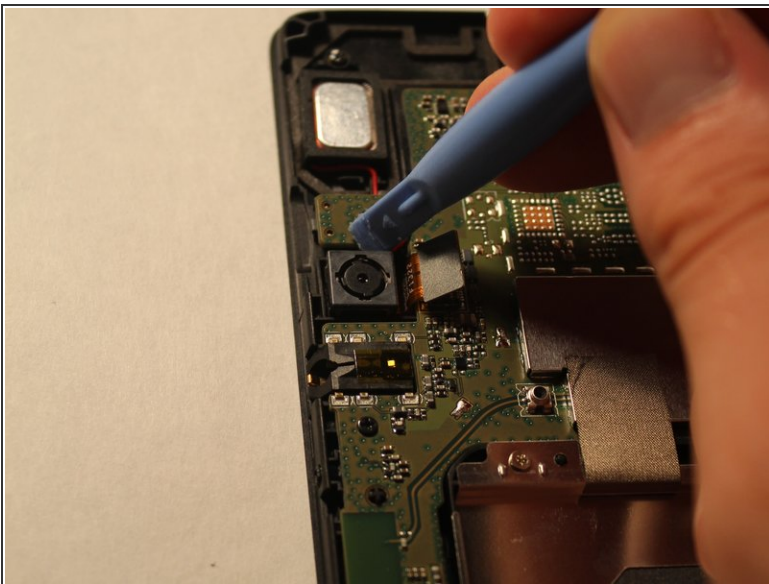
- Remove the battery by grabbing the tab shown and pulling up.
- The battery is held to the device by adhesive. Pull the battery up from the tab and it will lift out with a bit of effort.

Step 7 — Rear Camera



- Gently lift up on the metal connector plate.

Step 8 — Removing Rear Facing Camera.



- Push against the camera from all sides to loosen it from its position.
- (i) NOTE:** The camera is connected by glue, so take your time, it will come out.
- (🔧)** If you wish to replace the camera simply plug in the new camera, and follow the guide in reverse.

To reassemble your device, follow these instructions in reverse order.