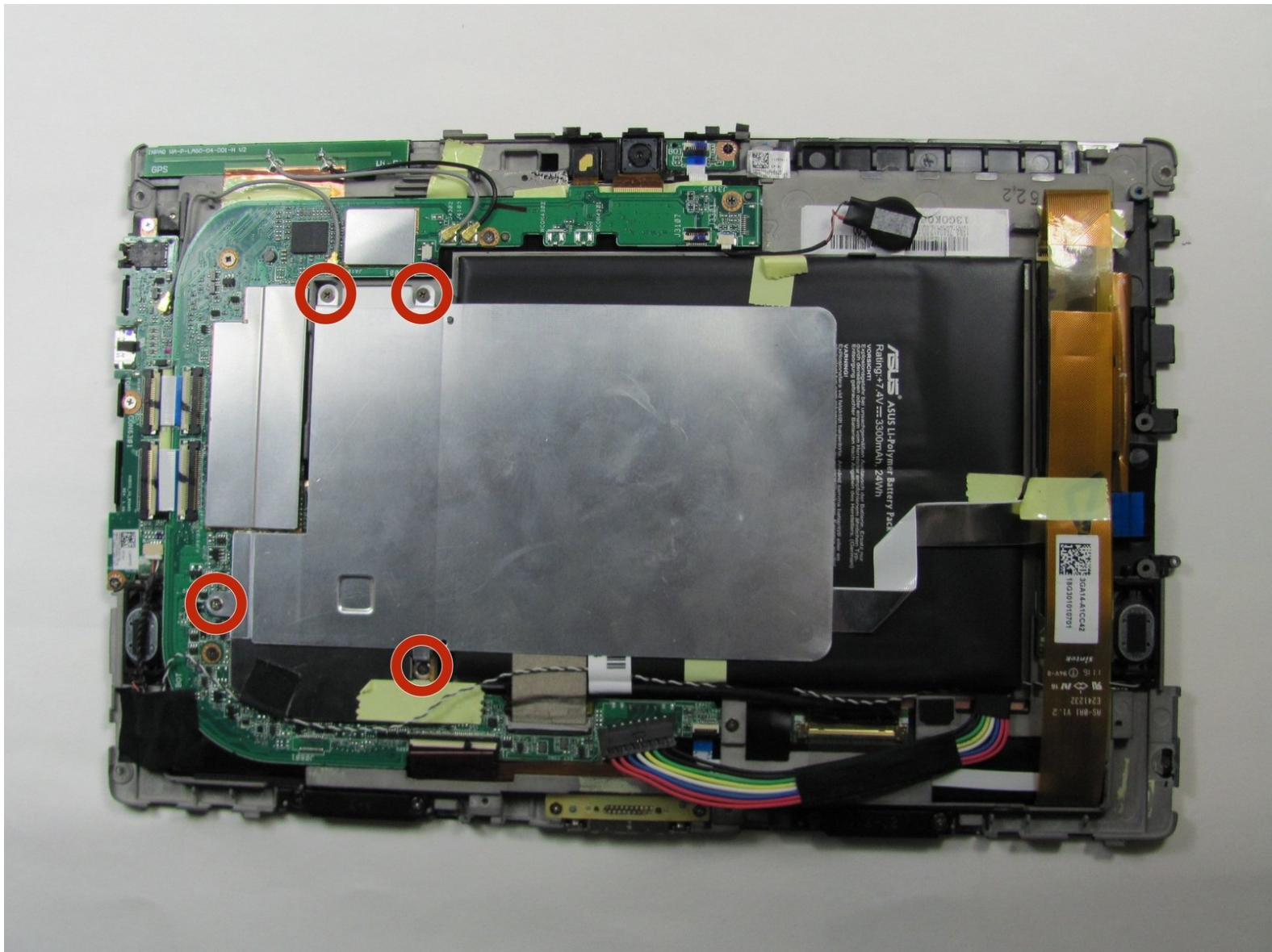




# ASUS Transformer TF101 Battery Replacement

This guide describes the procedure of replacing the tablet battery.

Written By: Sandy Babich



# INTRODUCTION

If your battery no longer holds a charge or you suspect it might be faulty, use this guide to replace it.



## TOOLS:

- [iFixit Opening Tools](#) (1)
  - [Phillips #00 Screwdriver](#) (1)
  - [T5 Torx Screwdriver](#) (1)
-

## Step 1 — Back Panel



- Use T5 Torx Screwdriver to remove two 4.5 millimeter T5 screws on either side of the port on the bottom of the tablet.

## Step 2



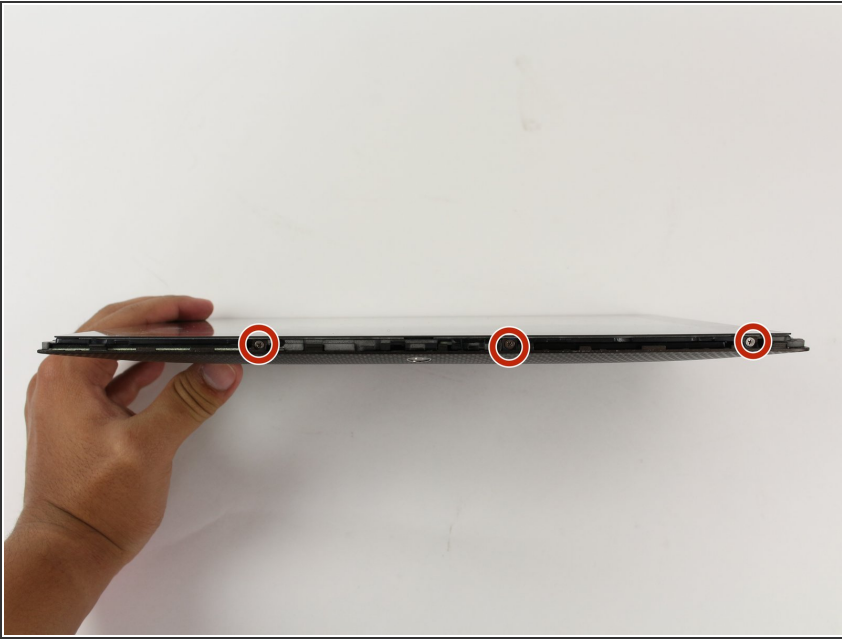
- Use the Plastic Opening Tool to pry between the main tablet body and the outer rim casing. Remove the outer rim casing by prying all the way around the device and pulling the rim upward.
- ⓘ The physical buttons are located on the outside of the rim on the right side, proceed with the guide to locate internal buttons.

## Step 3



- Remove the four 2 millimeter Phillips #00 screws at the corners of the tablet.

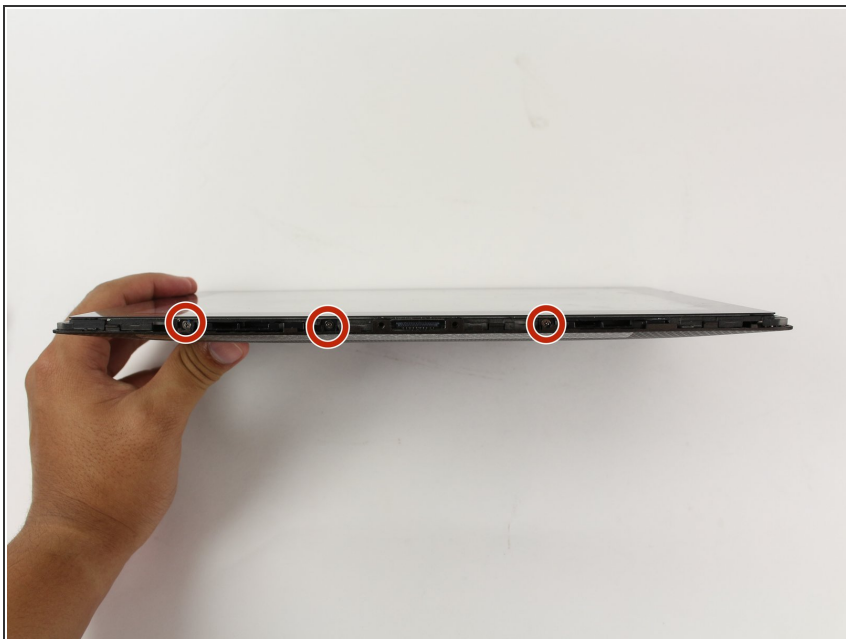
## Step 4



- Use a Phillips #00 Screwdriver to remove the three 3 millimeter screws securing the front panel to the back panel found above the camera area, on the top portion of the tablet.



## Step 5



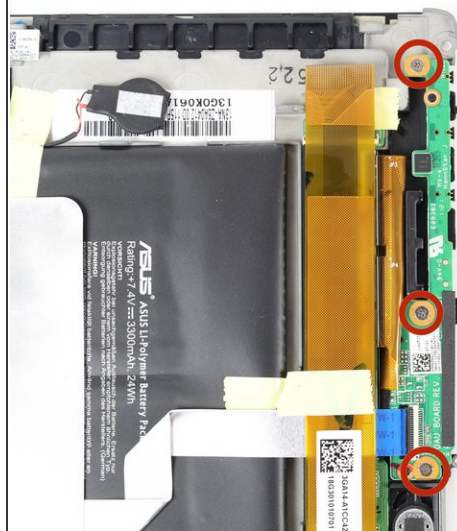
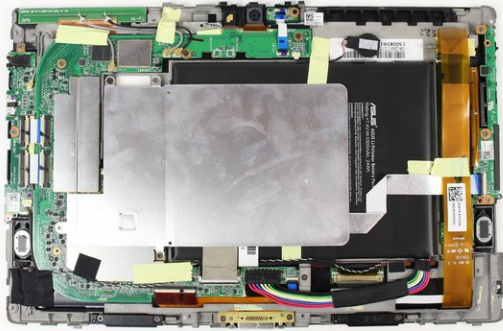
- Use a Phillips #00 Screwdriver to remove the three 3 millimeter screws securing the front panel to the back panel found on the bottom portion of the tablet near the port.

## Step 6



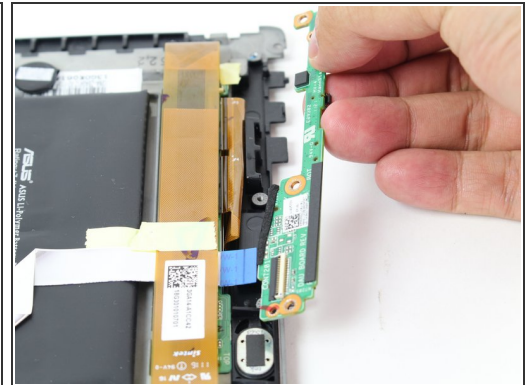
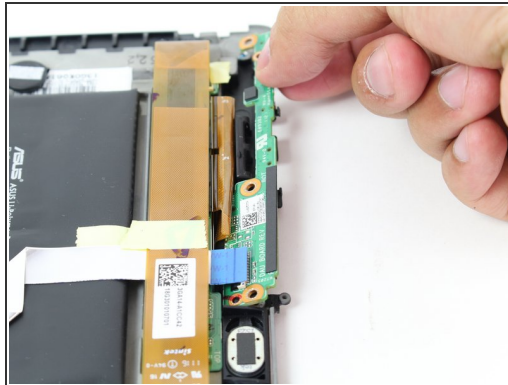
- Remove back panel by pulling away from the remaining device.

## Step 7 — Remove button screws



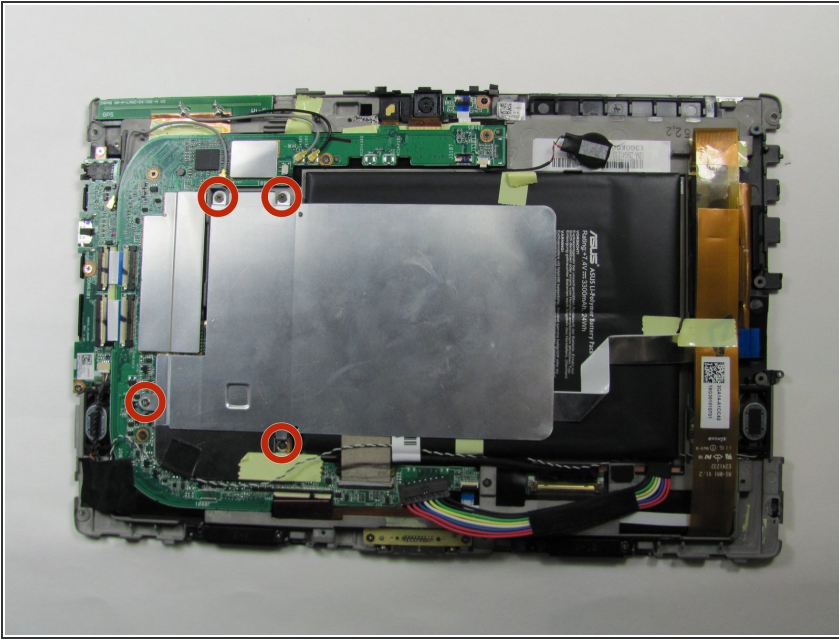
- Use a Phillips #00 Screwdriver to remove the three 3 millimeter screws securing the buttons to the back panel.

## Step 8 — Locate and lift button clip



- Use Plastic Opening Tool to pry off the clip located towards the bottom of the button component near the metallic strip with a blue end, capped by the black button clip.
- Remove button component by pulling straight outward from the device.

## Step 9 — Remove screws



- Use Phillips #00 Screwdriver to remove four 3 millimeter screws found on the metal panel.

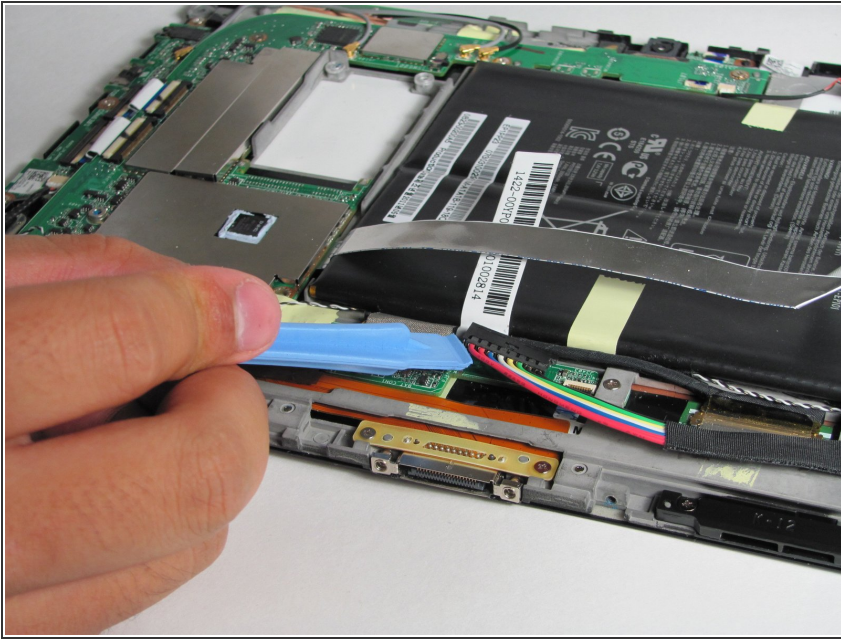
## Step 10 — Remove metal panel



- ⓘ Metal panel is glued to the battery. Remove with care.
- Use Plastic Opening Tool to pry off the metal panel from the battery starting on the right side corners and working around the rest of the panel.

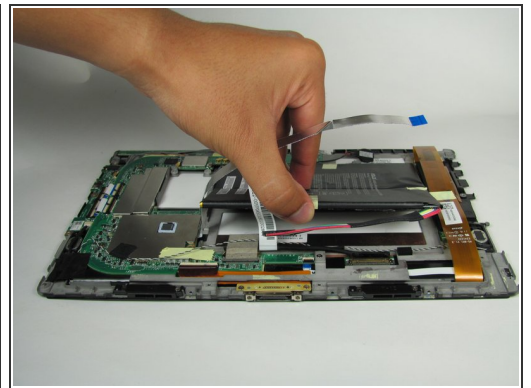
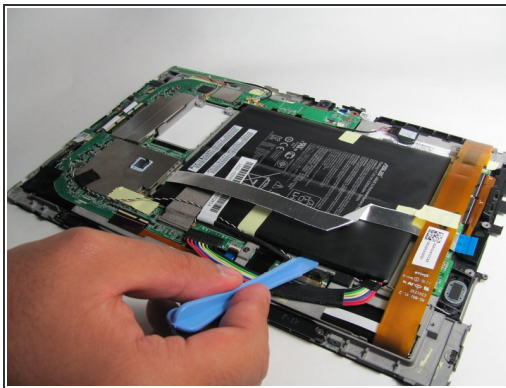
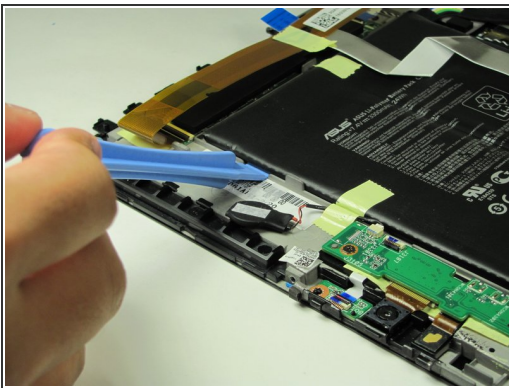


## Step 11 — Detach wires



**⚠ Do NOT** pry the battery connector upward as shown in this photo. Instead, pull the connector straight out (in the direction of the wires).

## Step 12 — Remove battery



**i** Battery is glued to device. Remove with care.

- Peel off tape from around the edges of the battery.
- Insert Plastic Opening Tool into slot on side of battery found near the wire bundle.
- Lift up the battery off of the device.

To reassemble your device, follow these instructions in reverse order.

