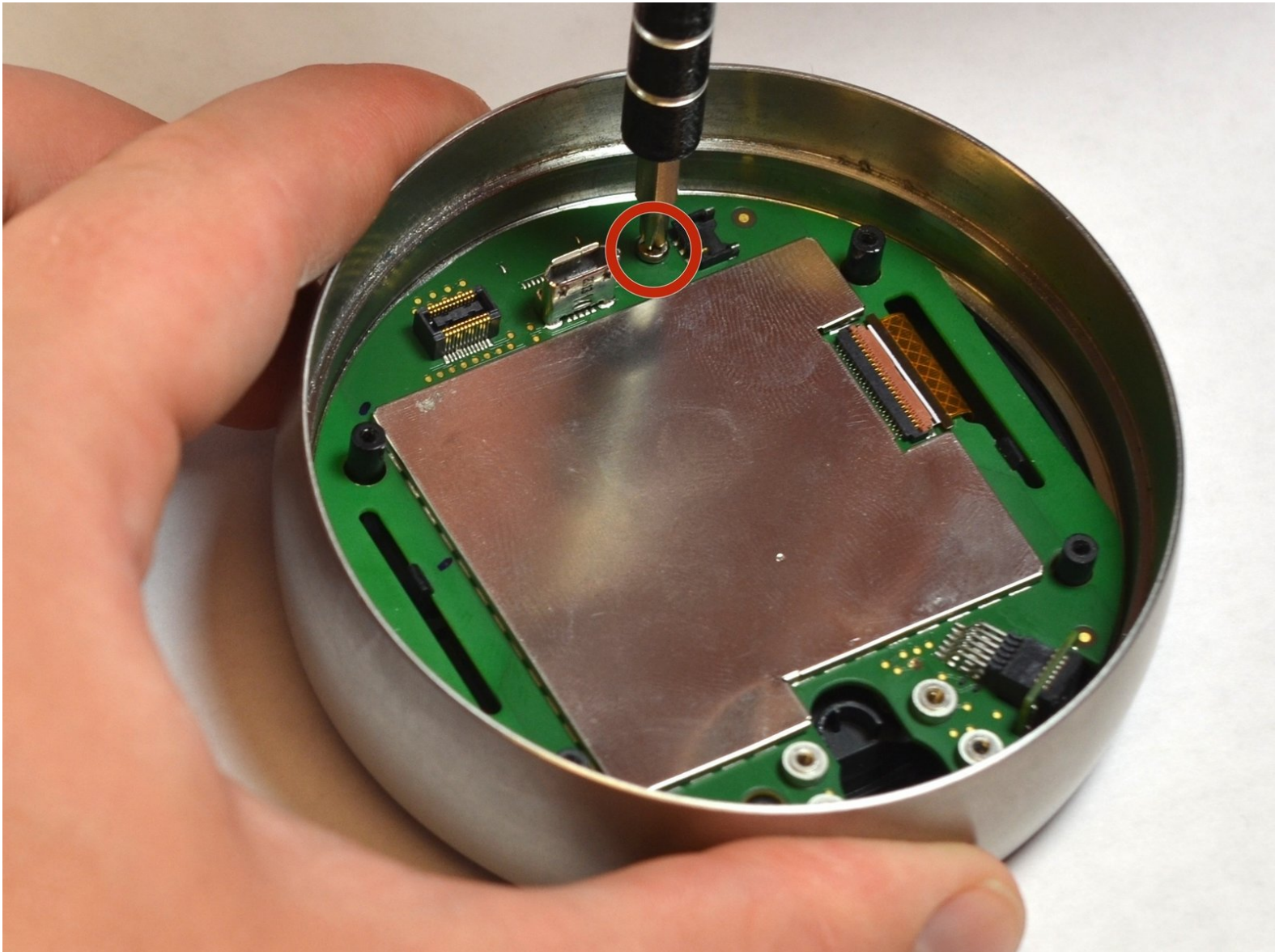




# Nest Learning Thermostat 2nd Generation LCD Screen Replacement

Replacing the LCD is necessary if screen is not working on the thermostat.

Written By: Justin Curry



---

## INTRODUCTION

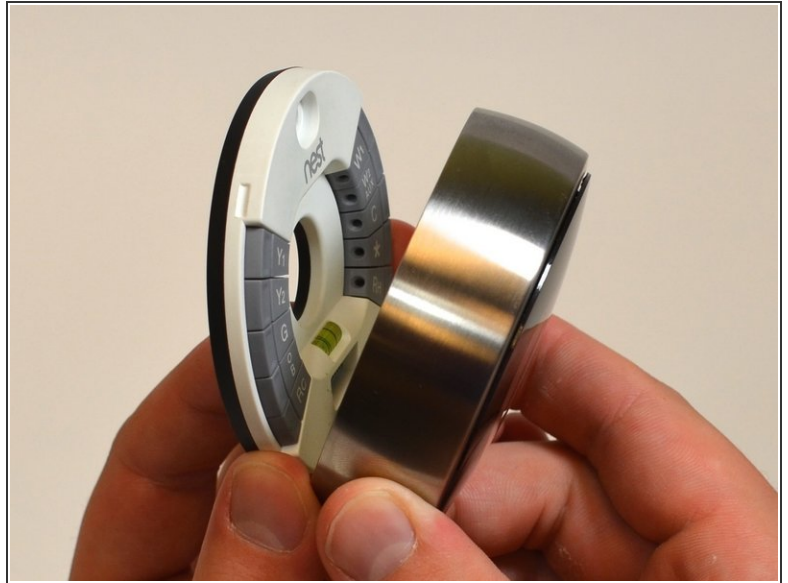
The replacement of the LCD screen is not difficult. The tools need to replace it are the plastic opening tools.



### TOOLS:

- [Phillips #0 Screwdriver](#) (1)
  - [iFixit Opening Tools](#) (1)
  - [Tweezers](#) (1)
-

## Step 1 — Removal from Wall



- Grasp the display's metal outer ring with your fingers and pull directly away from the wall.

## Step 2 — Open Display



- Turn the display over.
- Remove the four 6 mm screws from the back of the display using a Phillips #0 screwdriver.



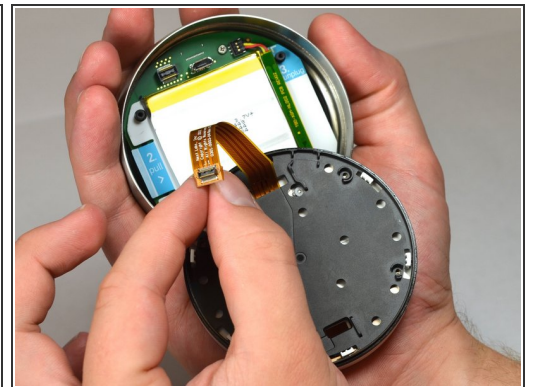
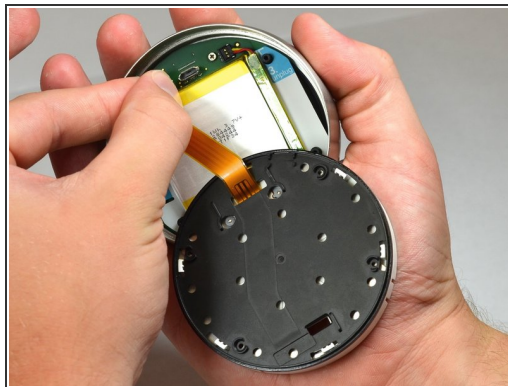
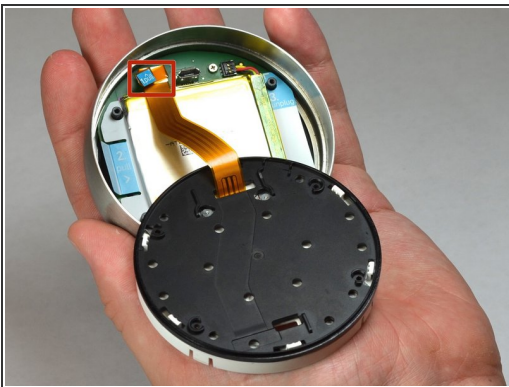
### Step 3 — Remove the back of the display



- Pinch the gray 20-pin connector with your fingers and pull directly away from the display.

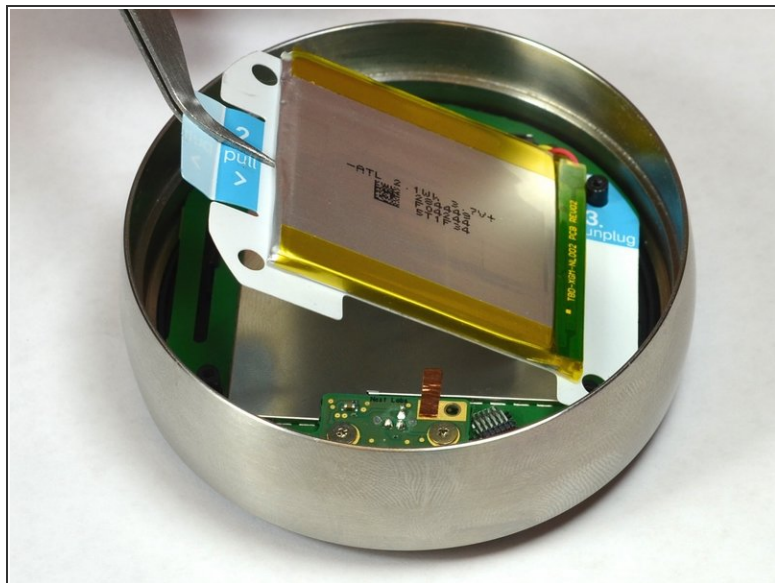
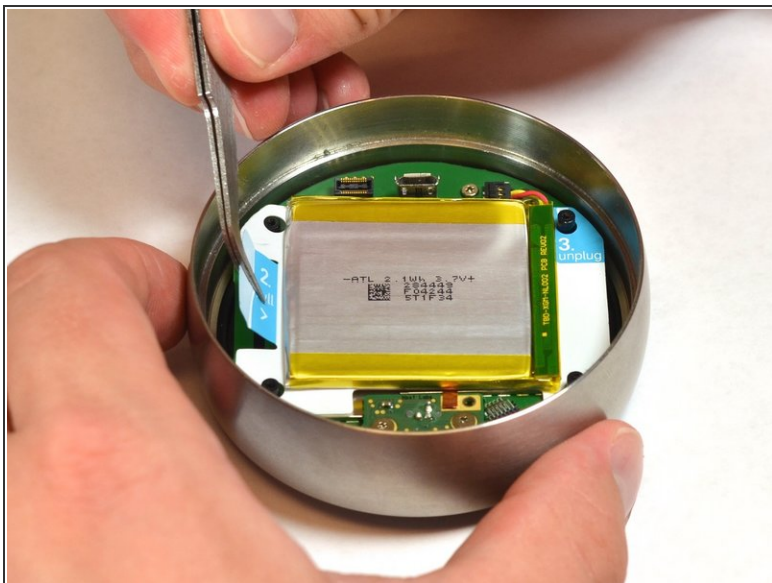
⚠ Do NOT pull too far as there is a ribbon on the back panel connecting the 20-pin connector to the display.

### Step 4 — Disconnect the base connection ribbon cable.



- Locate the blue pull tab at the end of the ribbon which says, "1. Pull".
- Grasp the tab with your fingers and pull directly away from the motherboard.

## Step 5 — Lift battery from the base



- Locate the blue tab which says, "2. Pull".
- Use tweezers to pull the battery up and away from the display.

 Do NOT pull too far, as the battery is still connected to the motherboard and must be unplugged.

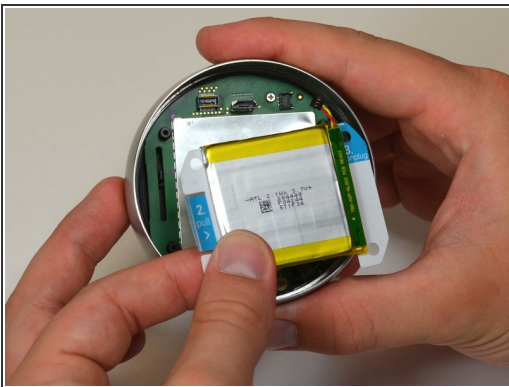


## Step 6 — Disconnect the battery from the motherboard



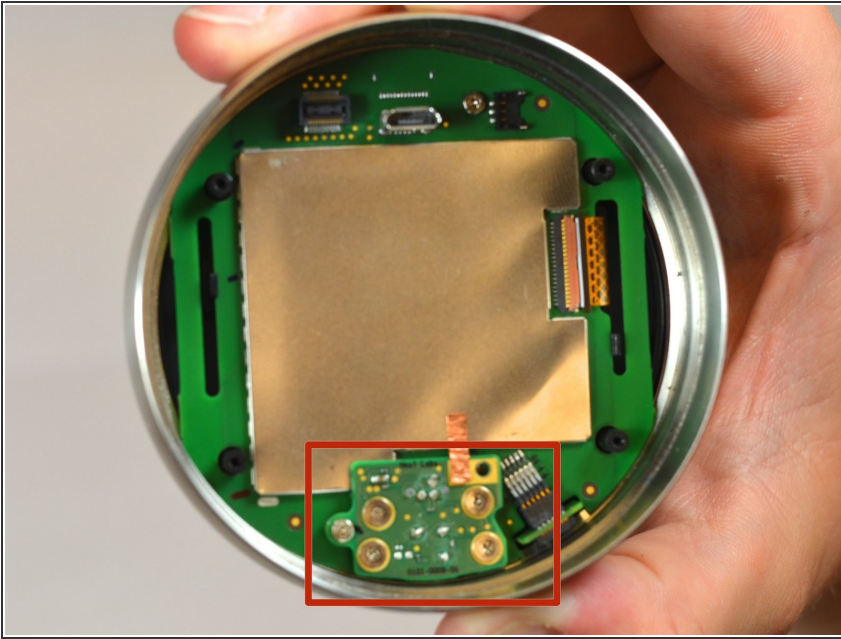
- Locate the blue tab which says "3 unplug".
- Grasp the battery with your fingers. Pull gently directly away from the display to unplug the battery from the motherboard.

## Step 7 — Remove battery from the display



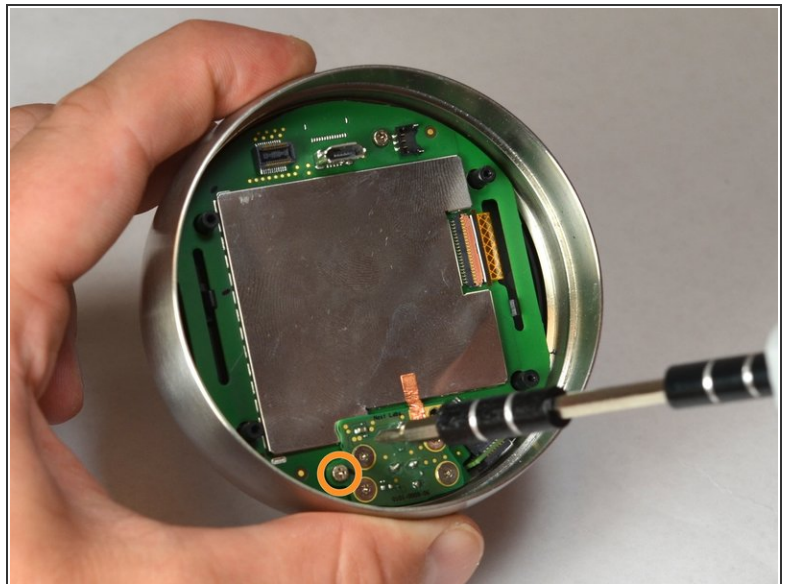
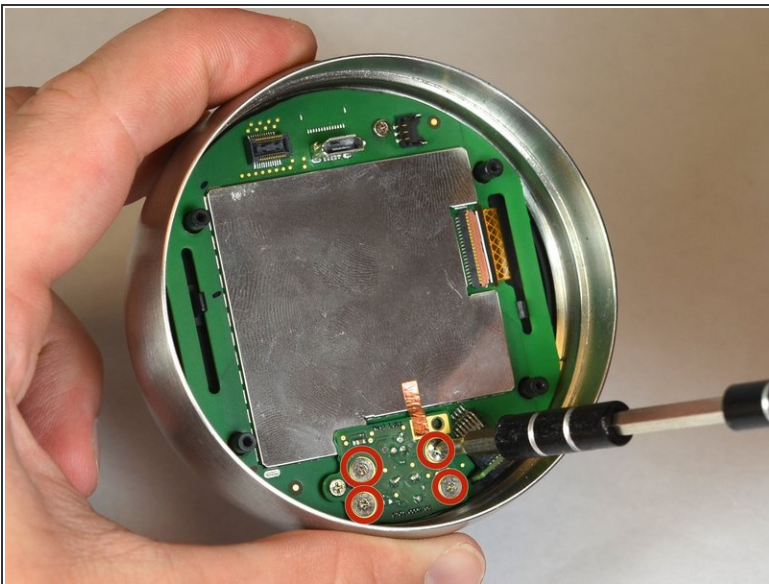
- Grasp the battery with your fingers and pull directly away from motherboard to separate the battery from the display.

## Step 8 — Locate auto-away sensor



- Locate the auto-away sensor.

## Step 9 — Remove screws



- Remove the four 3mm screws with a #0 Phillips screwdriver.
- Remove the one 4mm screw located at the edge of the auto-away sensor. Use a #0 Phillips screwdriver.

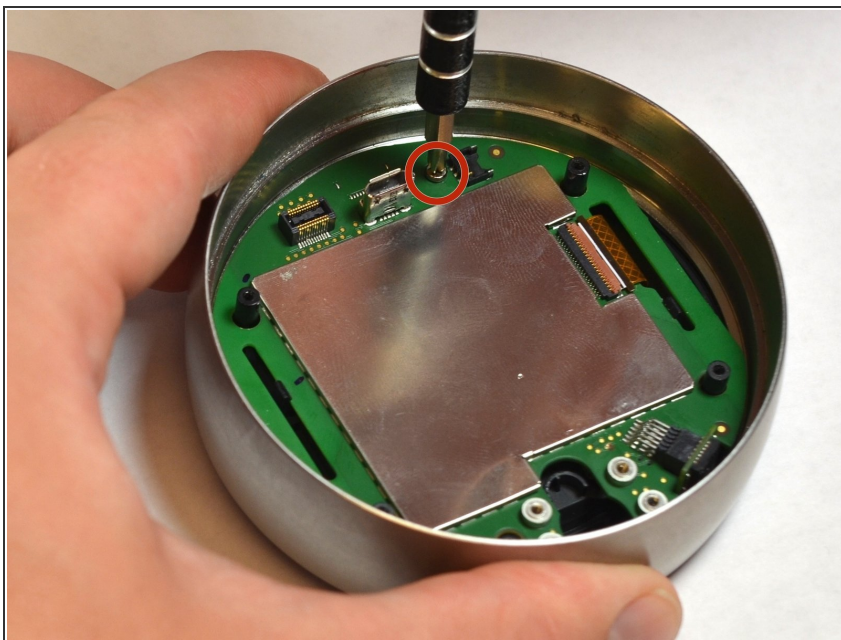


## Step 10 — Remove auto-away sensor



- Lift the auto-away sensor from motherboard using tweezers.
- Peel the copper foil gently from the EMI shield.

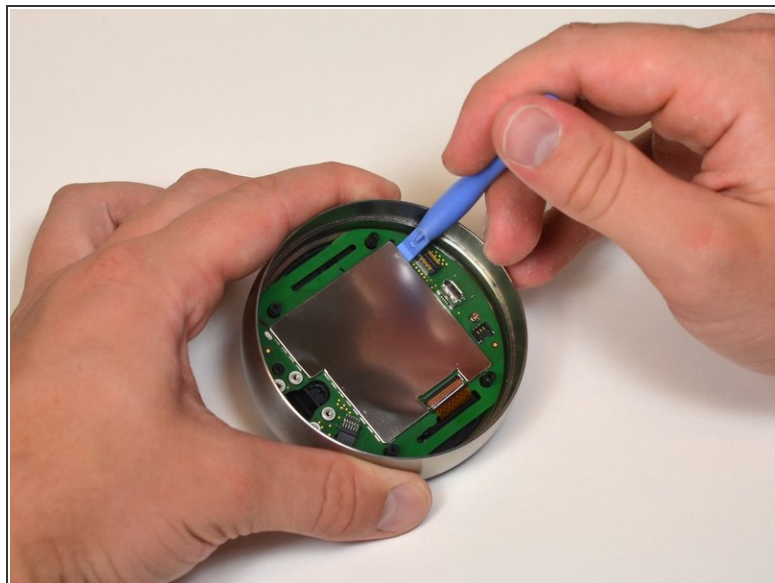
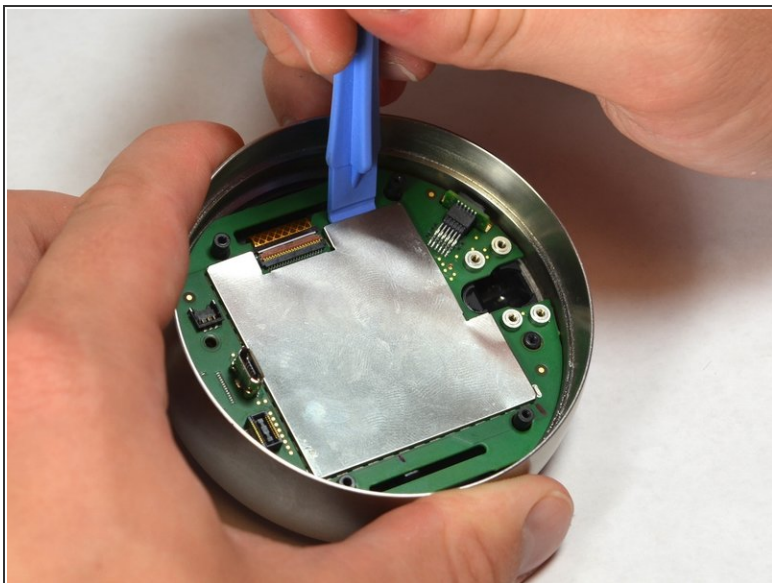
## Step 11 — Remove screw from motherboard



- Remove one 4 mm screw from the motherboard using a #0 Phillips screwdriver.



## Step 12 — Remove EMI shield from motherboard



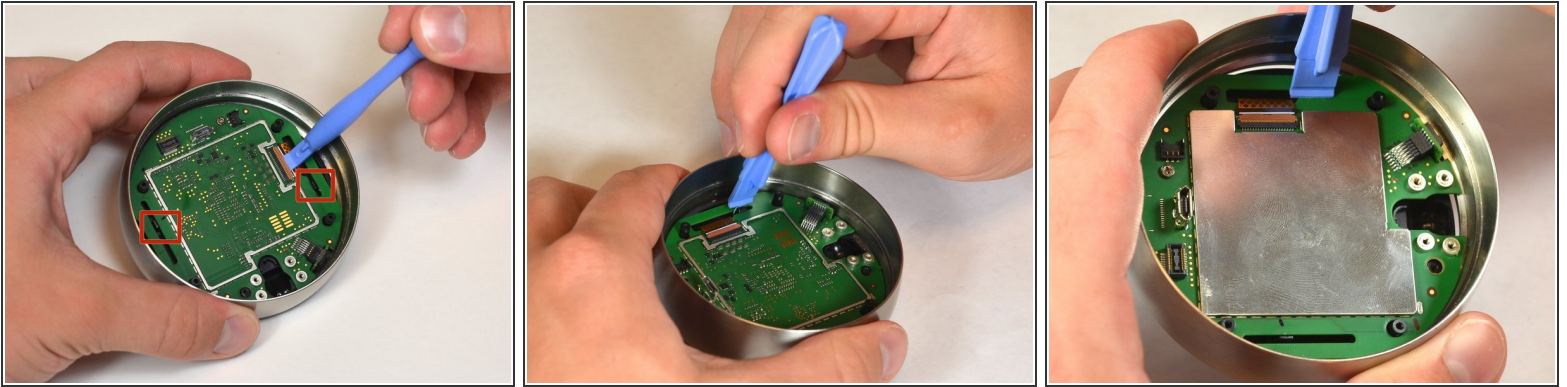
- Remove the EMI shield from the motherboard using the plastic opening tools.

## Step 13 — Disconnect the LCD ribbon from the motherboard



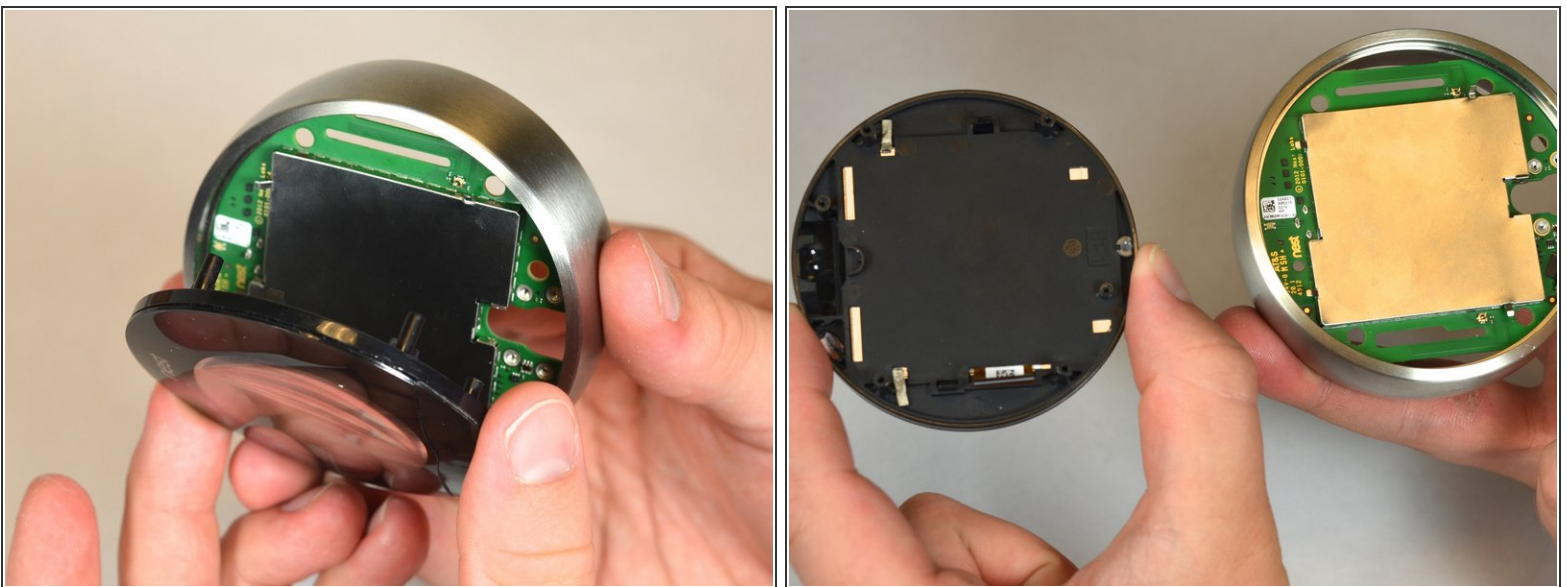
- Unsnap the LCD ribbon from the motherboard gently using the tweezers.

## Step 14 — Disconnect display from motherboard



- Locate the black tabs that hold the display to the motherboard.
- Push the black tabs gently away from the motherboard using the plastic opening tools.

## Step 15 — Remove from motherboard



- Pull the face display gently away from the motherboard.



## Step 16 — Remove bottom of display frame



- ⓘ The front of the glass display and plastic frame is held together by only light adhesive.
- Push the crescent shape bottom of the display away from the plastic frame using the plastic opening tools.

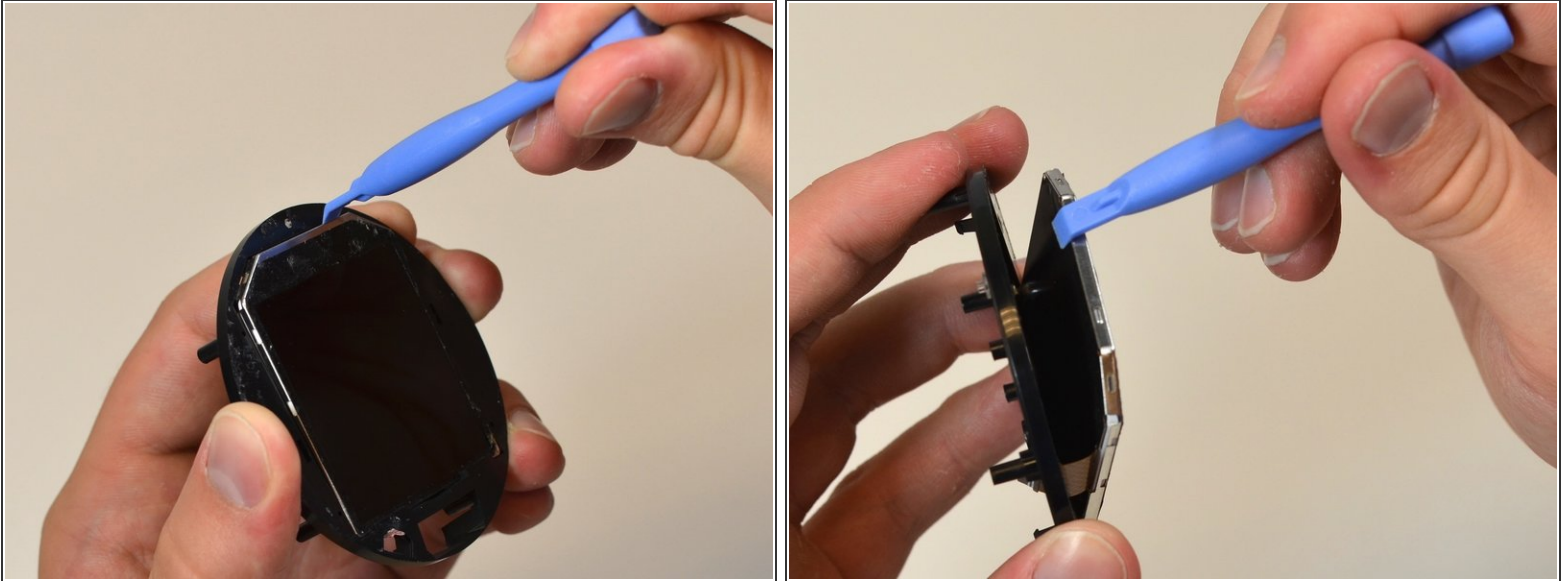
## Step 17



- Pry the front glass and plastic frame apart gently using the plastic opening tools.

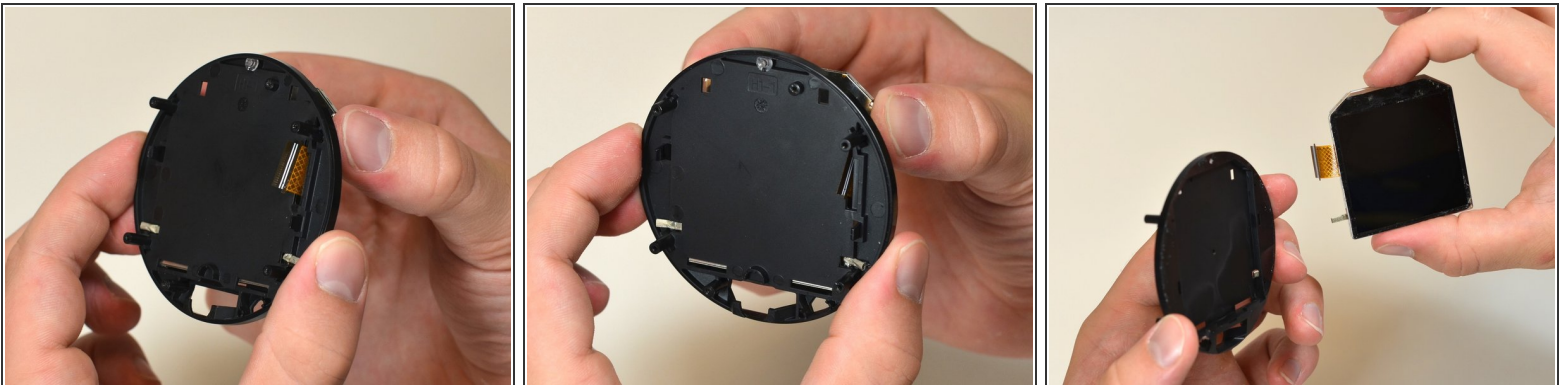


## Step 18 — Remove LCD screen from plastic frame



- Pry the LCD screen gently from the plastic frame using the plastic opening tools.

## Step 19 — Separate LCD from frame



- Pull the LCD screen away from the plastic frame gently using your fingers.

To reassemble your device, follow these instructions in reverse order.