



# Motorola SURFboard SB5101 Outer Cover Replacement

Use this guide in order to learn how to open the modem to remove inner components.

Written By: Bhavik Patel



---

## INTRODUCTION

This guide should be used to open the modem to access inner components for repair or replacement.

---



### TOOLS:

- [64 Bit Driver Kit](#) (1)
  - [Tweezers](#) (1)
-

## Step 1 — Removing the Screw on the Back of the Device



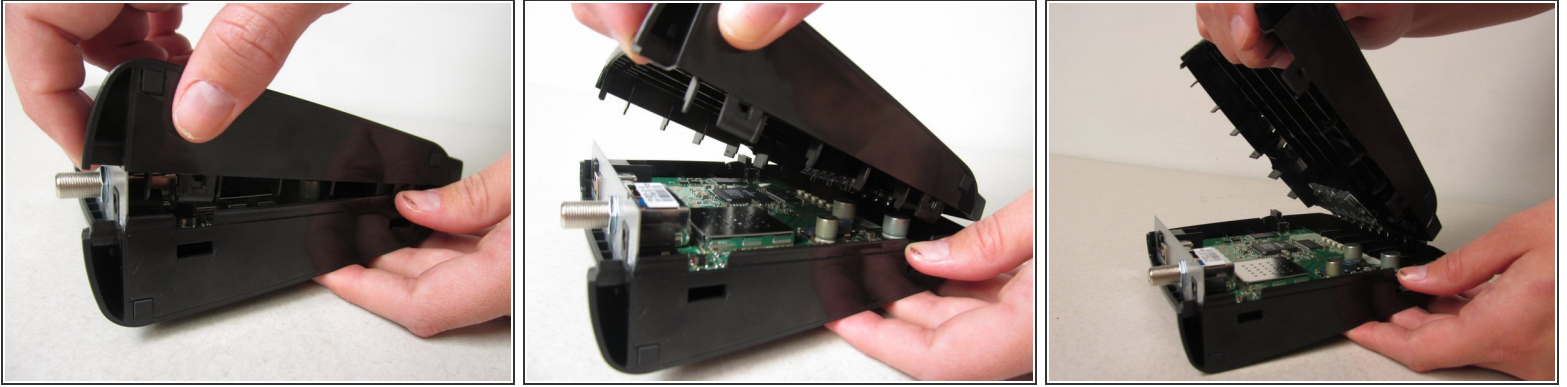
- Locate the single 1 cm screw on the back of the device (enclosed by a red circle in the image).
- Using a screwdriver with a Torx 10 hex screw, begin removing the 1cm screw by turning the screwdriver counterclockwise.
- Remove the screw and set aside.

## Step 2 — Unlocking Router



- ⓘ Rotate your device 90 degrees to the right so that the bottom of the device is facing you.
  - Locate the two horizontal slots on the bottom of the device.
- ⓘ You may need to remove the sticker on the bottom of the device to access these slots.
  - Insert the back end of the forceps into one of these slots. You may also use any other flat, narrow tool that fits into the slots.
  - Gently push the forceps into device. You should feel movement or hear a click, signifying this side of the device is unlocked.
  - Repeat with the other slot to completely unlock the device.

### Step 3 — Removing the Cover



- Grab the top and the bottom of the device and gently pull the device open.
- Continue pulling until you have completely removed the top cover of the device.
- ☑ When reassembling your device, make sure the standby key is properly in place. See the [Standby Key Guide](#) for more information.
- ☑ Also ensure that when you close the two sides of the cover the LED indicator lights are inside the information panel.

In order to learn how to re-assembly your device, visit the Reassembly Guide.