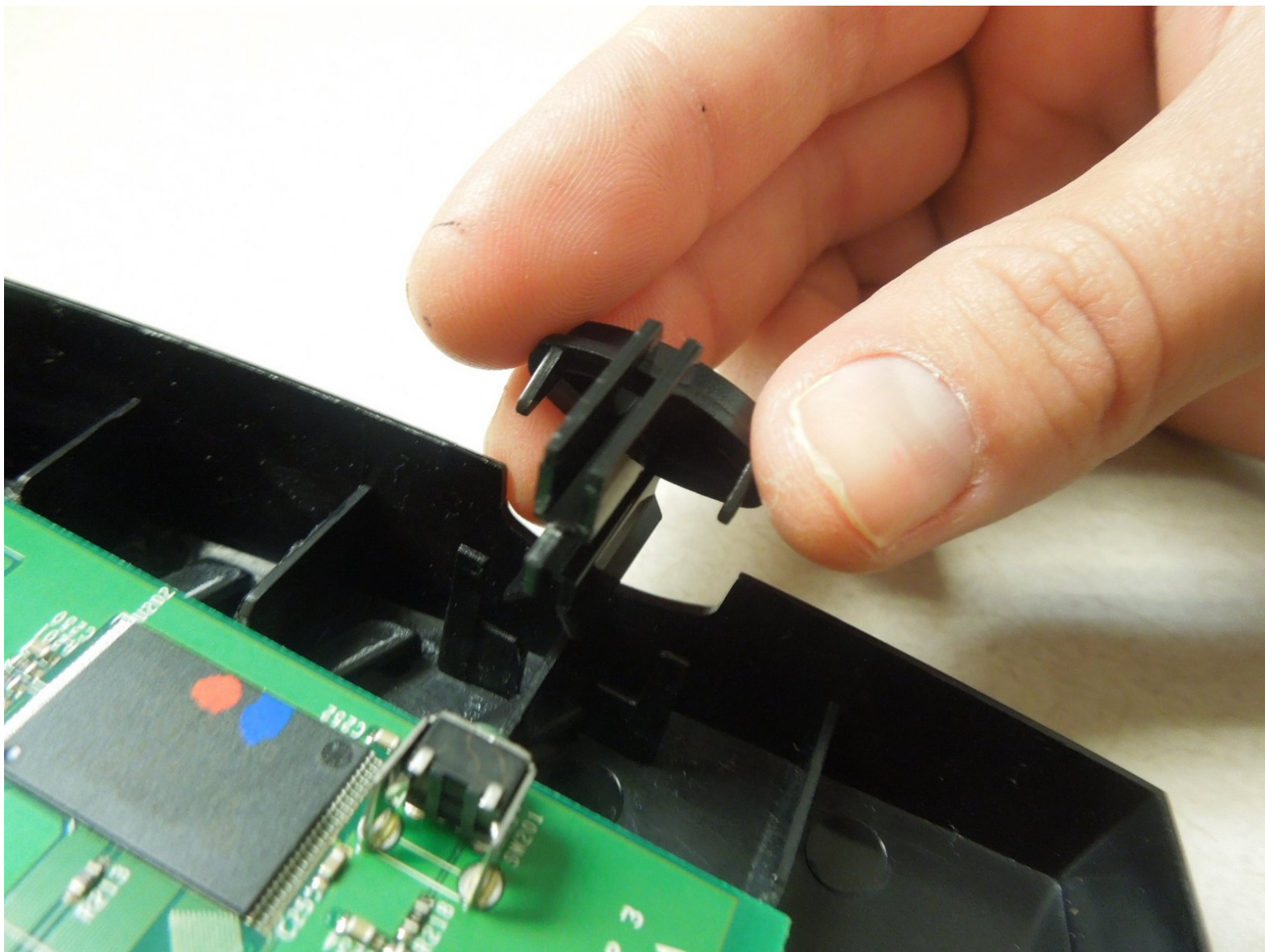




Motorola SURFboard SB5101 Standby Key Replacement

This guide is helpful for aligning the standby key if it is out of place.

Written By: Bhavik Patel



INTRODUCTION

The standby key is located at the top of the device and is used for resetting the device. It may fall out of place during disassembly of the device or through wear and tear. Use this guide to put the key back into place. Only realign the standby key once you are ready to reassemble and close the device. Otherwise it will fall back out of alignment.



TOOLS:

- [64 Bit Driver Kit](#) (1)
 - [Tweezers](#) (1)
-

Step 1 — Removing the Screw on the Back of the Device



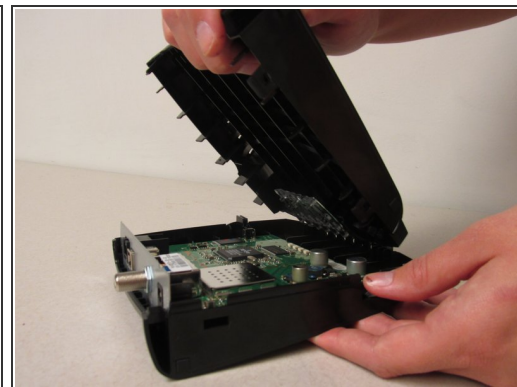
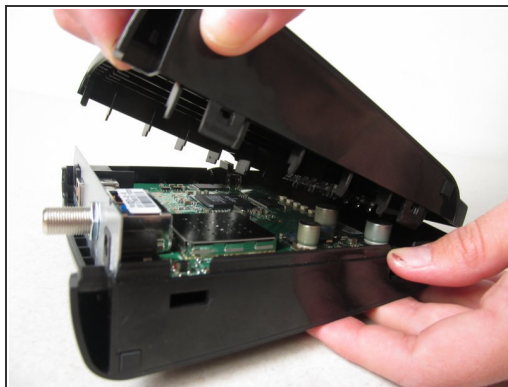
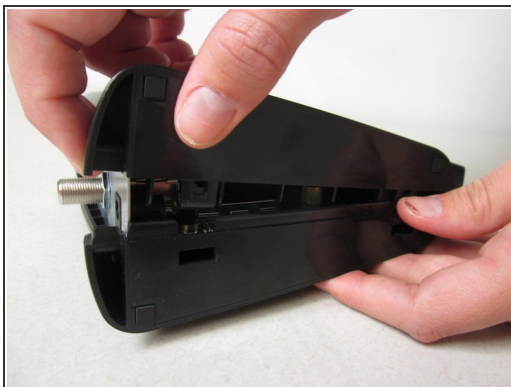
- Locate the single 1 cm screw on the back of the device (enclosed by a red circle in the image).
- Using a screwdriver with a Torx 10 hex screw, begin removing the 1cm screw by turning the screwdriver counterclockwise.
- Remove the screw and set aside.

Step 2 — Unlocking Router



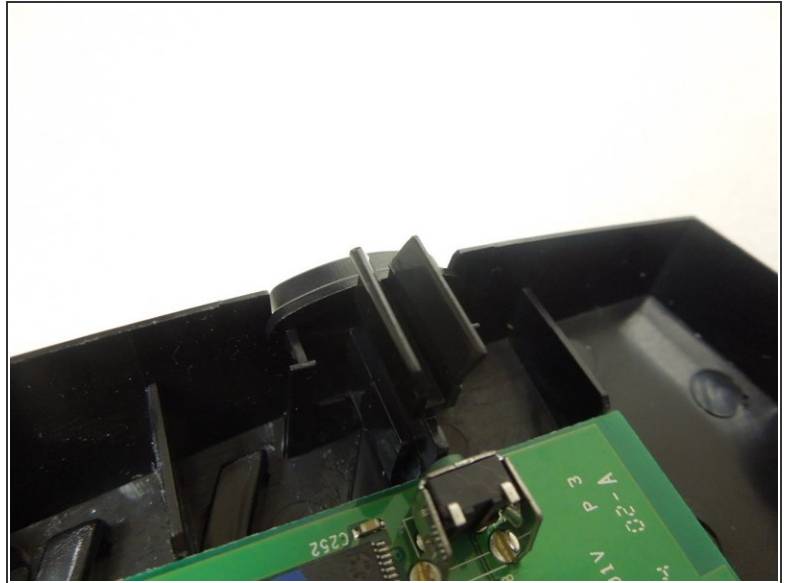
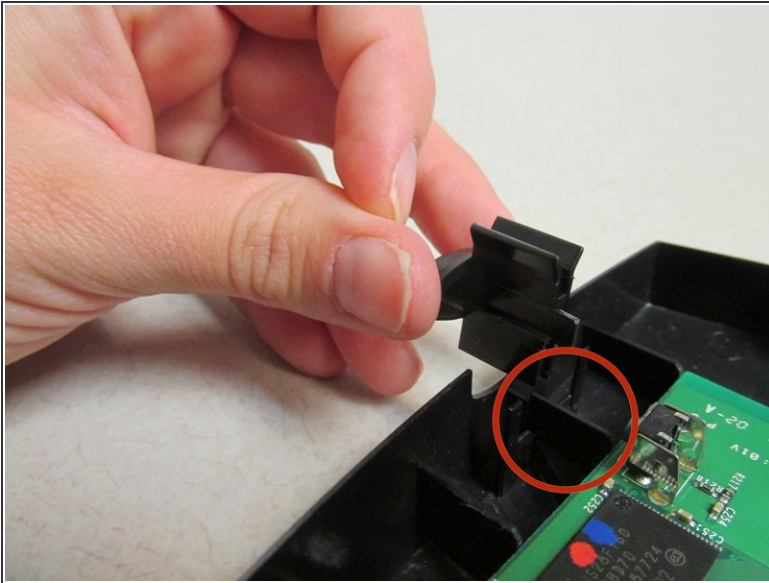
- ⓘ Rotate your device 90 degrees to the right so that the bottom of the device is facing you.
 - Locate the two horizontal slots on the bottom of the device.
- ⓘ You may need to remove the sticker on the bottom of the device to access these slots.
 - Insert the back end of the forceps into one of these slots. You may also use any other flat, narrow tool that fits into the slots.
 - Gently push the forceps into device. You should feel movement or hear a click, signifying this side of the device is unlocked.
 - Repeat with the other slot to completely unlock the device.

Step 3 — Removing the Cover



- Grab the top and the bottom of the device and gently pull the device open.
- Continue pulling until you have completely removed the top cover of the device.
- ☑ When reassembling your device, make sure the standby key is properly in place. See the [Standby Key Guide](#) for more information.
- ☑ Also ensure that when you close the two sides of the cover the LED indicator lights are inside the information panel.

Step 4 — Positioning the Standby Key



- Position the small black standby in the opening at the top of the case such that the wider teeth of the key is facing up.
 - Gently lower the key so the narrow teeth of the key are resting on the notch (circled in red) just below the opening at the top of the case.
- ☒ If you plan to continue working on the device, check that this key is in place before finally closing the device.

Your standby key has been successfully realigned.