



Canon PowerShot A630 Trigger Button Replacement

If your trigger button is damaged your camera may not be able to take a picture. This guide will show you how to replace the trigger button.

Written By: Kelly Duggan





TOOLS:

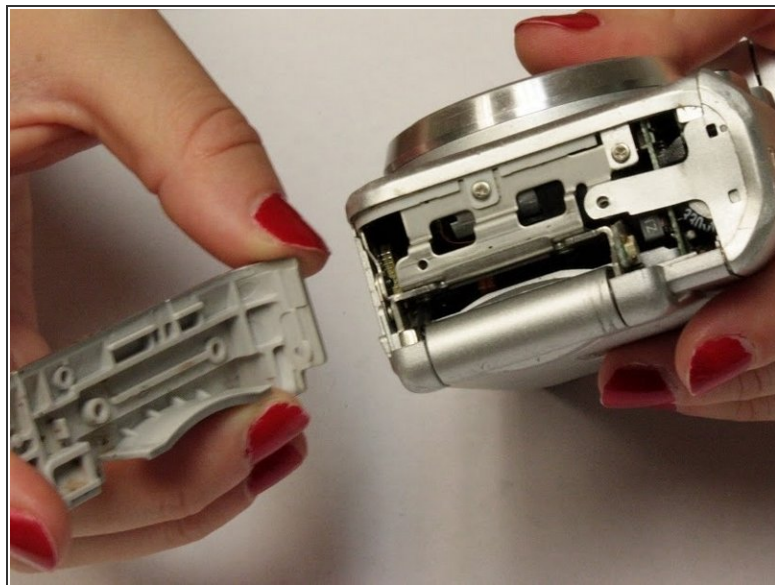
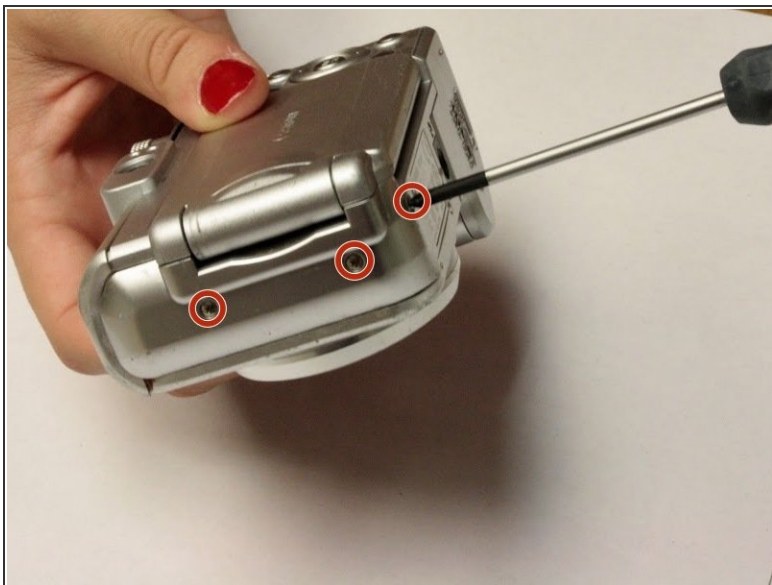
- [Phillips #00 Screwdriver](#) (1)
 - [Spudger](#) (1)
-

Step 1 — Front Panel



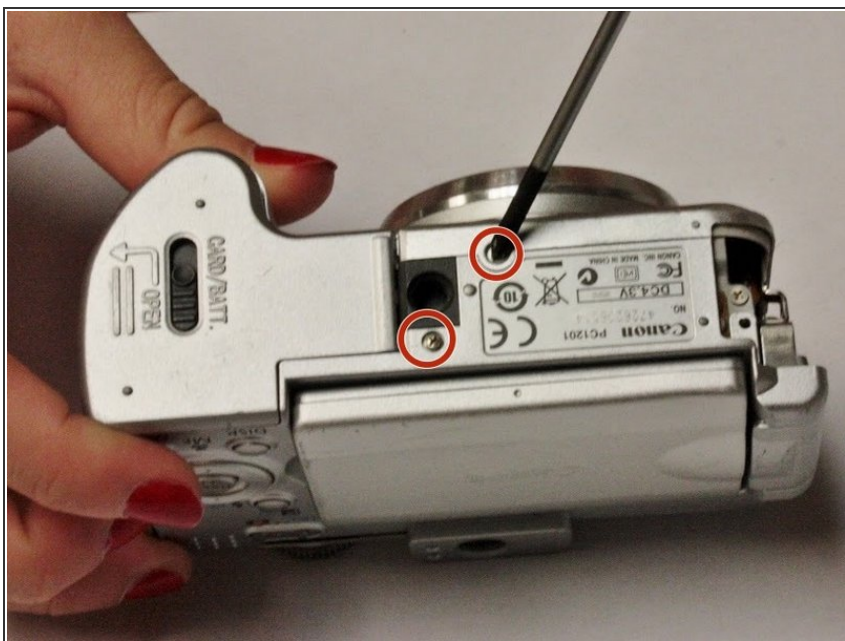
- Open the battery door by sliding the tab on the battery door while pushing the battery door away from the camera.
- Remove batteries.

Step 2



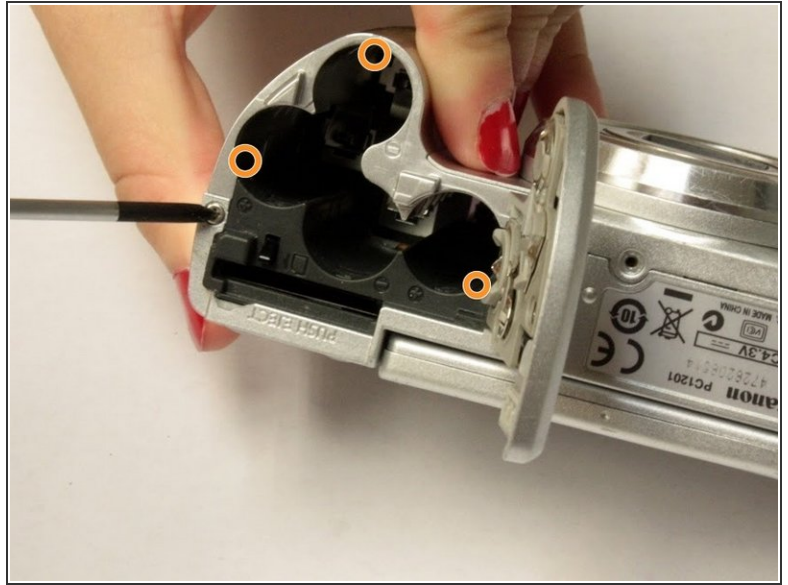
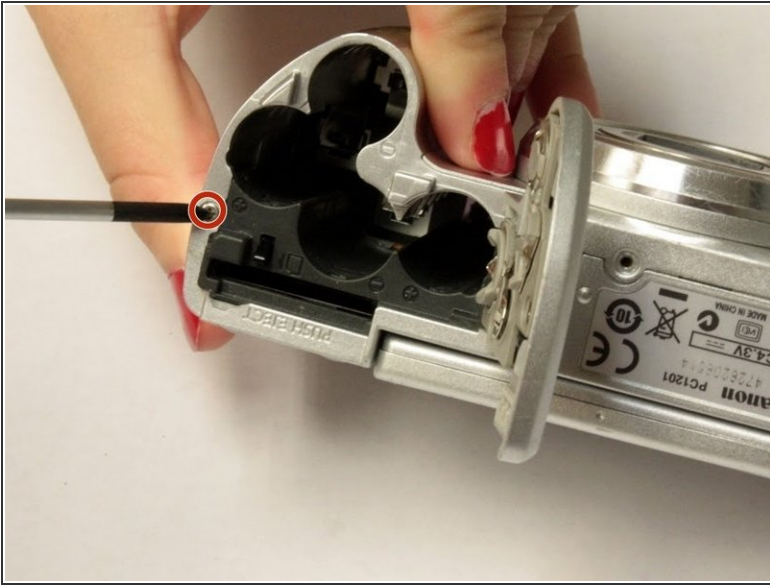
- Remove the three indicated .2mm screws using a Phillips #00 screwdriver.
- Gently pull off side-panel to remove it.

Step 3



- Remove the two indicated .2mm screws using a Phillips #00 screwdriver.

Step 4



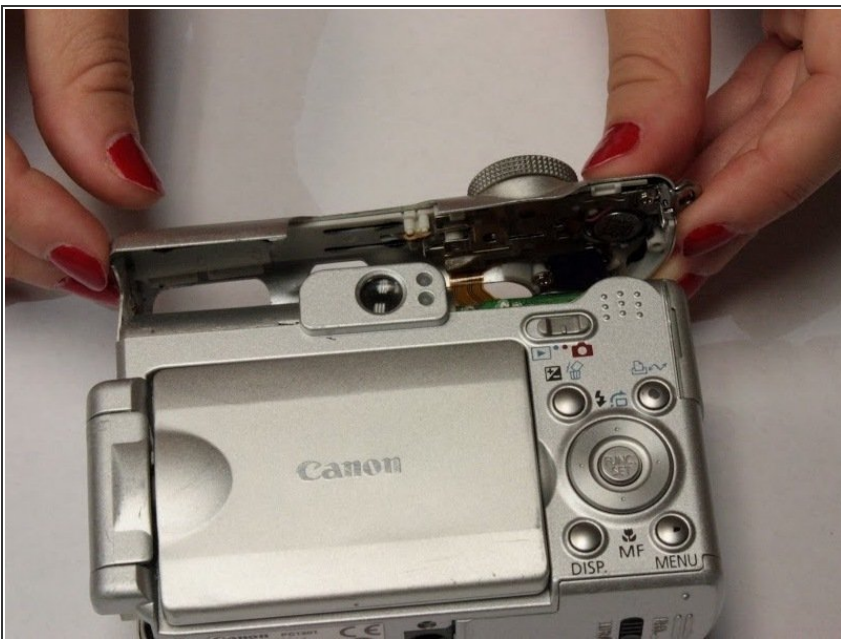
- Remove the indicated .2mm screw using a Phillips #00 screwdriver.
- Remove the three .2mm screws located on the internal side of the top panel within the battery chamber using a Phillips #00 screwdriver.

Step 5



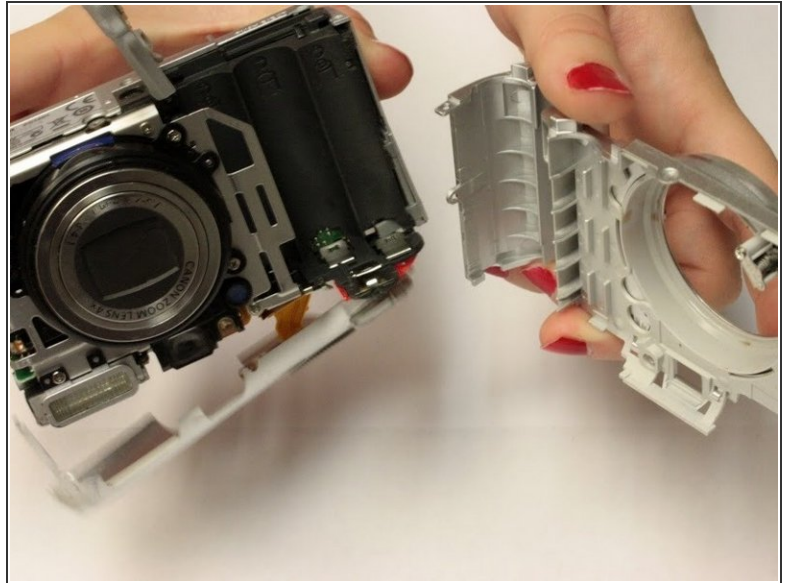
- Open 'DIGITAL A/V OUT' door on camera.
- Remove the two indicated .2mm screws using a Phillips #00 screwdriver.

Step 6



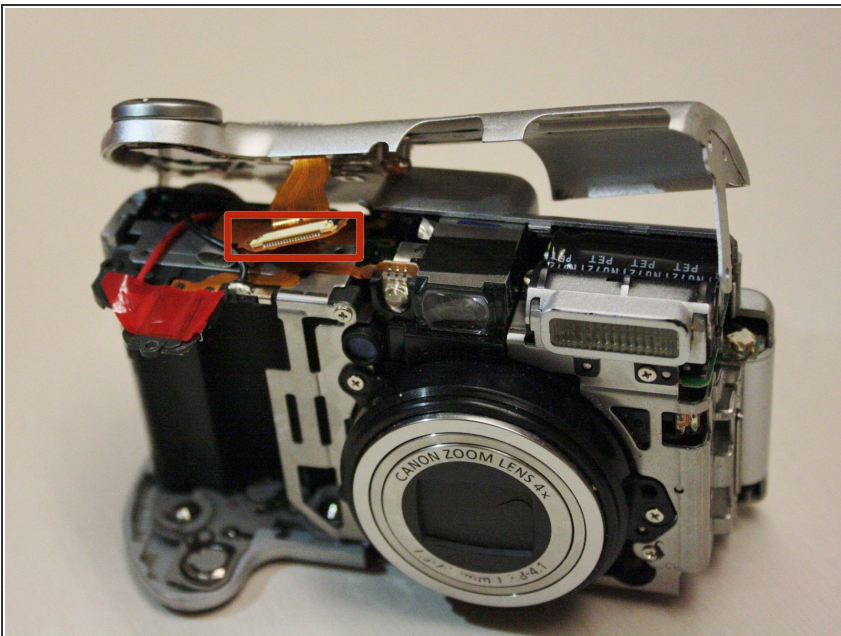
- Grip the sides of the top panel and gently pull to separate the top panel from the camera body.
- ⓘ The top panel will not completely detach.

Step 7



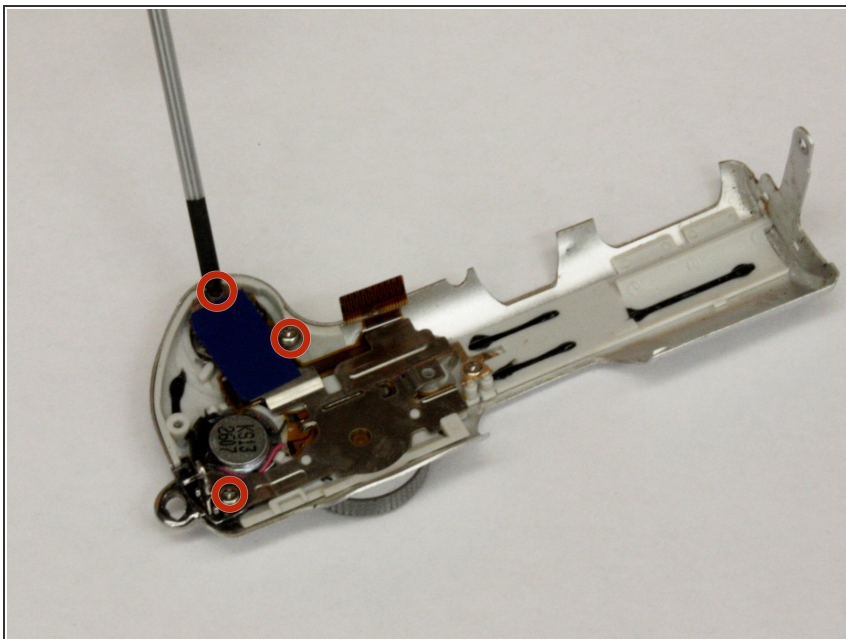
- Gently pull the front and back panels apart, and use a Phillips #00 screwdriver to remove the screw connecting the panels.
- Gripping the top and bottom, gently pull the front panel away from the camera body to remove it.

Step 8 — Trigger Button



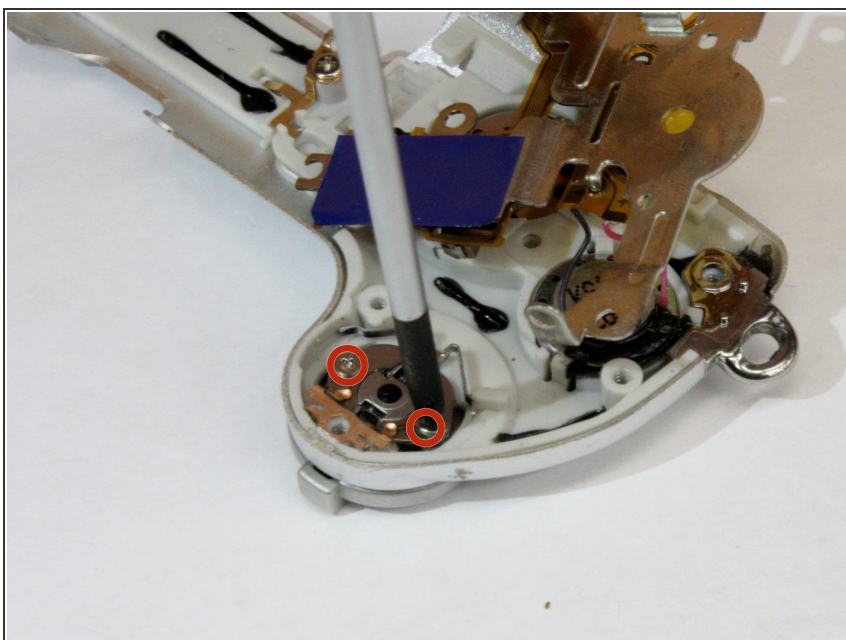
- Use the spudger to gently pull back the retaining clip and pull the ribbon out
- The top panel should now be completely detached from the camera
- ⚠ Applying too much force to the spudger may damage the retaining clip

Step 9



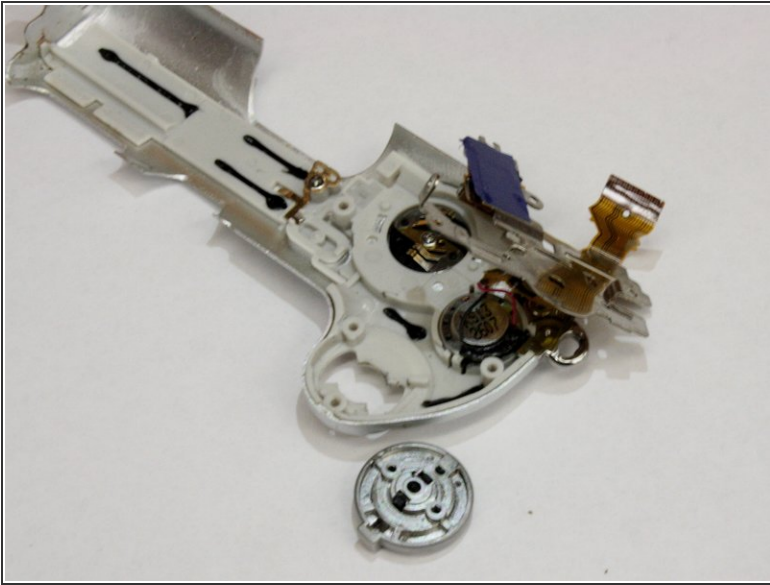
- Remove the two screws holding down the metal frame using the Phillips #00 screwdriver

Step 10



- Lift up the metal frame to expose the two screws located under the trigger button.
- Remove the two screws using Phillips #00 screwdriver

Step 11



- Trigger button should fall out

To reassemble your device, follow these instructions in reverse order.