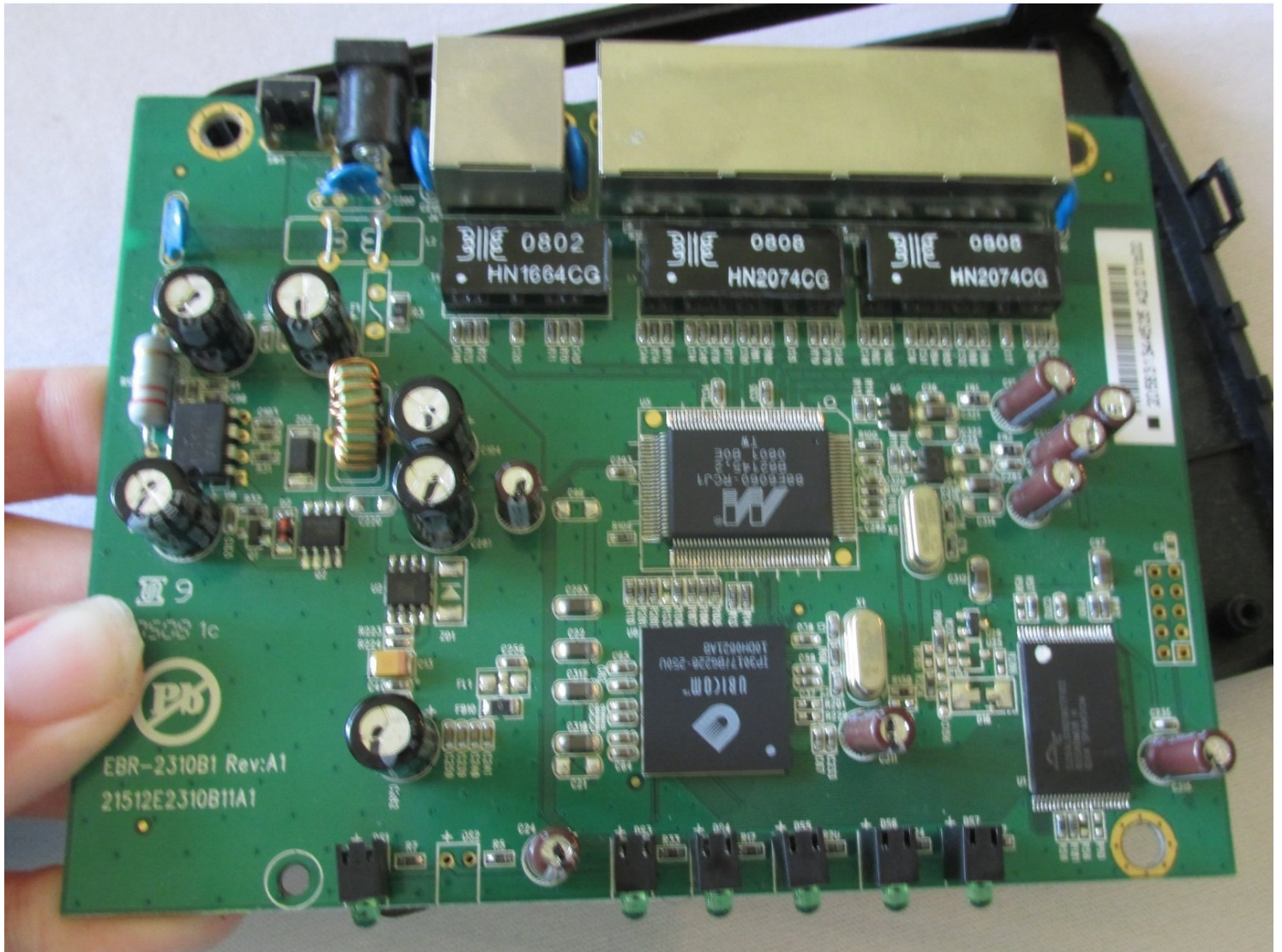




# D-Link EBR-2310 Motherboard Replacement

The motherboard is the internal component of...

Written By: Jessica



# INTRODUCTION

The motherboard is the internal component of your router that performs all basic functions. It is the most important part of your device. If your D-Link EBR-2310 router is non-operational, your motherboard most likely needs to be replaced. Follow this guide for instructions on how to do so.

## TOOLS:

[iFixit Opening Tool](#) (1)

[Phillips #2 Screwdriver](#) (1)

## Step 1 — Remove Plastic Screw Coverings



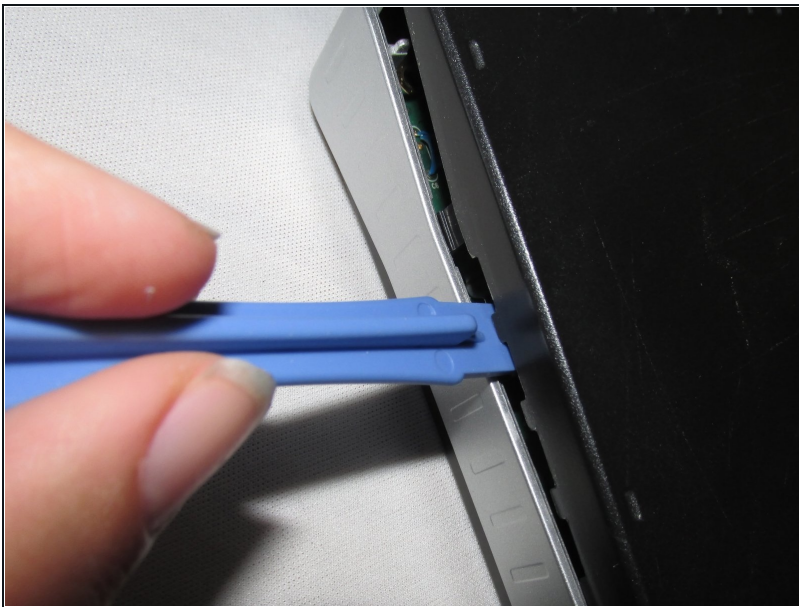
- Begin by placing the wired router face down.
- Locate the two black plastic screw coverings at the top of the device and remove them with your fingers.
- ① The two bottom plastic screw coverings do not need to be taken off.

## Step 2 — Remove Screws



- Using a Phillips #2 screwdriver, remove the two top screws.

## Step 3 — Pry Open The Router



- Use a plastic opening tool between the edges of the router and gently pry the device apart.
- Release the clips as you work your way around the device to avoid breaking them.
- Separate the front and back case of the router.

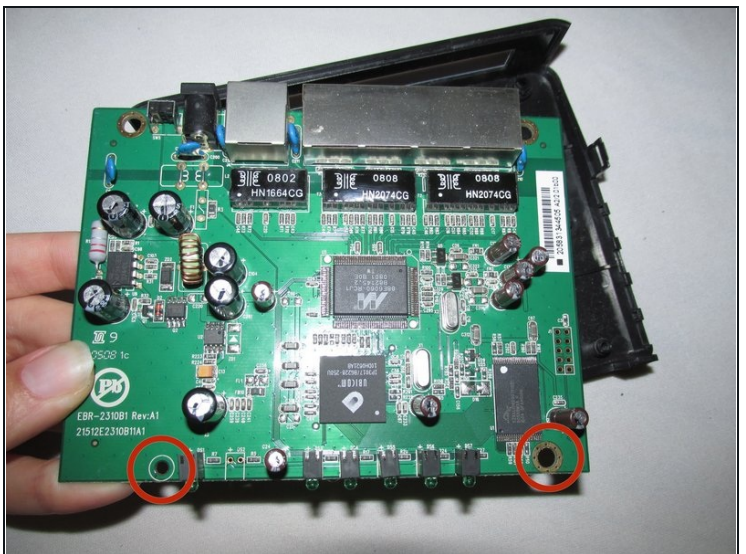
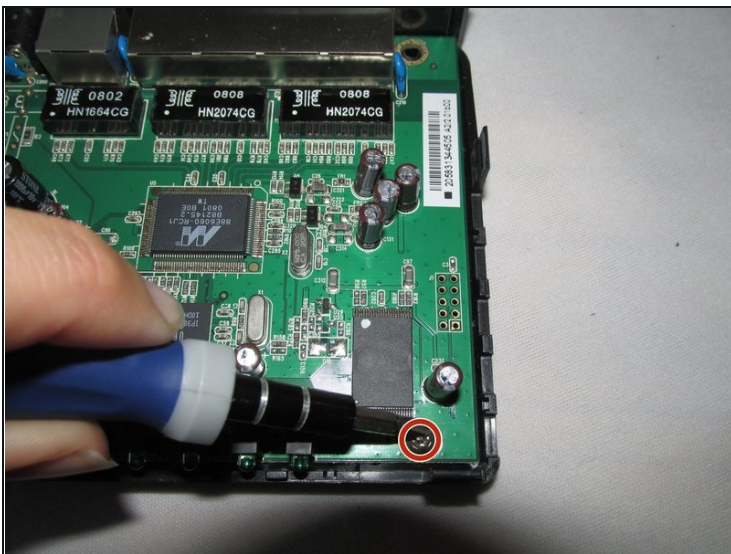


## Step 4 — Remove Silver Casing



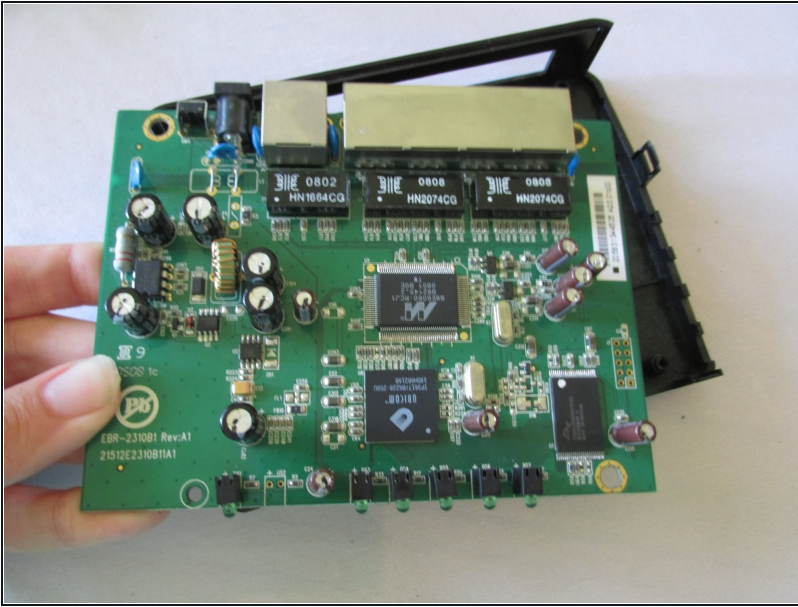
- Once you have removed the top black case of the router, remove the silver casing surrounding the logic board.
- ① It should easily snap out of place.

## Step 5 — Remove Inner Bottom Screws



- Use a Phillips #2 screwdriver to remove the two screws at the bottom of the motherboard.

## Step 6 — Remove Bottom Case



- Now that you have removed all screws and the surrounding silver casing, pop the logic board out from the bottom component of the router.
- You have now removed the logic board from your device.

---

To reassemble your device, follow these instructions in reverse order.