



# Kid Galaxy Morphibians Explorer Outer Cover Replacement

Removal of the outer cover of the Kids Galaxy Explorer will give you access to the internal components.

Written By: Eric Studstrup



---

## INTRODUCTION

There are a few layers that you have to work through to get to the inside of the Kid Galaxy Explorer. There are screws on the top and bottom holding the Kid Galaxy Explorer together so if it is not coming apart do not pry it open; check for more screws.

---

### TOOLS:

- [Phillips #2 Screwdriver](#) (1)
-

## Step 1 — Remove the Top Cover



- First, completely loosen the 9.6 mm Phillips #2 screw on top. There is a plastic washer that holds the screw to the top cover, so it will not need to be taken out.

## Step 2



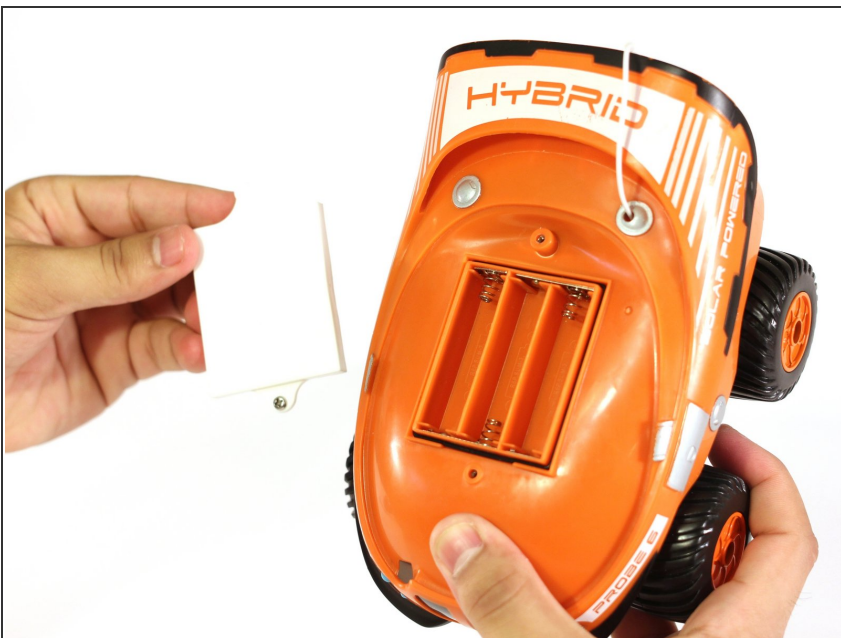
- After the screw has been loosened, lift the cover off.

### Step 3



- Completely loosen the 9.6 mm Phillips #2 screw from the battery cover. Once again, there is a plastic washer to hold the screw to the cover.

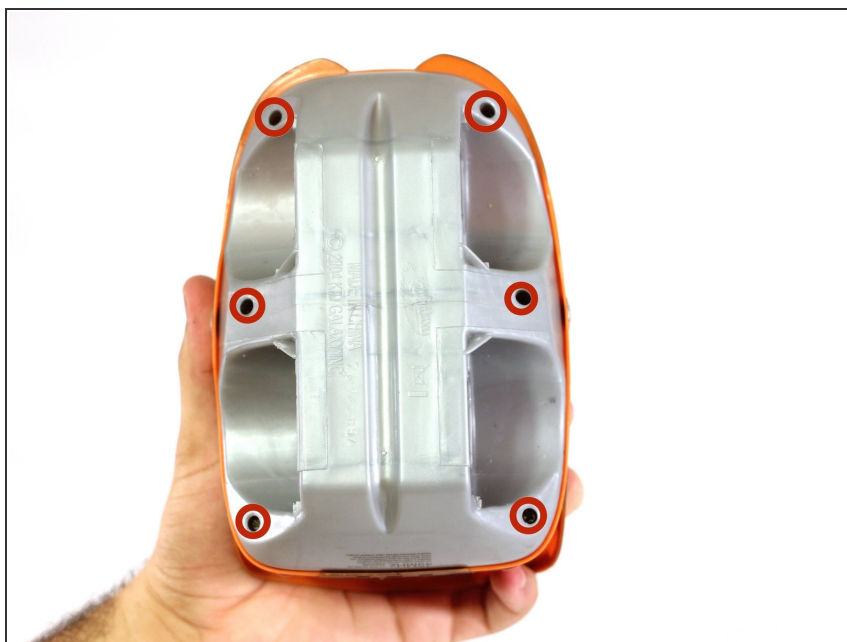
### Step 4



- After the screw is loosened, lift the battery cover off the top cover to gain access to the batteries.
- Turn the RC car over to reach the six screws on the bottom.

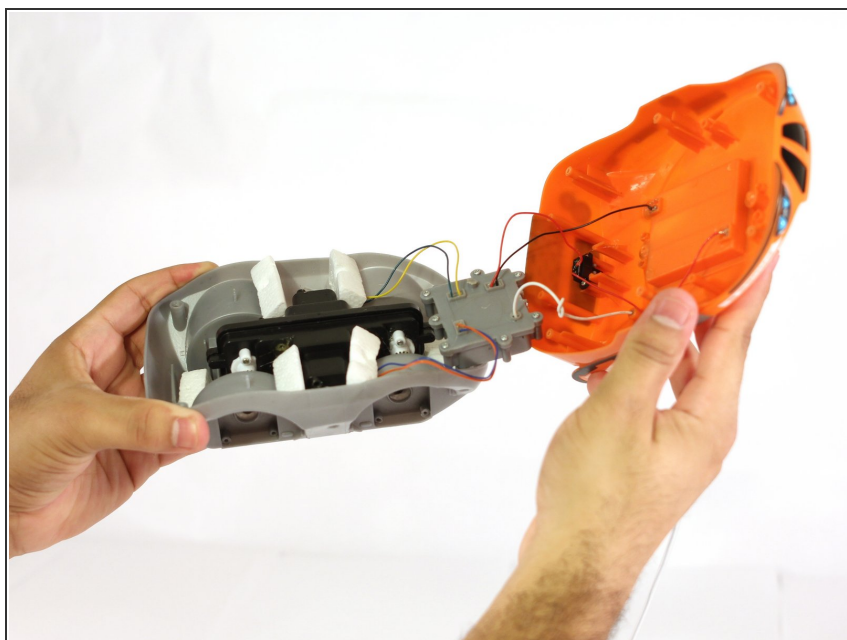


## Step 5



- Remove the six 11.6 mm Phillips #2 screws on the bottom cover.
- (Wheels are removed in this picture to clearly show screw location. They do not need to be removed for this step)

## Step 6



- Lift the top Cover off the car.

To reassemble your device, follow these instructions in reverse order.