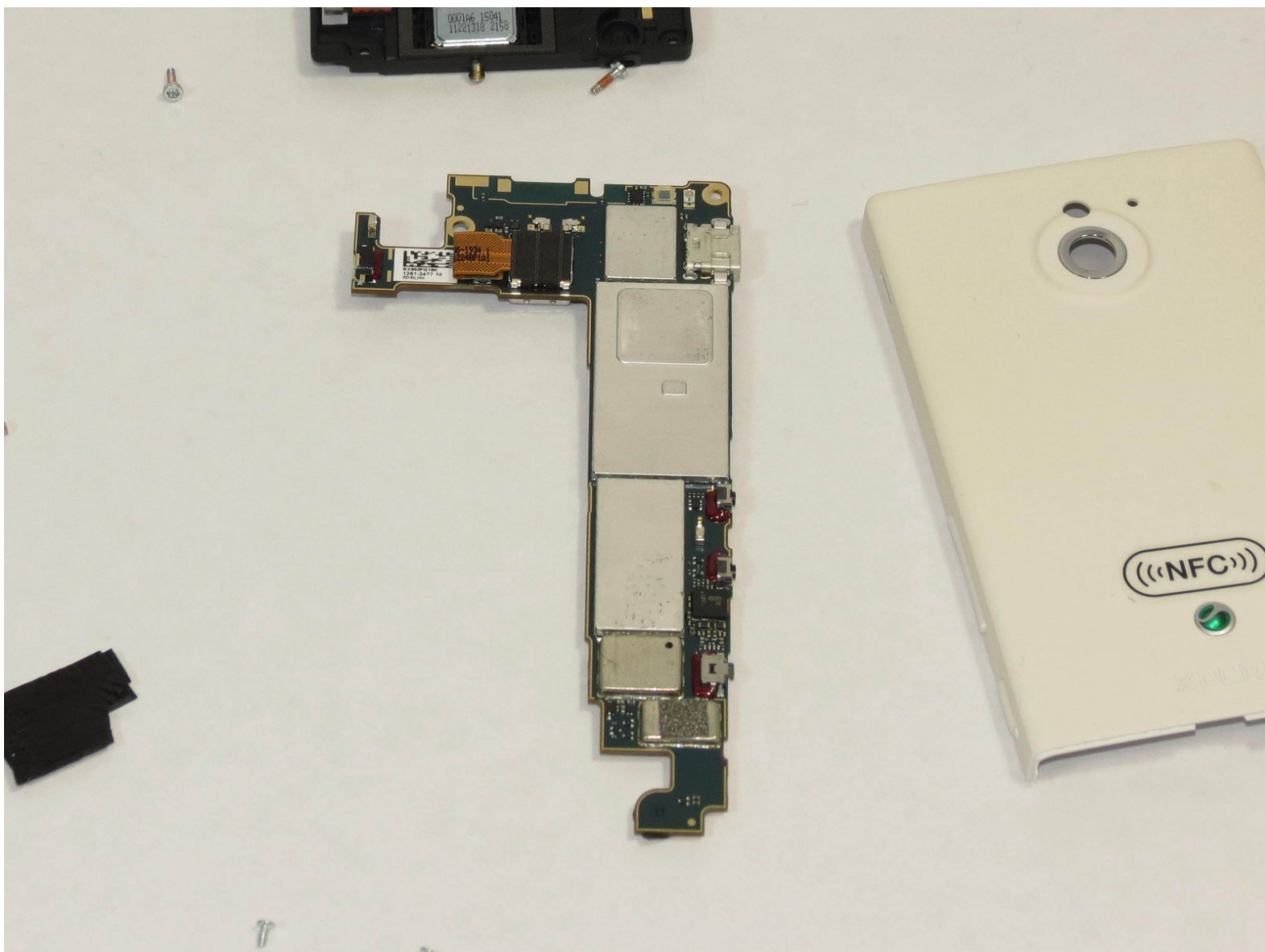




Sony Xperia Sola Camera Module Replacement

This guide will assist you in how to replace a camera module.

Written By: Cary Drew



INTRODUCTION

If your camera broke or doesn't work you may need to replace it from the board. This will show you how to do it.



TOOLS:

- [64 Bit Driver Kit](#) (1)
- [Metal Spudger](#) (1)
- [Spudger](#) (1)
- [Magnetic Project Mat](#) (1)
- [iFixit Opening Tools](#) (1)
- [Tweezers](#) (1)



PARTS:

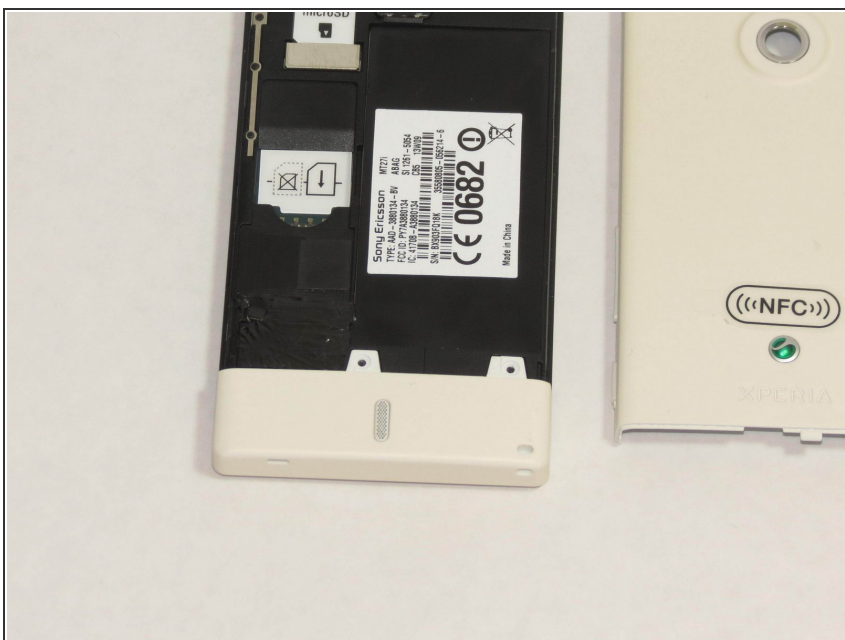
- [Sony Xperia Sola camera module](#) (1)

Step 1 — Lay the phone as shown.



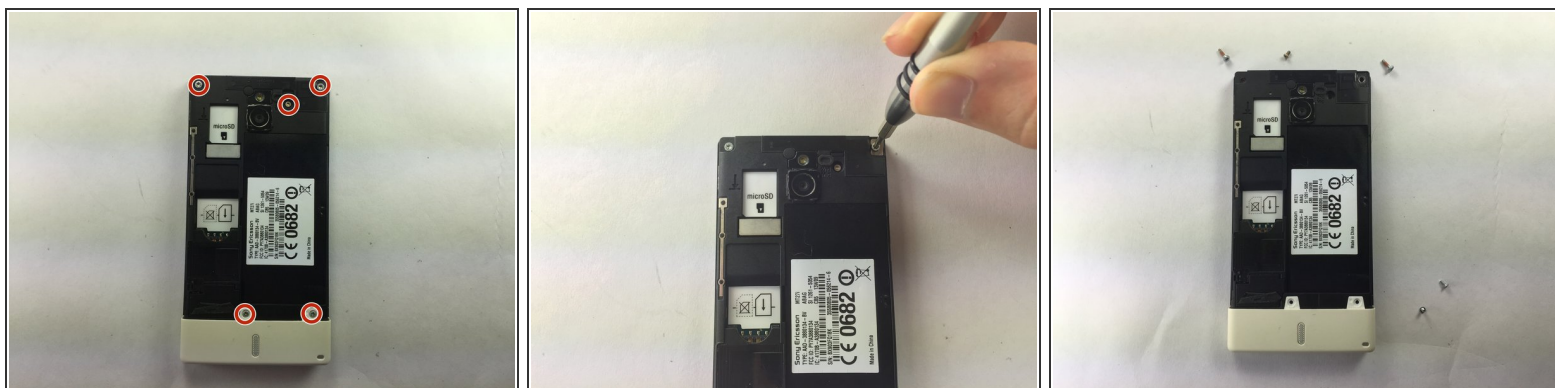
- Place phone down with screen side down and camera side facing up as shown.

Step 2 — Remove the back cover.



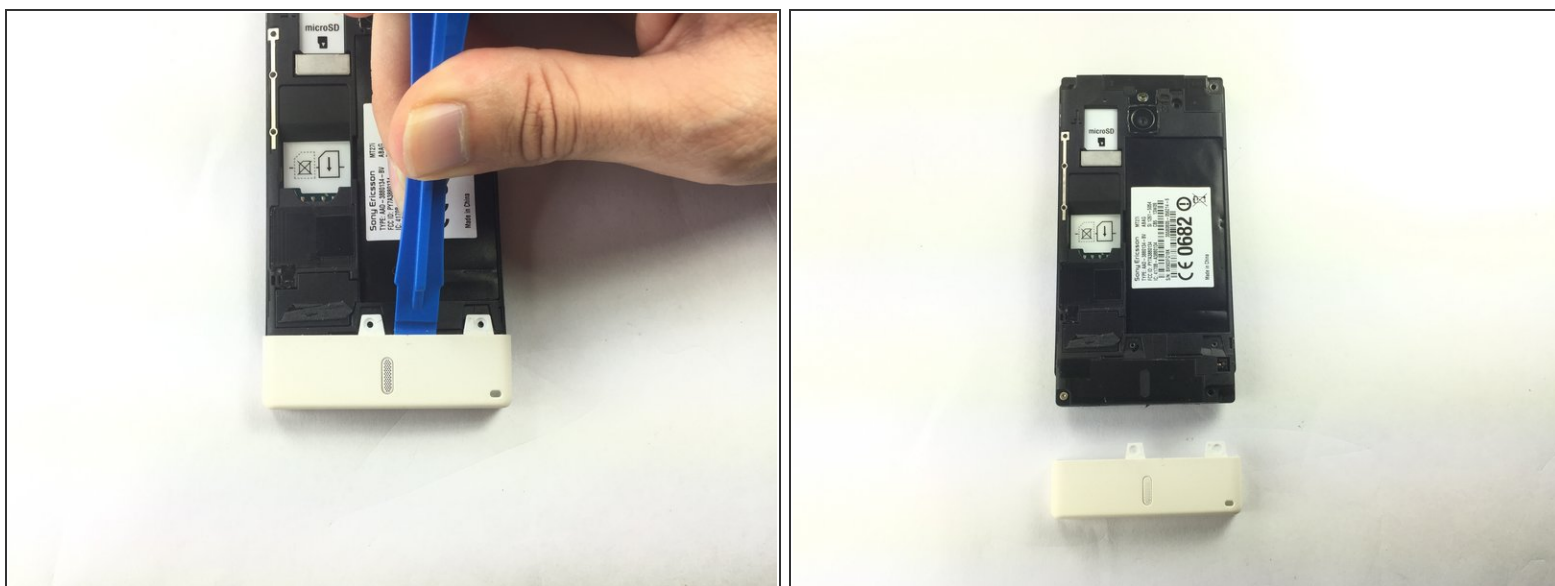
- Push on cover away from you. You should hear a snap or pop. This will let you view the battery and sim/sd card slots. Then lift the cover off.

Step 3 — Remove the screws.



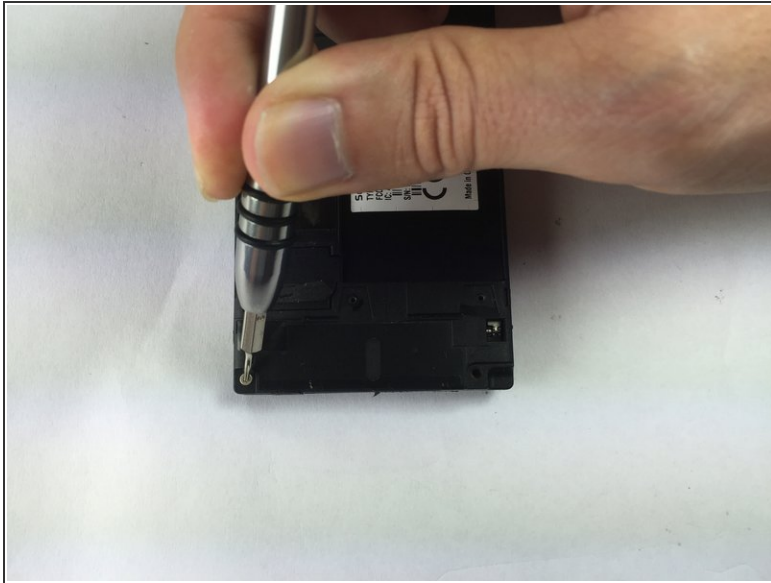
- Locate and remove the five (5) screws on the phone, using the 26 Bit Kit. The screws are at the top and the bottom of the phone as shown.

Step 4 — Remove bottom white cover.



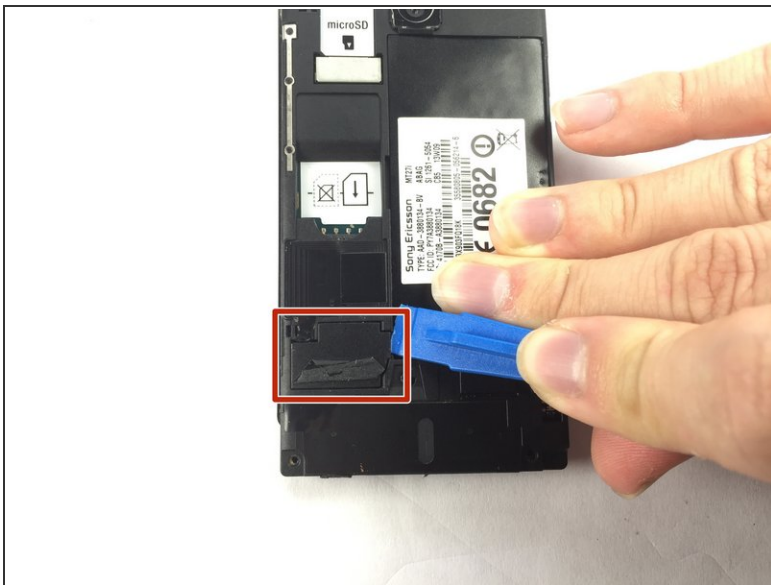
- Pry off the bottom white cover by using the opening tool as a lever.

Step 5 — Remove more screws.



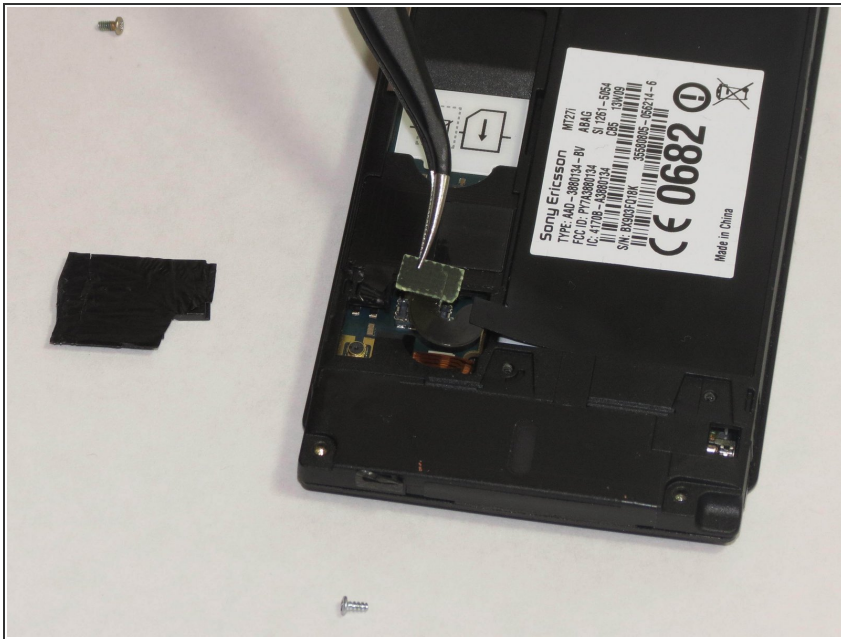
- Locate and remove the 2 additional screws, using the 26 Bit Kit, that are revealed. These are marked as shown.

Step 6 — Remove black cover.



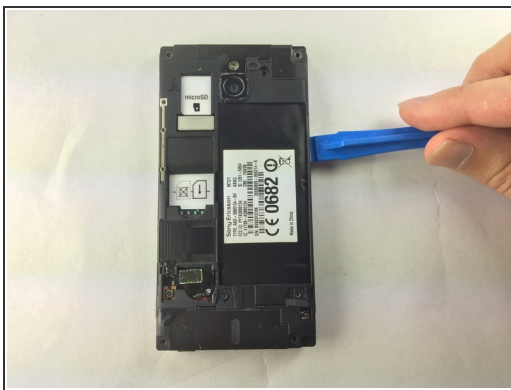
- Locate the black cover on the bottom left of phone. Use an opening tool to pry up and remove the black cover.

Step 7 — Disconnect the battery's circuit.



- Disconnect the circuit by lifting the connector straight up as shown using the tweezers.

Step 8 — Remove the phone's inner back cover.



- Turn the phone onto its side, insert plastic opening tool into seam, and gently remove cover. You can also slide the spudger in from the top.
- Once the cover is loose, lift it off the phone. The side buttons may feel a bit sticky, but this is normal.

Step 9 — Remove the additional power circuit.



- Locate the additional circuit at the bottom left. Using the tweezers, remove it gently by pulling up.

Step 10 — Repeat for the circuit on the top end of the battery.



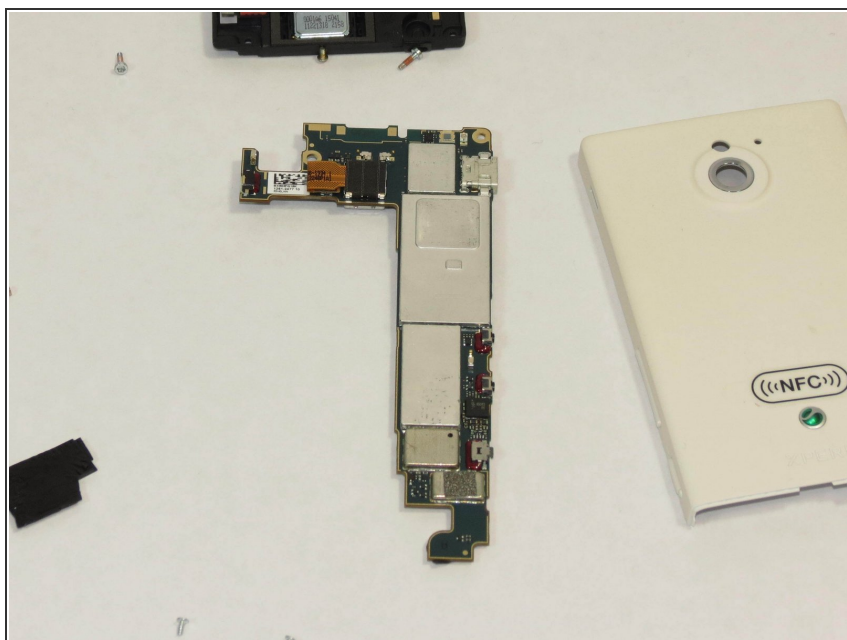
- Use the tweezers to lift up on the circuit located at the top left.

Step 11 — Remove the motherboard.



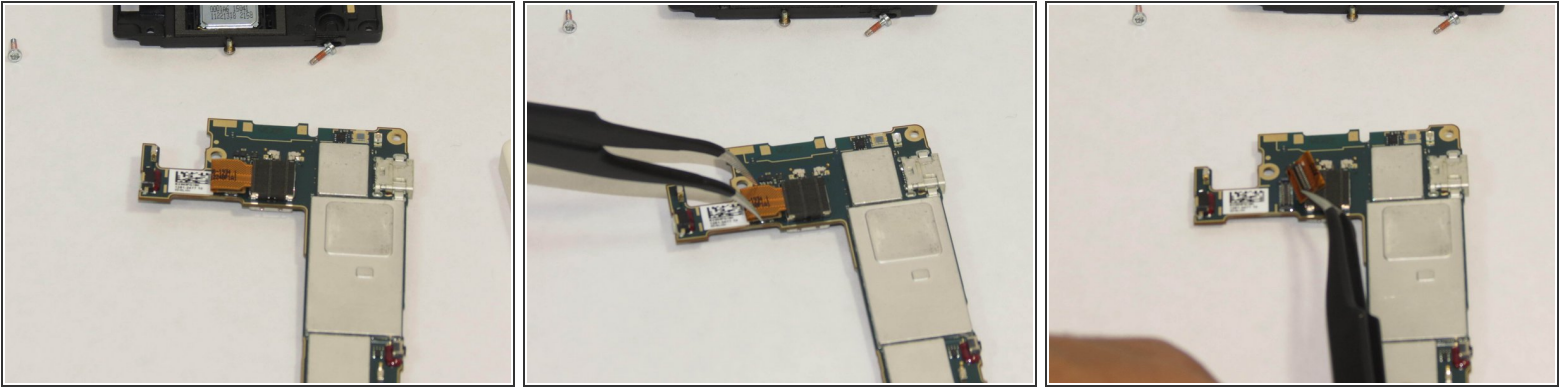
- Use the spudger and slide it under the top left of the board then lift the board straight up. The board should come up very easily.

Step 12 — Place the board as shown.



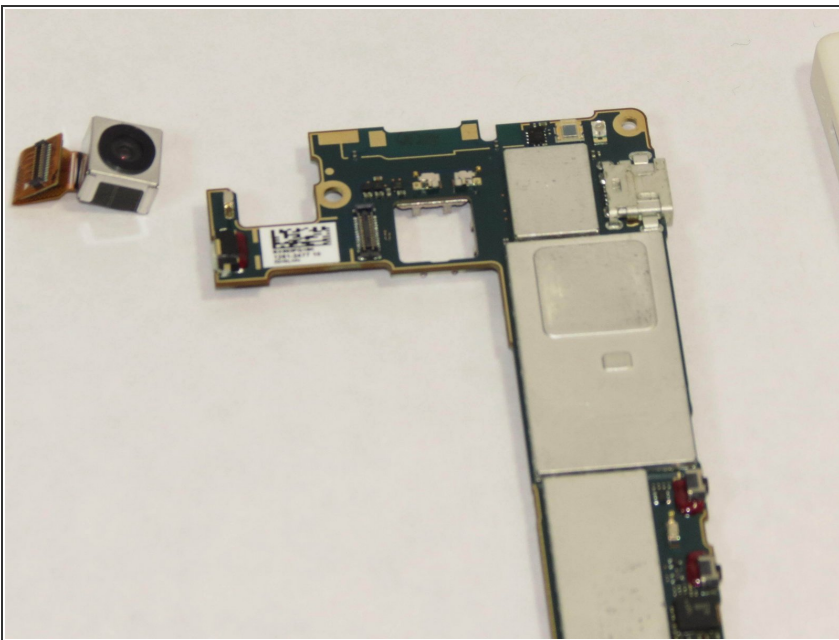
- This will ensure easy removal of the camera module.

Step 13 — Remove the camera's power.



- Using the tweezers remove the camera from the power source.

Step 14 — Remove the camera module.



- Pick up board and remove camera module. The module should seem to just pop out.

To reassemble your device, follow these instructions in reverse order.