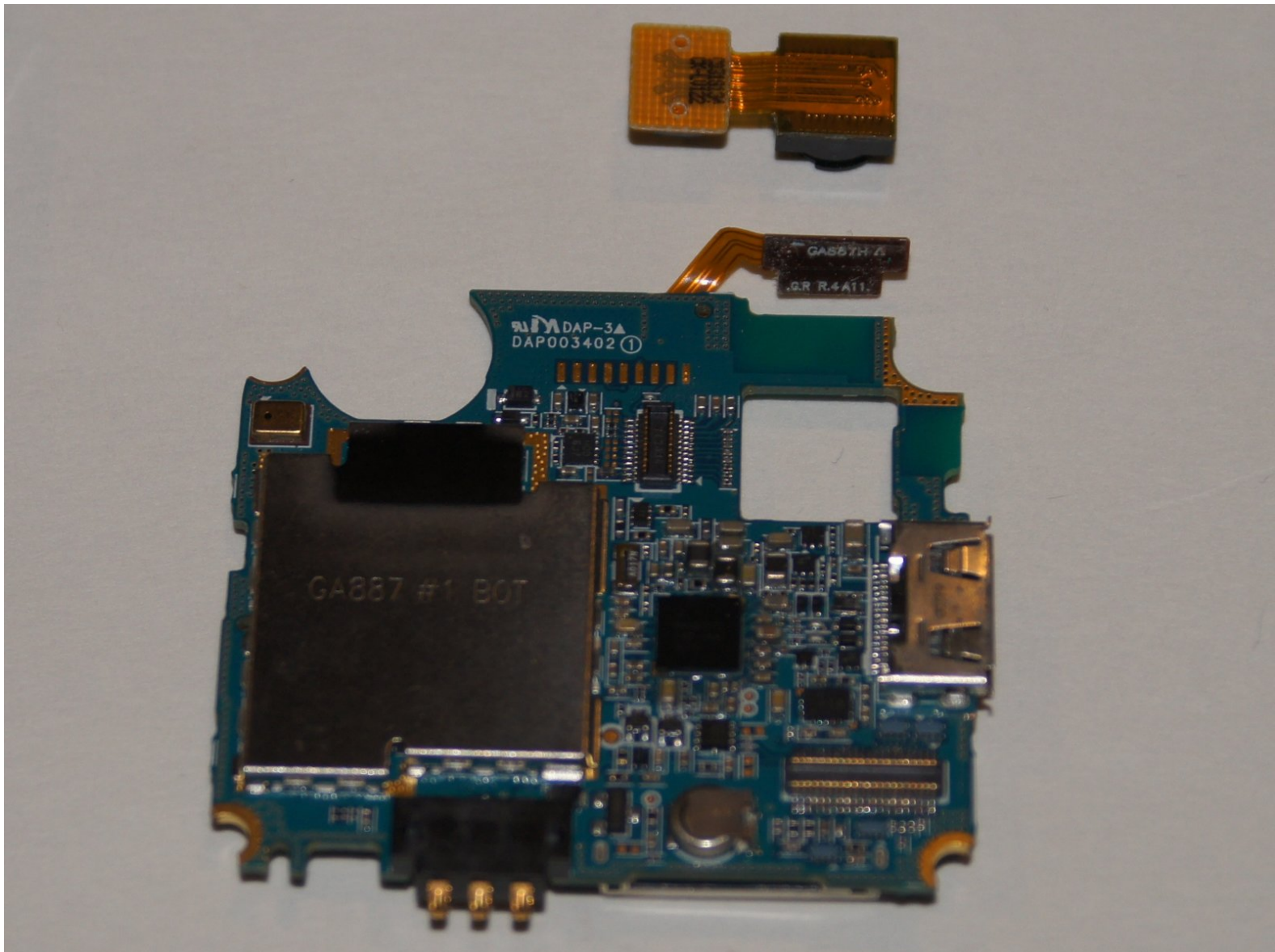




# Samsung Solstice Rear Facing Camera Replacement

Replace the camera in your Samsung Solstice.

Written By: Colton Glyder



## INTRODUCTION

Replacing the camera in your Samsung Solstice is a quick and easy project, provided you know what you are doing and have the right tools to remove it.



### TOOLS:

- [iFixit Opening Tools](#) (1)
- [Phillips #000 Screwdriver](#) (1)



### PARTS:

- [Samsung Solstice Replacement Camera](#) (1)

## Step 1 — Removing the back cover



- Gently slide the cover off of the phone by pushing it upwards, in the direction of the small arrow on the back cover.
- Set the cover off to the side once you have removed it.

## Step 2 — Removing the battery



- ☒ This step can be accomplished without the need of a plastic opening tool. Just use your finger if you want to.
- Wedge a plastic opening tool in between the rear end of the battery and the plastic frame.
  - Pry the battery up out of its recess and away from the phone.



### Step 3 — Remove the back cover



- Remove the back cover by sliding the cover off of the phone by pushing it upwards, in the direction of the small arrow on the back cover.
- Set the cover off to the side once you have removed it.

### Step 4 — Removing existing SIM Card



- Locate the SIM Card slot directly above the battery and below the phone camera
- Place your thumb on the SIM Card in the slot, press down gently and slide the card away from the slot, until it comes out of the slot entirely

## Step 5 — Set SIM Card aside



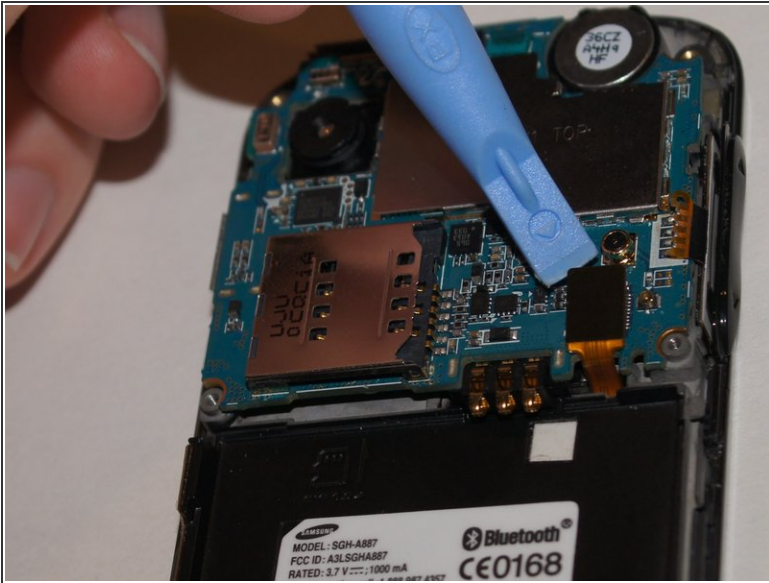
- Once you have removed the SIM card, set it aside from the phone.

## Step 6 — Removing the plastic mid-frame



- Remove the six 0.4mm Phillips screws securing the midframe to the front panel assembly.
- Grasp the the plastic midframe with your thumb and forefinger and lift it away from the phone.

## Step 7 — Motherboard Assembly

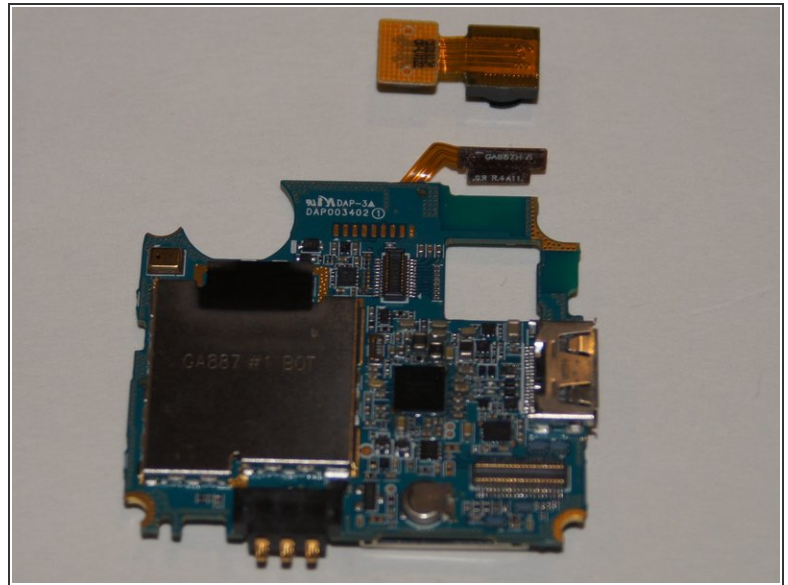
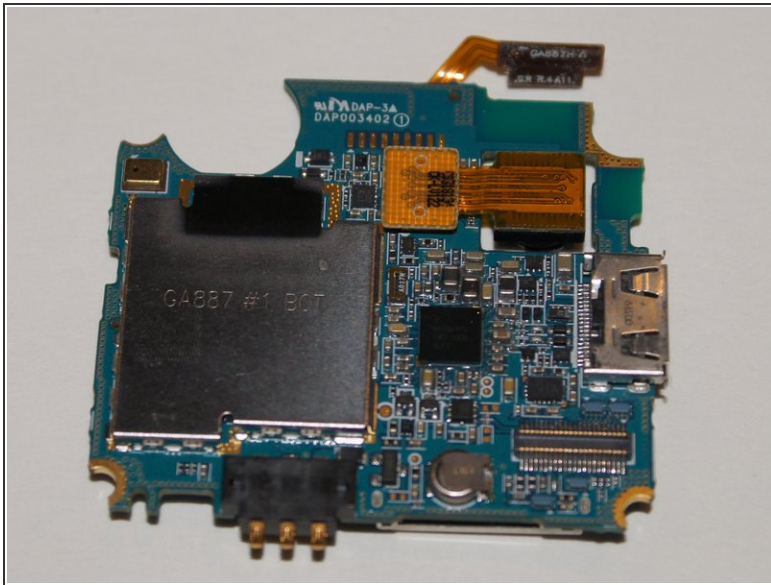



☞ This step can be accomplished without the need of a plastic opening tool. Just use your finger if you want to.

- Use a plastic opening tool to pry the connectors from their sockets on the motherboard.
- Gently remove the motherboard from the phone
- Set the motherboard aside once it is free and separated from the phone



## Step 8



-  This step can be accomplished without the need of a plastic opening tool. Just use your finger if you want to.
- Use a plastic opening tool to carefully pry the camera connector from its socket on the motherboard.

To reassemble your device, follow these instructions in reverse order.