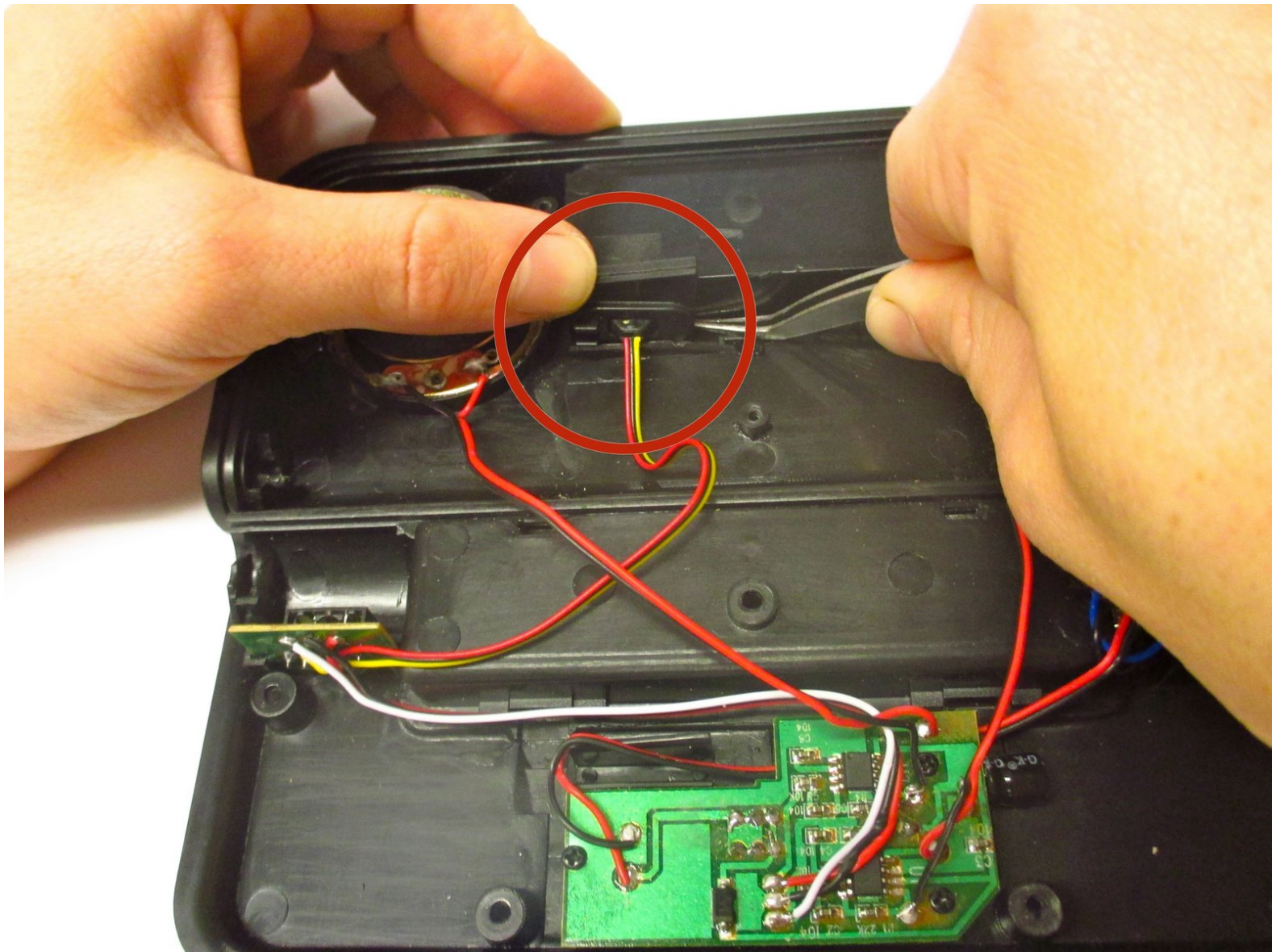




# iHip Fold-up Portable Speaker iPod/iPhone Input Replacement

If the iPod/iPhone input malfunctions, use this guide to remove the back cover and replace the input.

Written By: Jonathon Josephson



# INTRODUCTION

This guide will describe how to replace the speaker system's iPod/iPhone input.



## TOOLS:

- [Phillips #0 Screwdriver](#) (1)



## PARTS:

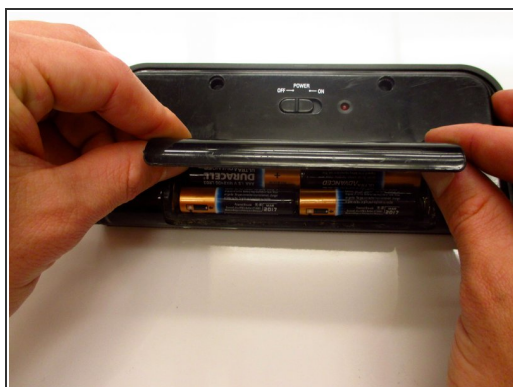
- [Tweezers](#) (1)
- [Soldering Iron](#) (1)

## Step 1 — Removing the battery case cover



- Use your fingers to slide the battery case cover off in the direction of the arrows.

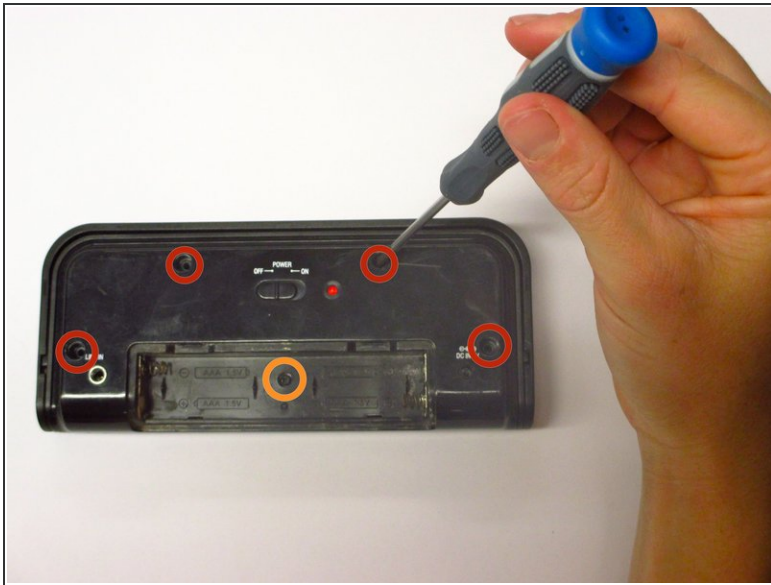
## Step 2 — Cleaning the battery case



- Remove the four AAA batteries. Be sure to check your nearest battery recycling point!
- ⓘ Use the detailing brush and a paper towel to remove any corrosion left by previous batteries.

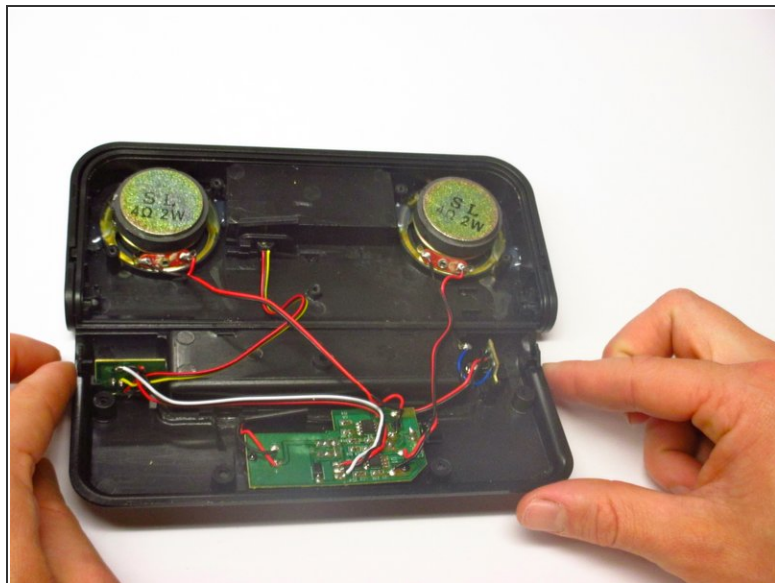
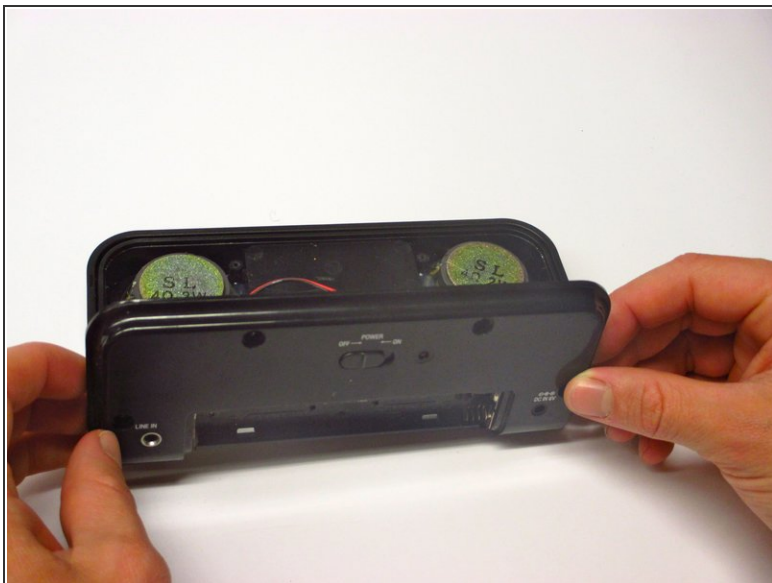


### Step 3 — Removing the screws



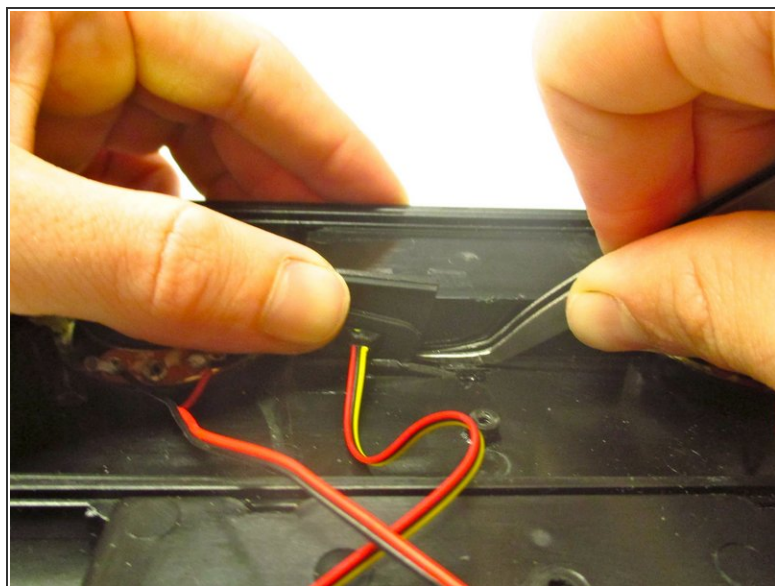
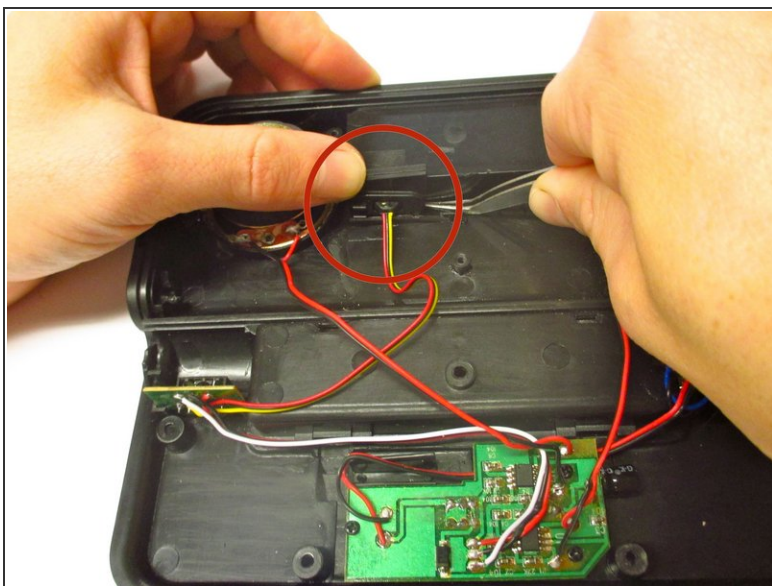
- Unscrew the four outer 1.0 mm screws with a Phillips-Head screwdriver.
  - ⓘ Screws will be magnetized in position and will require the use of tweezers to be removed.
- Push down gently on the battery case cover and slide it in the direction the arrows indicate. Remove the batteries.
- Unscrew the 0.6 mm screw located in the center of the battery case.
- Keep the 1.0 mm and 0.6 mm screws separate from each other for reassembly.

## Step 4 — Removing the back cover



- Remove the back cover carefully; there are many wires that connect it to the device.

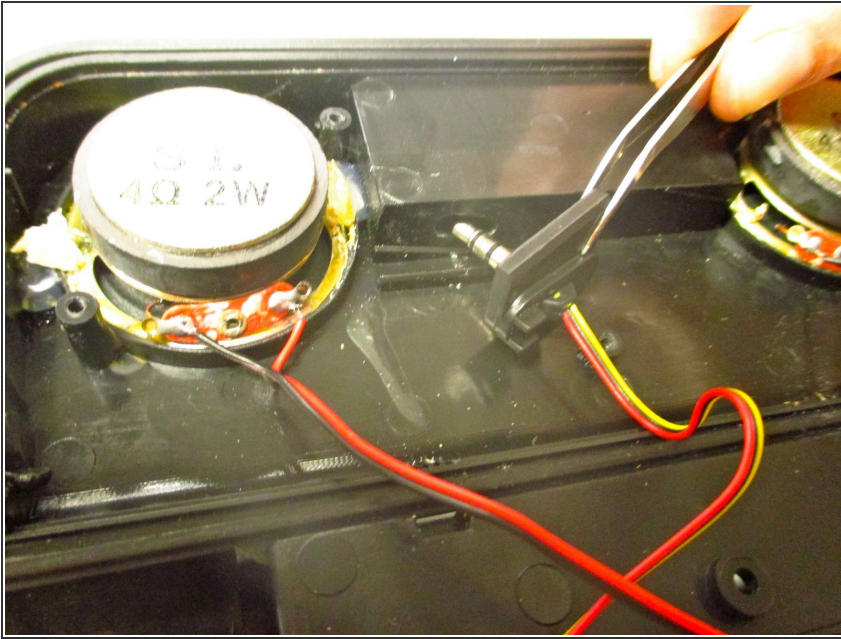
## Step 5 — Taking out the iPod/iPhone input



- Locate the iPhone/iPod input that is in the center of the console.
- Push the black plastic input stand to the left, and up, with your index finger.
- Use tweezers to wedge the input stand out of its slot.

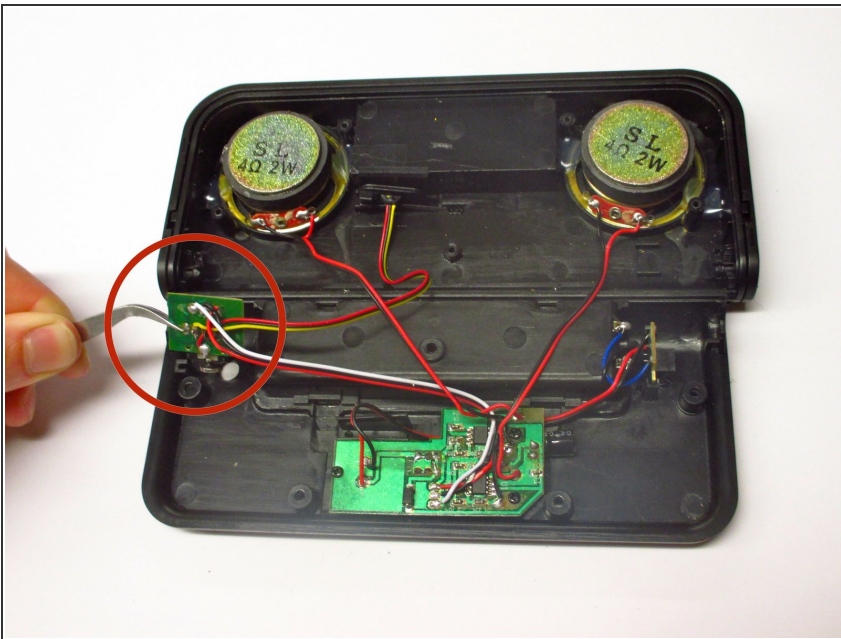


## Step 6 — Removing iPod/iPhone Input



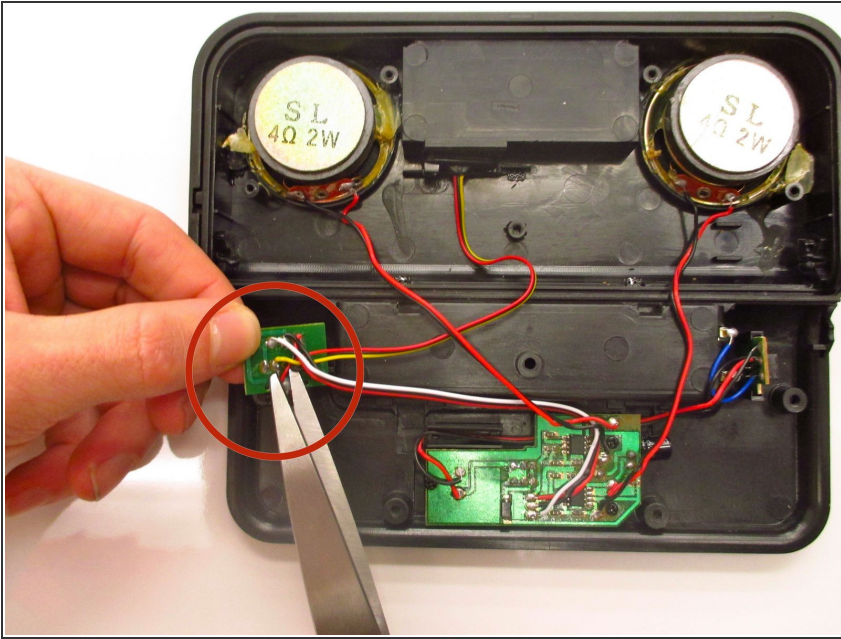
- Pull out the iPod/iPhone input with tweezers.

## Step 7 — Removing the Line In Chip



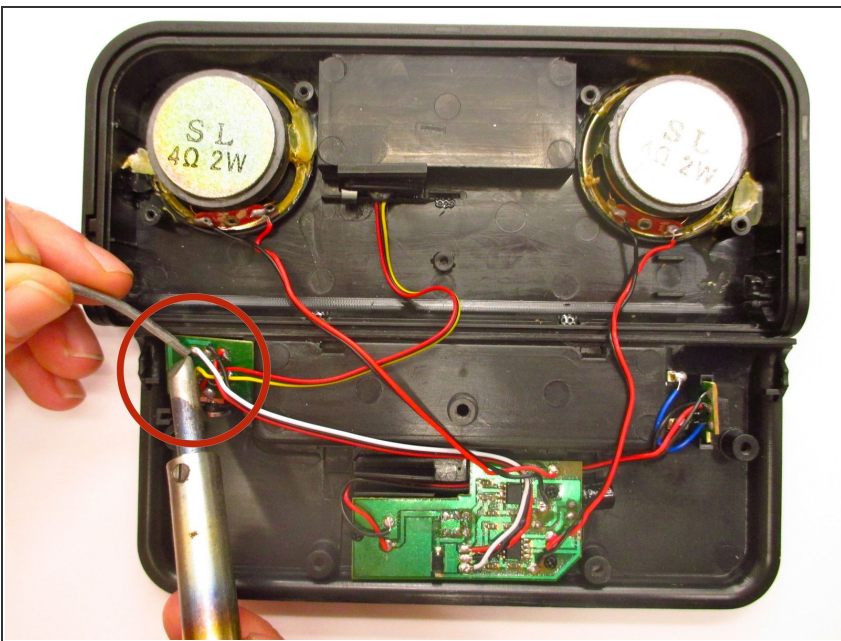
- Gently remove the Line In chip with tweezers.
- Note: The Line In chip is located on the left side of the device.

## Step 8 — Cutting the Input Wires from the Line In Chip



- Use scissors to cut the black, yellow, and red wires that connect the Line In chip to the iPod/iPhone input.
- Remove the old iPod/iPhone input and its associated wires.

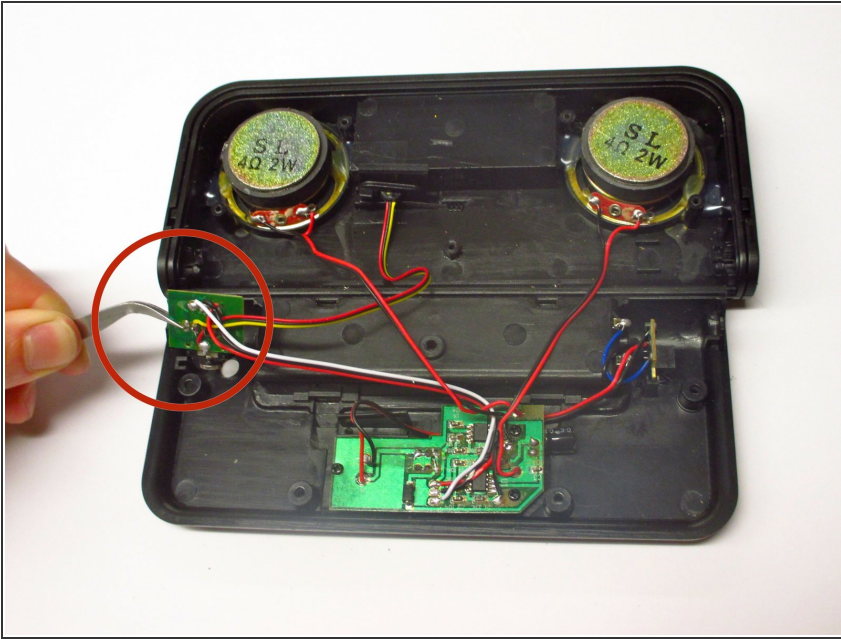
## Step 9 — Caulterizing the New Input Wires to the Line In Chip



- ⚠ Follow the instructions provided with the soldering station to preheat the gun before use.
- Place new iPod/iPhone input wires, one by one, in their previous position on the Line In chip. Wrap a strip of soldering wire on the point of contact between the chip and input wire.
- ⚠ Use the soldering gun to melt the strip of soldering wire.

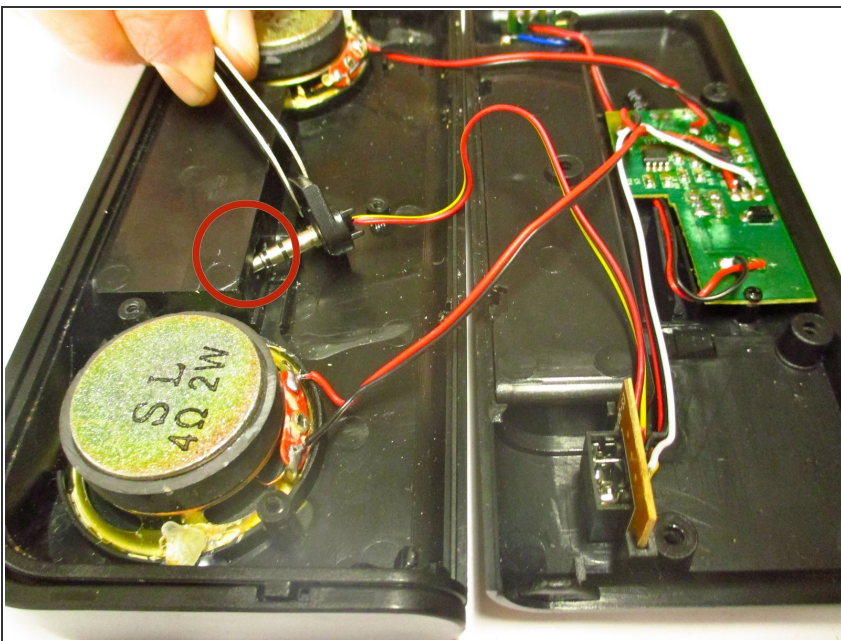


## Step 10 — Replacing the Line In Chip



- Use tweezers to carefully place the newly soldered Line In chip back into its original position.

## Step 11 — Positioning New iPod/iPhone Input Into Original Position



- With tweezers, insert the end of the iPod/iPhone input through its designated hole.
- ⓘ Note: The device has been rotated 90 degrees to the left in this picture.
- With both thumbs, push in the black plastic input stand until it snaps into place.

To reassemble your device, follow these instructions in reverse order.