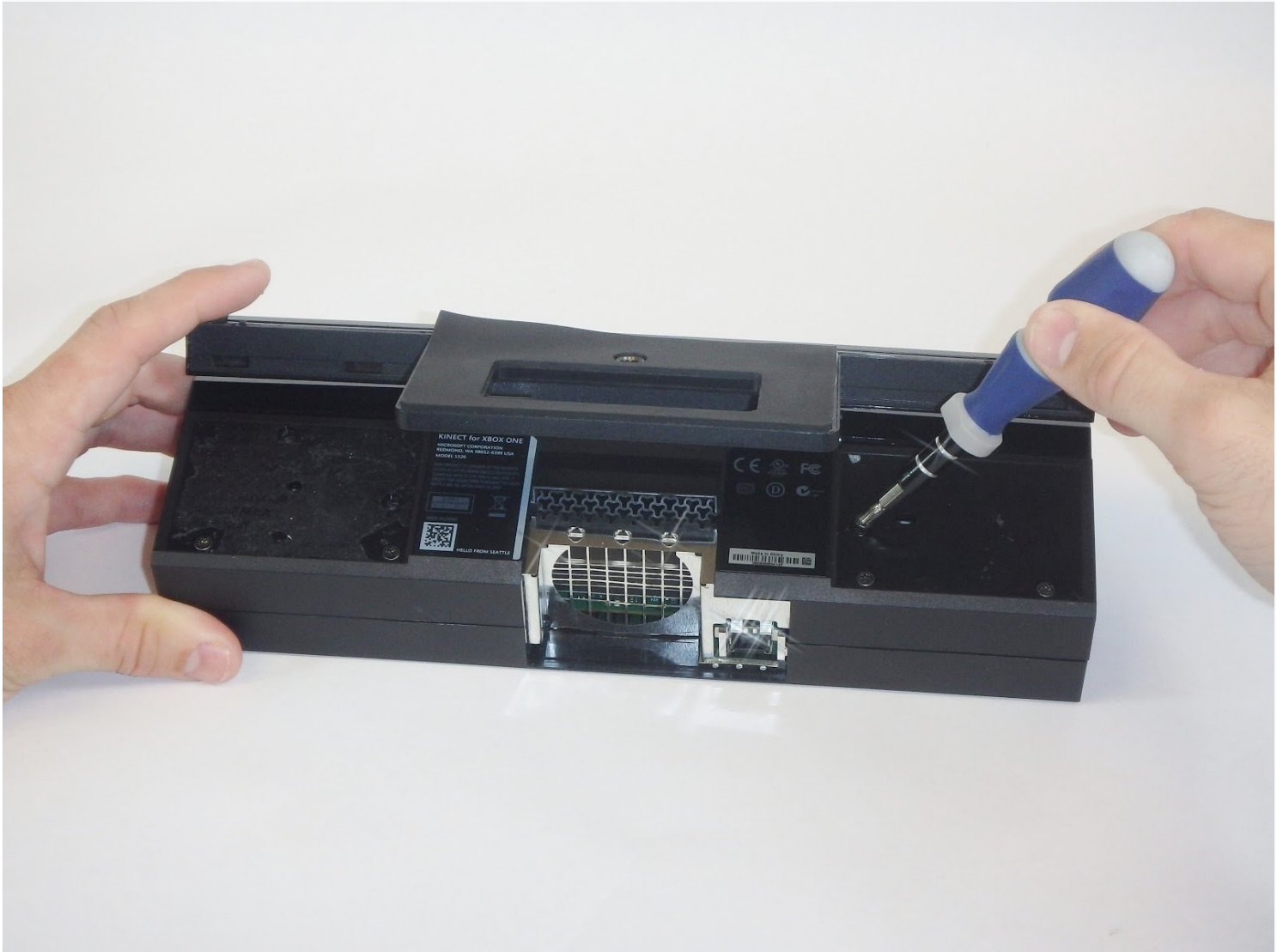




Xbox One Kinect Microphone Replacement

The microphone is inside of the stand of the...

Written By: Charles Schoonover



INTRODUCTION

The microphone is inside of the stand of the Kinect, and the stand is not able to be taken apart. You will need to find another Kinect with a working microphone to salvage a stand to replace the broken one.

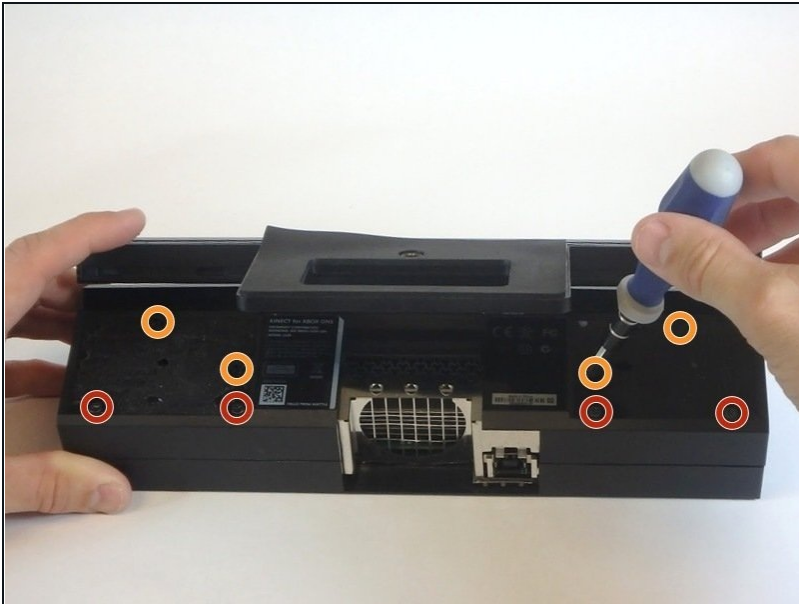
TOOLS:

[Tweezers](#) (1)
[TR9 Torx Security Screwdriver](#) (1)
[Spudger](#) (1)

PARTS:

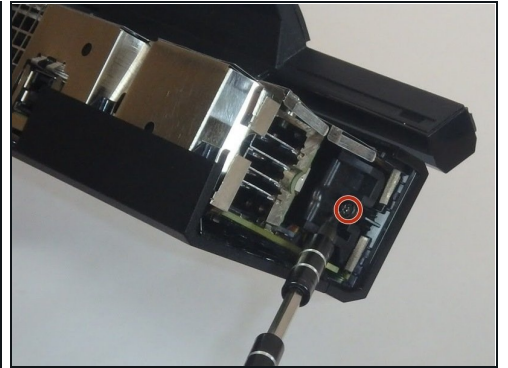
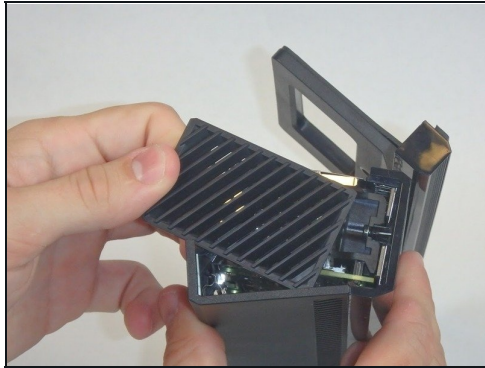
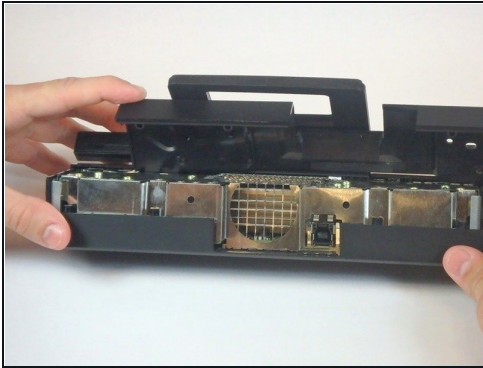
[Working Xbox One Kinect stand](#) (1)

Step 1 — Outer Shell



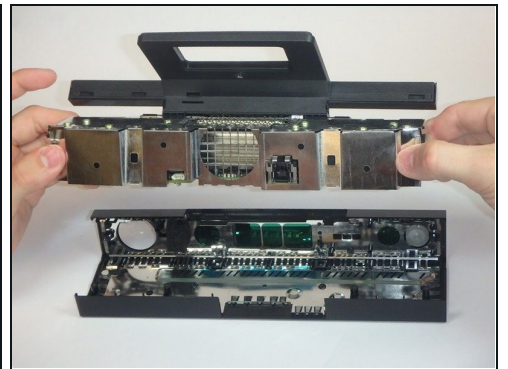
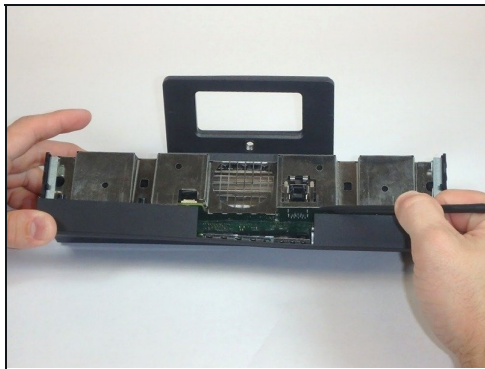
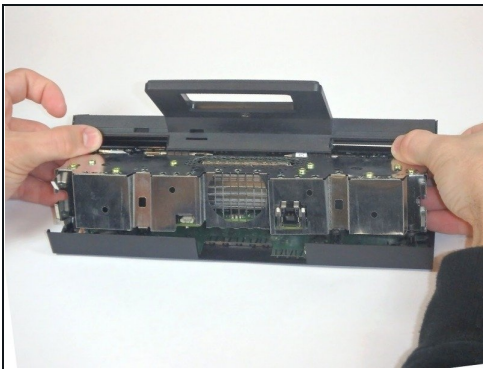
- Remove the sticker on the underside of the device.
- Remove the four 3.1x23.5 mm T10 screws underneath the sticker.
- While you're at it, remove the four 3.1x7.5 mm T10 screws beneath the sticker. Make note of the sizes and locations of the screws.

Step 2



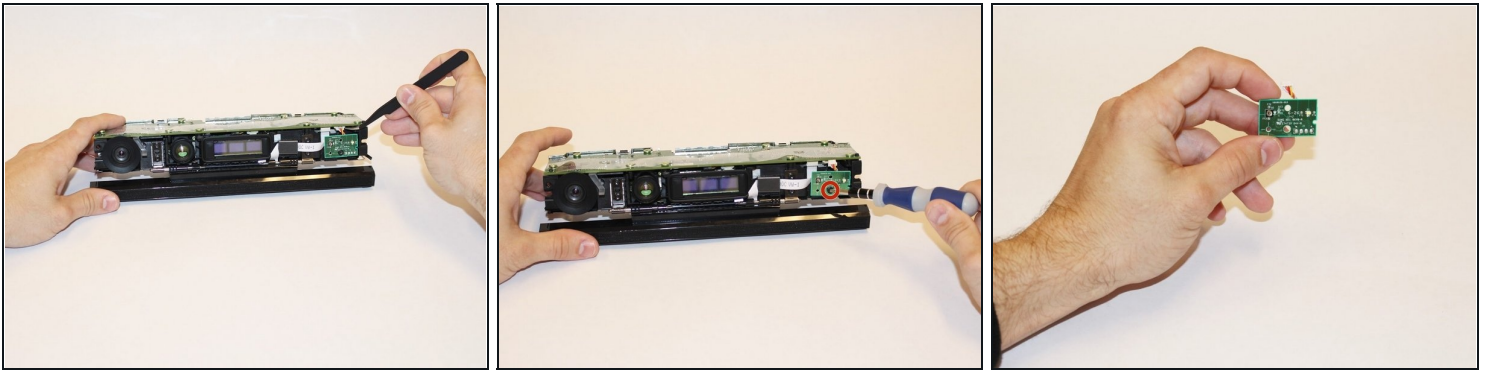
- Remove the back panel.
- Remove the black panels on either side of the Kinect, and remove the 3.1x7.5mm T10 screws underneath them.

Step 3



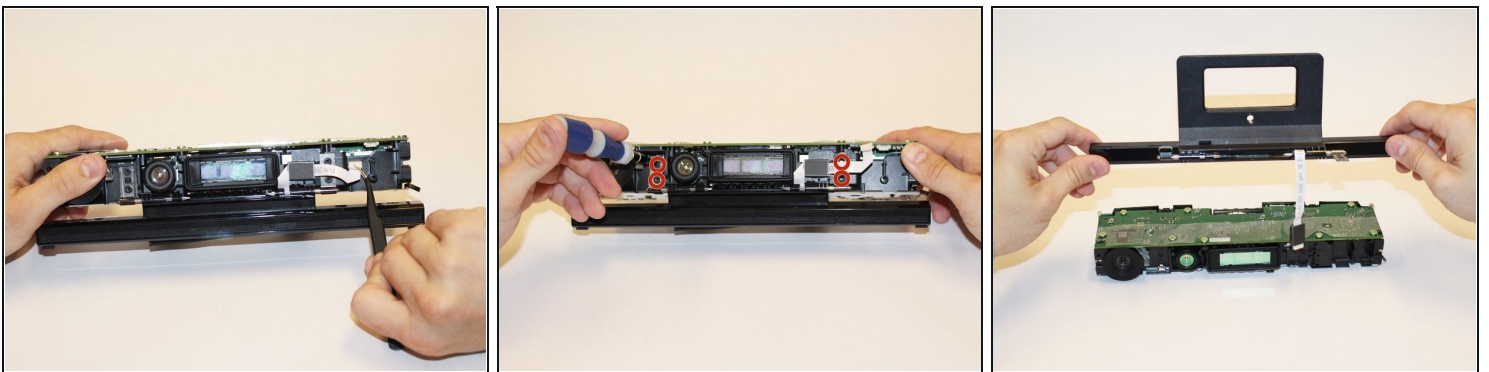
- Using your thumbs, press firmly against the outer case on either side of the stand. This will disengage the internal assembly.
- Lift the internal assembly with the spudger.
- Remove the assembly from the case. You now have access to the inner shell of the Kinect, along with the heat sink, microphone, and LED sensor.

Step 4 — Microphone



- Disconnect the cable connecting the infrared sensor to the motherboard.
- Remove the one 3.1x7.7 mm T9 screw from the infrared sensor.
- Remove the infrared sensor board for the Kinect.

Step 5



- Remove the white ribbon cable from the motherboard using [tweezers](#).
- Remove the four 3.1x7.7 mm T9 screws holding the stand containing the microphone in place.
- Unstick the black bracket holding the ribbon cable with a spudger, and remove the stand from the body of the Kinect.
- Replace with a working stand from a different Xbox One Kinect.

To reassemble your device, follow these instructions in reverse order.

