



Dremel MultiPro 395 Casing Replacement

Sometimes, the casing will get damaged when you use the MultiPro often.

Written By: Matthew Satton



INTRODUCTION

This guide will show how to replace damaged casing on the Dremel MultiPro 395.



TOOLS:

- [T15 Torx Screwdriver](#) (1)
-

Step 1 — Casing



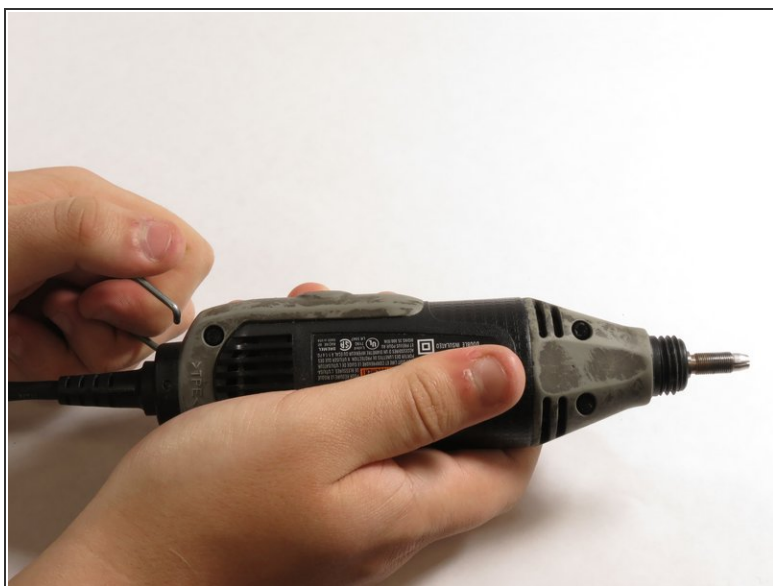
- Remove the blue caps located on either side of the MultiPro, using a 3 mm flathead screwdriver.

Step 2



- Carefully remove the carbon brushes attached at the end of the springs by gently pulling on the springs using your hands.

Step 3



- Pull one side of the hanger up and then pull away from the Multipro until the other side can be pulled out.

Step 4



- Remove the 4 screws located on the bottom of the Multipro with a T15 screwdriver.

Step 5



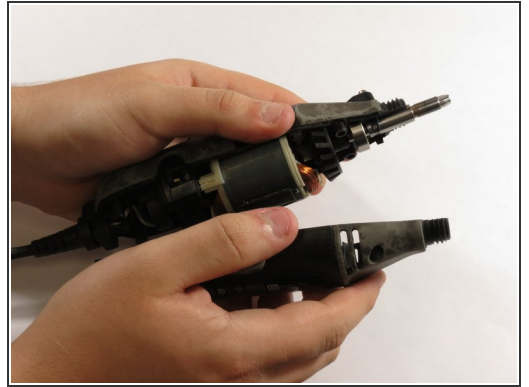
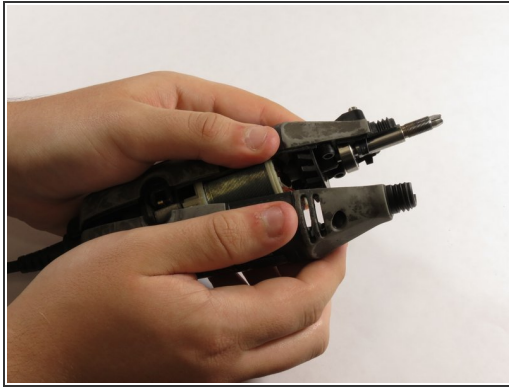
- Hold down the collet lock, remove the chuck cap from the top of the Multipro by screwing counterclockwise.

Step 6



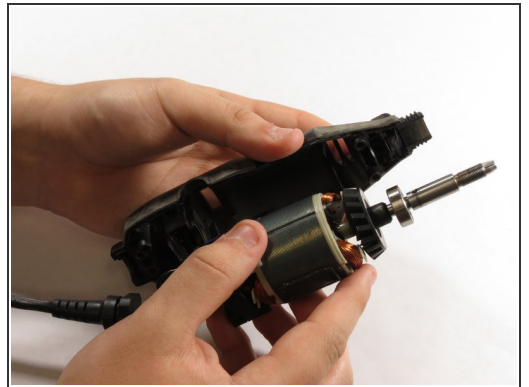
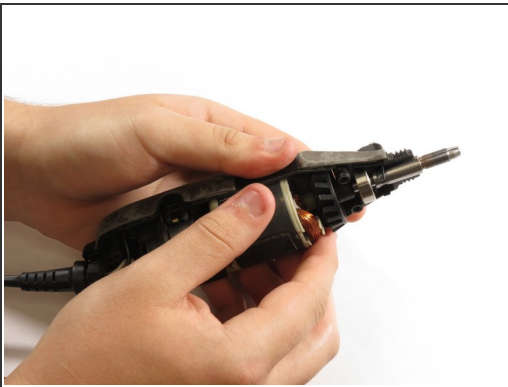
- Remove the black housing cap from the Multipro located directly below the chuck cap.

Step 7



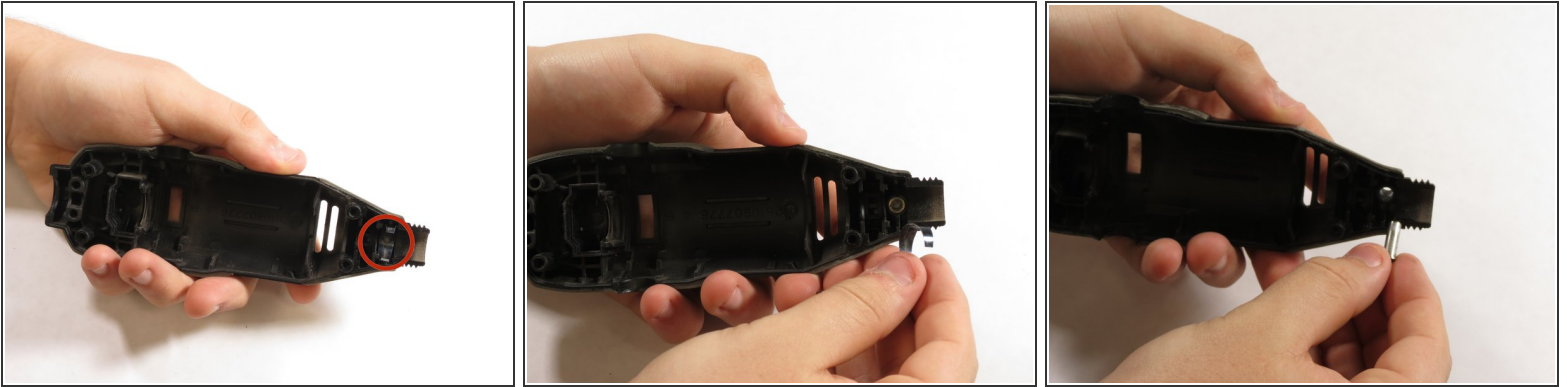
- Pull the bottom side of the casing up to remove it.

Step 8



- Gently lift the motor shaft out of the Multipro.

Step 9



- Pull the lock pin and its casing out of the other side of the Multipro case.

To reassemble your device, follow these instructions in reverse order.