



# Samsung Gear Live Battery Replacement

This guide will show you how to replace the Samsung Gear Live's battery.

Written By: Keith Cooper



---

## INTRODUCTION

The watch contains a small, 300mAh lithium-ion battery. Though these batteries will generally last for years, they do have a limit to the number of times they can be charged. As the battery grows older and is charged repeatedly, it may become less and less able to hold a charge. When this happens, replace the battery.



### TOOLS:

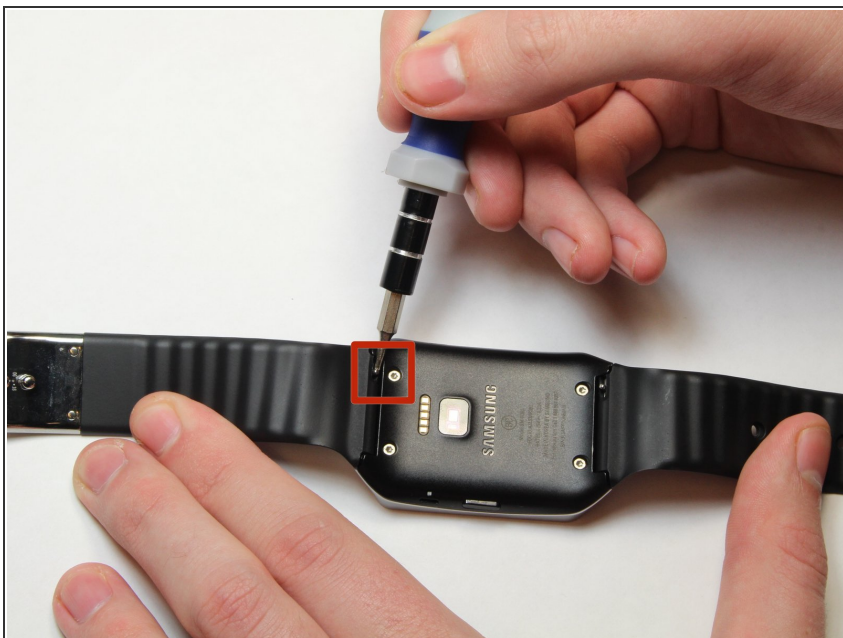
- [Flathead 3/32" or 2.5 mm Screwdriver](#) (1)
  - [iFixit Opening Tools](#) (1)
  - [T5 Torx Screwdriver](#) (1)
-

## Step 1 — Lay the watch face-down



- Lay the watch face-down on a flat, stable surface.

## Step 2 — Remove the holding pin



- Press the watchband down against the work surface.
- Press the tip of a flathead screwdriver against the edge of the spring-loaded holding pin.

### Step 3 — Remove the watchband



- With the spring-loaded pin pressed in, the watch band should release easily.
- Gently pull the band away from the body of the watch.
- Repeat steps 2 and 3 for the opposite side.

### Step 4 — Locate the four screws



- With the watch laying face-down, locate the four screws. They are located on the back of the watch, at the four corners.

## Step 5 — Remove the 4 screws



- Using a Torx-T5 screwdriver, remove each of the four 4mm screws and set them aside.

## Step 6 — Pry off the back of the watch.



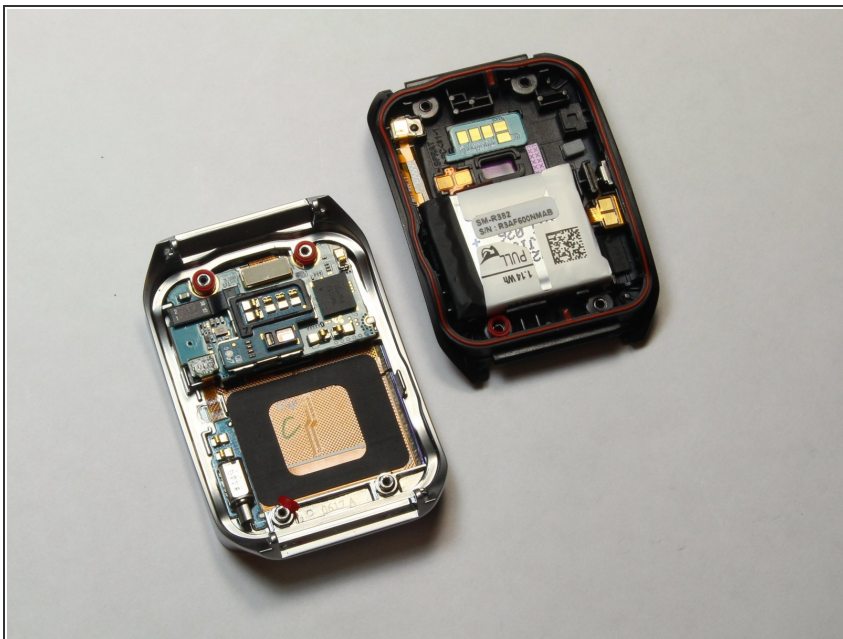
- Gently work the plastic opening tool under the top edge of the watch's back cover.

## Step 7 — Lift off the back cover



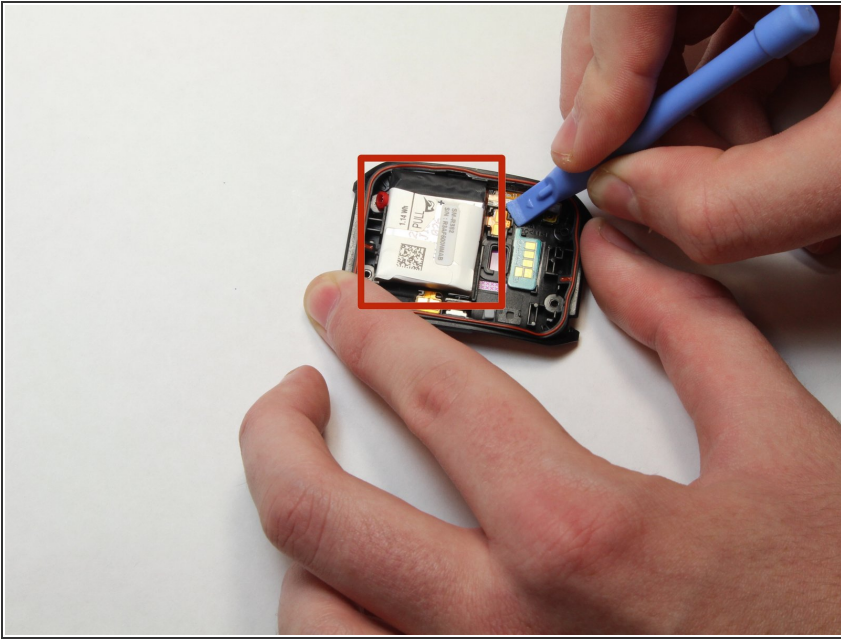
- With the watch's back cover pried loose, gently lift it away from the front half of the watch.

## Step 8 — Set both halves of the watch aside



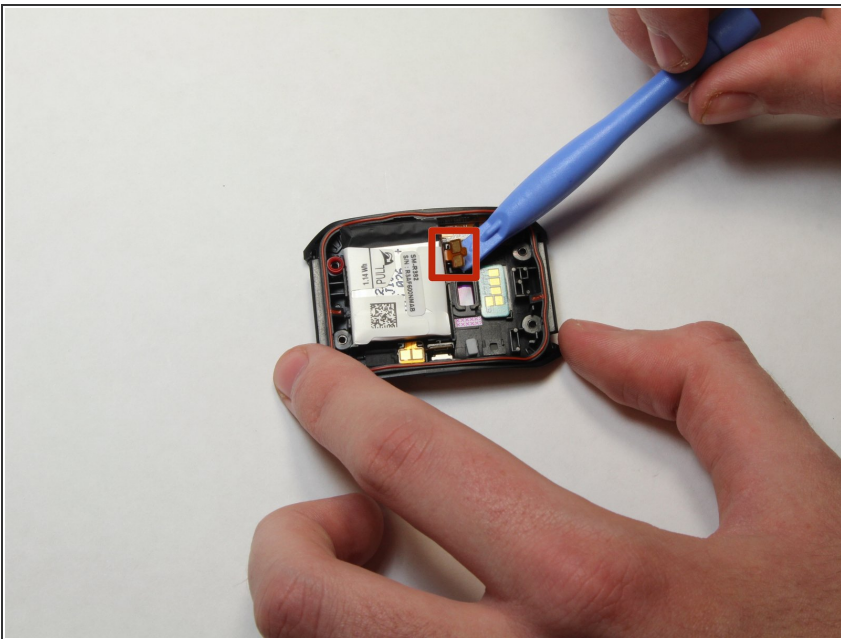
- Lay both halves of the watch body assembly face down (with internal components facing up).

## Step 9 — Locate the battery



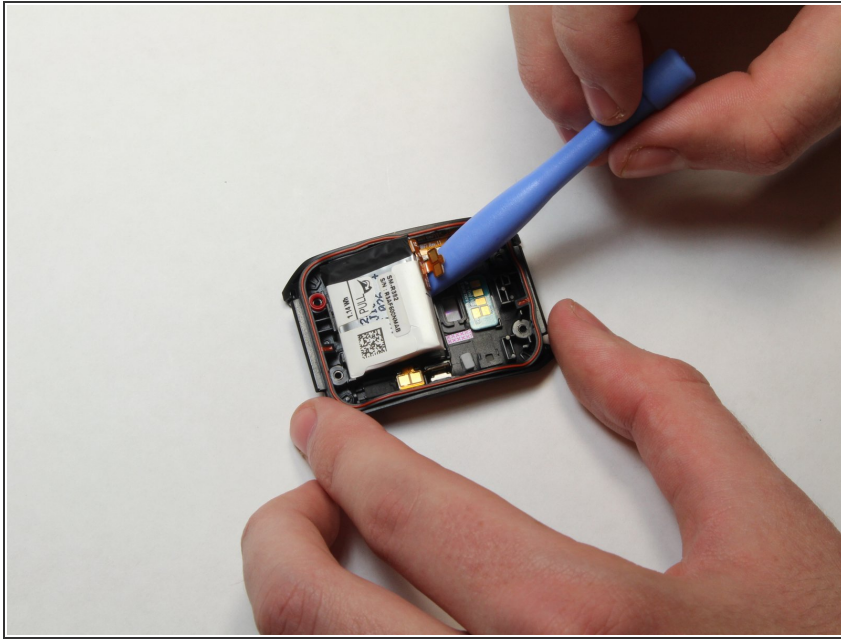
- Locate the battery on the back half of the disassembled watch body. It is rectangular in shape and located just above the window for the heart monitor.

## Step 10 — Locate the battery contacts



- Locate the battery's electrical contacts. They are located next to the heart rate monitor. They roughly form a "+" shape.
- Using the plastic opening tool, gently pry the contacts away from the plastic channel in which they fit.

## Step 11 — Pry out the battery



- Gently work the plastic opening tool under the battery.
  - Using the plastic opening tool, gently pry the battery up.
- ⚠ If replacing the battery, please dispose of it properly. Do not throw the battery in the trash. Contact your local municipality for locations which accept lithium-ion batteries for disposal or recycling.

To reassemble your device, follow these instructions in reverse order.